

CY3271-EXP1 ENVIRONMENTAL SENSING KIT QUICK START GUIDE

The Environmental Sensing Kit requires the CY3271 Kit for operation. This quick start guide assumes you are familiar with the CY3271, its operation, and programming of PSoC devices. If not, refer to the users guide on the CD.

1



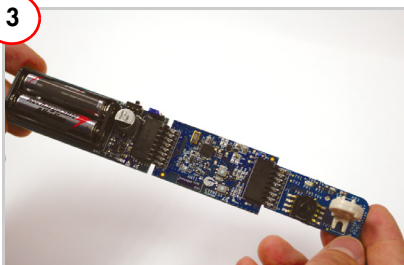
Install all software in the CY3271 kit.

2



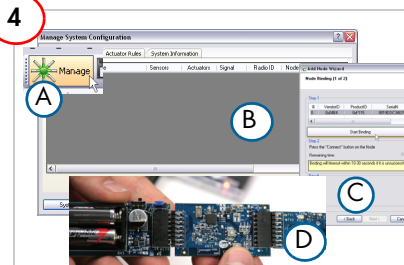
Program the RF Expansion board with *RF_I2C_Bridge.hex* from the CD.

3



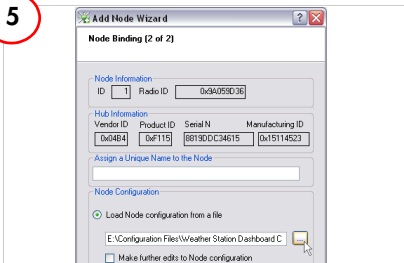
Connect the battery board, RF Expansion board, and the Weather Station board.

4



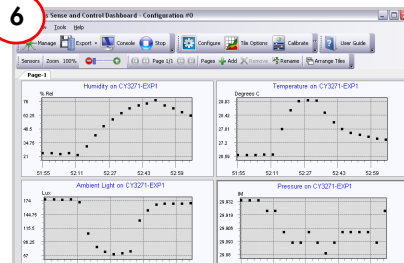
Launch Sense and Control Dashboard and 'bind' the RF Expansion board.

5



Click 'Load Node configuration from a file' and select *Weather_Station_Dashboard_Configuration.xml* from the CD.

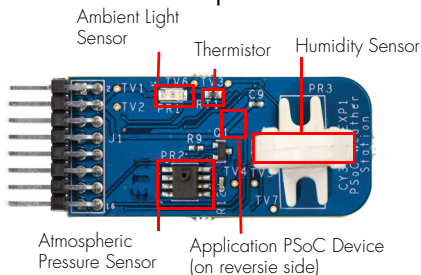
6



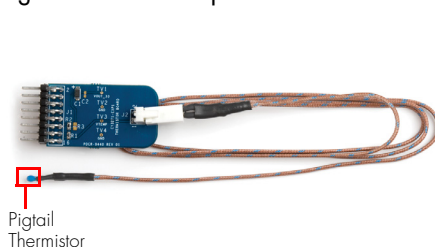
Monitor, chart, and record data from all sensors. See the user guide for other CY3271 projects.

CY3271-EXP1 ENVIRONMENTAL SENSING KIT QUICK START GUIDE

Weather Station Expansion Board

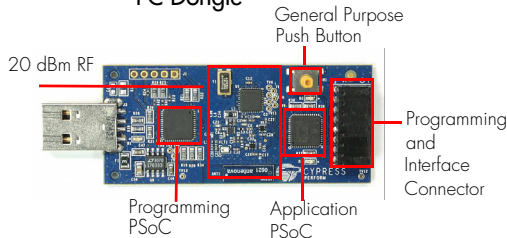


Pigtail Thermistor Expansion Board

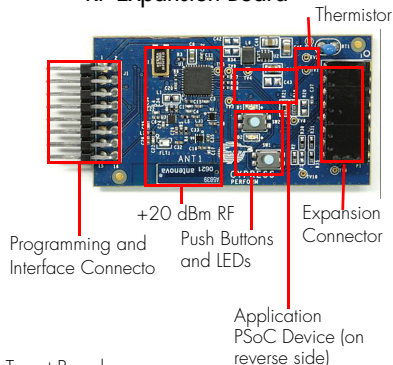


CY3271 Hardware (Required for Operation)

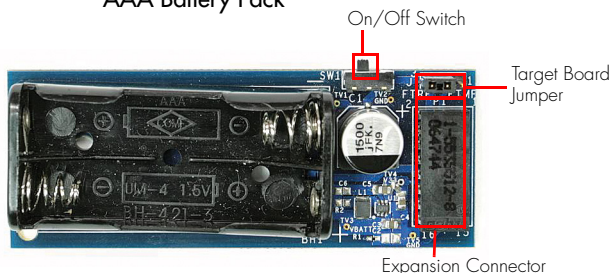
PC Dongle



RF Expansion Board



AAA Battery Pack



For the latest information about this kit, visit
www.cypress.com/go/CY3271-EXP1



AMEYA360

Components Supply Platform

Authorized Distribution Brand :



Website :

Welcome to visit www.ameya360.com

Contact Us :

➤ Address :

401 Building No.5, JiuGe Business Center, Lane 2301, Yishan Rd
Minhang District, Shanghai , China

➤ Sales :

Direct +86 (21) 6401-6692

Email amall@ameya360.com

QQ 800077892

Skype ameyasales1 ameyasales2

➤ Customer Service :

Email service@ameya360.com

➤ Partnership :

Tel +86 (21) 64016692-8333

Email mkt@ameya360.com