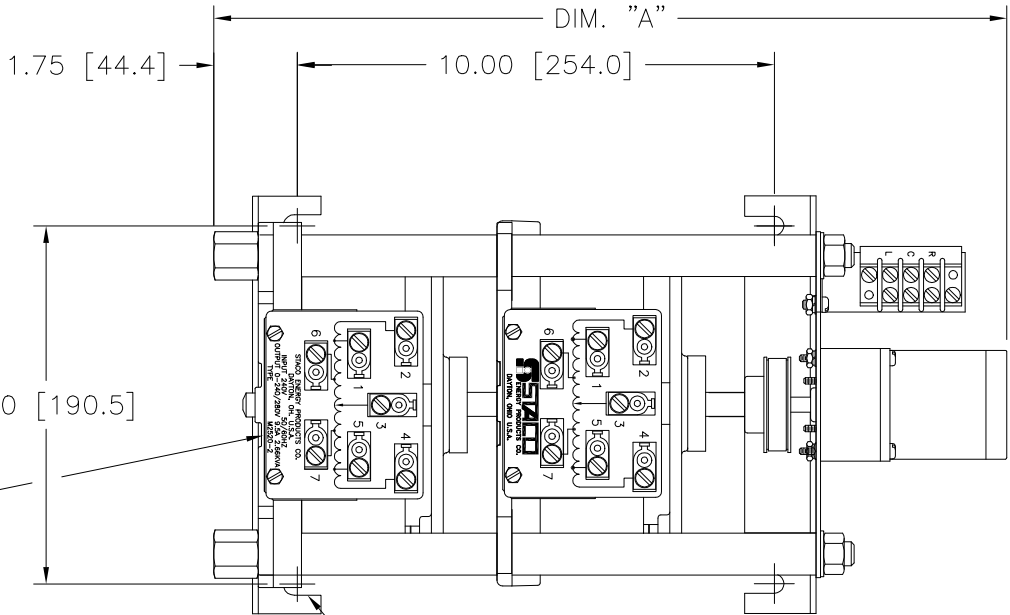
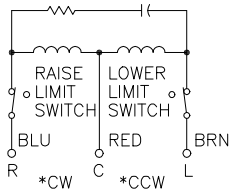


STANDOFFS TAPPED  
1/2-13 X .50 [12.7]  
DEEP FOR MTG. BOLTS  
(4) PLACES

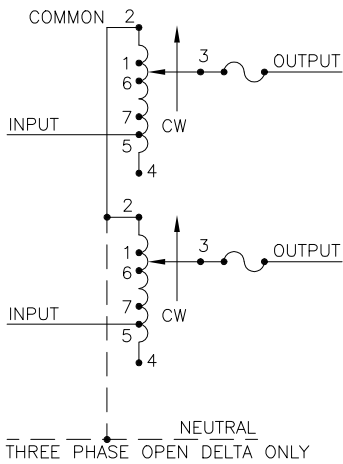


.41 [10.3] WIDE  
MOUNTING SLOTS  
(4) PLACES

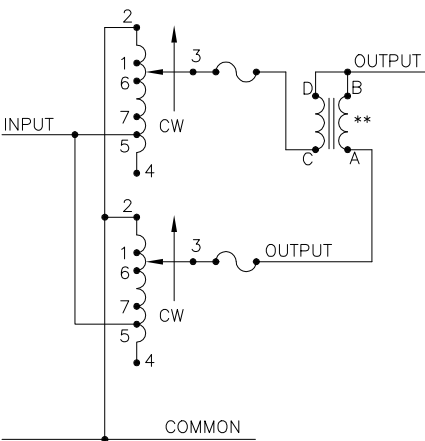


MOTOR CIRCUIT  
120V, 50/60 HZ  
\* ROTATION AS VIEWED  
FROM MOTOR END  
MOTOR SPEED: SEE CHART

SPEED (SECONDS)	MODEL NUMBER	DIM. "A"
5	5M2520-2	16.11 [409.1]
15	15M2520-2	16.11 [409.1]
30	30M2520-2	16.62 [422.1]
60	60M2520-2	16.62 [422.1]



THREE PHASE OPEN DELTA ONLY  
SCHEMATIC  
THREE PHASE OPEN DELTA AND SINGLE  
PHASE SERIES. FUSE RECOMMENDED BUT  
NOT SUPPLIED



SINGLE PHASE PARALLEL  
SCHEMATIC  
SINGLE PHASE PARALLEL  
FUSE RECOMMENDED BUT NOT SUPPLIED

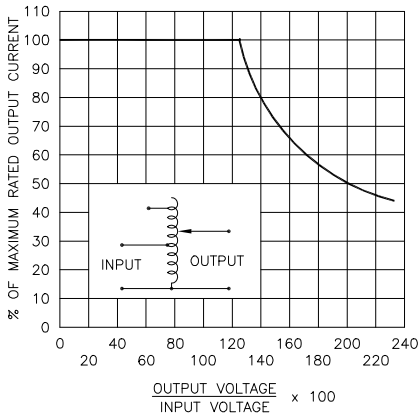


FIGURE A  
MAXIMUM OUTPUT CURRENT OF ANY  
DUAL INPUT VOLTAGE OR VOLTAGE DOUBLER  
UNIT OPERATED AT LOWER INPUT VOLTAGE.

# MAXIMUM OUTPUT CURRENT IN OUTPUT VOLTAGE RANGE FROM 0 TO 25% ABOVE  
LINE VOLTAGE. AT HIGHER OUTPUT VOLTAGES, THE OUTPUT CURRENT MUST BE  
REDUCED ACCORDING TO THE DERATING CURVE FIGURE A.

§ MAXIMUM KVA AT MAXIMUM OUTPUT VOLTAGE AND CORRESPONDING DERATED  
OUTPUT CURRENT. MAXIMUM KVA FOR LOWER VOLTAGES MAY BE CALCULATED  
FROM DERATING CURVE FIGURE A.

++ LINE TO LINE VOLTAGE.

\*\* REQUIRES ONE 52LAC PARALLELING CHOKE (NOT SUPPLIED).

∏ IF GANGED UNITS ARE USED IN A SYSTEM THAT ORDINARILY HAS A COMMON  
NEUTRAL OR GROUND BETWEEN SOURCE AND LOAD, THE NEUTRAL OR GROUND  
MUST BE CONNECTED TO THE COMMON TERMINALS OF THE VARIABLE TRANSFORMER  
ASSEMBLY. IF THE SYSTEM HAS NO NEUTRAL, THE LOAD MUST BE BALANCED OR  
THE TRANSFORMER WILL BE DAMAGED.

■ JUMPER PROVIDED IN STANDARD COMMON POSITION AND SHOULD BE MOVED OR  
REMOVED AS REQUIRED.

+ MOTOR DRIVEN UNITS USE TERMINAL CONNECTIONS FOR CCW INCREASING  
VOLTAGE, AS VIEWED FROM THE BASE END.

SPECIFICATIONS															
WIRING	INPUT		OUTPUT					SHAFT ROTATION TO INCREASE VOLTAGE	TERMINAL CONNECTIONS +						
	VOLTS	HERTZ	VOLTS	CONSTANT CURRENT LOAD		CONSTANT IMPEDANCE LOAD			MOTOR DRIVEN UNITS USE CCW FOR INCREASING VOLTAGE AS VIEWED FROM BASE END ■						
				MAX. AMPS	MAX. KVA	MAX. AMPS	MAX. KVA		INPUT	JUMPER	OUTPUT				
SINGLE PHASE PARALLEL **	240	50/60	0-240	20	4.80	26	6.20	CW	2-2,4-4	——	4-B				
							CCW	2-2,4-4	——	2-B					
	120	50/60	0-280	20	5.60	——	——	CW	1-1,4-4	——	4-B				
							CCW	5-5,2-2	——	2-B					
SINGLE PHASE SERIES	480	50/60	0-280	20#	2.40 §	——	——	CW	7-7,4-4	——	4-B				
							CCW	6-6,2-2	——	2-B					
	240	50/60	0-480	10	4.80	13	6.24	CW	2-2	4-4	3-3				
							CCW	4-4	2-2	3-3					
			0-560	10	5.60	——	——	CW	1-1	4-4	3-3				
							CCW	5-5	2-2	3-3					
THREE PHASE OPEN DELTA Π	240 ++	50/60	0-560	10#	2.40 §	——	——	CW	7-7	4-4	3-3				
							CCW	6-6	2-2	3-3					
	120 ++	50/60	0-240	10	4.20	13	5.40	CW	2-4-2	4-4	3-4-3				
							CCW	4-2-4	2-2	3-2-3					
			0-280	10	4.85	——	——	CW	1-4-1	4-4	3-4-3				
							CCW	5-2-5	2-2	3-2-3					
			0-280	10#	2.10 §	——	——	CW	7-4-7	4-4	3-4-3				
							CCW	6-2-6	2-2	3-2-3					
UNLESS OTHERWISE SPECIFIED, TOLERANCE IS ± DECIMALS .XX .0005 .06 HOLES .01 ANGLES 1° DRAFT 1-1/2° XXX .005				UNITS IN [mm]		TITLE: SPEC. CONTROL DRAWING MOTORIZED VARIABLE XFMR. TYPE: M2520-2									
MATERIAL :		ALL DIMENSIONS APPLY AFTER PLATING													
The information and design disclosed herein was originated by and is the property of STACO ENERGY PRODUCTS CO., which reserves all patent, proprietary, design, manufacturing, reproduction, use and sale rights thereto, and to any article disclosed therein except to the extent rights are expressly granted to others. The foregoing does not apply to vendor proprietary parts.				DRAWN BY TIM RAU		DATE 2/20/98		FIRST USED ON		DO NOT SCALE DWG.		CUSTOMER APPROVAL		DATE	
				CHECKER		DATE		WEIGHT APPROX. 60 LBS.		CODE IDENT. NO. 83008		DWG. NO. D 031-5638			
				ENGINEER		DATE		SCALE .5=1		SHEET 1 OF 1					

Authorized Distribution Brand :



Website :

Welcome to visit [www.ameya360.com](http://www.ameya360.com)

Contact Us :

➤ Address :

401 Building No.5, JiuGe Business Center, Lane 2301, Yishan Rd  
Minhang District, Shanghai , China

➤ Sales :

Direct +86 (21) 6401-6692

Email [amall@ameya360.com](mailto:amall@ameya360.com)

QQ 800077892

Skype ameyasales1 ameyasales2

➤ Customer Service :

Email [service@ameya360.com](mailto:service@ameya360.com)

➤ Partnership :

Tel +86 (21) 64016692-8333

Email [mkt@ameya360.com](mailto:mkt@ameya360.com)