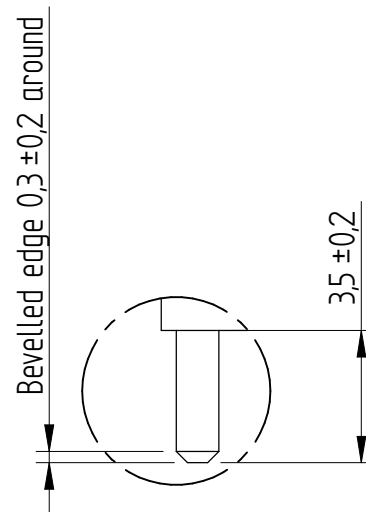
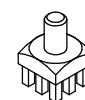
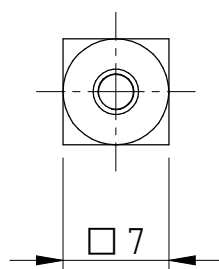


A





DETAIL A (5:1)

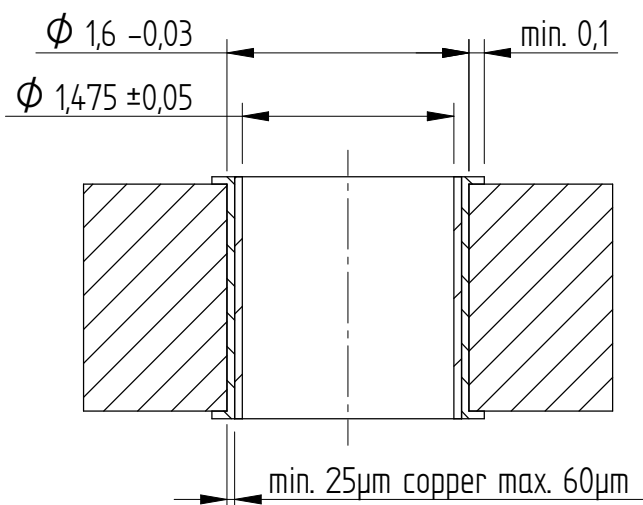


(1:1)

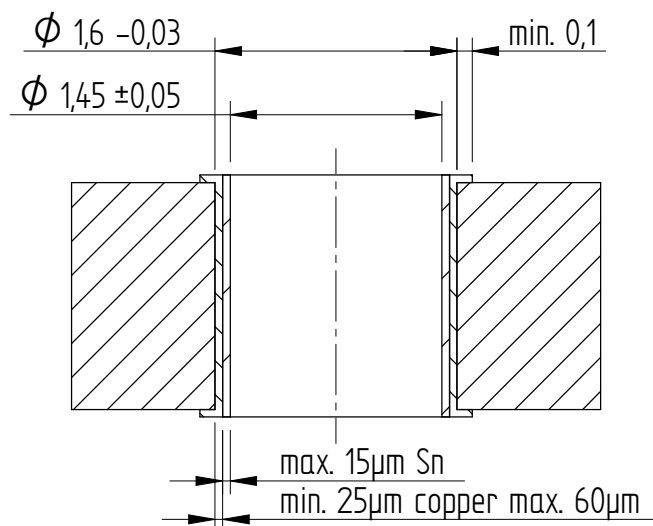
Execution: Press-Fit
Surface coating 5-10µm Sn on 2-4µm Cu

<div>(PROJECTION)</div> <div></div>				<div>(TOLERANCES)</div> <div>DIN ISO 2768-m</div>		<div>(SURFACE)</div>		<div>SCALE</div> <div>2:1</div>		<div>TOTAL WEIGHT: 1,6 g</div>	
								<div>(MATERIAL)</div> <div>CuZn39Pb3</div>		<div>WEIGHT Cu: 0,0091 g</div>	
						<div>WEIGHT Sn: 0,0186 g</div>					
					DATE	NAME	<div>(TITLE)</div> <div>Threaded shank M3 full plain Pin-Plate</div>				
				DRAWN	2009/07/14	Dino Cantara					
				VERIFIED	2009/07/14	Heiko Schmid					
							<div>(DRAWING NUMBER)</div> <div>7461094</div>				
				<div></div>			<div>Sheet</div> <div>1</div>				
				<div>1</div>							
ISSUE	CHANGE	DATE	NAME	<div>CONFIDENTIAL !! ALL RIGHTS RESERVED. Passing on or duplication without prior written agreement prohibited.</div>							


Drill hole specification for chemical surfaces



Drill hole specification for HAL



This electronic component is designed and developed with the intention for use in general electronics equipments. Before incorporating the components into any equipments in the field such as aerospace, aviation, nuclear control, submarine, transportation (automotive control, train control, ship control), transportation signal, disaster prevention, medical, public information network etc. where high safety and reliability are especially required or if there is possibility of direct damage or injury to human body, Würth Elektronik must be asked for a written approval. In addition, even electronic component in general electronic equipments, when used in electrical circuits that require high safety, reliability functions or performance, the sufficient reliability evaluation-check for the safety must be performed before by the user before usage.

(PROJECTION)				(TOLERANCES)		(SURFACE)	SCALE 20:1					
				DIN ISO 2768-m			(MATERIAL)					
					DATE	NAME	(TITLE) Power Elements Specification Press-fit system					
				DRAWN	2013/08/27	Dino Cantara						
				VERIFIED	2013/08/27	Wladimir Werz						
							(DRAWING NUMBER)				Sheet	1
											1	
ISSUE	CHANGE	DATE	NAME	CONFIDENTIAL !! ALL RIGHTS RESERVED. Passing on or duplication without prior written agreement prohibited.								

AMEYA360

Components Supply Platform

Authorized Distribution Brand :



Website :

Welcome to visit www.ameya360.com

Contact Us :

➤ Address :

401 Building No.5, JiuGe Business Center, Lane 2301, Yishan Rd
Minhang District, Shanghai , China

➤ Sales :

Direct +86 (21) 6401-6692

Email amall@ameya360.com

QQ 800077892

Skype ameyasales1 ameyasales2

➤ Customer Service :

Email service@ameya360.com

➤ Partnership :

Tel +86 (21) 64016692-8333

Email mkt@ameya360.com