

# Specification

## AN4240 module (Preliminary)

SSC		고객명
Drawn	Approval	Approval

# Contents

1. Part number
2. Outline dimensions
3. Characteristics

## Part number of AN4240 module

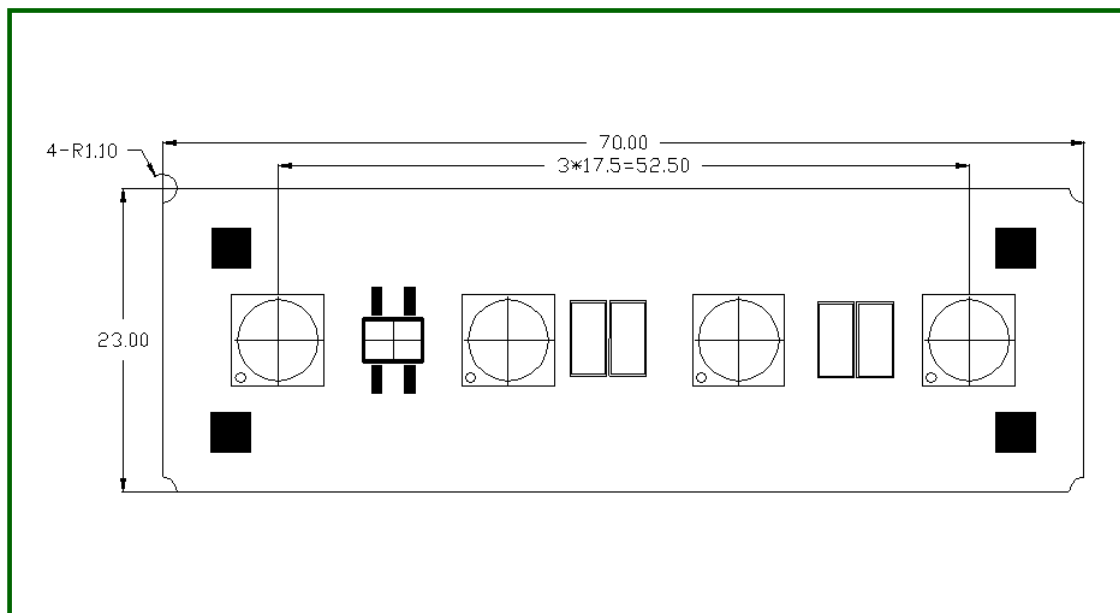
### 1. Part Number form : A X<sub>1</sub> X<sub>2</sub> X<sub>3</sub> X<sub>4</sub> X<sub>5</sub>

<b>X<sub>1</sub></b>	<b>Color</b>	<b>N</b>	Warm white
<b>X<sub>2</sub></b>	<b>Acriche series</b>	<b>4</b>	A4 series
<b>X<sub>3</sub></b>	<b>Lens type</b>	<b>2</b>	Dome type
<b>X<sub>4</sub></b>	<b>Voltage</b>	<b>0</b>	100V(AC)
		<b>1</b>	110V(AC)
		<b>2</b>	220V(AC)
		<b>3</b>	230V(AC)
<b>X<sub>5</sub></b>	<b>PCB type</b>	<b>1</b>	4W Compact
		<b>2</b>	4W Square
		<b>3</b>	4W Line
		<b>4</b>	8W Bulb

For more information about binning and labeling, refer to the Application Note -1

## Outline dimensions

### 1. AN4211

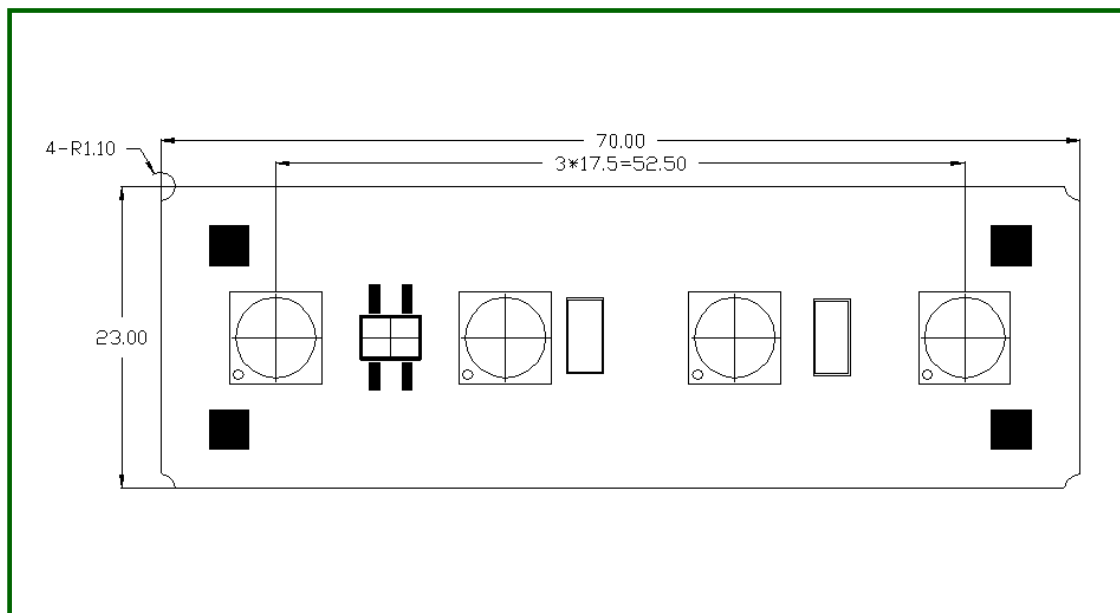


#### Notes :

- [1] All dimensions are in millimeters. (Tolerance :  $\pm 0.2$ )
- [2] Scale : none
- [3] The appearance and specifications of the product may be changed for improvement without notice

## Outline dimensions

### 2. AN4221

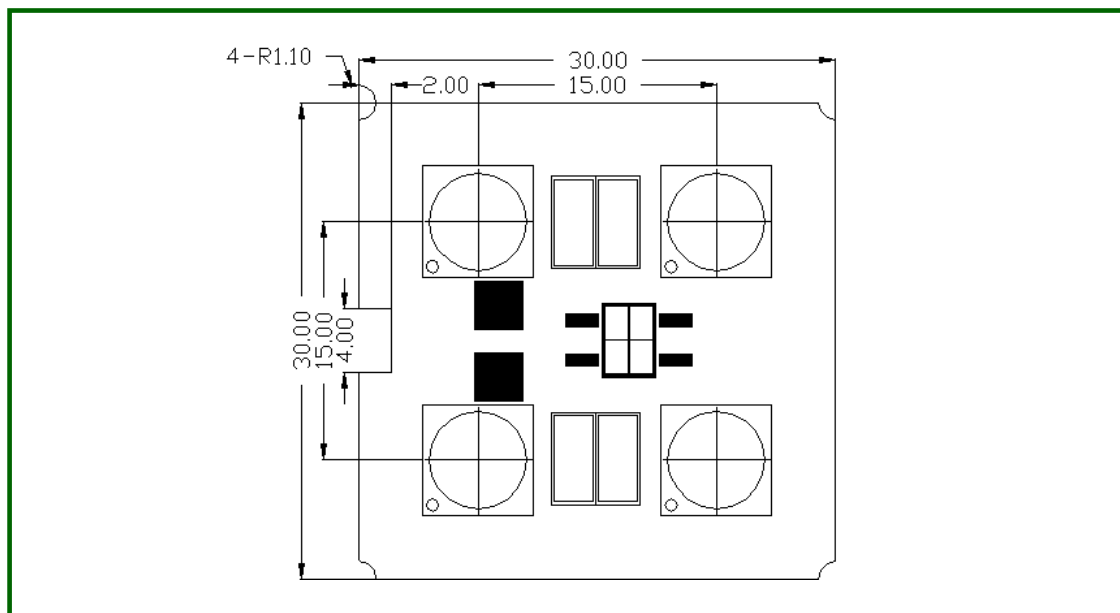


#### Notes :

- [1] All dimensions are in millimeters. (Tolerance :  $\pm 0.2$ )
- [2] Scale : none
- [3] The appearance and specifications of the product may be changed for improvement without notice

## Outline dimensions

### 3. AN4212

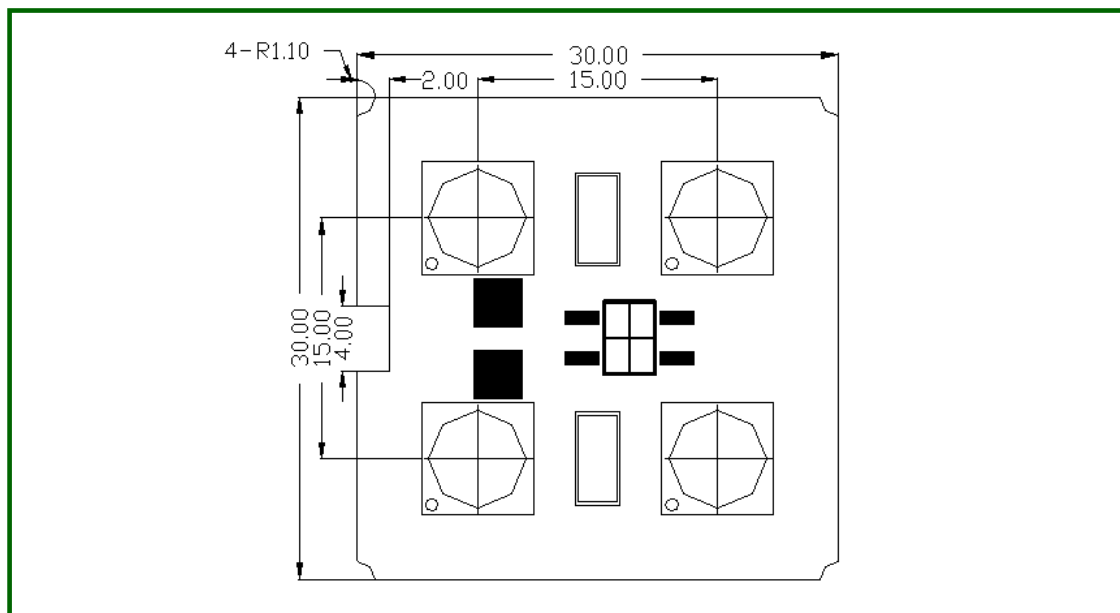


#### Notes :

- [1] All dimensions are in millimeters. (Tolerance :  $\pm 0.2$ )
- [2] Scale : none
- [3] The appearance and specifications of the product may be changed for improvement without notice

## Outline dimensions

### 4. AN4222

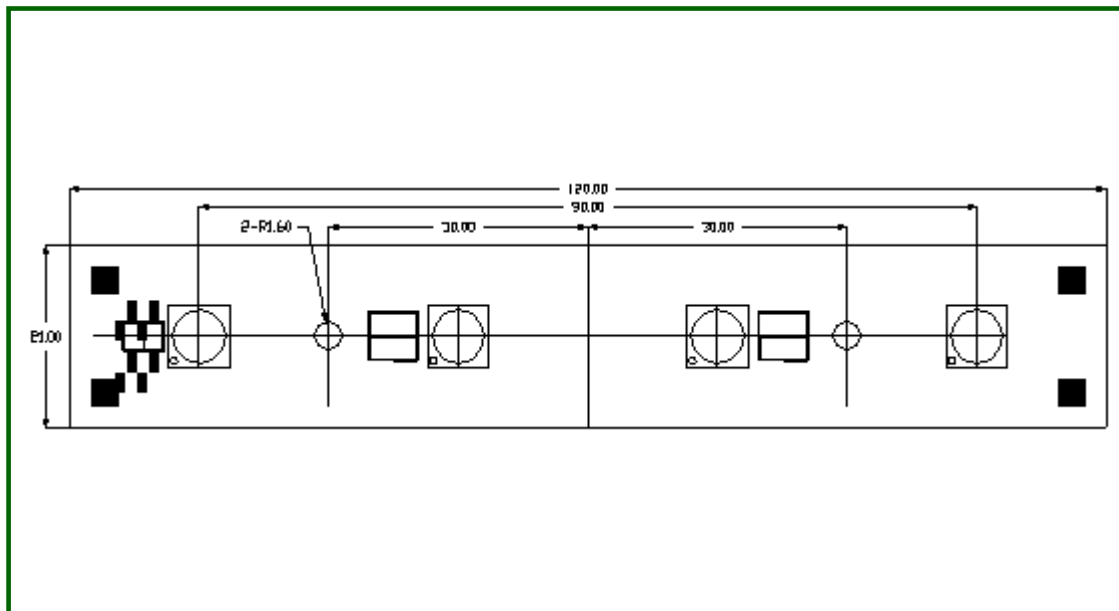


#### Notes :

- [1] All dimensions are in millimeters. (Tolerance :  $\pm 0.2$ )
- [2] Scale : none
- [3] The appearance and specifications of the product may be changed for improvement without notice

## Outline dimensions

### 5. AN4213



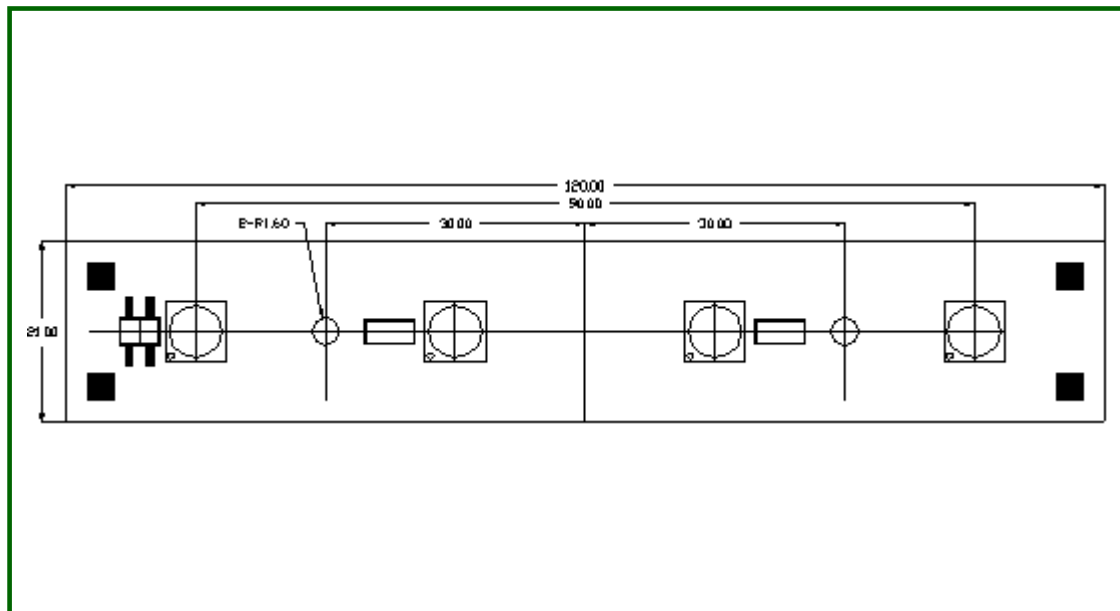
#### Notes :

- [1] All dimensions are in millimeters. (Tolerance :  $\pm 0.2$ )
- [2] Scale : none
- [3] The appearance and specifications of the product may be changed for improvement without notice



## Outline dimensions

### 6. AN4223

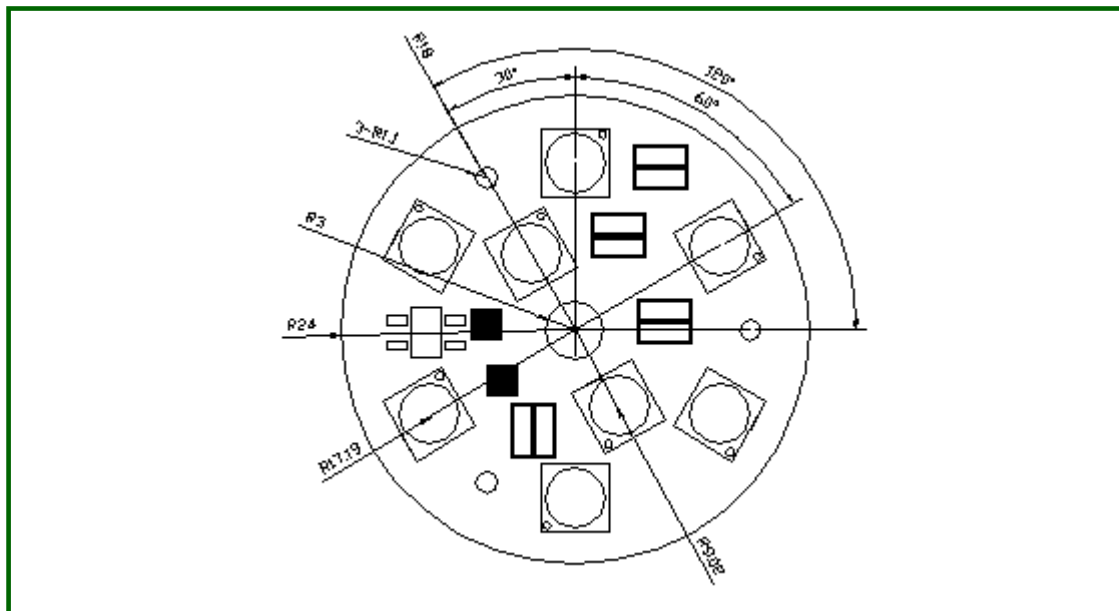


#### Notes :

- [1] All dimensions are in millimeters. (Tolerance :  $\pm 0.2$ )
- [2] Scale : none
- [3] The appearance and specifications of the product may be changed for improvement without notice

## Outline dimensions

### 7. AN4214

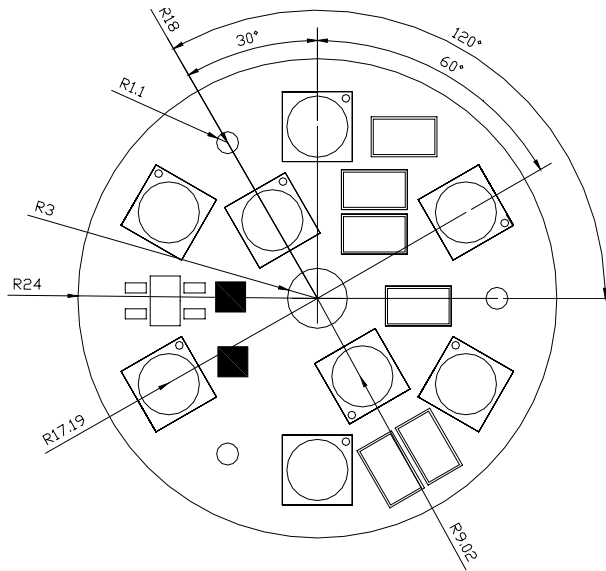


#### Notes :

- [1] All dimensions are in millimeters. (Tolerance :  $\pm 0.2$ )
- [2] Scale : none
- [3] The appearance and specifications of the product may be changed for improvement without notice

## Outline dimensions

## 8. AN4224



Notes :

- [1] All dimensions are in millimeters. (Tolerance :  $\pm 0.2$ )  
 [2] Scale : none  
 [3] The appearance and specifications of the product may be changed for improvement without notice

Rev. 00

## August 2009

**www.ZLED.com**

서식번호 : SSC-QP-7-07-25 (Rev.00)

## Characteristics of AN4240 module

### 1. AN4211/AN4212/AN4213

#### 1-1 Electro-Optical characteristics at 110V[RMS] Ta=25°C

Parameter	Symbol	Value			Unit
		Min	Typ	Max	
Luminous Flux <sup>[1]</sup>	$\Phi_V$ <sup>[2]</sup>	-	200	-	lm
Illuminance <sup>[3]</sup>	$\Phi_I$	-	-	-	lx
Correlated Color Temperature <sup>[4]</sup>	CCT	-	3000	-	K
CRI	R <sub>a</sub>	-	85	-	-
Operating Current	I <sub>opt</sub>	-	40	-	mA [RMS]
Power Dissipation	P <sub>D</sub>	4			W
Operating Frequency	Freq	50 / 60			Hz

#### 1-2 Absolute Maximum Ratings

Parameter	Symbol	Value	Unit
Power Dissipation	P <sub>D</sub>	-	W
Junction Temperature	T <sub>j</sub>	125	°C
Operating Temperature	T <sub>opr</sub>	-30 ~ +85	°C
Storage Temperature	T <sub>stg</sub>	-40 ~ +120	°C
ESD Sensitivity	-	±6,000V HBM	-

#### \*Notes :

- [1] Acriche series maintains a tolerance of ±10% on flux and power measurements.
- [2]  $\Phi_V$  is the total luminous flux output as measured with an integrated sphere.
- [3] Illuminance is measured at 50cm distance
- [4] Correlated Color Temperature is derived from the CIE 1931 Chromaticity diagram.  
CCT ±5% tester tolerance
- [5] 'Operating Voltage' doesn't indicate the maximum voltage which customers use, but it means tolerable voltage according to the voltage variation rate by one's country.  
It is recommended that the temperature of solder pad should be below 70 °C.

## Characteristics of AN4240 module

### 2. AN4221/AN4222/AN4223

#### 2-1 Electro-Optical characteristics at 220V[RMS] Ta=25°C

Parameter	Symbol	Value			Unit
		Min	Typ	Max	
Luminous Flux [1]	$\Phi_V$ [2]	-	200	-	lm
Illuminance [3]	$\Phi_I$	-	-	-	lx
Correlated Color Temperature [4]	CCT	-	3000	-	K
CRI	$R_a$	-	85	-	-
Operating Current	$I_{opt}$	-	20	-	mA [RMS]
Power Dissipation	$P_D$	4			W
Operating Frequency	Freq	50 / 60			Hz

#### 2-2 Absolute Maximum Ratings

Parameter	Symbol	Value	Unit
Power Dissipation	$P_D$	-	W
Junction Temperature	$T_j$	125	°C
Operating Temperature	$T_{opr}$	-30 ~ +85	°C
Storage Temperature	$T_{stg}$	-40 ~ +120	°C
ESD Sensitivity	-	±6,000V HBM	-

\*Notes :

- [1] Acriche series maintains a tolerance of ±10% on flux and power measurements.
- [2]  $\Phi_V$  is the total luminous flux output as measured with an integrated sphere.
- [3] Illuminance is measured at 50cm distance
- [4] Correlated Color Temperature is derived from the CIE 1931 Chromaticity diagram.  
CCT ±5% tester tolerance
- [5] 'Operating Voltage' doesn't indicate the maximum voltage which customers use, but it means tolerable voltage according to the voltage variation rate by one's country.  
It is recommended that the temperature of solder pad should be below 70 °C.

## Characteristics of AN4240 module

### 3. AN4214

#### 3-1 Electro-Optical characteristics at 110V[RMS] Ta=25°C

Parameter	Symbol	Value			Unit
		Min	Typ	Max	
Luminous Flux [1]	$\Phi_V$ [2]	-	400	-	lm
Illuminance [3]	$\Phi_I$	-	-	-	lx
Correlated Color Temperature [4]	CCT	-	3000	-	K
CRI	$R_a$	-	85	-	-
Operating Current	$I_{opt}$	-	80	-	mA [RMS]
Power Dissipation	$P_D$	8			W
Operating Frequency	Freq	50 / 60			Hz

#### 3-2 Absolute Maximum Ratings

Parameter	Symbol	Value	Unit
Power Dissipation	$P_D$	-	W
Junction Temperature	$T_j$	125	°C
Operating Temperature	$T_{opr}$	-30 ~ +85	°C
Storage Temperature	$T_{stg}$	-40 ~ +120	°C
ESD Sensitivity	-	±6,000V HBM	-

\*Notes :

- [1] Acriche series maintains a tolerance of ±10% on flux and power measurements.
- [2]  $\Phi_V$  is the total luminous flux output as measured with an integrated sphere.
- [3] Illuminance is measured at 50cm distance
- [4] Correlated Color Temperature is derived from the CIE 1931 Chromaticity diagram.  
CCT ±5% tester tolerance
- [5] 'Operating Voltage' doesn't indicate the maximum voltage which customers use, but it means tolerable voltage according to the voltage variation rate by one's country.  
It is recommended that the temperature of solder pad should be below 70 °C.

## Characteristics of AN4240 module

### 4. AN4224

#### 4-1 Electro-Optical characteristics at 220V[RMS] Ta=25°C

Parameter	Symbol	Value			Unit
		Min	Typ	Max	
Luminous Flux [1]	$\Phi_V$ [2]	-	400	-	lm
Illuminance [3]	$\Phi_I$	-	-	-	lx
Correlated Color Temperature [4]	CCT	-	3000	-	K
CRI	$R_a$	-	85	-	-
Operating Current	$I_{opt}$	-	40	-	mA [RMS]
Power Dissipation	$P_D$	8			W
Operating Frequency	Freq	50 / 60			Hz

#### 4-2 Absolute Maximum Ratings

Parameter	Symbol	Value	Unit
Power Dissipation	$P_D$	-	W
Junction Temperature	$T_j$	125	°C
Operating Temperature	$T_{opr}$	-30 ~ +85	°C
Storage Temperature	$T_{stg}$	-40 ~ +120	°C
ESD Sensitivity	-	±6,000V HBM	-

#### \*Notes :

- [1] Acriche series maintains a tolerance of ±10% on flux and power measurements.
- [2]  $\Phi_V$  is the total luminous flux output as measured with an integrated sphere.
- [3] Illuminance is measured at 50cm distance
- [4] Correlated Color Temperature is derived from the CIE 1931 Chromaticity diagram.  
CCT ±5% tester tolerance
- [5] 'Operating Voltage' doesn't indicate the maximum voltage which customers use, but it means tolerable voltage according to the voltage variation rate by one's country.  
It is recommended that the temperature of solder pad should be below 70 °C.

# AMEYA360

## Components Supply Platform

### Authorized Distribution Brand :



### Website :

Welcome to visit [www.ameya360.com](http://www.ameya360.com)

### Contact Us :

#### ➤ Address :

401 Building No.5, JiuGe Business Center, Lane 2301, Yishan Rd  
Minhang District, Shanghai , China

#### ➤ Sales :

Direct +86 (21) 6401-6692

Email [amall@ameya360.com](mailto:amall@ameya360.com)

QQ 800077892

Skype ameyasales1 ameyasales2

#### ➤ Customer Service :

Email [service@ameya360.com](mailto:service@ameya360.com)

#### ➤ Partnership :

Tel +86 (21) 64016692-8333

Email [mkt@ameya360.com](mailto:mkt@ameya360.com)