
4.3" GEMmodule™

MK-480272C

Data Sheet

Introduction:

The MK-480272C is a fully integrated 4.3" WQVGA production color display module to support a variety of embedded control interface applications. Featuring the Amulet GEM Graphical OS Chip™ for color displays, the module supports GIF, JPEG and PNG graphic formats in 24-bit color, plus 8-bit alpha blending (transparency channel) found in high-end consumer electronic products.

Features:

- 480x272 TFT LCD - 16:9 (wide aspect ratio) display
- White LED backlight
- Integrated resistive touch panel
- Amulet Graphical OS Chip
- 24 Pin Interconnector
- Royalty-FREE Graphical Operating System
- On-Board memory - 32megabit Serial Flash for storing GUI pages
- Touch Panel Controller - Built into Graphical OS Chip™
- Color Supported - Up to 24bit + 8bit Alpha
- Graphics Supported - GIF, JPEG, PNG
- Backlight can be controlled via the touch panel or HTML command
- Supports Unicode - Foreign language character sets
- Font Converter - Built-in

General Specification

| ITEM | STANDARD VALUE | UNIT |
|---------------------|------------------------------------|-------|
| Pixels (Resolution) | 480 x 272 | dots |
| Outline dimension | 105.5(H) x 67.2 (V) x4.0D | mm |
| Active area | 95.04(H) x 53.856(V) | mm |
| Dot Pitch | 0.198 x 0.198 | mm |
| Luminance | 350 Typ. | Cd/m2 |
| Operation Temp. | 70 - 20 | C |
| View Direction | 6 o'clock | |
| Display Mode | TN / Transmissive / Normally White | |
| Backlight | 10 White LED | |
| Backlight Control | PWM | |
| Data Flash | 32 Megabit | |
| Interface | USB / RS232 / UART | |

Electrical Characteristic

Recommended Operating Conditions

| | |
|------------|----------------|
| 5V | 5V Recommended |
| 5V Current | 300mA Min |

DC Characteristics

| | |
|--|---------------------|
| V core Supply Current | 22mA @1.2V |
| V input Low Level | -0.3 to 0.8V |
| V input High Level | 2V to (Vcc + 0.3V) |
| Pull Up Resistors | 70K to 175KOhms |
| IO Output Current | 8mA |
| Static Current Excluding Power on Reset V core = 1.2V | 600uA |
| Static Current Logic cells consumption, including Power on Reset and all input drivers V core = 1.2V | 30uA |

Pin Descriptions

Pin Type

I = Input

O = Output

P = Power Supply

| Pin # | Signal | Type | Description |
|-------|-----------|------|--|
| 1 | 5V | P | 5V @ 300mA |
| 2 | 5V | P | 5V @ 300mA |
| 3 | GND | P | Ground |
| 4 | GND | P | Ground |
| 5 | SCL | O | Serial Clock |
| 6 | SDA | O | Serial Data |
| 7 | COMMU RXD | I | CommU RXD UART |
| 8 | COMMU TXD | O | CommU TXD UART |
| 9 | PWM 1 | O | Programmable Clock 1 |
| 10 | PWM 2 | O | Programmable Clock 2 |
| 11 | Prog M | I | Program Mode - Float = Prog / GND = Run Note:1 |
| 12 | PWM 0 | O | Programmable Clock 0 |
| 13 | RS232 TXD | O | TXD from RS232 Transceiver |
| 14 | T_CAL | I | Touch Panel Cal. - Float = Cal / GND = Normal Note:1 |
| 15 | PROGU RXD | I | PROGU RXD UART |
| 16 | PROGU TXD | O | PROGU TXD UART |
| 17 | SPI C3 | O | SPI Chip Select 3 |
| 18 | RS232 RXD | I | RXD from RS232 Transceiver |
| 19 | SPI C2 | O | SPI Chip Select 2 |
| 20 | | | |
| 21 | MISO | O | SPI DATA In |
| 22 | SCLK | O | SPI Clock |
| 23 | RESET | O | System Reset by driving pin low |
| 24 | MOSI | O | SPI DATA Out |

Note:1 Internally pulled up. Only pull to ground

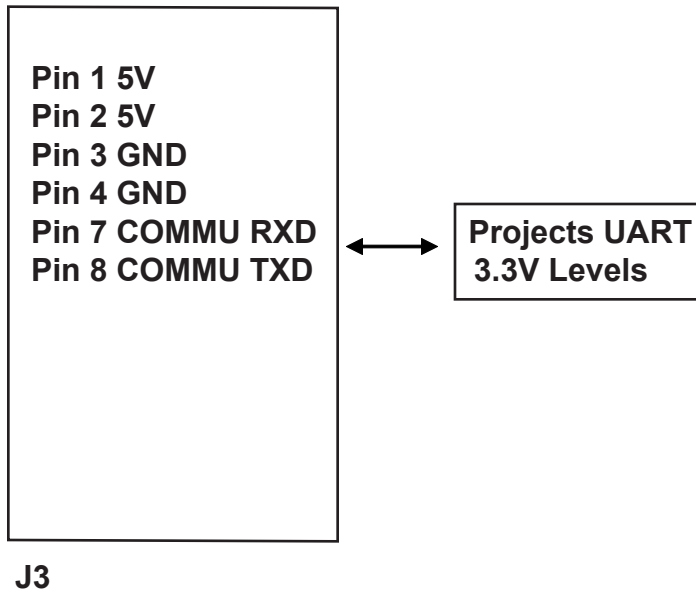
Table 1. Header J3 24pin, 2mm, Hirose DF-11-24DP-2DSA

Mating Connectors

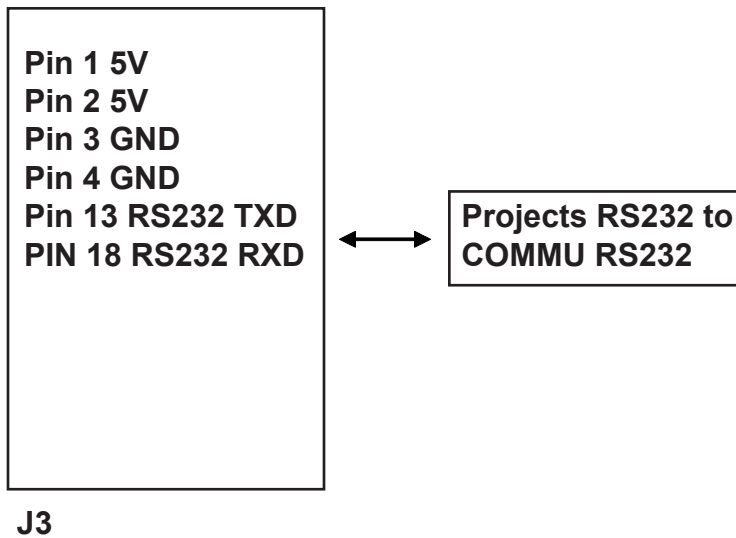
Hirose DF11-24DS-2R26 Straight
 DF11-24DS-2C Right Angle
 DF11-24DS-2DSA Board
 JST PHDR-24VS

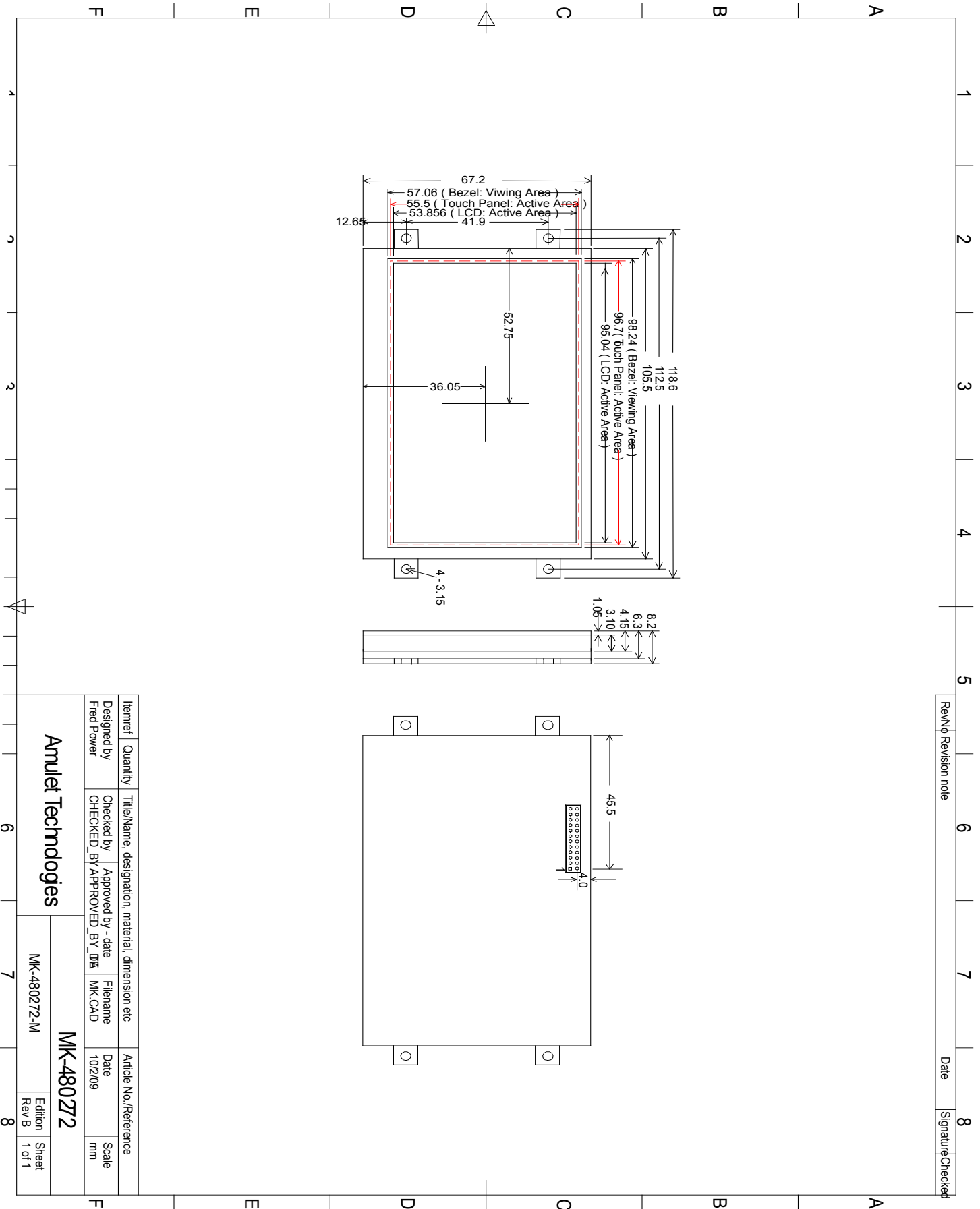
J3 Wiring

Connecting Project via UART



Connecting Project via RS232





RevNo Revision note Date Signature Checked



Tel (408) 374-4956

Fax (408) 374-4941

<http://www.AmuletTechnologies.com>

Sales@AmuletTechnologies.com

Support@AmuletTechnologies.com

700 Gale Drive, Suite 190

Campbell, CA 95008 USA

Disclaimer: The information in this document is provided in connection with Amulet Technologies, LLC (Amulet) products. No license, express or implied, to any intellectual property right is granted by this document or in connection with the sale of Amulet products. EXCEPT AS SET FORTH IN AMULET'S TERMS AND CONDITIONS OF SALE WHERE AMULET IS THE SELLER, AMULET ASSUME NO LIABILITY WHATSOEVER AND DISCLAIM ANY EXPRESS, IMPLIED OR STATUTORY WARRANTY RELATING TO ITS PRODUCTS INCLUDING, BUT NOT LIMITED TO, THE IMPLIED WARRANTY OF MERCHANTABILITY, FITNESS FOR A PARTICULAR PURPOSE, OR NON-INFRINGEMENT. IN NO EVENT SHALL AMULET BE LIABLE FOR ANY DIRECT, INDIRECT, CONSEQUENTIAL, PUNITIVE, SPECIAL OR INCIDENTAL DAMAGES (INCLUDING, WITHOUT LIMITATION, DAMAGES FOR LOSS AND PROFITS, BUSINESS INTERRUPTION, OR LOSS OF INFORMATION) ARISING OUT OF THE USE OR INABILITY TO USE THIS DOCUMENT, EVEN IF AMULET HAS BEEN ADVISED OF THE POSSIBILITY OF SUCH DAMAGES. Amulet makes no representations or warranties with respect to the accuracy or completeness of the contents of this document and reserves the right to make changes to specifications and product descriptions at any time without notice. Amulet does not make any commitment to update the information contained herein. Unless specifically provided otherwise, Amulet products are not approved for use in automotive applications, medical applications (including, but not limited to, life support systems and other medical equipment), avionics, nuclear applications, or other high-risk applications (e.g., applications that, if they fail, can be reasonably expected to result in significant personal injury or death).

AMEYA360

Components Supply Platform

Authorized Distribution Brand :



Website :

Welcome to visit www.ameya360.com

Contact Us :

➤ Address :

401 Building No.5, JiuGe Business Center, Lane 2301, Yishan Rd
Minhang District, Shanghai , China

➤ Sales :

Direct +86 (21) 6401-6692
Email amall@ameya360.com
QQ 800077892
Skype ameyasales1 ameyasales2

➤ Customer Service :

Email service@ameya360.com

➤ Partnership :

Tel +86 (21) 64016692-8333
Email mkt@ameya360.com