

General Specifications

Part Number: SK14DGMG01

Electrical Capacity (Resistive Load)

Logic Level: 0.4VA maximum @ 28V AC/DC maximum
(Applicable Range 0.1mA ~ 0.1A @ 20mV ~ 28V)

Other Ratings

Contact Resistance: 100 milliohms maximum
Insulation Resistance: 100 megohms minimum @ 500V DC
Dielectric Strength: 500V AC minimum between contacts for 1 minute minimum
Mechanical Life: 30,000 operations minimum
Electrical Life: 10,000 operations minimum
Static Capability: Withstands 15 kilovolts ESD
Nominal Operating Force: 0.02Nm (0.18 lb•in)
Contact Timing: Break-before-make
Angle of Throw: 45°



Materials & Finishes

Key: Brass alloy with bright nickel plating and ABS resin handle
Housing: Polyamide
Base: Glass fiber reinforced polyamide
Rotor: Glass fiber reinforced polyamide
Tumbler Plate: Brass
Movable Contacts: Beryllium copper with gold plating
Stationary Contacts: Brass with gold plating
Switch Terminals: Brass with gold plating

Environmental Data

Operating Temperature Range: -40°C through +85°C (-40°F through +185°F)
Humidity: 90 ~ 95% humidity for 240 hours @ 60°C (140°F)
Vibration: 10 ~ 55Hz with peak-to-peak amplitude of 1.5mm traversing the frequency range & returning in 1 minute; 3 right angled directions for 2 hours
Shock: 50G (490m/s²) acceleration (tested in 6 right angled directions, with 5 shocks in each direction)

PCB Processing

Soldering: Manual Soldering: lead-free, see profile below. Do not exceed these specifications.
Cleaning: Hand clean locally using alcohol based solution.

Solder Iron Tip Temperature	370°C
Time on Terminal	4 seconds
Cycles	2

Standards & Certifications

These devices have not been tested for UL recognition or CSA certification.
 These devices are designed for use in a low-voltage, low-current, logic-level circuit.
 When used as intended in a logic-level circuit, the results do not produce hazardous energy.

POLES, CIRCUITS & KEY-REMOVABLE POSITIONS

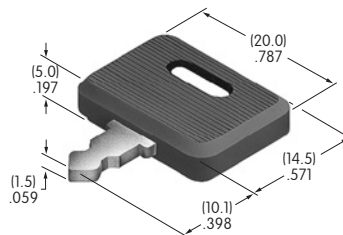
Pole & Throw	Key Positions			Connected Terminals (Terminal numbers are on switch)			Schematic	⊙ = Key Removable ✓ = Maximum Arc
	Pos 1	Pos 2	Pos 3	Pos 1	Pos 2	Pos 3		
SP3T	ON	ON	ON	C-1	C-2	C-3		

KEY

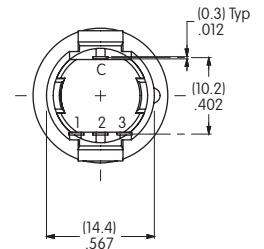
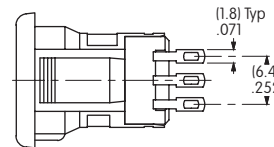
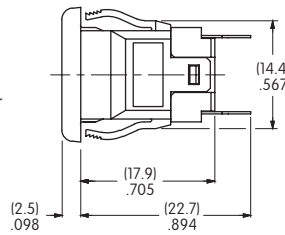
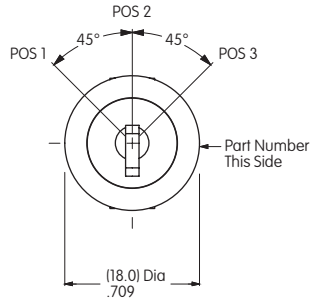
AT4080 Standard Antistatic Plastic Handle

Brass Alloy with Bright Nickel Plating & ABS Resin Handle

2 keys supplied with each switch

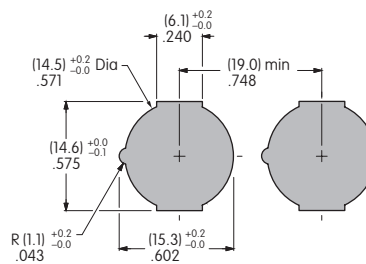


TYPICAL SWITCH DIMENSIONS



PANEL CUTOUT

Panel Thickness Range
.039" ~ .079"
(1.0mm ~ 2.0mm)



AMEYA360

Components Supply Platform

Authorized Distribution Brand :



Website :

Welcome to visit www.ameya360.com

Contact Us :

➤ Address :

401 Building No.5, JiuGe Business Center, Lane 2301, Yishan Rd
Minhang District, Shanghai , China

➤ Sales :

Direct +86 (21) 6401-6692

Email amall@ameya360.com

QQ 800077892

Skype [ameyasales1](#) [ameyasales2](#)

➤ Customer Service :

Email service@ameya360.com

➤ Partnership :

Tel +86 (21) 64016692-8333

Email mkt@ameya360.com