

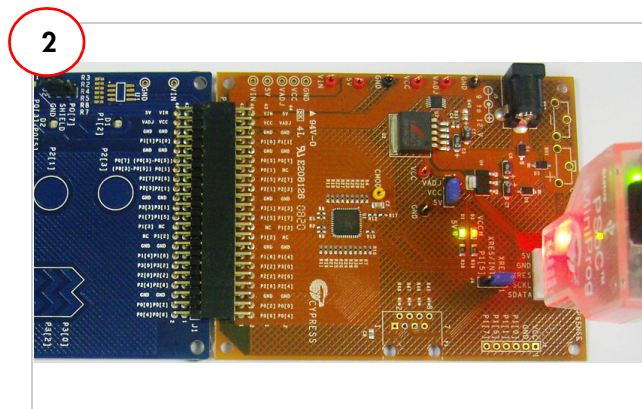
# CY3280-BK1 UNIVERSAL CAPSense® CONTROLLER BASIC KIT 1

## QUICK START GUIDE

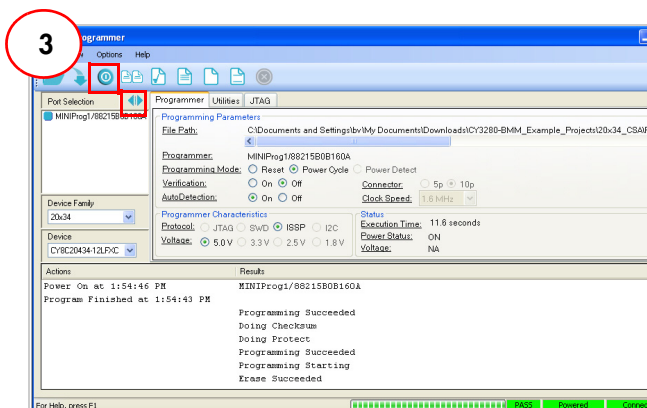


1. Insert the kit CD/DVD into the CD/DVD drive of your PC.
2. Install the kit contents, PSoC Designer, and PSoC Programmer, by clicking on the **Install CY3280-BK1...** button.

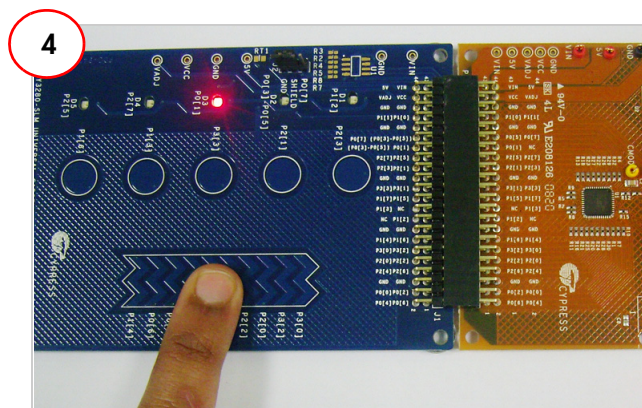
After installation, the kit contents are available at  
<Install\_Directory>\Cypress\CY3280-BK1\<version>



1. Connect the CY3280-SIM board to the CY3280-20x34 UCC board's P2 connector.
2. In the CY3280-20x34 board, ensure that the jumper is placed on header J1 to short pins 2 and 3 (Vcc and 5 V).
3. In the CY3280-SIM board, ensure that the jumper is placed on header J2 to short pins 2 and 3 (Shield and Ground pins).



1. Connect the MiniProg1 to the CY3280-20x34 UCC board's ISSP connector (J3). Connect it to your PC using an USB A to mini-B cable.
2. Open PSoC Programmer.
3. Click **Connect**; connect MiniProg1 to your PC.
4. Click the **Toggle** button to power the board.



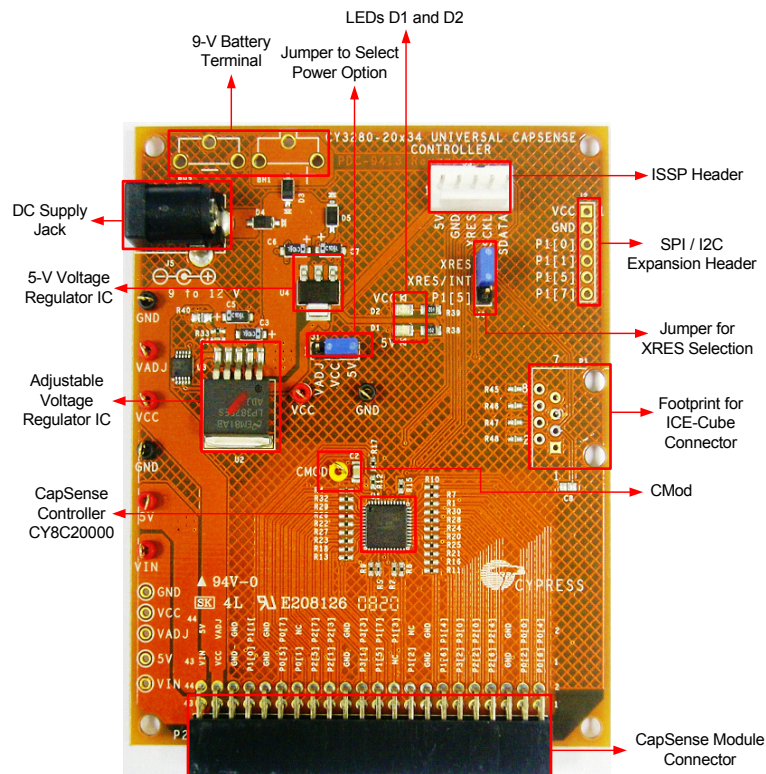
1. Touch and move your finger over the linear slider on the CY3280-SIM module board. The corresponding LEDs on the CY3280-SIM board light up.
2. Touch a button. The corresponding LED on the CY3280-SIM module board lights up.
3. You can touch multiple buttons simultaneously. The linear slider and buttons can be used at the same time.

Repeat steps 2, 3, and 4 to test the CY3280-21x34 CapSense Controller.

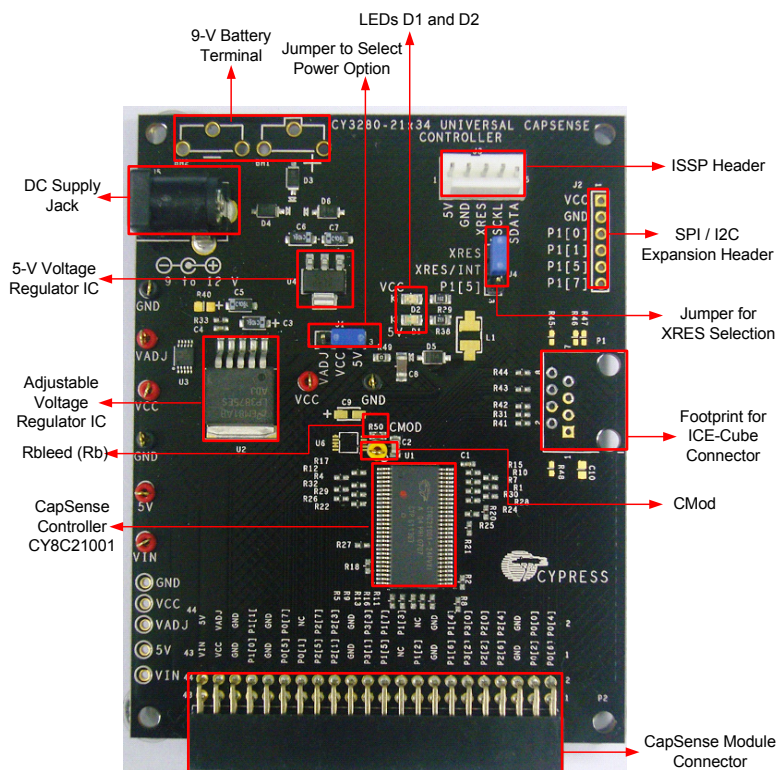
# CY3280-BK1 UNIVERSAL CAPSENSE® CONTROLLER BASIC KIT 1

## QUICK START GUIDE

### CY3280-20x34 Board Details



### CY3280-21x34 Board Details



For the latest information about this kit, visit  
<http://www.cypress.com/go/CY3280-BK1>



# AMEYA360

Components Supply Platform

Authorized Distribution Brand :



Website :

Welcome to visit [www.ameya360.com](http://www.ameya360.com)

Contact Us :

➤ Address :

401 Building No.5, JiuGe Business Center, Lane 2301, Yishan Rd  
Minhang District, Shanghai , China

➤ Sales :

Direct     +86 (21) 6401-6692  
  
Email        amall@ameya360.com  
  
QQ            800077892  
  
Skype        ameyasales1 ameyasales2

➤ Customer Service :

Email        service@ameya360.com

➤ Partnership :

Tel            +86 (21) 64016692-8333  
  
Email        mkt@ameya360.com