

# Autonomous Audio Headset Switch with Reduced GND Switch $R_{ON}$ and FM Capability

Check for Samples: [TS3A226AE](#)

## FEATURES

- Ground FET Switches (60m $\Omega$  typical)
- Autonomous Detection of Headset Types: 3-Poles or 4-Poles (with MIC on SLEEVE or RING2)
- Microphone Line Switches
- Supports FM Signal Transmission Through the Ground FETs
- Reduction of Click/Pop Noise
- VDD Range: 2.6 V – 4.7 V
- THD (Mic): 0.002% Typical
- Low Current Consumption: 6.5- $\mu$ A Typical
- $\pm 8$ kV Contact Discharge (IEC 61000-4-2) ESD Performance on SLEEVE and RING2 Pins

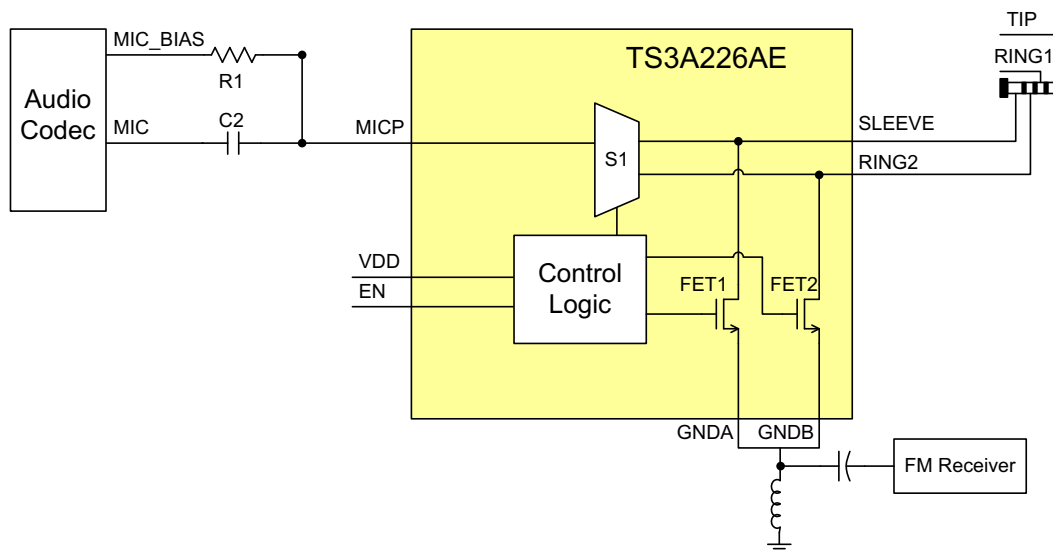
## APPLICATIONS

- Mobile Phones / Tablet PCs
- Notebook/Ultrabook Computers

## DESCRIPTION

The TS3A226AE is an audio headset switch that detects 3- or 4-pole 3.5mm accessories. For a 4-pole accessory with a microphone, the TS3A226AE also detects the MIC location and routes the microphone and ground signals automatically. The ground signal is routed through a pair of low-impedance ground FETs (60m $\Omega$  typical), resulting minimal impact on audio cross-talk performance. The autonomous detection feature allows end users to plug in accessories with different audio pole configurations into the mobile device and have them operate properly with no added software control and complexity. The ground FETs of the device are designed to allow FM signal pass-through, making it possible to use the ground line of the headset as an FM antenna in mobile audio application.

The TS3A226AE is packaged within a 1.2mm x 1.2mm WCSP package, making it suitable for use in mobile application.



**Figure 1. Typical Application Diagram**

## ORDERING INFORMATION

For the most current package and ordering information, see the Package Option Addendum at the end of this document, or see the TI web site at [www.ti.com](http://www.ti.com)



Please be aware that an important notice concerning availability, standard warranty, and use in critical applications of Texas Instruments semiconductor products and disclaimers thereto appears at the end of this data sheet.

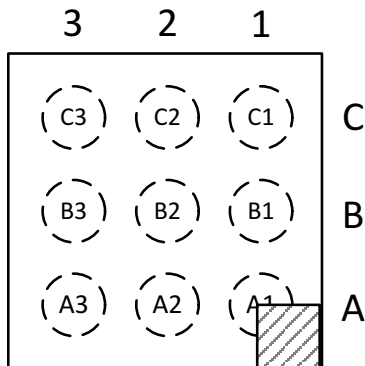
# TS3A226AE

SCDS346A – JUNE 2013 – REVISED JULY 2013

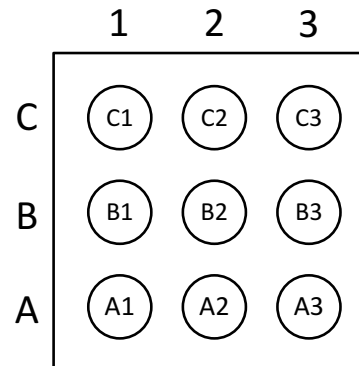
[www.ti.com](http://www.ti.com)


These devices have limited built-in ESD protection. The leads should be shorted together or the device placed in conductive foam during storage or handling to prevent electrostatic damage to the MOS gates.

## PACKAGE; YFF-WCSP



Top View/Footprint



Bump View

Die Size: 1.2mm × 1.2mm

Bump Size: 0.25mm

Bump Pitch: 0.4mm

### TS3A226AE Pin Mapping (Top View)

	3	2	1
C	GND	TIP	EN
B	SLEEVE	GNDA	MICp
A	RING2	GNDB	VDD

### PIN FUNCTIONS

PIN			DESCRIPTION
NUMBER	NAME	TYPE	
A1	VDD	Supply	Power supply for the chip.
A2	GNDB	Ground	FET2 ground reference.
A3	RING2	I/O	Connected to the RING2 segment of the jack. The pin will be routed automatically by TS3A226AE to either MICp or GNDB depending on the type of accessory.
B1	MICp	I/O	Microphone signal connection to codec. Microphone bias should be fed into this pin.
B2	GNDA	Ground	FET1 ground reference.
B3	SLEEVE	I/O	Connected to the SLEEVE segment of the jack. The pin will be routed automatically by TS3A226AE to either MICp or GNDA depending on the type of accessory.
C1	EN	Input	A rising edge triggers the detection sequence. This pin can be connected to the headset jack to allow automatic pull-up to supply after headset insertion.
C2	TIP	I/O	Connected to the TIP segment of the headphone jack.
C3	GND	Ground	Chip ground reference.

## S1 MUX DETAIL

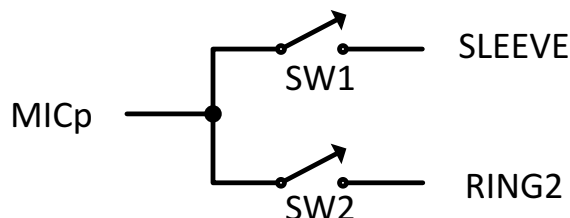


Figure 2. S1 Mux Detail

## FUNCTIONAL TABLES: INTERNAL SWITCHES

EN	Accessory Type	Accessory Configuration	SW1	SW2	FET1	FET2
0	N/A	—	High Z	High Z	High Z	High Z
1	TRS 3-pole Headphone or Speaker	TIP = Audio Left Ring = Audio Right Sleeve = <b>Ground</b>	On	On	On	On
1	TRRS 4-pole Headphone	TIP = Audio Left Ring1 = Audio Right Ring2 = <b>Ground</b> Sleeve = <b>Microphone</b>	On	High Z	High Z	On
1	TRRS 4-pole Headphone	TIP = Audio Left Ring1 = Audio Right Ring2 = <b>Microphone</b> Sleeve = <b>Ground</b>	High Z	On	On	High Z
1	N/A	—	On	On	On	On

## ABSOLUTE MAXIMUM RATINGS

over operating free-air temperature range (unless otherwise noted)<sup>(1)</sup>

		VALUE	UNIT
V <sub>I</sub>	Voltage range on VDD <sup>(2)</sup>	–0.3 to 5	V
	Voltage range on EN, MICP, RING2, SLEEVE, TIP <sup>(2)</sup>	–0.3 to V <sub>DD</sub> +0.5	V
T <sub>A</sub>	Operating ambient temperature range <sup>(3)</sup>	–40 to 85	°C
T <sub>J (MAX)</sub>	Maximum operating junction temperature	125	°C
T <sub>stg</sub>	Storage temperature range	–65 to 150	°C
ESD rating	Charge device model (JESD 22 C101)	500	V
	Human body model(JESD 22 A114)	2	kV
	Contact discharge on RING2, SLEEVE, TIP (IEC 61000-4-2)	8	kV

- (1) Stresses beyond those listed under absolute maximum ratings may cause permanent damage to the device. These are stress ratings only, and functional operation of the device at these or any other conditions beyond those indicated under recommended operating conditions is not implied. Exposure to absolute–maximum–rated conditions for extended periods may affect device reliability.
- (2) All voltage values are with respect to network ground terminal.
- (3) In applications where high power dissipation and/or poor package thermal resistance is present, the maximum ambient temperature may have to be derated. Maximum ambient temperature [T<sub>A(max)</sub>] is dependent on the maximum operating junction temperature [T<sub>J(max)</sub>], the maximum power dissipation of the device in the application [P<sub>D(max)</sub>], and the junction-to-ambient thermal resistance of the part/package in the application (θ<sub>JA</sub>), as given by the following equation: T<sub>A(max)</sub> = T<sub>J(max)</sub> – (θ<sub>JA</sub> × P<sub>D(max)</sub>)

# TS3A226AE

SCDS346A – JUNE 2013 – REVISED JULY 2013

[www.ti.com](http://www.ti.com)

## RECOMMENDED OPERATING CONDITIONS

over operating free-air temperature range (unless otherwise noted)

		MIN	MAX	UNIT
V <sub>DD</sub>	Supply voltage range	2.6	4.5	V
V <sub>IO</sub>	Input/Output voltage range (EN, MICP, RING2, SLEEVE, TIP)	0	V <sub>DD</sub>	V
V <sub>IO(TIP)</sub>	Input/Output voltage range for TIP	-2.0	V <sub>DD</sub>	V
V <sub>IH</sub>	Input Logic High for EN	V <sub>DD</sub> = 2.6 V	1.16	V <sub>DD</sub>
		V <sub>DD</sub> = 3.3 V	1.24	V <sub>DD</sub>
		V <sub>DD</sub> = 4.5 V	1.48	V <sub>DD</sub>
V <sub>IL</sub>	Input Logic Low for EN	V <sub>DD</sub> = 2.6 V	0	0.19
		V <sub>DD</sub> = 3.3 V	0	0.3
		V <sub>DD</sub> = 4.5 V	0	0.5
T <sub>A</sub>	Operating temperature range	-40	85	°C

## KEY ELECTRICAL CHARACTERISTICS

Unless otherwise noted the specification applies over the V<sub>DD</sub> range and operating junction temperature -40°C ≤ T<sub>A</sub> ≤ 70°C. Typical values are for V<sub>DD</sub> = 3.3V and T<sub>J</sub> = 25°C.

PARAMETER		TEST CONDITIONS	MIN	TYP	MAX	UNIT
V <sub>DD</sub>	Input Voltage Range		2.6	3.3	4.5	V
I <sub>DD</sub>	Quiescent Current	V <sub>DD</sub> = 4.5 V, V <sub>MICp</sub> = 1.8 V to V <sub>DD</sub> , EN=L or EN=H (after detection)		6.5	14	μA
SWITCH RESISTANCE						
R <sub>F1</sub>	FET1 On Resistance	V <sub>DD</sub> = 2.6 V, V <sub>GND</sub> = 0 V, I <sub>GND</sub> = 10 mA		60	85	mΩ
R <sub>F2</sub>	FET2 On Resistance			60	85	
R <sub>SW1</sub>	SW1 On Resistance	V <sub>DD</sub> = 2.6 V, V <sub>SLEEVE/RING2</sub> = 0 V to 2.6 V, I <sub>MIC</sub> = ±10 mA		8.5	10.5	Ω
R <sub>SW2</sub>	SW2 On Resistance			8.5	10.5	
SWITCH LEAKAGE CURRENT						
I <sub>OFF-0.1</sub>	FET1 and FET2 off leakage	V <sub>IN</sub> = 0 V to 2.6 V, V <sub>OUT</sub> = 0 V, V <sub>DD</sub> = 4.5 V			1	μA
I <sub>OFF-10</sub>	SW1, SW2 off leakage				1	
I <sub>ON-10</sub>	SW1, SW2 on leakage				1	
SWITCH DYNAMIC CHARACTERISTICS						
BW <sub>F1</sub>	FET1 Bandwidth	V = 60 mV <sub>PP</sub> , I <sub>bias</sub> = 10 mA		160	200	MHz
BW <sub>F2</sub>	FET2 Bandwidth			160	200	
PSR <sub>217</sub>	Power Supply Rejection, R <sub>L</sub> = 50 Ω	V = 200 mV <sub>PP</sub> , f = 217 Hz		-110		dB
PSR <sub>1k</sub>		V = 200 mV <sub>PP</sub> , f = 1 kHz		-100		dB
PSR <sub>20k</sub>		V = 200 mV <sub>PP</sub> , f = 20 kHz		-85		dB
ISO <sub>S1</sub>	SLEEVE or RING2 to MICP Isolation	V = 200 mV <sub>PP</sub> , f = 20 kHz, R <sub>L</sub> = 50 Ω		-80		dB
SEP <sub>S1</sub>	SLEEVE to RING2 Separation	V = 200 mV <sub>PP</sub> , f = 20 kHz, R <sub>L</sub> = 50 Ω (see <a href="#">Figure 5</a> )		-80		dB
THD <sub>10</sub>	Total Harmonic Distortion	V = 10 mV <sub>PP</sub> , f = 20-20 kHz, R <sub>S</sub> = 600 Ω		0.01%		
THD <sub>200</sub>		V = 200 mV <sub>PP</sub> , f = 20-20 kHz, R <sub>S</sub> = 600 Ω		0.002%		
TIMING CHARACTERISTICS						
t <sub>dect</sub>	Total detection time	From EN=H to S1 switch(es) closing		180		ms

## TYPICAL CHARACTERISTICS

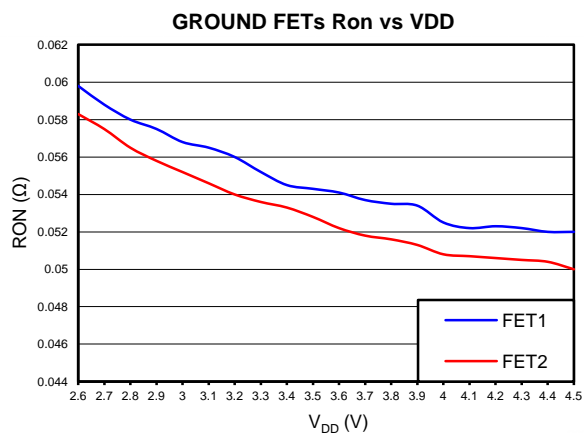


Figure 3.

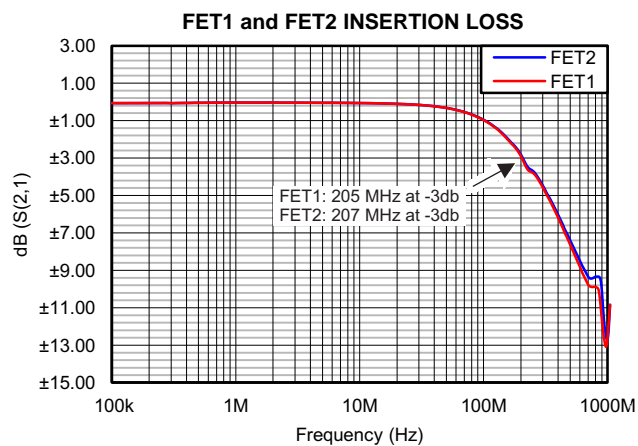


Figure 4.

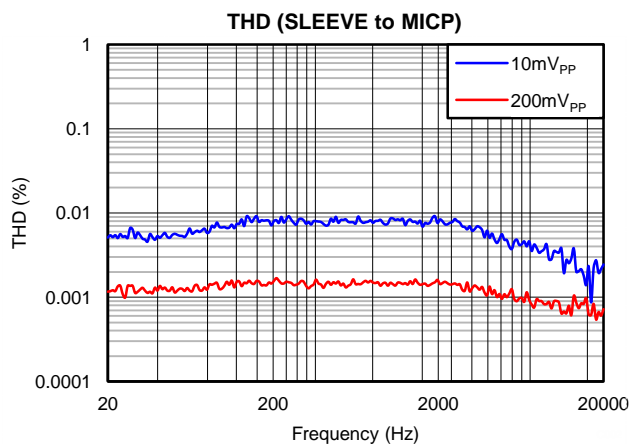


Figure 5.

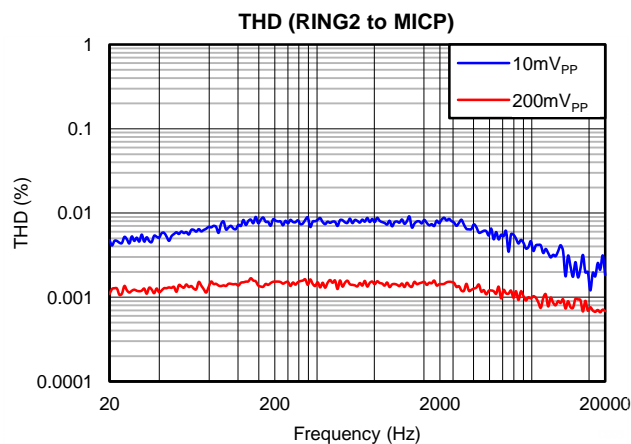


Figure 6.

## REVISION HISTORY

Changes from Original (June 2013) to Revision A	Page
• Removed Machine Model ESD specification. ....	<a href="#">3</a>
• Added EN=L or EN=H (after detection) to I <sub>DD</sub> TEST CONDITIONS. ....	<a href="#">4</a>
• Added typical values to R <sub>SW1</sub> and R <sub>SW2</sub> . ....	<a href="#">4</a>
• Added t <sub>dect</sub> PARAMETER to KEY ELECTRICAL CHARACTERISTICS table. ....	<a href="#">4</a>

## PACKAGING INFORMATION

Orderable Device	Status (1)	Package Type	Package Drawing	Pins	Package Qty	Eco Plan (2)	Lead/Ball Finish	MSL Peak Temp (3)	Op Temp (°C)	Device Marking (4/5)	Samples
TS3A226AEYFFR	ACTIVE	DSBGA	YFF	9	3000	Green (RoHS & no Sb/Br)	SNAGCU	Level-1-260C-UNLIM	-40 to 85	YP2 26AE	<a href="#">Samples</a>

(1) The marketing status values are defined as follows:

**ACTIVE:** Product device recommended for new designs.

**LIFEBUY:** TI has announced that the device will be discontinued, and a lifetime-buy period is in effect.

**NRND:** Not recommended for new designs. Device is in production to support existing customers, but TI does not recommend using this part in a new design.

**PREVIEW:** Device has been announced but is not in production. Samples may or may not be available.

**OBSOLETE:** TI has discontinued the production of the device.

(2) Eco Plan - The planned eco-friendly classification: Pb-Free (RoHS), Pb-Free (RoHS Exempt), or Green (RoHS & no Sb/Br) - please check <http://www.ti.com/productcontent> for the latest availability information and additional product content details.

**TBD:** The Pb-Free/Green conversion plan has not been defined.

**Pb-Free (RoHS):** TI's terms "Lead-Free" or "Pb-Free" mean semiconductor products that are compatible with the current RoHS requirements for all 6 substances, including the requirement that lead not exceed 0.1% by weight in homogeneous materials. Where designed to be soldered at high temperatures, TI Pb-Free products are suitable for use in specified lead-free processes.

**Pb-Free (RoHS Exempt):** This component has a RoHS exemption for either 1) lead-based flip-chip solder bumps used between the die and package, or 2) lead-based die adhesive used between the die and leadframe. The component is otherwise considered Pb-Free (RoHS compatible) as defined above.

**Green (RoHS & no Sb/Br):** TI defines "Green" to mean Pb-Free (RoHS compatible), and free of Bromine (Br) and Antimony (Sb) based flame retardants (Br or Sb do not exceed 0.1% by weight in homogeneous material)

(3) MSL, Peak Temp. -- The Moisture Sensitivity Level rating according to the JEDEC industry standard classifications, and peak solder temperature.

(4) There may be additional marking, which relates to the logo, the lot trace code information, or the environmental category on the device.

(5) Multiple Device Markings will be inside parentheses. Only one Device Marking contained in parentheses and separated by a "~" will appear on a device. If a line is indented then it is a continuation of the previous line and the two combined represent the entire Device Marking for that device.

**Important Information and Disclaimer:** The information provided on this page represents TI's knowledge and belief as of the date that it is provided. TI bases its knowledge and belief on information provided by third parties, and makes no representation or warranty as to the accuracy of such information. Efforts are underway to better integrate information from third parties. TI has taken and continues to take reasonable steps to provide representative and accurate information but may not have conducted destructive testing or chemical analysis on incoming materials and chemicals. TI and TI suppliers consider certain information to be proprietary, and thus CAS numbers and other limited information may not be available for release.

In no event shall TI's liability arising out of such information exceed the total purchase price of the TI part(s) at issue in this document sold by TI to Customer on an annual basis.

**TAPE AND REEL INFORMATION**


\*All dimensions are nominal

Device	Package Type	Package Drawing	Pins	SPQ	Reel Diameter (mm)	Reel Width W1 (mm)	A0 (mm)	B0 (mm)	K0 (mm)	P1 (mm)	W (mm)	Pin1 Quadrant
TS3A226AEYFFR	DSBGA	YFF	9	3000	180.0	8.4	1.46	1.36	0.7	4.0	8.0	Q1



## TAPE AND REEL BOX DIMENSIONS

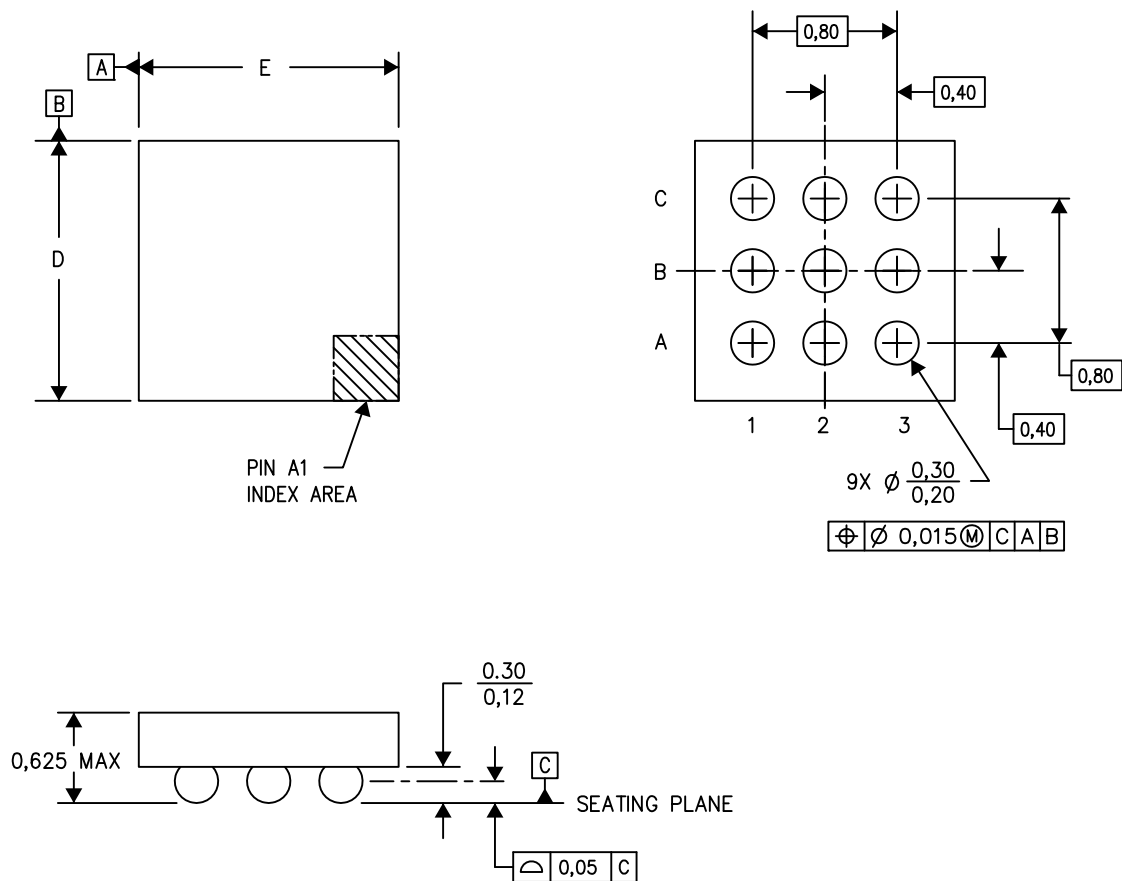


\*All dimensions are nominal

Device	Package Type	Package Drawing	Pins	SPQ	Length (mm)	Width (mm)	Height (mm)
TS3A226AEYFFR	DSBGA	YFF	9	3000	182.0	182.0	17.0

YFF (S-XBGA-N9)

DIE-SIZE BALL GRID ARRAY



D: Max = 1.386 mm, Min = 1.326 mm

E: Max = 1.286 mm, Min = 1.226 mm

4207625-6/AM 06/13

- NOTES: A. All linear dimensions are in millimeters. Dimensioning and tolerancing per ASME Y14.5M-1994.  
 B. This drawing is subject to change without notice.  
 C. NanoFree™ package configuration.

## IMPORTANT NOTICE

Texas Instruments Incorporated and its subsidiaries (TI) reserve the right to make corrections, enhancements, improvements and other changes to its semiconductor products and services per JESD46, latest issue, and to discontinue any product or service per JESD48, latest issue. Buyers should obtain the latest relevant information before placing orders and should verify that such information is current and complete. All semiconductor products (also referred to herein as "components") are sold subject to TI's terms and conditions of sale supplied at the time of order acknowledgment.

TI warrants performance of its components to the specifications applicable at the time of sale, in accordance with the warranty in TI's terms and conditions of sale of semiconductor products. Testing and other quality control techniques are used to the extent TI deems necessary to support this warranty. Except where mandated by applicable law, testing of all parameters of each component is not necessarily performed.

TI assumes no liability for applications assistance or the design of Buyers' products. Buyers are responsible for their products and applications using TI components. To minimize the risks associated with Buyers' products and applications, Buyers should provide adequate design and operating safeguards.

TI does not warrant or represent that any license, either express or implied, is granted under any patent right, copyright, mask work right, or other intellectual property right relating to any combination, machine, or process in which TI components or services are used. Information published by TI regarding third-party products or services does not constitute a license to use such products or services or a warranty or endorsement thereof. Use of such information may require a license from a third party under the patents or other intellectual property of the third party, or a license from TI under the patents or other intellectual property of TI.

Reproduction of significant portions of TI information in TI data books or data sheets is permissible only if reproduction is without alteration and is accompanied by all associated warranties, conditions, limitations, and notices. TI is not responsible or liable for such altered documentation. Information of third parties may be subject to additional restrictions.

Resale of TI components or services with statements different from or beyond the parameters stated by TI for that component or service voids all express and any implied warranties for the associated TI component or service and is an unfair and deceptive business practice. TI is not responsible or liable for any such statements.

Buyer acknowledges and agrees that it is solely responsible for compliance with all legal, regulatory and safety-related requirements concerning its products, and any use of TI components in its applications, notwithstanding any applications-related information or support that may be provided by TI. Buyer represents and agrees that it has all the necessary expertise to create and implement safeguards which anticipate dangerous consequences of failures, monitor failures and their consequences, lessen the likelihood of failures that might cause harm and take appropriate remedial actions. Buyer will fully indemnify TI and its representatives against any damages arising out of the use of any TI components in safety-critical applications.

In some cases, TI components may be promoted specifically to facilitate safety-related applications. With such components, TI's goal is to help enable customers to design and create their own end-product solutions that meet applicable functional safety standards and requirements. Nonetheless, such components are subject to these terms.

No TI components are authorized for use in FDA Class III (or similar life-critical medical equipment) unless authorized officers of the parties have executed a special agreement specifically governing such use.

Only those TI components which TI has specifically designated as military grade or "enhanced plastic" are designed and intended for use in military/aerospace applications or environments. Buyer acknowledges and agrees that any military or aerospace use of TI components which have **not** been so designated is solely at the Buyer's risk, and that Buyer is solely responsible for compliance with all legal and regulatory requirements in connection with such use.

TI has specifically designated certain components as meeting ISO/TS16949 requirements, mainly for automotive use. In any case of use of non-designated products, TI will not be responsible for any failure to meet ISO/TS16949.

### Products

Audio	<a href="http://www.ti.com/audio">www.ti.com/audio</a>
Amplifiers	<a href="http://amplifier.ti.com">amplifier.ti.com</a>
Data Converters	<a href="http://dataconverter.ti.com">dataconverter.ti.com</a>
DLP® Products	<a href="http://www.dlp.com">www.dlp.com</a>
DSP	<a href="http://dsp.ti.com">dsp.ti.com</a>
Clocks and Timers	<a href="http://www.ti.com/clocks">www.ti.com/clocks</a>
Interface	<a href="http://interface.ti.com">interface.ti.com</a>
Logic	<a href="http://logic.ti.com">logic.ti.com</a>
Power Mgmt	<a href="http://power.ti.com">power.ti.com</a>
Microcontrollers	<a href="http://microcontroller.ti.com">microcontroller.ti.com</a>
RFID	<a href="http://www.ti-rfid.com">www.ti-rfid.com</a>
OMAP Applications Processors	<a href="http://www.ti.com/omap">www.ti.com/omap</a>
Wireless Connectivity	<a href="http://www.ti.com/wirelessconnectivity">www.ti.com/wirelessconnectivity</a>

### Applications

Automotive and Transportation	<a href="http://www.ti.com/automotive">www.ti.com/automotive</a>
Communications and Telecom	<a href="http://www.ti.com/communications">www.ti.com/communications</a>
Computers and Peripherals	<a href="http://www.ti.com/computers">www.ti.com/computers</a>
Consumer Electronics	<a href="http://www.ti.com/consumer-apps">www.ti.com/consumer-apps</a>
Energy and Lighting	<a href="http://www.ti.com/energy">www.ti.com/energy</a>
Industrial	<a href="http://www.ti.com/industrial">www.ti.com/industrial</a>
Medical	<a href="http://www.ti.com/medical">www.ti.com/medical</a>
Security	<a href="http://www.ti.com/security">www.ti.com/security</a>
Space, Avionics and Defense	<a href="http://www.ti.com/space-avionics-defense">www.ti.com/space-avionics-defense</a>
Video and Imaging	<a href="http://www.ti.com/video">www.ti.com/video</a>

### TI E2E Community

[e2e.ti.com](http://e2e.ti.com)

# AMEYA360

Components Supply Platform

Authorized Distribution Brand :



Website :

Welcome to visit [www.ameya360.com](http://www.ameya360.com)

Contact Us :

➤ Address :

401 Building No.5, JiuGe Business Center, Lane 2301, Yishan Rd  
Minhang District, Shanghai , China

➤ Sales :

Direct     +86 (21) 6401-6692  
  
Email        amall@ameya360.com  
  
QQ            800077892  
  
Skype        ameyasales1 ameyasales2

➤ Customer Service :

Email        service@ameya360.com

➤ Partnership :

Tel            +86 (21) 64016692-8333  
  
Email        mkt@ameya360.com