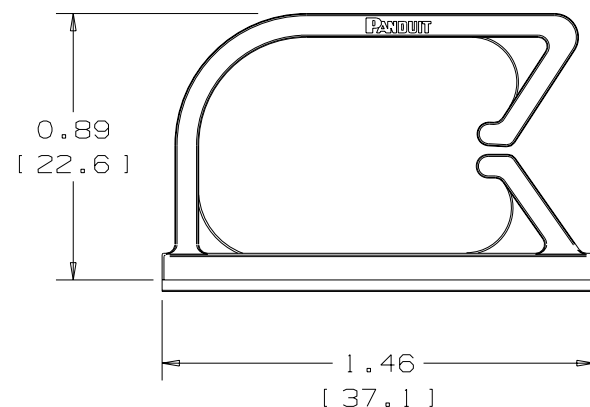
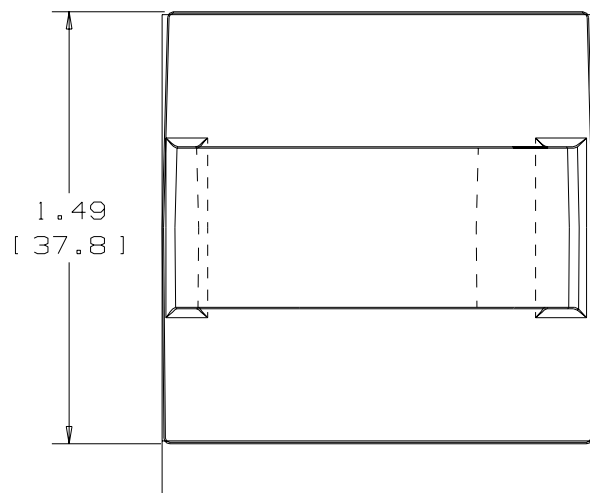


THIS COPY IS PROVIDED ON A RESTRICTED BASIS AND IS NOT TO BE USED IN ANY WAY DETRIMENTAL TO THE INTERESTS OF PANDUIT CORP.



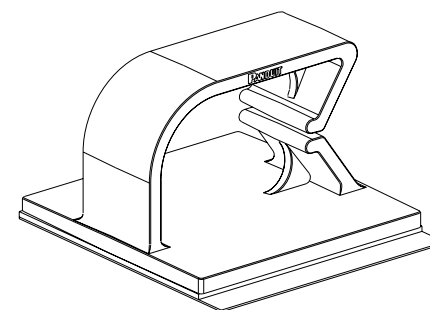
ADHESIVE TAPE: PRESSURE SENSITIVE FOAM
0.04 [1.0] THICK WITH RUBBER ADHESIVE
AND PROTECTIVE LINER. MOUNT IS DESIGNED
TO SUPPORT 1.09 lbs. [493g] MAXIMUM
WEIGHT ON A CLEAN, DRY, SMOOTH, GREASE-
FREE SURFACE.

PANDUIT PART NO. *	WEIGHT LBS / 100 [G] / PCS.
BEC75-A	1.28 [582]
BEC75-AT	1.28 [582]


NO WARRANTY, EXPRESSED OR IMPLIED, IS MADE BY PANDUIT WITH RESPECT TO ADHESIVE BOND PERFORMANCE. AMONG OTHER THINGS, THE CONDITIONS UNDER WHICH THESE MOUNTS MAY BE APPLIED AND/OR THE SURFACE TO WHICH THEY MAY BE APPLIED ARE BEYOND PANDUIT'S CONTROL.

NOTES:

1. SEE CURRENT PRICE SHEET FOR PART NUMBER SUFFIX DESIGNATION FOR PACKAGE SIZE AND PART COLOR.
2. TO APPLY MOUNT: a) REMOVE PROTECTIVE LINER: b) PLACE IN DESIRED LOCATION: c) APPLY PRESSURE TO TOP OF MOUNT.



SCALE: FULL

DIMENSIONS IN BRACKETS ARE METRIC [mm]			
CAD FILENAME/LAYERS		G00239CH_PB_BEC75_01	
		TINLEY PARK, ILLINOIS	
BEC75 BEVEL ENTRY CLIP			
UNLESS OTHERWISE SPECIFIED, DIMENSIONAL TOLERANCES ARE: (.X) ± N/A (.XXX) ± N/A (.XX) ± .020 (.5) ANGLES ± N/A		UNLESS OTHERWISE SPECIFIED, ALL DIMENSIONS ARE GIVEN IN INCHES, THIRD ANGLE PROJECTION.	
DRAWN BY	MAT'L: 6/6 NYLON	SCALE	
DATE		DRAWING NO.	DWG SIZE
CHK'D		GB0239CH	A
GDH		1	1/2X
11-30-94			

AMEYA360

Components Supply Platform

Authorized Distribution Brand :



Website :

Welcome to visit www.ameya360.com

Contact Us :

➤ Address :

401 Building No.5, JiuGe Business Center, Lane 2301, Yishan Rd
Minhang District, Shanghai , China

➤ Sales :

Direct +86 (21) 6401-6692
Email amall@ameya360.com
QQ 800077892
Skype ameyasales1 ameyasales2

➤ Customer Service :

Email service@ameya360.com

➤ Partnership :

Tel +86 (21) 64016692-8333
Email mkt@ameya360.com