

**B&B ELECTRONICS**

# 10/100/1000 Mbps Optical Ethernet Demarcation Unit

**IE-Multiway**

## PRODUCT FEATURES

- Versatile 4 port device
- SNMP Manageable
- Supports SFP fibers
- Extended Temperature
- Supports OAM, VLAN, 1+1 Revertive
- RS-232 CLI (Command Line Interface) Console Port

The IE-MultiWay is a value-based, Carrier-class managed Gigabit Ethernet solution that is ideal for use as a CPE device at the customer's network edge as well as in a fiber infrastructure. The IE-MultiWay comes standard with two SFP uplink ports for the providers' network connection and two 10/100/1000Base-T copper ports.

There are four distinct DIP Switch selectable configurations that the IE-MultiWay supports. Among them are a 1+1 Uplink Protection revertive mode, 1+1 Uplink Protection non-revertive mode, a 4-port Gigabit Switch, and a Dual Copper to Fiber SFP Media/Mode Converter (two gigabit fiber media converters in one).

The IE-MultiWay is an ideal solution for service providers' fiber networks because it combines media conversion with an advanced features set for network management and trouble shooting, including port based VLAN and VLAN trunks, IEEE 802.1ad (Q-in-Q) and a user definable EtherType. Information such as interface statistics, RMON1 statistics, and OAM status and control are a few of the many accessible features from the Serial CLI, Telnet CLI and SNMP Management Software.

## ACCESSORIES

- 806-39105 - DIN Rail Clip
- 806-39638 - Double-USB Power Cable, 36"/.9m
- 825-39951 - Serial Cable, MiniJack to DB9 (female)
- 895-39229 - Wall Mount Bracket

## ORDERING INFORMATION

MODEL NUMBER	FIBER	FIBER PORTS	ETHERNET PORTS	ETHERNET CONNECTOR
<b>IE-Multiway With AC to DC Power Adapter</b>				
858-11121	*SFP	2	2	RJ45
<b>IE-Multiway With Out AC to DC Power Adapter</b>				
854-11121	*SFP	2	2	RJ45

\* SFP modules are sold separately. Two (2) SFP transceivers are needed for full device functionality.

## IE-SFP MODULES: 100 TO 155 MBPS

MODEL NUMBER	DESCRIPTION	FIBER TYPE	RANGE	POWER BUDGET
808-38101	MM850	LC	2 km	14.5 (db)
808-38103	SM1310	LC	15 km	13 (db)
808-38104	SM1310/PLUS	LC	40 km	31 (db)
808-38105	SM1550/LONG	LC	80 km	31 (db)

## IE-SFP MODULES: 1 GBPS GIGABIT ETHERNET

MODEL NUMBER	DESCRIPTION	FIBER TYPE	RANGE	POWER BUDGET
808-38201	MM850	LC	550 m	7.5 (db)
808-38202	SM1310	LC	10 km	13 (db)
808-38203	SM1310/PLUS	LC	30 km	17 (db)
808-38204	SM1550/LONG	LC	40 km	17 (db)
808-38205	SM1550/XLONG	LC	70 km	23 (db)



## IN THE FIELD

Intelligent Facilities:  
Controlling Access & Security

Industry: Security  
Product: IE-MultiWay Ethernet  
Media Converter



[www.bb-elec.com/  
Access](http://www.bb-elec.com/Access)

Carrier data charges  
may apply.



iView: Windows 2000/XP/Vista/Win7

# 10/100/1000 Mbps Optical Ethernet Demarcation Unit

IE-Multiway



## SPECIFICATIONS

### TECHNICAL

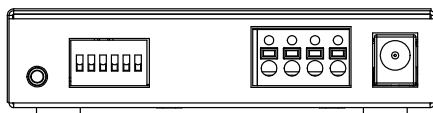
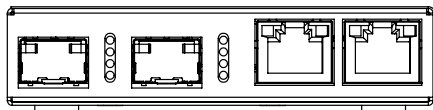
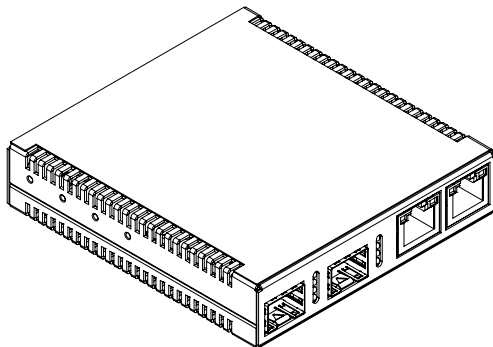
Plug-and-Play Operation  
 2 x RJ-45 and 2 x SFP ports (SFPs sold separately)  
 IEEE 802.3i 10Base-T over twisted pair  
 IEEE 802.3u 100Base-TX over twisted pair  
 IEEE 802.3u 1000Base-T over twisted pair  
 IEEE 802.3u 100Base-FX  
 IEEE 802.3u 1000Base-X  
 Jumbo Frames support (up to 10240 bytes)  
 Auto Negotiation, Auto-Cross for MDI/MDIX  
 Includes diagnostic LEDs  
 1+1 uplink protection (< 50 mSecs)  
 Extended temperature range from -40° to +85° C  
 -48 VDC terminal for Telco applications  
 Compatible with all standard MSA compliant SFP transceivers

### STANDARDS COMPLIANCE

IEEE 802.3ah  
 IEEE 802.1ag  
 Y.1731  
 SFP-MSA SFP standard (September 14, 2000)  
 SFF-8472 DDM standard (Revision 1.0)

## MECHANICAL DIAGRAM

(dimensions in inches & millimeters)



### MECHANICAL

Dimensions 0.86"H x 3.66"W x 3.88"D  
 (2.2 x 9.38 x 9.94 cm)  
 Enclosure Metal  
 Shipping Weight 1.0 lbs (0.45 kg)

### POWER

5 to 24 VDC (Barrel)  
 48 VDC Telco (Terminal)

### POWER INFORMATION

Min: 3.15W (1 optic SFP [1 Gbps], 1 Tx [100 Mbps])  
 Max: 7.0W (2 Cu SFP [1 Gbps], 2 Tx [1 Gbps])

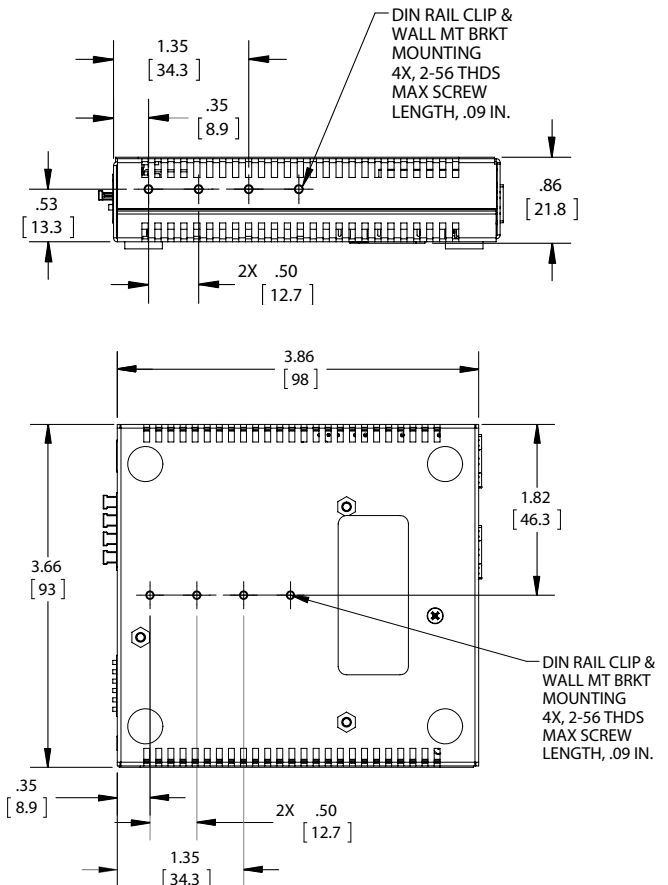
\* Power consumption is based on SFP types

### ENVIRONMENTAL

Operating Temperature w/ Franmar AC Wall Adapter +14° to +122° F (-10° to +50° C)  
 Operating Temperature w/DC Configuration -40° to +185° F (-40° to +85° C)  
 Storage Temperature -49° to +185° F (-45° to +85° C)  
 Operating Humidity 10 to 95% Non-condensing

### REGULATORY APPROVALS

FCC Class A (Using 48V Telco-type power)  
 FCC Class B (Using all other power options)  
 UL/cUL, CE



# AMEYA360

## Components Supply Platform

Authorized Distribution Brand :



Website :

Welcome to visit [www.ameya360.com](http://www.ameya360.com)

Contact Us :

➤ Address :

401 Building No.5, JiuGe Business Center, Lane 2301, Yishan Rd  
Minhang District, Shanghai , China

➤ Sales :

Direct +86 (21) 6401-6692

Email [amall@ameya360.com](mailto:amall@ameya360.com)

QQ 800077892

Skype ameyasales1 ameyasales2

➤ Customer Service :

Email [service@ameya360.com](mailto:service@ameya360.com)

➤ Partnership :

Tel +86 (21) 64016692-8333

Email [mkt@ameya360.com](mailto:mkt@ameya360.com)