

# Customer Information Sheet

DRAWING No.: M80-540XXXX

SHEET 2 OF 2

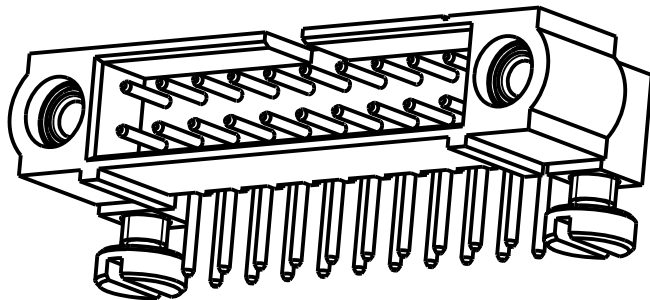
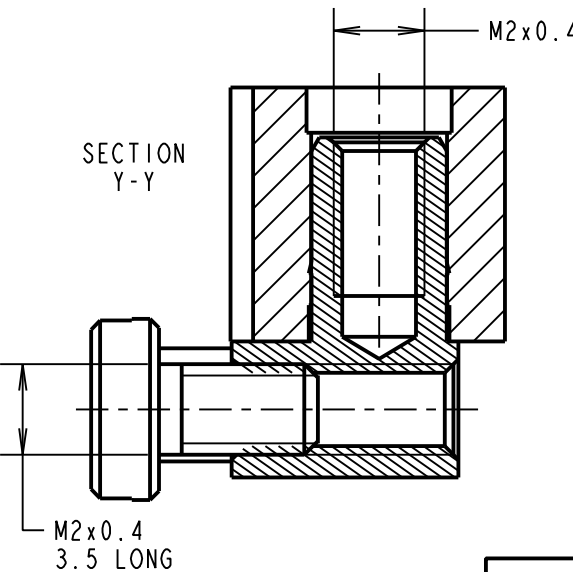
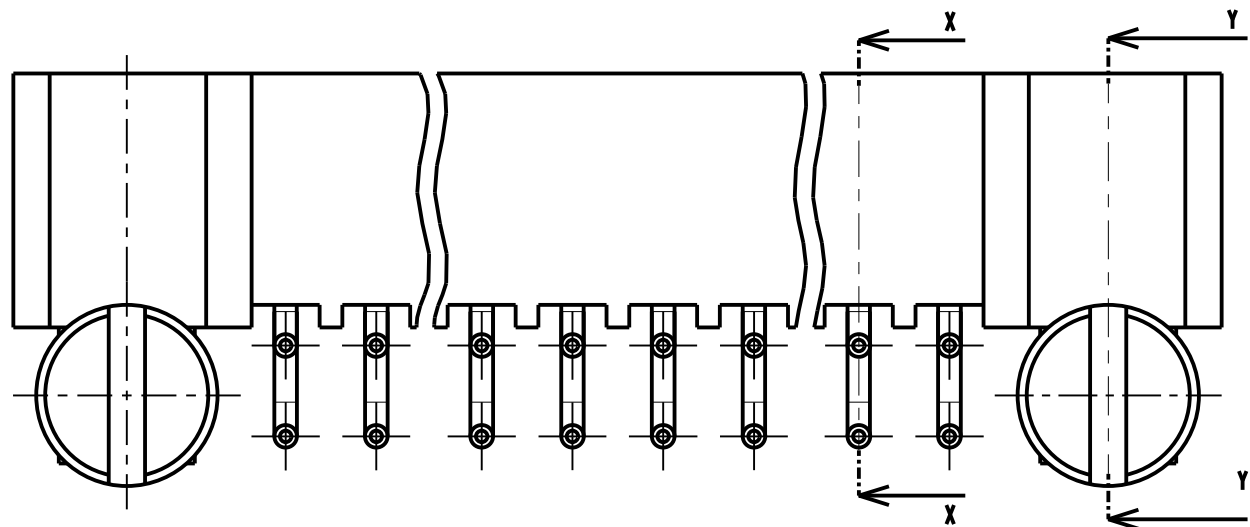
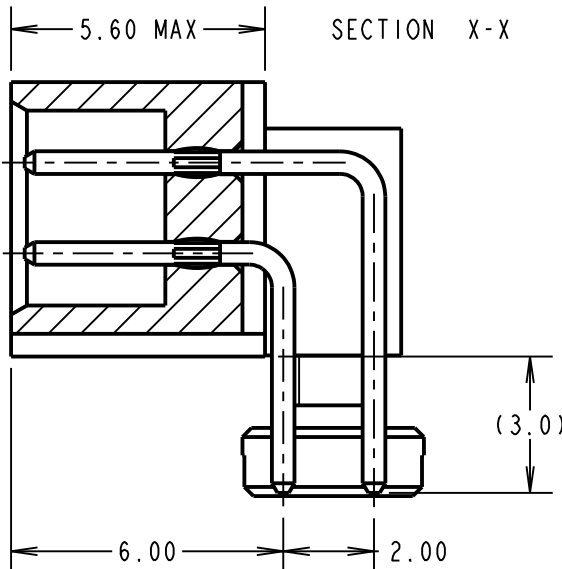
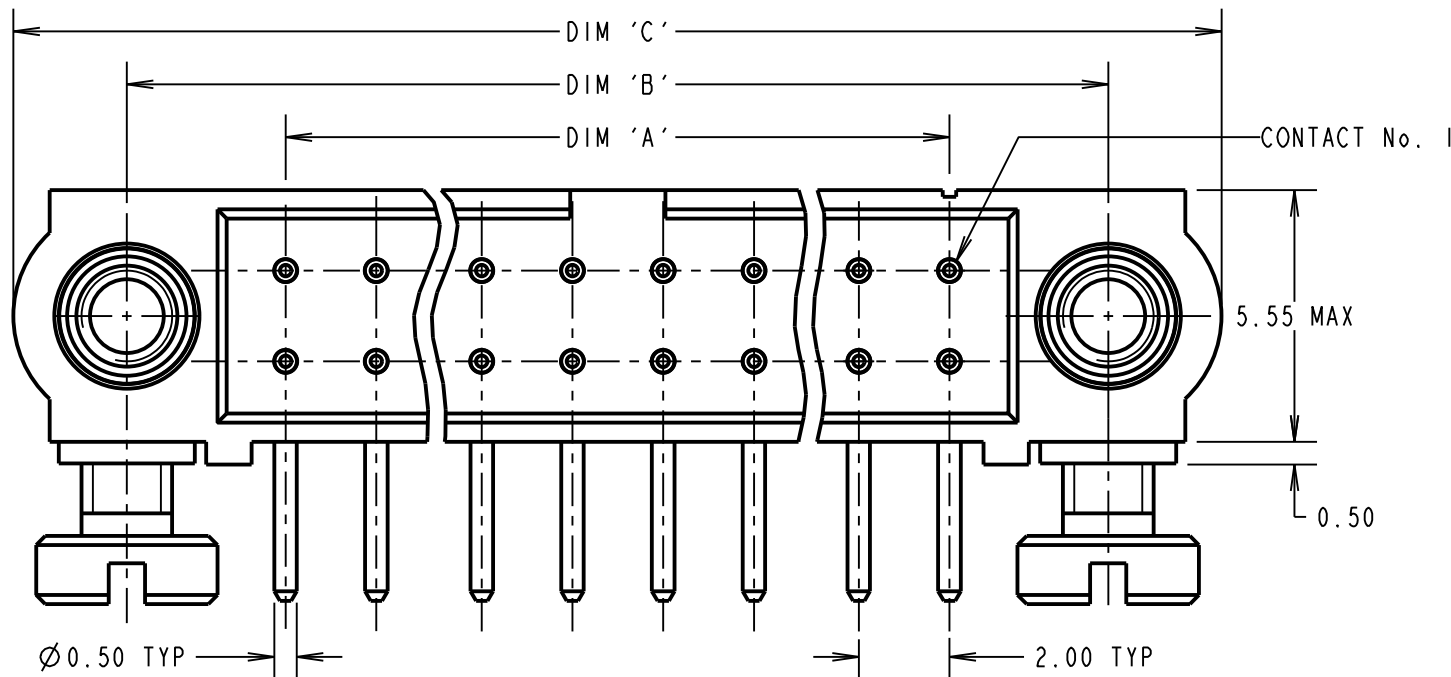
IF IN DOUBT - ASK

(C)

NOT TO SCALE

THIRD ANGLE PROJECTION

ALL DIMENSIONS IN mm



## SPECIFICATIONS:

### MATERIAL:

MOULDING = GLASS-FILLED PPS,

UL94V-0, BLACK

CONTACT = PHOSPHOR BRONZE

JACKSCREW = STAINLESS STEEL

### FINISH (CONTACTS):

22 = 0.75μ GOLD ON CONTACT AREA,

3μ 90/10 TIN/LEAD ON TAILS

42 = 0.75μ GOLD ON CONTACT AREA,

3μ 100% TIN ON TAILS

05 = 0.75μ GOLD ALL OVER NICKEL

### ELECTRICAL:

CURRENT RATING AT 25°C = 3.0A MAX

CURRENT RATING AT 85°C = 2.2A MAX

WORKING VOLTAGE = 800V AC/DC

VOLTAGE PROOF = 1200V AC/DC

CONTACT RESISTANCE = 25 mΩ MAX

INSULATION RESISTANCE = 100 MΩ MIN

### MECHANICAL:

DURABILITY = 500 OPERATIONS

### ENVIRONMENTAL:

TEMPERATURE RANGE = -55°C TO +125°C

### PACKING: TUBE

FOR COMPLETE SPECIFICATION, SEE

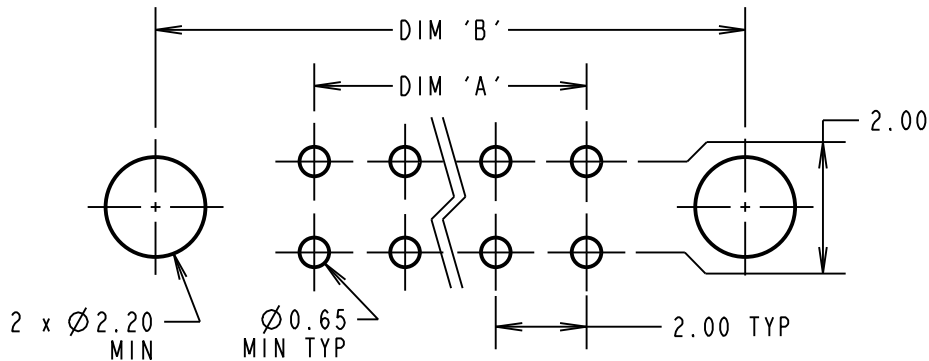
COMPONENT SPECIFICATION C005XX

(LATEST ISSUE)

## NOTES:

1. BOARD MOUNT SCREWS SUPPLIED LOOSE IN A BAG NOT AS SHOWN.

## RECOMMENDED PCB LAYOUT



DIMENSION	CALCULATION
DIM 'A'	TOTAL No. OF CONTACTS - 2
DIM 'B'	TOTAL No. OF CONTACTS + 5
DIM 'C'	TOTAL No. OF CONTACTS + 10

## ORDER CODE:

M80-540XXXX

## TOTAL No. OF CONTACTS

04 TO 50  
(EVEN NUMBERS ONLY)

## FINISH

22 - SELECTIVE GOLD + TIN/LEAD

42 - SELECTIVE GOLD + 100% TIN

05 - 0.75μ GOLD ALL OVER

**HARWIN**

www.harwin.com  
technical@harwin.com

THIS DRAWING AND ANY INFORMATION OR DESCRIPTIVE MATTER SET OUT HEREON ARE CONFIDENTIAL AND COPYRIGHT PROPERTY OF THE HARWIN GROUP AND MUST NOT BE DISCLOSED, LOANED, COPIED OR USED FOR MANUFACTURING, TENDERING OR FOR ANY OTHER PURPOSE WITHOUT THEIR WRITTEN PERMISSION.

## TOLERANCES

X. = ±1mm

X.X = ±0.25mm

X.XX = ±0.10mm

X.XXX = ±0.01mm

ANGLES = ±5°

UNLESS STATED

## MATERIAL:

SEE ABOVE

## FINISH:

SEE ABOVE

## S/AREA:

mm<sup>2</sup>

TITLE: DATAMATE J-TEK DIL  
HORIZ 3.0mm PC TAIL MALE ASSY  
WITH BOARD MOUNT

## DRAWING NUMBER:

M80-540XXXX

SHT

2 OF 2

SF	2	17.04.13	12012
NAME	ISS.	DATE	C/NOTE
APPROVED:	S.FLOWER		
CHECKED:	M.PLESTED		
DRAWN:	W. J. BOURNE		
CUSTOMER REF.:			
ASSEMBLY DRG:			

# AMEYA360

Components Supply Platform

Authorized Distribution Brand :



Website :

Welcome to visit [www.ameya360.com](http://www.ameya360.com)

Contact Us :

➤ Address :

401 Building No.5, JiuGe Business Center, Lane 2301, Yishan Rd  
Minhang District, Shanghai , China

➤ Sales :

Direct +86 (21) 6401-6692

Email [amall@ameya360.com](mailto:amall@ameya360.com)

QQ 800077892

Skype ameyasales1 ameyasales2

➤ Customer Service :

Email [service@ameya360.com](mailto:service@ameya360.com)

➤ Partnership :

Tel +86 (21) 64016692-8333

Email [mkt@ameya360.com](mailto:mkt@ameya360.com)