




## Features

- 1210 size
- Magnetic shielding
- High Q characteristic
- High current rating
- RoHS compliant\*

 Shaded models are currently available, but not recommended for new designs.

## CMH322522 Series - Shielded Wirewound Chip Inductor

### Electrical Specifications

Bourns Part No.	Inductance		Q Min.	Test Freq. MHz L,Q	SRF MHz Min.	DCR Ω Max.	I <sub>rms</sub> mA Max.
	μH	Tol. %					
CMH322522-10NML	0.010	±20	15	100	2500	0.13	450
CMH322522-12NML	0.012	±20	17	100	2300	0.14	450
CMH322522-15NML	0.015	±20	19	100	2100	0.16	450
CMH322522-18NML	0.018	±20	21	100	1900	0.18	450
CMH322522-22NML	0.022	±20	23	100	1700	0.20	450
CMH322522-27NML	0.027	±20	23	100	1500	0.22	450
CMH322522-33NML	0.033	±20	25	100	1400	0.24	450
CMH322522-39NML	0.039	±20	25	100	1300	0.27	450
CMH322522-47NML	0.047	±20	26	100	1200	0.30	450
CMH322522-56NML	0.056	±20	26	100	1100	0.33	450
CMH322522-68NML	0.068	±20	27	100	1000	0.36	450
CMH322522-82NML	0.082	±20	30	100	900	0.40	450
CMH322522-R10ML	0.10	±20	30	100	700	0.44	450
CMH322522-R12ML	0.12	±20	30	25.2	500	0.22	450
CMH322522-R15ML	0.15	±20	30	25.2	450	0.25	450
CMH322522-R18ML	0.18	±20	30	25.2	400	0.25	450
CMH322522-R22ML	0.22	±20	30	25.2	350	0.32	450
CMH322522-R27ML	0.27	±20	30	25.2	320	0.36	450
CMH322522-R33ML	0.33	±20	30	25.2	300	0.40	450
CMH322522-R39ML	0.39	±20	30	25.2	250	0.45	450
CMH322522-R47ML	0.47	±20	30	25.2	220	0.50	450
CMH322522-R56ML	0.56	±20	30	25.2	180	0.55	450
CMH322522-R68ML	0.68	±20	30	25.2	160	0.60	450
CMH322522-R82ML	0.82	±20	30	25.2	140	0.65	450
CMH322522-1R0KL	1.0	±10	30	7.96	120	0.70	400
CMH322522-1R2KL	1.2	±10	30	7.96	100	0.75	390
CMH322522-1R5KL	1.5	±10	30	7.96	85	0.85	370
CMH322522-1R8KL	1.8	±10	30	7.96	80	0.90	350
CMH322522-2R2KL	2.2	±10	30	7.96	75	1.0	320
CMH322522-2R7KL	2.7	±10	30	7.96	70	1.1	290
CMH322522-3R3KL	3.3	±10	30	7.96	55	1.2	260
CMH322522-3R9KL	3.9	±10	30	7.96	50	1.3	250
CMH322522-4R7KL	4.7	±10	30	7.96	45	1.5	220
CMH322522-5R6KL	5.6	±10	30	7.96	40	1.6	200
CMH322522-6R8KL	6.8	±10	30	7.96	35	1.8	180
CMH322522-8R2KL	8.2	±10	30	7.96	30	2.0	170
CMH322522-100KL	10	±10	30	2.52	28	2.1	150
CMH322522-120KL	12	±10	30	2.52	20	2.5	140
CMH322522-150KL	15	±10	30	2.52	20	2.8	130
CMH322522-180KL	18	±10	30	2.52	20	3.3	120
CMH322522-220KL	22	±10	30	2.52	19	3.7	110
CMH322522-270KL	27	±10	30	2.52	18	5.0	80
CMH322522-330KL	33	±10	30	2.52	16	5.6	70
CMH322522-390KL	39	±10	30	2.52	15	6.4	65
CMH322522-470KL	47	±10	30	2.52	13	7.0	60
CMH322522-560KL	56	±10	30	2.52	12	8.0	55
CMH322522-680KL	68	±10	30	2.52	11	9.0	50
CMH322522-820KL	82	±10	30	2.52	10	10	45
CMH322522-101KL	100	±10	20	0.796	9	10	40

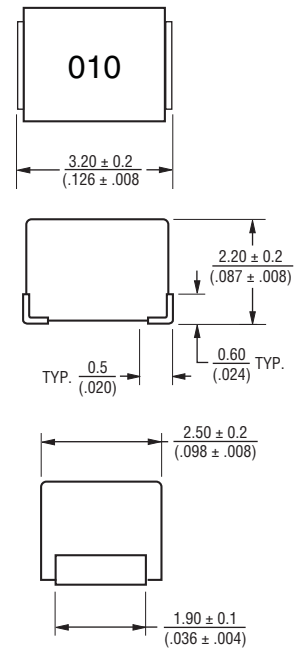
### General Specifications

Temperature Rise .....20 °C max. at rated current  
 Operating Temperature .....-55 °C to +125 °C  
 Storage Temperature .....-55 °C to +125 °C  
 Reflow Soldering .. 230 °C, 50 sec. max.  
 Resistance to Soldering Heat ..... 260 °C, 5 seconds

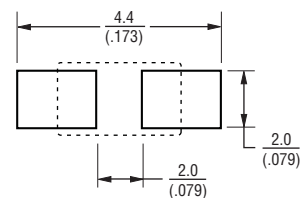
### Materials

Core.....Ferrite  
 Terminal Electrode.....Cu/Sn  
 Packaging.....2,000 pcs. per reel

### Product Dimensions



### Recommended Layout



DIMENSIONS:  $\frac{\text{MM}}{\text{(INCHES)}}$

\*RoHS Directive 2002/95/EC Jan. 27, 2003 including annex and RoHS Recast 2011/65/EU June 8, 2011. Specifications are subject to change without notice.

The device characteristics and parameters in this data sheet can and do vary in different applications and actual device performance may vary over time. Users should verify actual device performance in their specific applications.

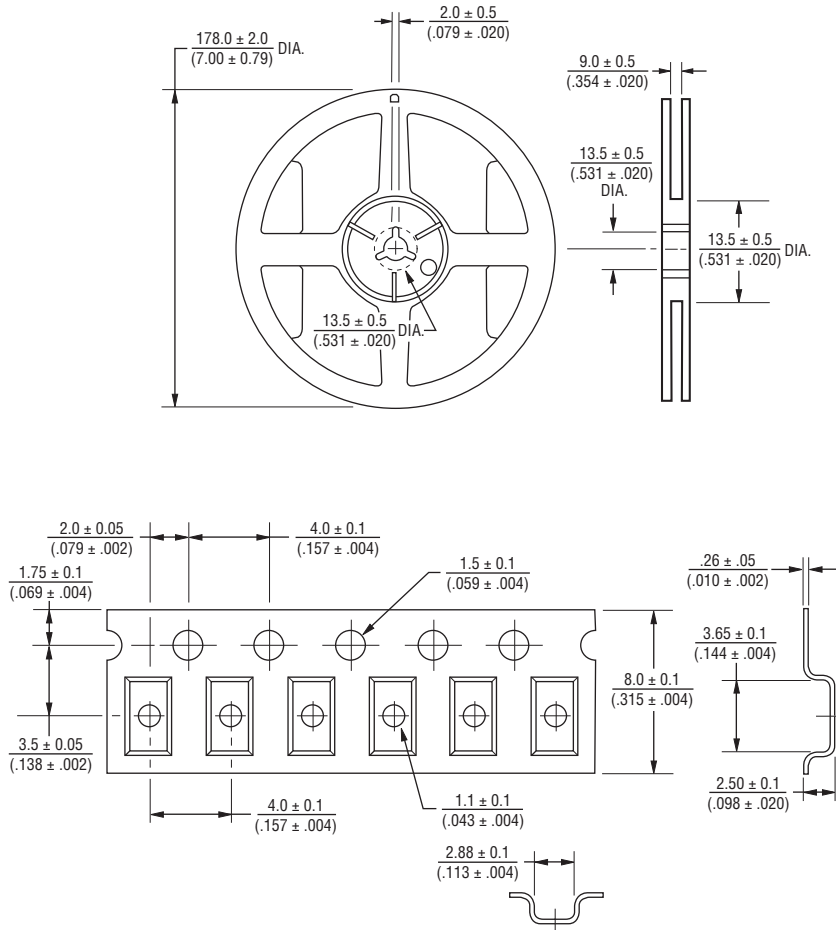
## Applications

- Prevention of electromagnetic interference to signals on the secondary side of electronic equipment

## CMH322522 Series - Shielded Wirewound Chip Inductor

**BOURNS®**

### Packaging Specifications



DIMENSIONS:  $\frac{\text{MM}}{\text{(INCHES)}}$

REV. 05/13

Specifications are subject to change without notice.

The device characteristics and parameters in this data sheet can and do vary in different applications and actual device performance may vary over time. Users should verify actual device performance in their specific applications.

# AMEYA360

## Components Supply Platform

Authorized Distribution Brand :



Website :

Welcome to visit [www.ameya360.com](http://www.ameya360.com)

Contact Us :

➤ Address :

401 Building No.5, JiuGe Business Center, Lane 2301, Yishan Rd  
Minhang District, Shanghai , China

➤ Sales :

Direct +86 (21) 6401-6692

Email [amall@ameya360.com](mailto:amall@ameya360.com)

QQ 800077892

Skype [ameyasales1](#) [ameyasales2](#)

➤ Customer Service :

Email [service@ameya360.com](mailto:service@ameya360.com)

➤ Partnership :

Tel +86 (21) 64016692-8333

Email [mkt@ameya360.com](mailto:mkt@ameya360.com)