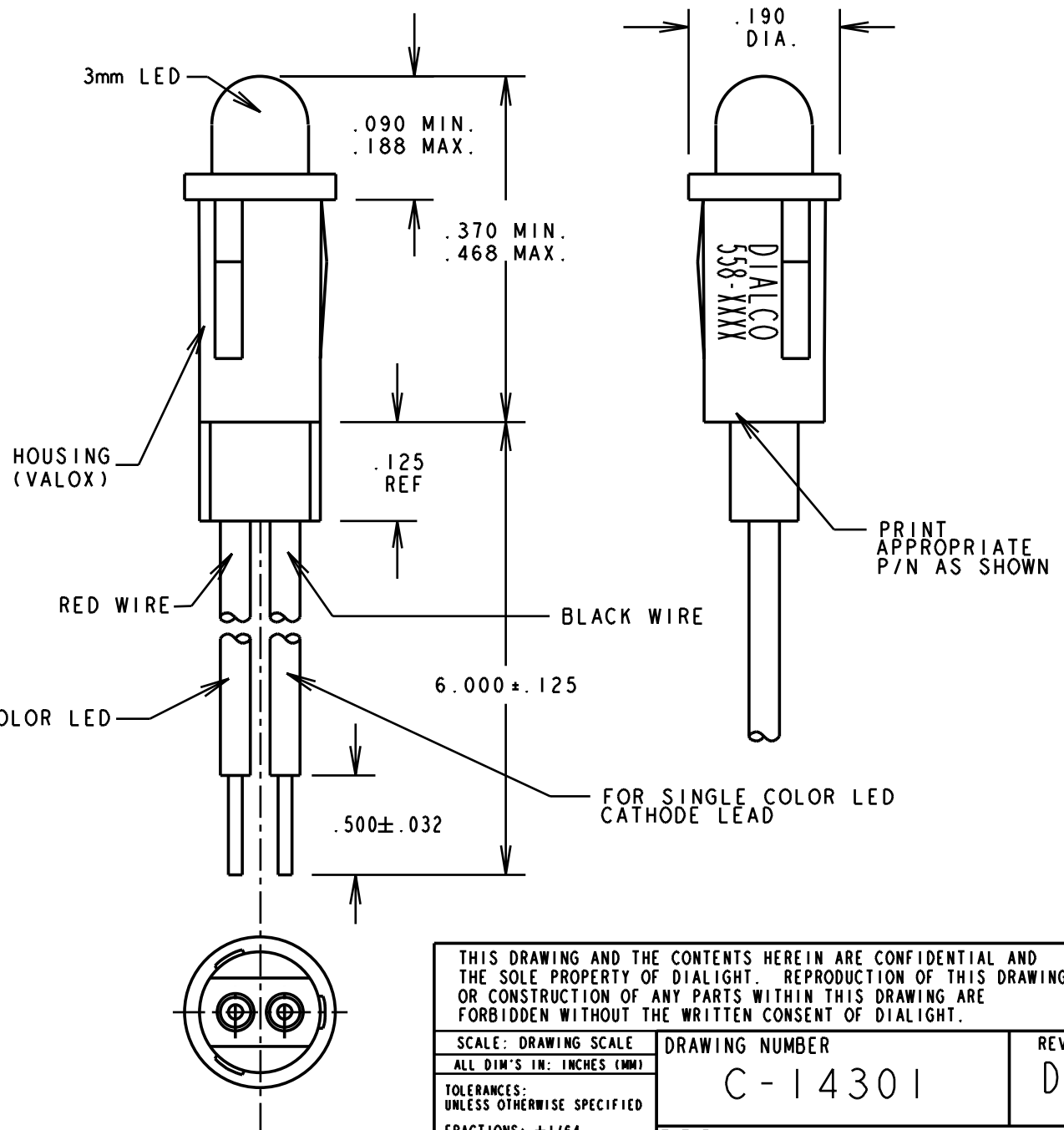


CATALOG NO.	V _f (V)		I _f (mA)		LED EPOXY COLOR	LED CHIP	PEAK WAVE. λ _p (nm)	LUM. INT. I _f (mcd)		REVERSE VOLTAGE V _r MIN. (V)	REVISIONS			
	TYP.	MAX.	TYP.	MAX.				MIN.	TYP.		LTR	DRN.	APP.	DATE
558-0101-003	2.0	3.0	10*	20	RED DIFF.	GaAs	650	3.6	10.0	3	D	TC		
558-0102-003	5.0		10	15	RED DIFF.	GaAsP/GaP	635	1.5	4.0	5	D	TC	N.O.	9-30-97
558-0201-003	2.1	3.0	10*	25	GREEN DIFF.	GaP	563	5.6	16.0	3	D	TC	N.O.	9-30-97
558-0202-003	5.0		12	15	GREEN DIFF.	GaP	565	2.0	8.0	5	D	TC	N.O.	9-30-97
558-0301-003	2.1	3.0	10*	20	YELLOW DIFF.	GaAsP/GaP	585	2.2	6.3	3	D	TC	N.O.	9-30-97
558-0302-003	5.0		10	15	YELLOW DIFF.	GaAsP/GaP	583	2.0	8.0	5	D	TC	N.O.	9-30-97
558-0401-003	1.5	2.2	10*	25	ORANGE DIFF.	GaAsP/GaP	600	3.0	6.5	5	A	TC	N.O.	9-30-97
558-0501-003	2.1	2.8	20*	40	WATER CLEAR	GaP	565	19.0	70.0	4	A	TC	N.O.	9-30-97
558-0601-003	1.9	2.4	20*	50	WATER CLEAR	AlInGaP	594	35.0	200.0	5	A	TC	N.O.	9-30-97
558-0701-003	1.8	2.4	20*	40	WATER CLEAR	AlGaAs	660	60.0	170.0	4	A	TC	N.O.	9-30-97
558-1101-003	1.8	2.2	2**	7	RED DIFF.	GaAsP/GaP	635	1.0	1.8	5	A	TC	N.O.	9-30-97
558-1201-003	1.9	2.7	2**	7	YELLOW DIFF.	GaAsP/GaP	583	1.0	1.6	5	A	TC	N.O.	9-30-97
558-1301-003	1.8	2.2	2**	7	GREEN DIFF.	GaP	565	1.0	1.6	5	A	TC	N.O.	9-30-97
558-1501-003	2.1	2.8	10*	30	GREEN TINTED NON-DIFFUSED	GaP	565	19.0	70.0	5	A	TC	N.O.	9-30-97
558-1601-003	2.1	2.8	10*	20	YELLOW TINTED NON-DIFFUSED	GaAsP/GaP	585	5.6	19.0	5	A	TC	N.O.	9-30-97
558-1701-003	1.8	2.4	20*	40	RED TINTED NON-DIFFUSED	AlGaAs	660	40.0	135.0	4	A	TC	N.O.	9-30-97
558-1801-003	1.8	2.4	20*	40	RED DIFF.	AlGaAs	660	19.0	60.0	4	A	TC	N.O.	9-30-97

REV.	ECN NO.	REVISIONS	DRN.	CKD.	APP.	DATE
D		ADDED ITEMS -0401-003 THRU --1801-003 WITH ELEC. SPECS; UPDATED NOTE 3; NOTE 4 BECAME NOTE 3; .090 MIN WAS .105 MIN .370 MIN WAS .385 MIN; REDRAWN TO CADAM	TC			



NOTES:

- * REQUIRES EXTERNAL RESISTOR.
** REQUIRES EXTERNAL RESISTOR, MAX. FORWARD D.C. CURRENT 7 mA.
- LEAD WIRES: AWG #26 PRE-TINNED, STRANDED.
- RECOMMENDED MOUNTING HOLE: .155 - .158 DIA. ON PANELS .031 THRU .062 THICK.
- RECOMMENDED MOUNTING HOLE: .155 - .158 DIA. ON PANELS .031 THRU .062 THICK.
- DIALIGHT PART NUMBER 558-0101-003

THIS DRAWING AND THE CONTENTS HEREIN ARE CONFIDENTIAL AND THE SOLE PROPERTY OF DIALIGHT. REPRODUCTION OF THIS DRAWING OR CONSTRUCTION OF ANY PARTS WITHIN THIS DRAWING ARE FORBIDDEN WITHOUT THE WRITTEN CONSENT OF DIALIGHT.		
SCALE: DRAWING SCALE ALL DIM'S IN: INCHES (MM)	DRAWING NUMBER C-14301	REV D
TOLERANCES: UNLESS OTHERWISE SPECIFIED FRACTIONS: ±1/64 DECIMALS (.XX): ±.020 DECIMALS (.XXX): ±.015	TITLE	
ANGLES: ±3° FINISH:	MATERIAL	
FSCM 83330	Dialight	1501 ROUTE 34 SOUTH FARMINGDALE, NJ 07727
	SHEET OF	FAMILY TABLE:

AMEYA360

Components Supply Platform

Authorized Distribution Brand :



Website :

Welcome to visit www.ameya360.com

Contact Us :

➤ Address :

401 Building No.5, JiuGe Business Center, Lane 2301, Yishan Rd
Minhang District, Shanghai , China

➤ Sales :

Direct +86 (21) 6401-6692

Email amall@ameya360.com

QQ 800077892

Skype [ameyasales1](#) [ameyasales2](#)

➤ Customer Service :

Email service@ameya360.com

➤ Partnership :

Tel +86 (21) 64016692-8333

Email mkt@ameya360.com