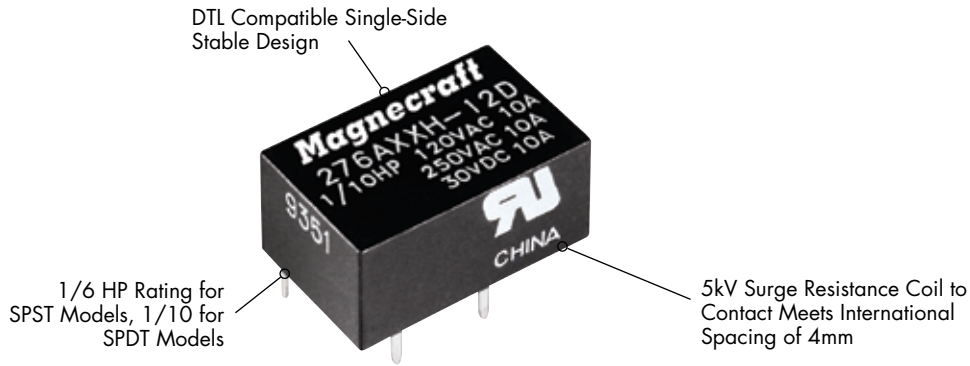
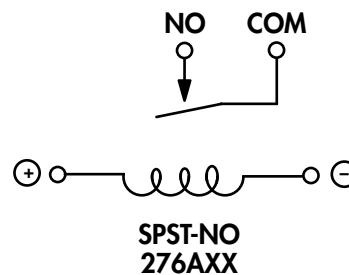
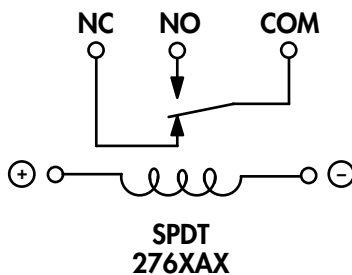


276 Low Profile PCB Mount Power Relay/SPST and SPDT 7 - 10 Amp Rated



General Specifications		(UL 508)		276XAX	276AXX
Contact Characteristics			Units	7 Amp	10 Amp
Number and type of Contacts				SPDT	SPST-NO
Contact materials				Silver Alloy	Silver Alloy
Current rating			A	7	10
Switching voltage			V	240 50/60 Hz	240 50/60 Hz
			V	30	30
			HP	1/10 @ 120VAC	1/6 @ 120VAC
Minimum Switching Requirement	Minimum		mA	100	100
Coil Characteristics					
Voltage Range			V	3...24	3...24
Operating Range				80% to 110%	80% to 110%
Average consumption	% of Nominal		W	0.2	0.2
Drop-out voltage threshold				10%	10%
Performance Characteristics					
Electrical Life	Operations @ Rated Current (Resistive)			100,000	100,000
Mechanical Life	Unpowered			5,000,000	5,000,000
Operating time (response time)			ms	10	10
Dielectric	Between coil and contact		V	2000	2000
	Between contacts		V	1000	1000
Environment					
Product certifications	Standard version			UL	UL
Ambient air temperature around the device	Storage		°C	-40...+85	-40...+85
	Operation		°C	-40...+55	-40...+55
Vibration resistance	Operational		g-n	3, 10-55 Hz	3, 10-55 Hz
Shock resistance			g-n	20	20
Weight			grams	5.5	5.5

WIRING DIAGRAMS TOP VIEW





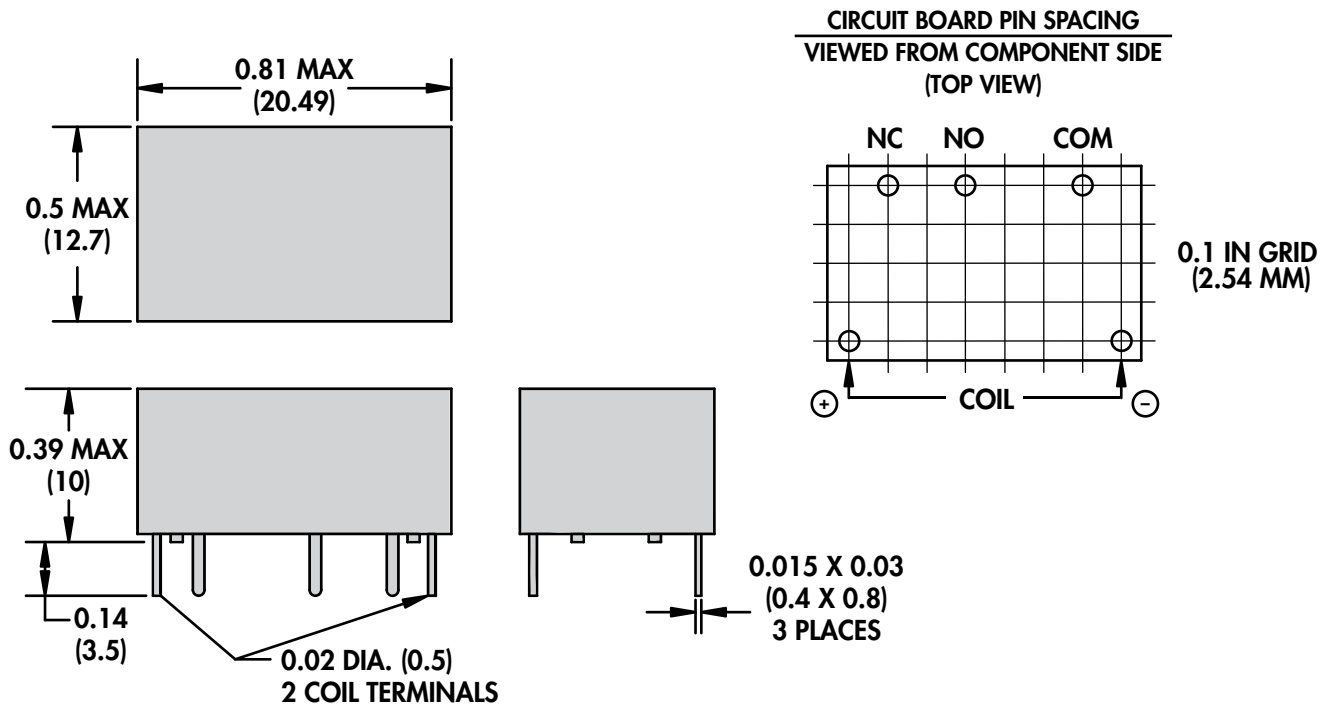
Standard Part Numbers

BOLD-FACED PART NUMBERS ARE NORMALLY STOCKED

Nominal Input Voltage	Nominal Coil Resistance (Ω)	Part Number	Contact Configuration
5 VDC	125 Ω	276AXXH-5D	SPST-NO
6 VDC	180 Ω	276AXXH-6D	SPST-NO
12 VDC	720 Ω	276AXXH-12D	SPST-NO
24 VDC	2880 Ω	276AXXH-24D	SPST-NO
5 VDC	125 Ω	276XAXH-5D	SPDT
6 VDC	180 Ω	276XAXH-6D	SPDT
12 VDC	720 Ω	276XAXH-12D	SPDT
24 VDC	2880 Ω	276XAXH-24D	SPDT

Part Number Builder

Series	Contact Configuration	Type of Seal	Coil Voltage	Current Type
276	XAX	H	-12	D
276	AXX = SPST - NO XAX = SPDT	H = Epoxy Sealed	5 = 5VDC 6 = 6VDC 12 = 12VDC 24 = 24VDC	D = DC Coil



DRAWING AND PIN SPACING ENLARGED TO 200% OF ACTUAL SIZE

AMEYA360

Components Supply Platform

Authorized Distribution Brand :



Website :

Welcome to visit www.ameya360.com

Contact Us :

➤ Address :

401 Building No.5, JiuGe Business Center, Lane 2301, Yishan Rd
Minhang District, Shanghai , China

➤ Sales :

Direct +86 (21) 6401-6692

Email amall@ameya360.com

QQ 800077892

Skype [ameyasales1](#) [ameyasales2](#)

➤ Customer Service :

Email service@ameya360.com

➤ Partnership :

Tel +86 (21) 64016692-8333

Email mkt@ameya360.com