

## Ordering Table — Standard Rocker & Paddle Switches

### HOW TO ORDER YOUR DESIGN (Bold Face Type indicates items normally in Distributor Stock)

Following the table from left to right, the designer is able to specify the options wanted. The options are described and illustrated on pages 24-31. Refer to page 57 for mounting hardware.

To determine a part number select the options desired and fill in the boxes in the selection guides illustrated below.

#### Rocker Switch Selection Guide

Rocker Switch Series	Poles and Throw	Circuit	Actuator	Terminal Type	Contact Material	Actuator Color	Bezels	Other
<input type="text"/>	<input type="text"/>	<input type="text"/>	<input type="text"/>	<input type="text"/>	<input type="text"/>	<input type="text"/>	<input type="text"/>	<input type="text"/>

Series	Poles and Throw	Circuits <sup>11</sup>	Actuator Options	Terminal Options <sup>6</sup>	Contact Material	Actuator Color	Bezels	Other Option
No.	Code	Description	Type	Type	Type	Color	Type	Type
B	SPDT	1	POS. "C"	Right Angle PC <sup>10</sup>	A	Dark Gray <sup>4</sup>	Bright Chrome <sup>8</sup>	Epoxy Sealed Terminals <sup>6</sup>
	DPDT	2	ON OFF ON	Vertical PC .100 Spacing	AV1	White	Black <sup>8</sup>	
	3PDT	3	ON NONE ON	Vertical PC .150 Spacing	AV2	Black	Satin Chrome <sup>8</sup>	
	4PDT	4	ON NONE ON*	PC Terminals	C	Red	White <sup>2</sup>	
			ON* OFF ON*	PC & Support <sup>1</sup>	V3	Green <sup>4</sup>	Black <sup>2</sup>	
			ON OFF ON*	PC & Support <sup>1</sup>	V4	Blue <sup>4</sup>	Red <sup>2</sup>	
			ON ON ON	Vertical PC .150 Spacing	V5	Light Gray <sup>4</sup>	Black w/LED <sup>2</sup>	
			ON ON ON*	PC & Support <sup>1</sup>	V6	Yellow <sup>4</sup>	Green <sup>2 4</sup>	
			NONE ON ON*	PC & Support <sup>1</sup>	V7	Brown <sup>4</sup>	Blue <sup>2 4</sup>	
			ON* ON ON*	PC & Support <sup>1</sup>	V7		Light Gray <sup>2 4</sup>	
			NONE ON ON	.750 Wire Wrap	W		Yellow <sup>2 4</sup>	
				.964 Wire Wrap	W1		Dark Gray <sup>2 4</sup>	
				.425 Wire Wrap	W3			
				1.062 Wire Wrap	W4			
			Rocker Actuator <sup>9</sup>	Solder Lugs	Z			
			Paddle Actuator <sup>9</sup>	Quick Connect	Z3			
			Rocker Actuator <sup>9</sup>					
			Paddle Actuator <sup>9</sup>					
			Rocker Actuator <sup>9</sup>					
			Paddle Actuator <sup>9</sup>					
			Rocker Actuator <sup>9</sup>					
			Paddle Actuator <sup>9</sup>					

\*Momentary Contact

<sup>1</sup> 1 and 2 pole only.

<sup>2</sup> For J50 and J60 only.

<sup>3</sup> For J11, J21, J37 and J47 only.

<sup>4</sup> Consult plant for availability.

<sup>5</sup> These circuits are **NOT** available with the following 3 and 4 pole options: A, AV1, AV2, V3, V4, V5, V6 and V7.

<sup>6</sup> Epoxy seal standard on all terminal options.

<sup>7</sup> Available with C, Z, Z3 or W-W4 terminations.

<sup>8</sup> Available with AV1, AV2, V3-V7 terminations.

<sup>9</sup> Available with A, AV1, AV2 or V3-V7 terminations.

<sup>10</sup> 1, 2 and 3 pole only.

<sup>11</sup> See page 58 for construction detail, wiring and electrical diagrams.

<sup>12</sup> Same as B, G and Q respectively except terminals brass with tin nickel alloy over nickel plate. Consult plant for availability.

#### EXAMPLES:

**B121J71AQ2** = SPDT rocker switch with an ON-OFF-ON circuit, J71 style rocker (black), right angle P.C. terminals with coin silver contacts and epoxy sealed terminals.

**B223J50ZQ22P** = DPDT rocker switch with an ON-NONE-ON circuit, J50 style rocker (black), solder lug terminals with coin silver contacts, black snap in bezel and epoxy sealed terminals.

**Standard Rocker & Paddle Switches — Specifications and Materials**

**SPECIFICATIONS**

**Contact Rating** — Letter codes G and Q — 6 amp at 125 VAC, 3 amp @ 250 VAC, (U.L. recognized, CSA certified) or 6 amp at 28 VDC resistive.

Letter codes B and G — 0.5. volt-amp (VA) maximum @ 28 V maximum (AC or DC).

**Life Under Load** — 60,000 make-and-break cycles — resistive load only.

**Initial Contact Resistance** — 10 milliohms maximum. 3 VDC, 100 ma for both silver and gold plated contacts.

**Insulation Resistance** — 1 & 2 pole — 1,000 megohms minimum.  
3 & 4 pole — 1,000 megohms minimum.

**Dielectric Strength** — 1,000 volts rms at sea level.

**Operating Temperature** — 30° to +85°C

**MATERIALS**

**Base (body)** — 1- and 2-pole — Diallyl Phthalate. (DAP).  
3- and 4-pole — high strength phenolic.

**Rocker/Paddle** — Molded nylon.

**Bushing** — Brass, nickel plated.

**Clamp (frame)** — Stainless steel.

**Support Bracket** — Steel, tin plated.

**Metal Bezel** — Spring steel.

**Plastic Bezel** — Molded nylon.

**Switching Contacts and Rockers —**

Letter Code B — gold/nickel/brass

Letter Code G — gold/nickel/silver

Letter Code Q — Coin silver

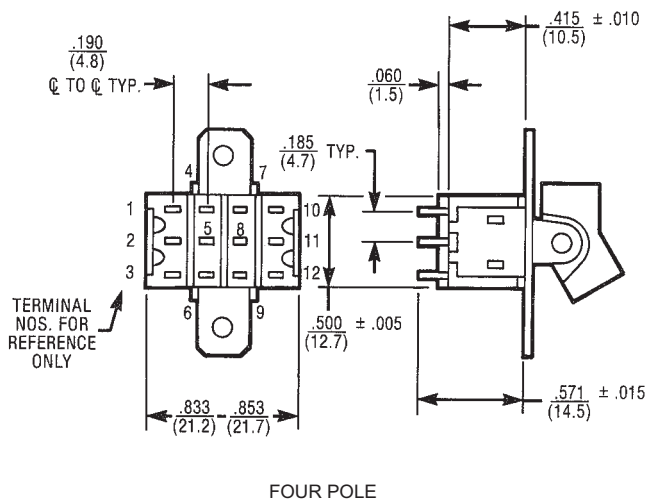
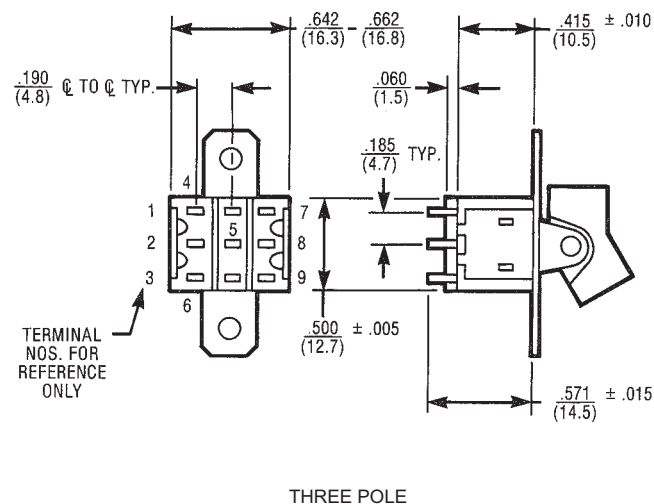
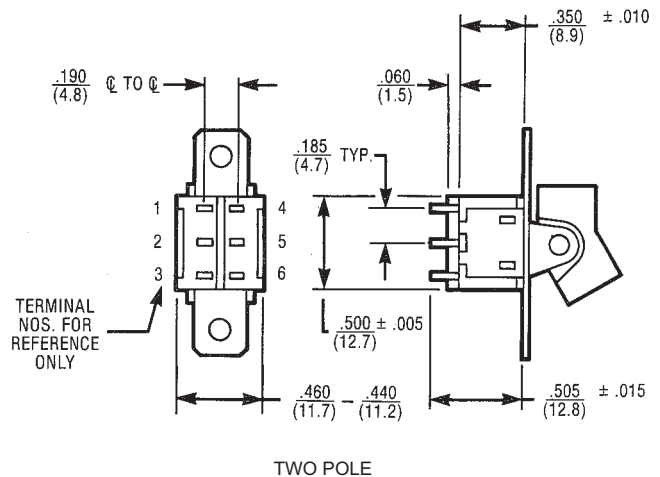
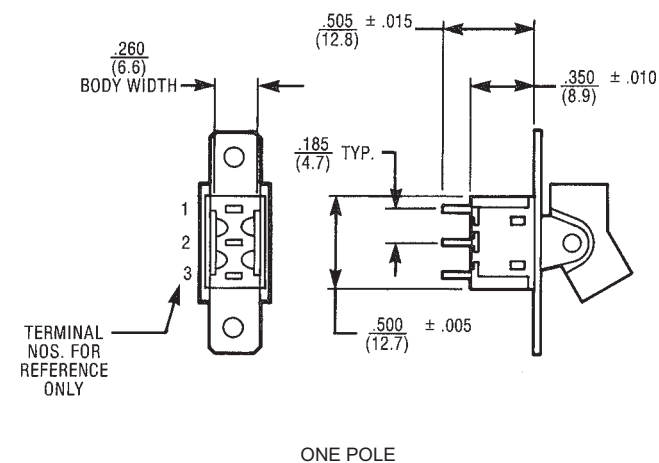
**Center Terminal**

Letter Codes B, G — Gold flash/nickel/brass

Letter Code Q — Silver plated brass.

**Hardware** — See page 57.

**APPROXIMATE BASE DIMENSIONS**



**Rocker Actuator Options For P.C. Mounting**

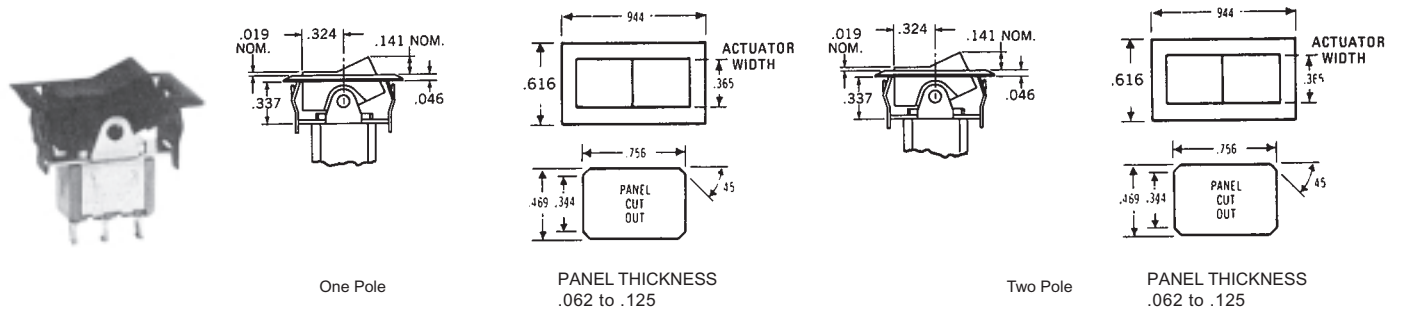
<p><b>J71</b></p>	<p><b>J72</b></p>
<p><b>J73</b></p>	<p><b>J75</b></p>
<p><b>J76</b></p>	<p><b>J77</b></p>

**ACTUATOR/MOUNTING OPTIONS**

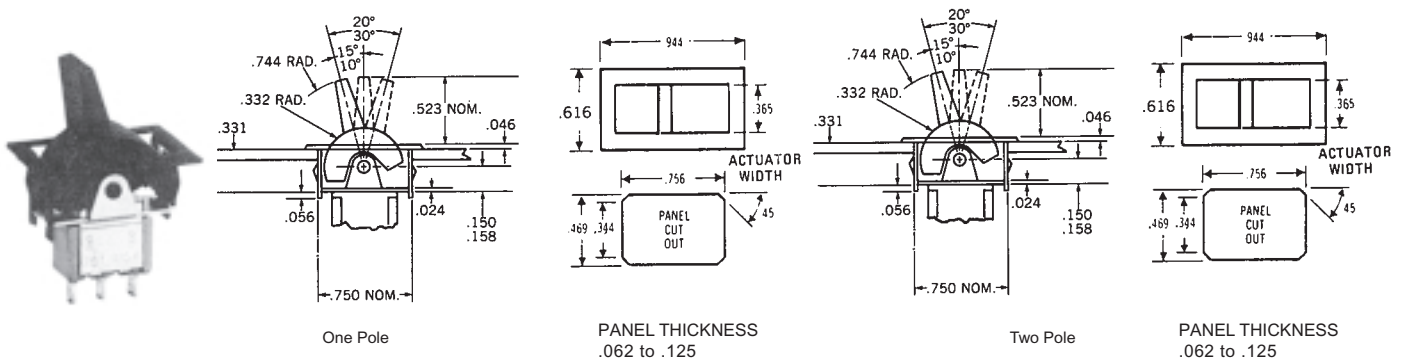
<p><b>J1</b> Screw Mount Rocker</p> <p>Refer to Page 57 for Mounting Hardware</p>	<p><b>J2</b> Screw Mount Paddle Rocker</p> <p>Refer to Page 57 for Mounting Hardware</p>
<p><b>J3</b> Screw Mount Large Rocker</p> <p>Refer to Page 57 for Mounting Information</p>	<p><b>J5</b> Screw Mount Large Tapered Paddle Rocker</p> <p>Refer to Page 57 for Mounting Hardware</p>

**Actuator and Mounting Options — Cont'd**

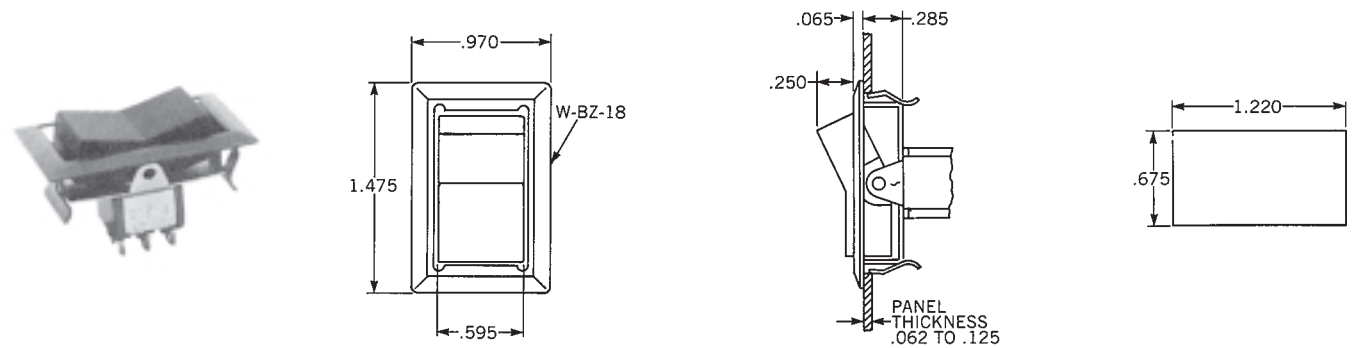
**J11 Rocker with Snap-In Bezel ❶**



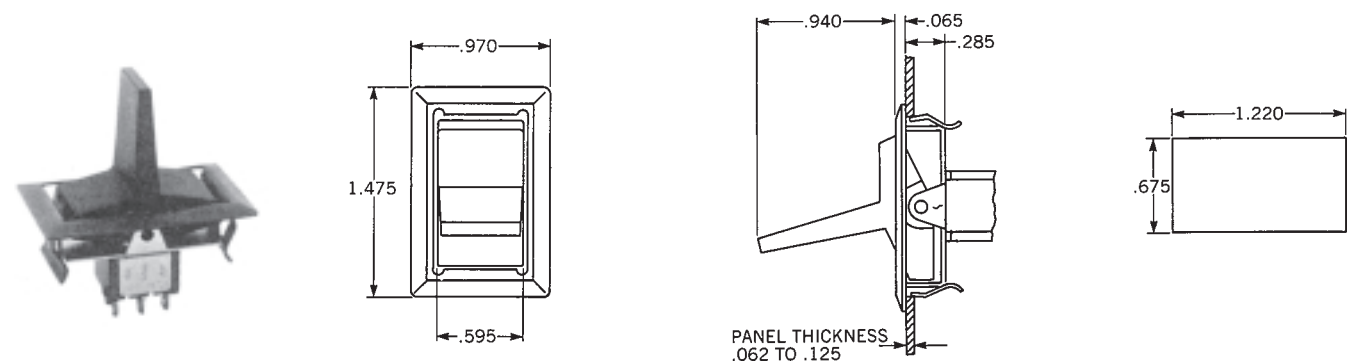
**J21 Paddle with Snap-In Bezel ❶**



**J37 Rocker Actuator/Mounting Option**



**J47 Paddle Actuator/Mounting Option**



❶ Three and four pole switches require assembly from back of panel.

## Actuator and Mounting Options

**J50** = Snap in Mounting w/Low Profile Rocker ①  
**J60** = Snap in Mounting w/Low Profile Paddle

**J50 Rocker Style** **J60 Paddle Style**

**J53** = Snap in Mounting w/High Profile Rocker ①  
**J63** = Snap in Mounting w/High Profile Paddle

**J53 Rocker Style** **J63 Paddle Style**

### OPTIONAL BEZELS (For use with J50/J60 Series only)

**Bezel Assembled with J50/J60 Series**

**J50 Rocker Style w/Bezel** **J60 Paddle Style w/Bezel**

Color	Code	Part No.
White	1P	W-BZ-12A
Black	2P	W-BZ-12
Red	3P	W-BZ-12B

**Bezel for L.E.D. Assembled with J50/J60 Series (Note: LED is not supplied)**

**J50 Rocker Style w/Bezel for L.E.D.** **J60 Paddle Style w/Bezel for L.E.D.**

Color	Code	Part No.
Black	4P	W-BZ-15

### OPTIONAL MOUNTING CLIP (For use with J50/J60 Series only)

**Clip Assembled with J50/J60 Series**

**Clip Assembled with J50/J60 Series**

- For thick plastic panel mount applications (.094" - .125" thick)
- Consult factory for availability

① All rocker switches on this page are snap-in from the front of the panel. No behind panel assembly hardware is needed.

C Printed Circuit	W Wire-Wrap	W1 Wire-Wrap	W3 Wire-Wrap	W4 Wire-Wrap	Z Standard	Z3 Quick Connect
NOTE: Wire-Wrap is a registered trademark of the Gardner-Denver Company.						

Mating Receptacle from  
AMP SPECIAL IND., P.O.  
Box 984, Paoli, Pa. 19301  
Amp P/N single piece 61454  
series, strip from 60900

**TERMINATION/MOUNTING OPTIONS**

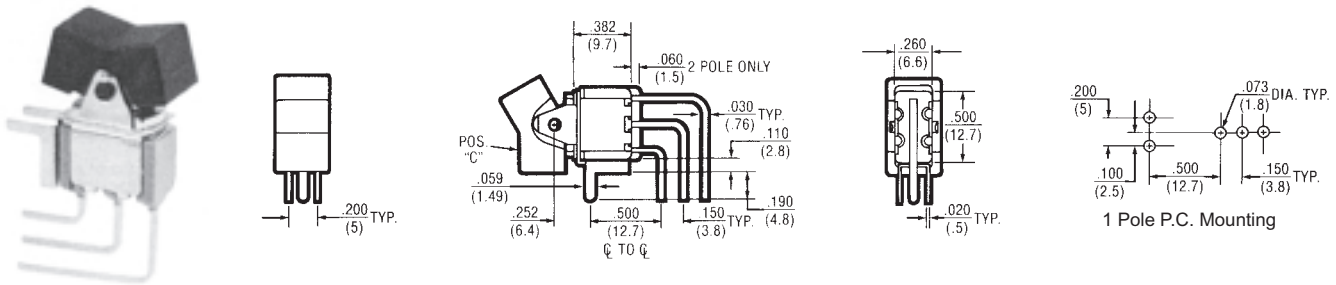
A	ONE POLE	EPOXY SEALED P.C. TERMINALS ARE SUPPLIED AS STANDARD FOR THESE OPTIONS
A	TWO POLE	EPOXY SEALED P.C. TERMINALS ARE SUPPLIED AS STANDARD FOR THESE OPTIONS
A	THREE POLE	EPOXY SEALED P.C. TERMINALS ARE SUPPLIED AS STANDARD FOR THESE OPTIONS
V5	ONE POLE	EPOXY SEALED P.C. TERMINALS ARE SUPPLIED AS STANDARD FOR THESE OPTIONS
V5	TWO POLE	EPOXY SEALED P.C. TERMINALS ARE SUPPLIED AS STANDARD FOR THESE OPTIONS

① The V5 option is available in Three and Four Pole Circuits.



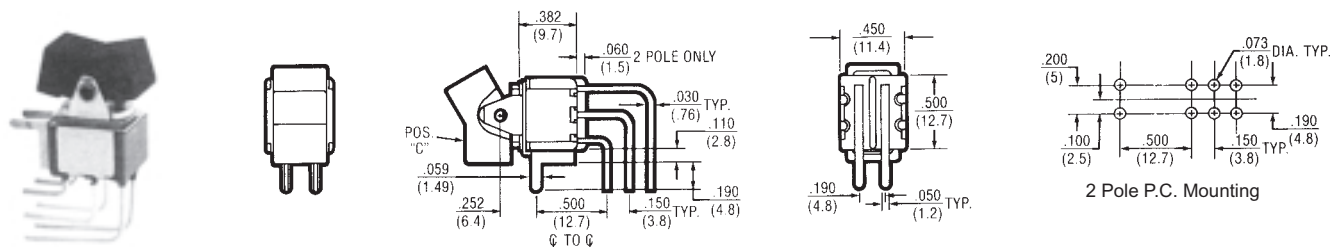
## Termination/Mounting Options

**AV1** w/.100" Terminal Spacing  
**AV2** w/.150" Terminal Spacing (Pictured Below)



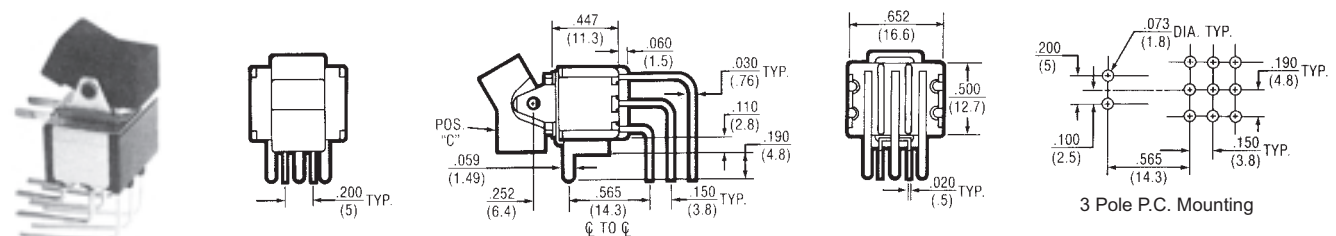
**EPOXY SEALED P.C. TERMINALS ARE SUPPLIED AS STANDARD FOR THESE OPTIONS**

**AV1** w/.100" Terminal Spacing  
**AV2** w/.150" Terminal Spacing (Pictured Below)



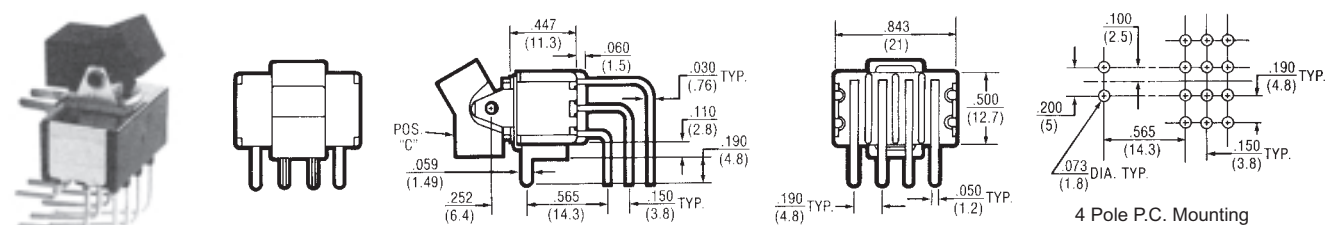
**EPOXY SEALED P.C. TERMINALS ARE SUPPLIED AS STANDARD FOR THESE OPTIONS**

**AV1** w/.100" Terminal Spacing  
**AV2** w/.150" Terminal Spacing (Pictured Below)



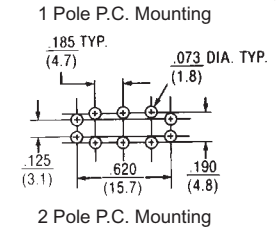
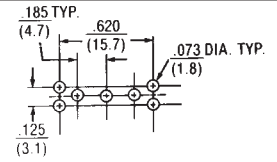
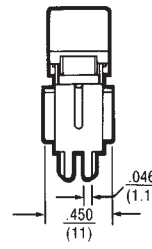
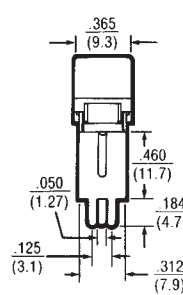
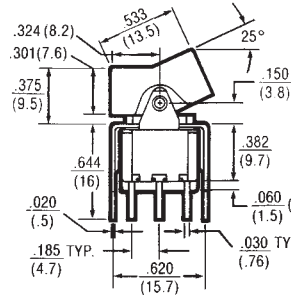
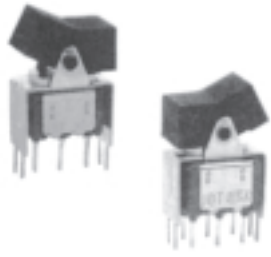
**EPOXY SEALED P.C. TERMINALS ARE SUPPLIED AS STANDARD FOR THESE OPTIONS**

**AV1** w/.100" Terminal Spacing  
**AV2** w/.150" Terminal Spacing (Pictured Below)



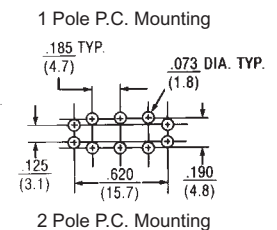
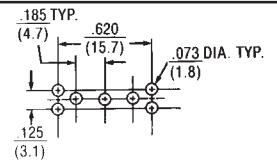
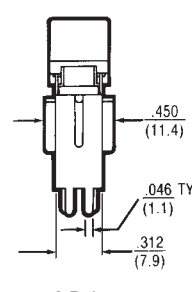
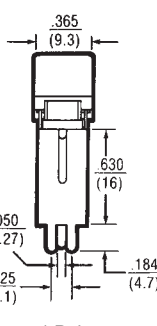
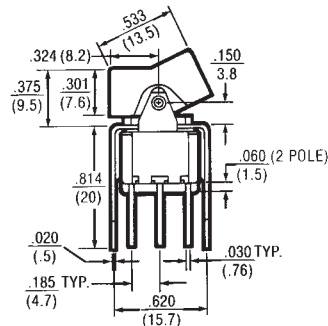
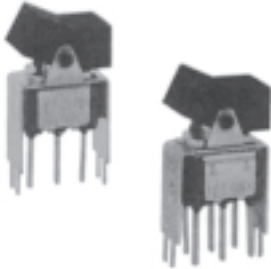
**EPOXY SEALED P.C. TERMINALS ARE SUPPLIED AS STANDARD FOR THESE OPTIONS**

**V3**



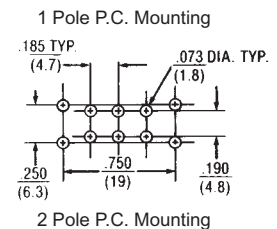
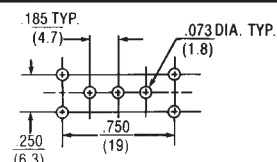
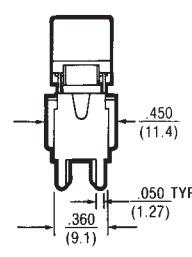
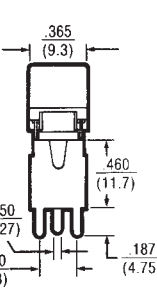
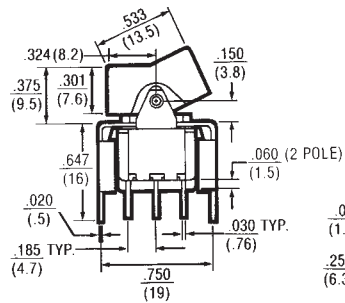
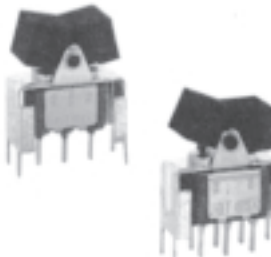
**EPOXY SEALED P.C. TERMINALS ARE SUPPLIED AS STANDARD FOR THESE OPTIONS**

**V4**



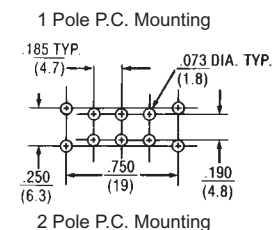
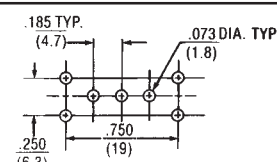
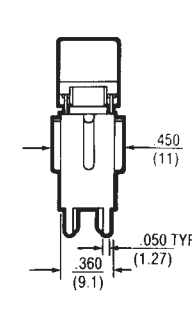
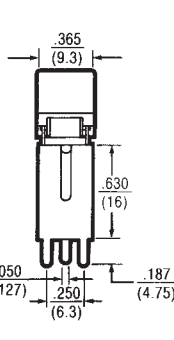
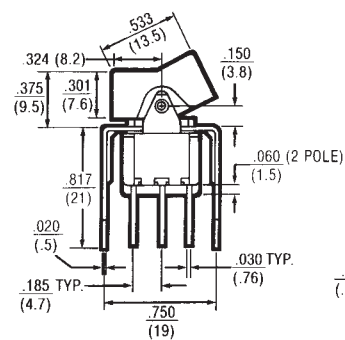
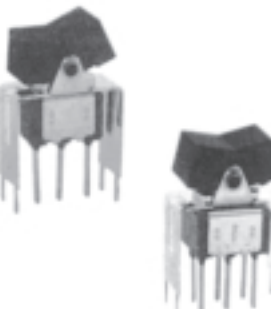
**EPOXY SEALED P.C. TERMINALS ARE SUPPLIED AS STANDARD FOR THESE OPTIONS**

**V6**



**EPOXY SEALED P.C. TERMINALS ARE SUPPLIED AS STANDARD FOR THESE OPTIONS**

**V7**



**EPOXY SEALED P.C. TERMINALS ARE SUPPLIED AS STANDARD FOR THESE OPTIONS**



# AMEYA360

Components Supply Platform

Authorized Distribution Brand :



Website :

Welcome to visit [www.ameya360.com](http://www.ameya360.com)

Contact Us :

➤ Address :

401 Building No.5, JiuGe Business Center, Lane 2301, Yishan Rd  
Minhang District, Shanghai , China

➤ Sales :

Direct     +86 (21) 6401-6692  
Email      amall@ameya360.com  
QQ         800077892  
Skype      ameyasales1 ameyasales2

➤ Customer Service :

Email      service@ameya360.com

➤ Partnership :

Tel         +86 (21) 64016692-8333  
Email      mkt@ameya360.com