

Combo Tester X3 Installation, Operation and Maintenance



Made in the
United States of America



Figure 1. Desco Combo Tester X3 and Dual Foot Plate

Description

The Desco Combo Tester X3 verifies the functionality of an operator's wrist strap and footwear. It determines if an operator's wrist strap and footwear will act as a path-to-ground and ensures the presence of a current-limiting resistor in the grounding devices. The operator's wrist strap and footwear will test simultaneously with no need for separate tests. Green lights indicate that the wrist strap and footwear are passing. Red lights and an audible alarm indicate when the wrist strap and/or footwear (left or right) are failing. If failure occurs, the tester will also display if the grounding device's resistance is too low or too high.

The factory test ranges are set to:

Wrist Straps: 750 kilohms - 10 megohms
Footwear: 750 kilohms - 35 megohms

Each Combo Tester X3 is calibrated with accepted procedures and standards traceable to the National Institute of Standards and Technology (NIST) and includes a NIST certificate.

Per ANSI/ESD S20.20 section 7.3 "A Compliance Verification Plan shall be established to ensure the Organization's fulfillment of the technical requirements of the ESD Control Program Plan. Process monitoring (measurements) shall be conducted in accordance with a Compliance Verification Plan that identifies the technical requirements to be verified, the measurement limits and the frequency at which those verifications shall occur. The Compliance Verification Plan shall document the test methods and equipment used for process monitoring and measurements. ... The test equipment selected shall be capable of making the measurements defined in the Compliance Verification Plan."

Per ANSI/ESD S1.1 section 6.1.3 Frequency of Functional Testing. "The wrist strap system should be tested daily to ensure proper electrical value."

Per ESD Handbook ESD TR20.20 section 5.3.2.4.2 Additional User Wrist Strap Testing "Proper testing of the wrist strap includes the resistance of the groundable point on the end of the cord, the cord itself, the resistor, the cord-to cuff snap connector, the resistance of the interface of the cuff, the cuff/wrist interface, and the resistance of the person between the wrist and the hand that contacts the test electrode."

Per ESD Handbook ESD TR20.20 section 5.3.2.2.2 Wrist Strap Ground Cord "At first glance, the ground cord appears to be a relatively simple assembly. However, the design requirements are considerable, given the wide range of user applications and the durability requirements of constant tugging, flexing, and dragging over the edge of workstation tops and equipment chassis."

"Compliance verification should be performed prior to each use (daily, shift change, etc.). The accumulation of insulative materials may increase the foot grounder system resistance. If foot grounders are worn outside the ESD protected area testing for functionality before reentry to the ESD protected area should be considered." (ESD SP9.2 APPENDIX B - Foot Grounder Usage Guidance)

"Compliance verification records shall be established and maintained to provide evidence of conformity to the technical requirements." [ANSI/ESD S20.20-2007 section 7.3]

The Combo Tester X3 is available in two models:

| Item | Stand Included | Power Adapter |
|-----------------------|----------------|---------------|
| 19276 | No | North America |
| 19277 | Yes | North America |

Packaging

19276 COMBO TESTER X3

- 1 Combo Tester X3
- 1 Dual Foot Plate
- 1 Power Adapter, 12VDC, N. America
- 1 Foot Plate Cord, 6'
- 1 Ground Cord
- 1 Certificate of Calibration

19277 COMBO TESTER X3 WITH STAND

- 1 Combo Tester X3
- 1 Dual Foot Plate
- 1 Power Adapter, 12VDC, N. America
- 1 Foot Plate Cord, 6'
- 1 Ground Cord
- 1 [19255](#) Test Stand
- 2 Socket Head Screws, 1/4-20 x 3/4"
- 2 Pan Head Screws, 10-32 x 5/8"
- 2 Nuts, 10-32
- 4 Pan Head Screws, #4 x 3/4"
- 1 Certificate of Calibration

Features and Components

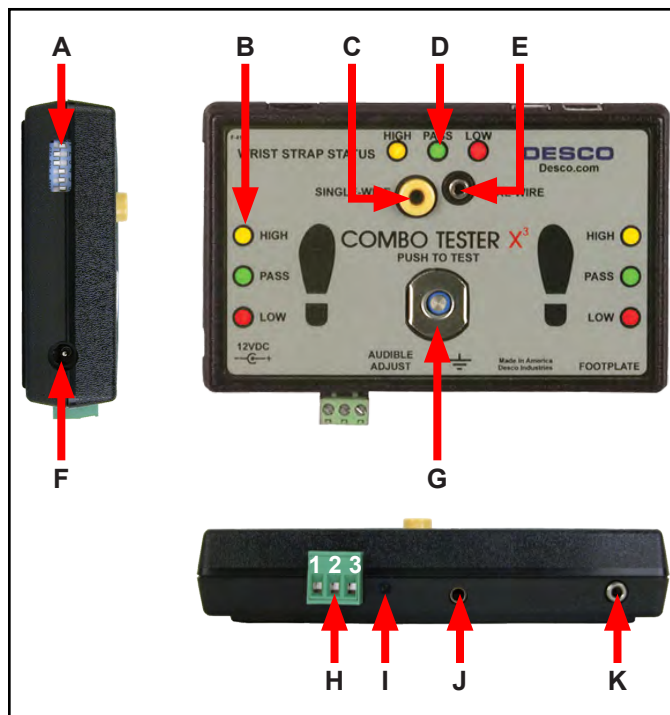


Figure 2. Desco Combo Tester X3 features and components

A. Test Limit DIP Switch: Use this DIP switch to configure the resistance limits of the tester. See the section titled "Tester Configuration" for more information.

B. Footwear Status LEDs: Displays the footwear test results.

C. Single-Wire Wrist Strap Jack: Insert your single-wire wrist cord here to test your wrist strap.

D. Wrist Strap Status LEDs: Displays the wrist strap test results.

E. Dual-Wire Wrist Strap Jack: Insert your dual-wire wrist cord here to test your wrist strap.

F. 12VDC Power Jack: Connect the included power adapter here to power the Combo Tester X3.

G. Steady-State Test Switch: Place and hold your finger here to begin the test.

H. Relay Terminal: Can be integrated with electronic door locks, lights, buzzers, etc. It is capable of switching up to 1A @ 30VDC or .5A @ 125VAC.

Terminals 1 & 2 = Normally Closed

Terminals 2 & 3 = Normally Open

NOTE: All tests must pass in order for the relay to activate.

I. Buzzer Volume Adjustment: Turn the trimpot clockwise to increase the buzzer volume and counter-clockwise to decrease the volume.

J. Ground Jack: Insert the banana plug end of the included ground cord to this jack. Connect the ring terminal end of the cord to equipment ground. This connection will remove any static charge from the user before the test.
NOTE: Failure to correctly ground the Combo Tester X3 may result in damage not covered under warranty.

K. Foot Plate Jack: Connect one end of the foot plate cable cord and the other end to the dual foot plate.

Installation

TESTER CONFIGURATION

The resistance limits for footwear and wrist strap tests are controlled by the DIP switches located on the left side of the Combo Tester X3. Use the following tables for the DIP switch settings and their corresponding test values.

Footwear Resistance

DIP switches 1 and 2 control the HIGH test limit.

| Switch 1 | Switch 2 | HIGH Limit Resistance |
|----------|----------|----------------------------------|
| ON | ON | 10 Megohms (1×10^7) |
| OFF | OFF | 35 Megohms (3.5×10^7) |
| ON | OFF | 100 Megohms (1×10^8) |
| OFF | ON | 1 Gigohm (1×10^9) |

DIP switches 3 and 4 control the LOW test limit.

| Switch 3 | Switch 4 | LOW Limit Resistance |
|----------|----------|-----------------------------------|
| ON | OFF | 100 Kilohms (1×10^5) |
| OFF | ON | 750 Kilohms (7.5×10^5) |

default setting

NOTE: At 1 Gigohm high limit resistance, a dirty foot plate could result in a false pass. Be sure to keep the foot plate clean particularly when using this setting. This setting is not suitable for relative humidity greater than 50%.

Wrist Strap Resistance

DIP switches 5 and 6 control the HIGH test limit.

| Switch 5 | Switch 6 | HIGH Limit Resistance |
|----------|----------|----------------------------------|
| OFF | OFF | wrist strap test disabled |
| ON | ON | 10 Megohms (1×10^7) |
| ON | OFF | 35 Megohms (3.5×10^7) |

default setting

DIP switch 5 must be ON (default setting) for the wrist strap test to be active. The wrist strap test will be disabled if DIP switch 5 is set to OFF.

The LOW limit for the wrist strap test is set to 750 kilohms and cannot be modified by the user.

INSTALLING THE 19276 COMBO TESTER X3

1. Mount the tester at the desired location using the four mounting holes located in the corners of the yellow mounting plate.
2. Set the Dual Foot Plate below the tester.
3. Insert one end of the foot plate cord into the stereo jack located at the bottom of the tester. Insert the opposite end of the cord into the stereo jack located at the back of the foot plate.
4. Use the guide located on the bottom of the foot plate to route the cord out of the side. This will prevent the foot plate cord from being accidentally tripped and unplugged.

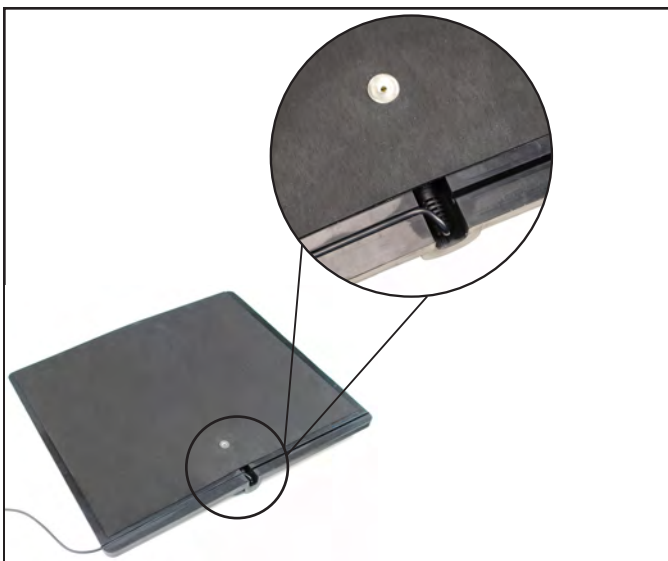


Figure 3. Routing the foot plate cord through the foot plate's guide

5. Insert the ground cord's banana plug into the ground jack located at the bottom of the tester. Connect ground cord's ring terminal to equipment ground. This connection will remove any static charge from the user before the test. **NOTE: Failure to correctly ground the Combo Tester X3 may result in damage not covered under warranty.**
6. Power the Combo Tester X3 using the included power supply.

INSTALLING THE 19277 COMBO TESTER X3 WITH STAND

1. Insert the pedestal to the baseplate with the mounting bracket sloping toward the operator. Be sure to align the screw holes located at the base of the pedestal.
2. Use the two 1/4-20 socket cap screws to secure the pedestal to the baseplate.

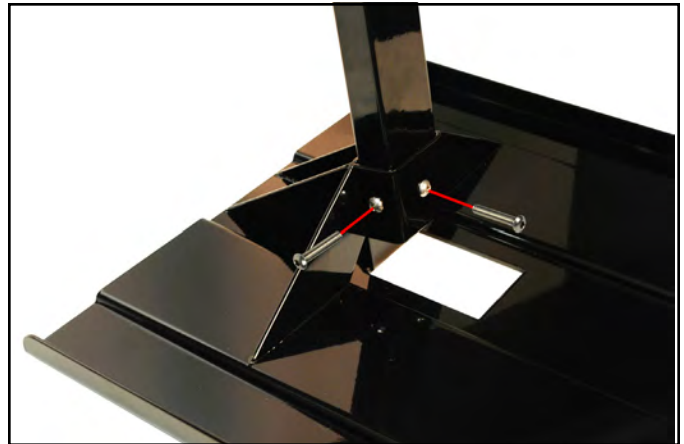


Figure 4. Securing the pedestal to the baseplate using the 2 socket cap screws

3. Route the ground and foot plate cords through the pedestal. Feed the cords from the bottom and have them exit through the top.

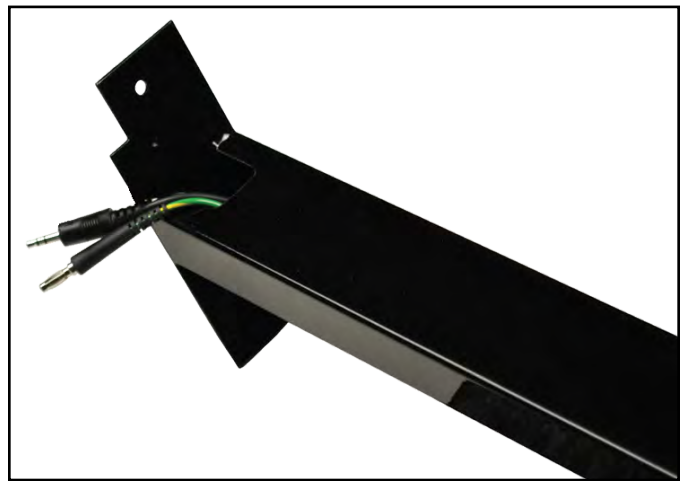


Figure 5. Routing the ground and foot plate cords through the pedestal

- Align the backplate's two holes located above and below the tester to the two holes on the pedestal's mounting bracket. Secure the backplate using the two included 10-32 pan head screws and nuts.



Figure 6. Securing the Combo Tester X3 to the pedestal

- Insert one end of the foot plate cord into the foot plate jack located at the bottom of the tester. Connect the other end of the foot plate cord into the jack located on the dual foot plate.
- Insert the ground cord's banana plug into the ground jack located at the bottom of the tester. Connect ground cord's ring terminal to equipment ground. This connection will remove any static charge from the user before the test. **NOTE: Failure to correctly ground the Combo Tester X3 may result in damage not covered under warranty.**
- Fit the dual foot plate into a position so that is flush with the front and top of the baseplate. Secure the dual foot plate to the baseplate using the four included #4 pan head screws.

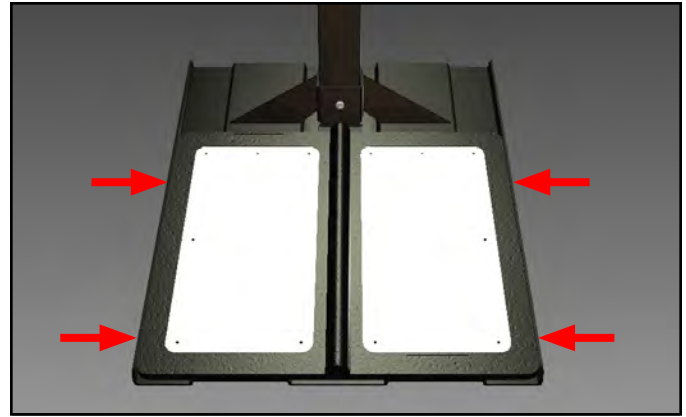


Figure 7. Securing the dual foot plate to the baseplate

- Power the Combo Tester X3 using the included power supply.

Operation

- A circling light around the test switch indicates when the Combo Tester X3 is on standby and ready to perform a test.

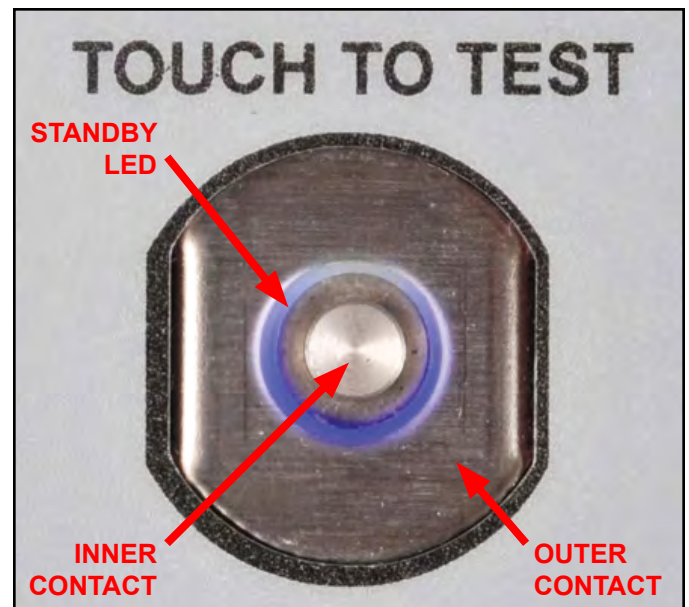


Figure 8. Steady-State Test Switch features and components

- While wearing a wrist strap and/or ESD footwear, plug the wrist cord into its corresponding jack located on the face of the Combos Tester X3. Place one foot on each foot plate.
- To begin the test, use your finger to bridge the test switch's inner and outer contacts. The blue standby LED will become solid to indicate that the test has been initiated. Hold your finger down until the test results are displayed.



Figure 9. Bridging the test switch's contacts to initiate the test

If your finger is removed too early, the tester's LEDs will blink three times to indicate that the test was not completed. DO NOT touch any other metal while performing your test as this will affect your results.

NOTE: Often the initial intermittency will be failure of strain relief connection to resistor as simulated by ESD S1.1-1998 paragraph 5.7 Bending Life Test.

4. A "PASS" test result is indicated by illumination of the green LEDs. A "FAIL LOW" test result is indicated by illumination of the red LEDs. A "FAIL HIGH" test result is indicated by illumination of the yellow LEDs.

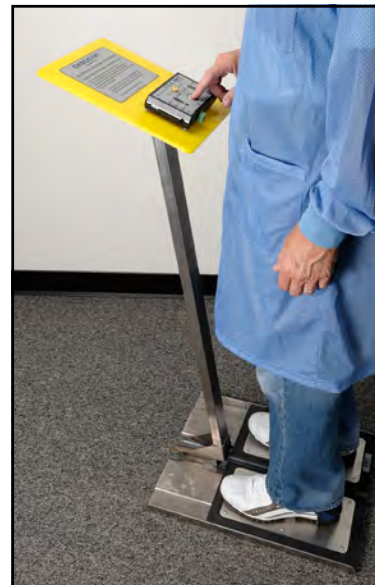
If your ESD test fails, check your wrist strap and footwear to ensure that they are functioning properly, being worn correctly and/or need to be replaced.

NOTE: Failures may be caused by dry skin or minimal sweat layer. For wrist straps, try using an approved dissipative hand lotion such as [Menda Reztore™ ESD Hand Lotion](#) to your wrist prior to use. Footwear test results can be improved by taking a short walk to build a sweat layer for better conductivity.

The Combo Tester X3 may also be used to test smocks or garments that feature a grounding mechanism for operators using a coil cord connection.



Using the [19276](#) Combo Tester X3



Using the [19277](#) Combo Tester X3 with Stand

Calibration

The Combo Tester X3 is calibrated to standards traceable to NIST. Frequency of recalibration should be based on the critical nature of those ESD sensitive items handled and the risk of failure for the ESD protective equipment and materials. In general, we recommend that calibration be performed annually.

The accuracy of the Combo Tester X3 is specified as:

- $\pm 10\%$ for < 1 Megohm range
- $\pm 10\%$ for 1 Megohm and higher resistance ranges
- $\pm 20\%$ for 1 Gigohm Range

A periodic check (once every 6 to 12 months) using a precision resistance box should be performed to verify proper operation.

The EMIT [50424](#) Limit Comparator is available for the convenient period testing of the Combo Tester X3.

The Limit Comparator allows the customer to perform NIST traceable calibration on the Combo Tester X3. The Limit Comparator can be used on the floor shop within a few minutes virtually eliminating downtime, verifying that the Combo Tester X3 is operating within tolerances.

See [TB-6581](#) for more information.



Figure 10. EMIT [50424](#) Limit Comparator

Specifications

Operating Voltage:
12 VDC

Test Switch Voltage:
5 VDC @ open circuit

Wrist Strap and Footwear Test Voltage:
30 VDC @ open circuit

Test Current:
Limited by resistors and varies on the test range setting
(100 kilohms - 1 gigohm)

Relay Contact Rating:
1 A @ 30 VDC max

Temperature Range:
70°F - 104°F (21°C - 40°C) for 1 gigohm footwear test limit
41°F - 104°F (5°C - 40°C) for all other test limits

Operating Conditions:
Indoor use only at altitudes less than 6500 ft. (2 km)
Maximum relative humidity of 80% up to 88°F (31°C)
decreasing linearly to 50% @ 104°F (40°C)
Maximum relative humidity of 50% at 1 Gigohm setting

Pollution Degree:
2 per IEC 644

Limited Warranty

Desco expressly warrants that for a period of one (1) year from the date of purchase Desco Combo Tester X3's will be free of defects in material (parts) and workmanship (labor). Within the warranty period, a credit for purchase of replacement Desco Combo Tester X3's, or, at Desco's option, the units will be repaired or replaced free of charge. If product credit is issued, the amount will be calculated by multiplying the unused portion of the expected one year life times the original unit purchase price. Call our Customer Service Department at 909-627-8178 (Chino, CA) or 781-821-8370 (Canton, MA) for a Return Material Authorization (RMA) and proper shipping instructions and address. Please include a copy of your original packing slip, invoice, or other proof of date of purchase. Any unit under warranty should be shipped prepaid to the Desco factory. Warranty replacements will take approximately two weeks.

If your unit is out of warranty, call our Customer Service Department at 909-627-8178 (Chino, CA) or 781-821-8370 (Canton, MA) for a Return Material Authorization (RMA) and proper shipping instructions and address. Desco will quote repair charges necessary to bring your unit up to factory standards.

Warranty Exclusions

THE FOREGOING EXPRESS WARRANTY IS MADE IN LIEU OF ALL OTHER PRODUCT WARRANTIES, EXPRESSED AND IMPLIED, INCLUDING MERCHANTABILITY AND FITNESS FOR A PARTICULAR PURPOSE WHICH ARE SPECIFICALLY DISCLAIMED. The express warranty will not apply to defects or damage due to accidents, neglect, misuse, alterations, operator error, or failure to properly maintain, clean or repair products.

Limit of Liability

In no event will Desco or any seller be responsible or liable for any injury, loss or damage, direct or consequential, arising out of the use of or the inability to use the product. Before using, users shall determine the suitability of the product for their intended use, and users assume all risk and liability whatsoever in connection therewith.

AMEYA360

Components Supply Platform

Authorized Distribution Brand :



Website :

Welcome to visit www.ameya360.com

Contact Us :

➤ Address :

401 Building No.5, JiuGe Business Center, Lane 2301, Yishan Rd
Minhang District, Shanghai , China

➤ Sales :

Direct +86 (21) 6401-6692
Email amall@ameya360.com
QQ 800077892
Skype ameyasales1 ameyasales2

➤ Customer Service :

Email service@ameya360.com

➤ Partnership :

Tel +86 (21) 64016692-8333
Email mkt@ameya360.com