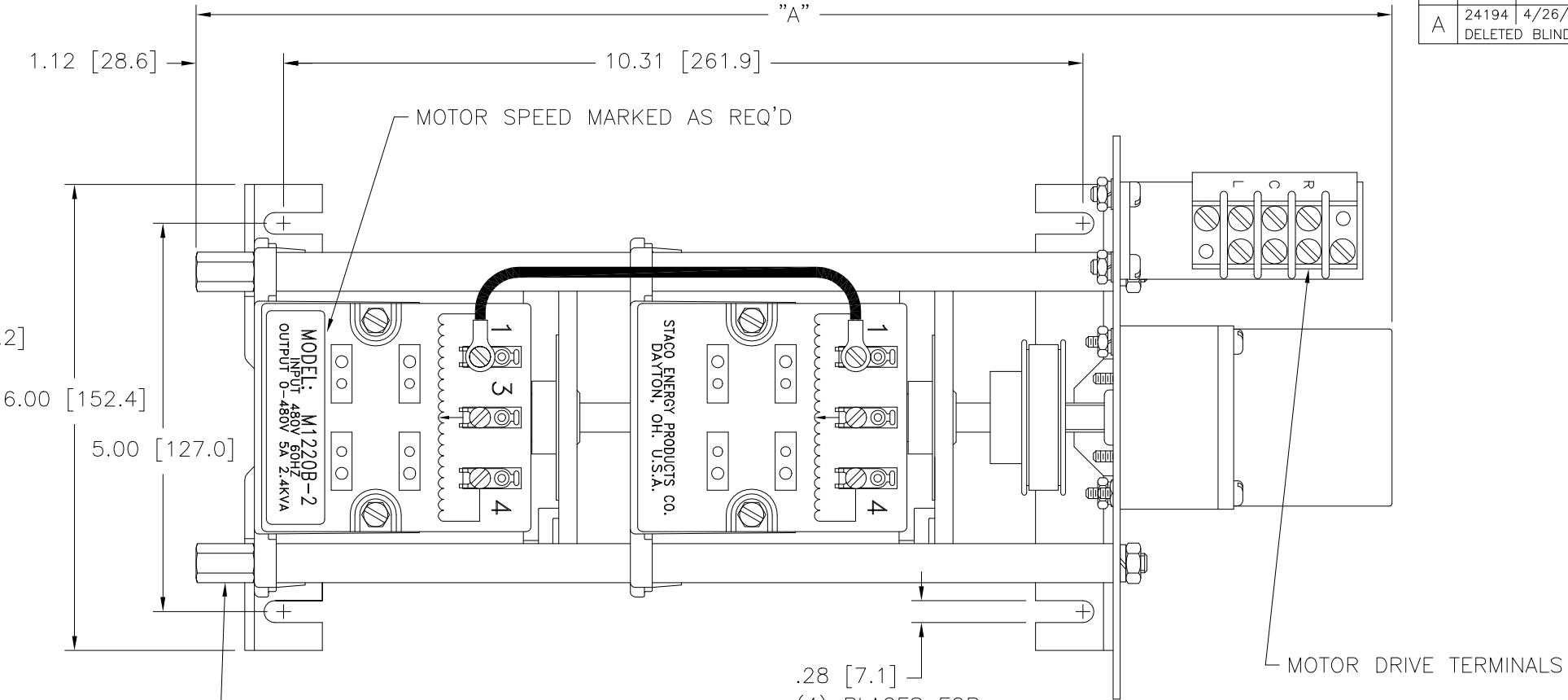
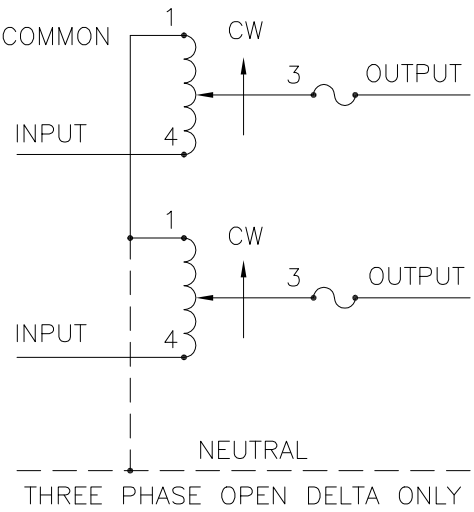


OPTIONAL TERMINALS
FOR PUSH ON OR
SOLDER CONNECTIONS
(.032 X .250) [0.8 X 6.4]

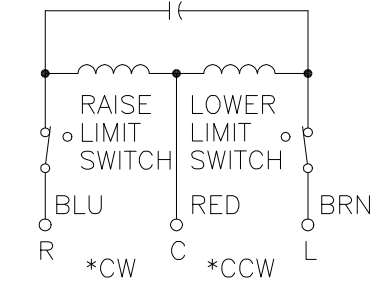


(4) STANDOFFS TAPPED
1/4-28 X .38 [9.5] DEEP
FOR MOUNTING BOLTS

(4) PLACES FOR
CUSTOMER MOUNTING



SCHEMATIC
THREE PHASE OPEN DELTA AND SINGLE
PHASE SERIES. FUSE RECOMMENDED BUT
NOT SUPPLIED.



MOTOR CIRCUIT
120V, 50/60 HZ
* ROTATION AS VIEWED
FROM MOTOR END
MOTOR SPEED: SEE CHART

- + MOTOR DRIVEN UNITS USE TERMINAL CONNECTIONS FOR CCW INCREASING VOLTAGE, AS VIEWED FROM BASE END.
- π IF GANGED UNITS ARE USED IN A SYSTEM THAT ORDINARILY HAS A COMMON NEUTRAL OR GROUND BETWEEN SOURCE AND LOAD, THE NEUTRAL OR GROUND MUST BE CONNECTED TO THE COMMON TERMINALS OF THE VARIABLE TRANSFORMER ASSEMBLY. IF THE SYSTEM HAS NO NEUTRAL, THE LOAD MUST BE BALANCED OR THE TRANSFORMER WILL BE DAMAGED.
- JUMPER PROVIDED IN STANDARD COMMON POSITION AND SHOULD BE MOVED OR REMOVED AS REQUIRED.
- ++ LINE TO LINE VOLTAGE.

SPEED (SECONDS)	MODEL NUMBER	DIM "A"
5	5M1220B-2	15.40 [391.2]
15	15M1220B-2	15.40 [391.2]
30	30M1220B-2	15.79 [401.1]
60	60M1220B-2	15.79 [401.1]

SPECIFICATIONS																			
WIRING	INPUT		OUTPUT						SHAFT ROTATION TO INCREASE VOLTAGE	TERMINAL CONNECTIONS									
	VOLTS	HERTZ	VOLTS	CONSTANT CURRENT LOAD		CONSTANT IMPEDANCE LOAD		FOR INCREASING VOLTAGE AS VIEWED FROM BASE END +											
				MAX. AMPS	MAX. KVA	MAX. AMPS	MAX. KVA	INPUT		JUMPER■	OUTPUT								
SINGLE PHASE SERIES	480	60	0-480	5.0	2.40	7.0	3.36	CW	1-1	4-4	3-3								
								CCW	4-4	1-1	3-3								
THREE PHASE OPEN DELTA π	240 ++	60	0-240	5.0	2.08	7.0	2.91	CW	1-4-1	4-4	3-4-3								
								CCW	4-1-4	1-1	3-1-3								
UNLESS OTHERWISE SPECIFIED, TOLERANCE IS ±				TITLE: SPEC. CONTROL DRAWING															
DECIMALS .XX .005																			
ANGLES 1°				MOTORIZED VARIABLE XFMR															
DRAFT 1-1/2°																			
MATERIAL:				MODEL: M1220B-2															
ALL DIMENSIONS APPLY AFTER PLATING																			
The information and design disclosed herein was originated by and is the property of STACO ENERGY PRODUCTS CO., which reserves all patent, proprietary, design, manufacturing, reproduction, use and sale rights thereto, and to any article disclosed therein except to the extent rights are expressly granted to others. The foregoing does not apply to vendor proprietary parts.				DRAWN BY				DATE		FIRST USED ON		DO NOT SCALE DWG.		CUSTOMER APPROVAL		DATE			
				S.A. SMITH				9/26/97											
				CHECKER				DATE		WEIGHT APPROX.		CODE IDENT. NO.		DWG. SIZE		DWG. NO.			
										29 LBS		83008		D		031-3390			
								ENGINEER		DATE		SCALE		SHEET 1 OF 1					



Authorized Distribution Brand :



Website :

Welcome to visit www.ameya360.com

Contact Us :

➤ Address :

401 Building No.5, JiuGe Business Center, Lane 2301, Yishan Rd
Minhang District, Shanghai , China

➤ Sales :

Direct +86 (21) 6401-6692

Email amall@ameya360.com

QQ 800077892

Skype ameyasales1 ameyasales2

➤ Customer Service :

Email service@ameya360.com

➤ Partnership :

Tel +86 (21) 64016692-8333

Email mkt@ameya360.com