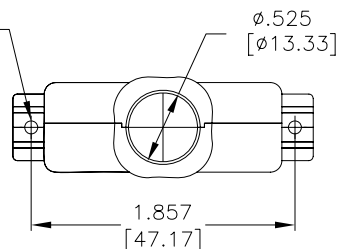
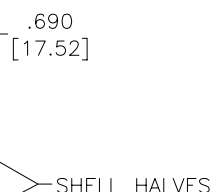
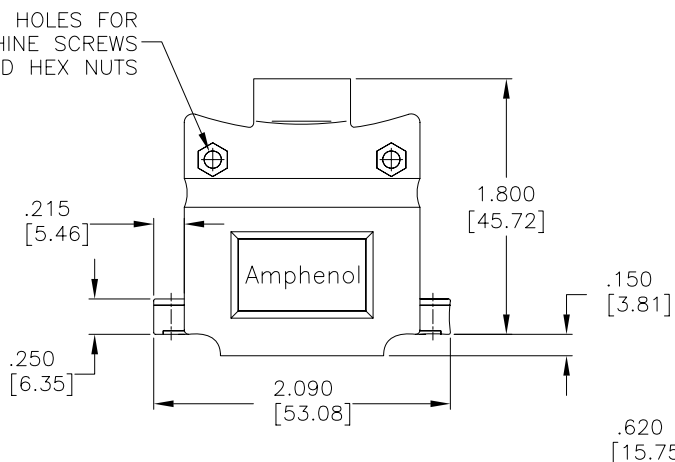


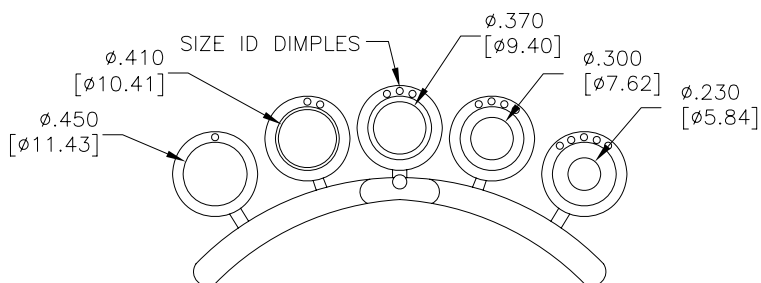
2 HOLES FOR  
SADDLE WASHERS  
AND CAPTIVE  
SCREWS



2 HOLES FOR  
MACHINE SCREWS  
AND HEX NUTS



SHELL HALVES



WASHER OR WASHER  
PORTION OF INSERT

SIZES: 1 2 3 4 5

COMPRESSION INSERT TREE



#### NOTES:

- 1.EACH BACKSHELL KIT CONTAINS 2 SHELL HALVES, 1 COMPRESSION INSERT TREE AND 2 OF EACH HARDWARE ITEM SHOWN.
- 2.BACKSHELL IS SUITABLE FOR SUBMINIATURE D CONNECTOR, B SIZE SHELL (25 POSITION STANDARD CONTACTS OR 44 POSITION HIGH DENSITY CONTACTS).
- 3.COMPRESSION JACKET INSERTS ARE DESIGNED FOR A CABLE DIAMETER RANGE OF .230 [5.84] TO .450 [11.43].
- 4.MATERIALS - ALL MATERIALS ARE RoHS COMPLIANT  
SHELL - ZINC ALLOY, ZINC PLATED, HEXAVALENT CHROMIUM FREE FINISH.  
INSERT TREE - BLACK THERMOPLASTIC, 75 DUROMETER  
HARDWARE - STEEL, ZINC PLATED, HEXAVALENT CHROMIUM FREE FINISH

#### ASSEMBLY INSTRUCTIONS:

- 1.SELECT THE TIGHTEST INSERT THAT WILL FIT OVER THE CABLE, AND FEED THE CABLE THROUGH IT, PLACING THE END WITH THE SMALLER OD (THE END WITHOUT THE WASHER) TOWARDS THE CONNECTOR.
- 2.TERMINATE THE CABLE WIRES TO THE CONNECTOR.
- 3.CUT THE JACKET, FOLD THE SHIELDING BACK OVER THE OUTSIDE OF THE INSERT AND CUT IT JUST SHORT OF THE WASHER.
- 4.INSTALL SADDLE WASHERS, CAPTIVE SCREWS AND CONNECTOR.
- 5.PLACE THE WASHER IN OUTERMOST DEPRESSION IN CABLE EXIT AREA OF THE BACKSHELL AND SCREW SHELL HALVES CLOSED.



AMPHENOL PART NUMBER 17E-1657-25

DRAWN	J. WOOD	DATE	SEP28/07
DESIGNED			
CHECKED	K. LAMBIE	DATE	OCT23/07
I. E. APPRD.			
Q. A. APPRD.			
DWG. APPRD.			
ENG. REL. NO.	EAR 13158	DWG	DRAWING NO.
REF.		B	P-17E-1657-25
DIMENSIONS ARE IN	CODE ID. NO.	SCALE	1.25/1
INCHES [mm]	03554	WT.	-----
		SURF.	-----
		SHEET	1 OF 1

Amphenol Canada Corp.

17E SERIES METAL BACKSHELL FOR D-SUB CONNECTOR WITH B SIZE SHELL (25 STD OR 44 HD CONTACTS), STRAIGHT EXIT, #4-40 THREAD, RoHS COMPLIANT

THIS DOCUMENT CONTAINS PROPRIETARY INFORMATION AND SUCH INFORMATION MAY NOT BE DISCLOSED TO OTHERS FOR ANY PURPOSE OR USED FOR MANUFACTURING PURPOSES WITHOUT WRITTEN PERMISSION FROM AMPHENOL CANADA CORP.

# AMEYA360

Components Supply Platform

Authorized Distribution Brand :



Website :

Welcome to visit [www.ameya360.com](http://www.ameya360.com)

Contact Us :

➤ Address :

401 Building No.5, JiuGe Business Center, Lane 2301, Yishan Rd  
Minhang District, Shanghai , China

➤ Sales :

Direct     +86 (21) 6401-6692  
  
Email        amall@ameya360.com  
  
QQ           800077892  
  
Skype        ameyasales1 ameyasales2

➤ Customer Service :

Email        service@ameya360.com

➤ Partnership :

Tel           +86 (21) 64016692-8333  
  
Email        mkt@ameya360.com