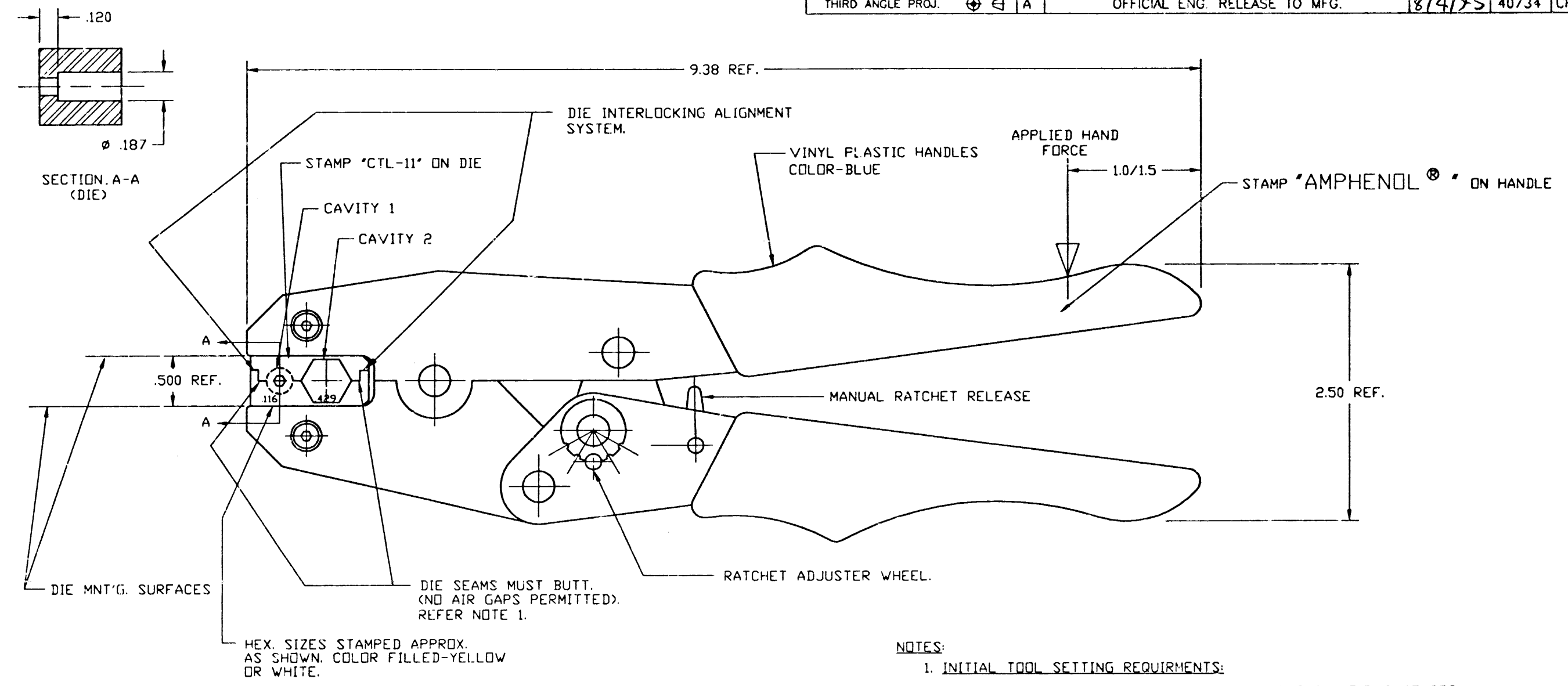


CTL-11		REVISIONS			
DRAWING NO.	REV	DESCRIPTION	DATE	ECO	APPR
THIRD ANGLE PROJ.	A	OFFICIAL ENG. RELEASE TO MFG.	8/4/95	40734	CPM/OR



- NOTES:
1. INITIAL TOOL SETTING REQUIRMENTS:
WITH DIES FIRMLY AFFIXED IN TOOL ON THE DIE MNT'G. SURFACES, CLOSE THE TOOL FULLY (UNTIL THE RATCHET RELEASES) WITH 25-35 LBS. HAND FORCE. THE DIES MUST BE 'BUTTED' (TOUCHING BOTH FRONT & REAR SURFACES). THE RATCHET ADJUSTER WHEEL SHOULD BE POSITIONED IN THE CENTER INDENT (+/- ONE INDENT POSITION).
 2. NOTE: LABEL 999-420 MUST BE AFFIXED TO TOOL CONTAINER BOX.
 3. DO NOT SCALE THIS DRAWING.
 4. UNLESS OTHERWISE SPECIFIED, ALL DIMENSIONS ARE AFTER PLATING.

CAVITY NO	DIM. ACROSS HEX FLATS	GROOVE ACCOMMODATIONS
1	.116 ⁺⁰⁰⁰ / ₋₀₀₃	CENTER CONTACT
2	.429 ±003	BELDEN 9913, 9914

UNLESS OTHERWISE SPECIFIED, DIMENSIONS ARE IN INCHES AND TOLERANCES ARE: 2 PLACE DECIMAL ±.015 (0.381 mm) 3 PLACE DECIMAL ±.005 (0.127 mm) ANGLES ± 1°	MATERIAL MATERIAL & FINISH AS PURCHASED	DRAWN C. McGRATH	DATE 6/14/95	TITLE QUICK CRIMP TOOL FOR 'N' CRIMP PLUGS	Amphenol Amphenol Corporation RF/Microwave Operations Danbury, Conn. U.S.A. 06810
		ENGINEER <i>[Signature]</i>	DATE 7-28-95		
NOTICE - These drawings, specifications, or other data (1) are, and remain the property of Amphenol Corp. (2) must be returned upon request; and (3) are confidential and not to be disclosed to any person other than those to whom they are given by Amphenol Corp. The furnishing of these drawings, specifications, or other data by Amphenol Corp., or to any other person to anyone for any purpose is not to be regarded by implication or otherwise in any manner licensing, granting rights or permitting such holder or any other person to manufacture, use or sell any product, process or design, patented or otherwise, that may in any way be related to or used by said drawings, specifications, or other data.	REFERENCE EAR 962090-5	APPROVED <i>[Signature]</i>	DATE 7-28-95	SCALE: 1:1 SHEET OF	ISSUE A
		CAD FILE F:\DEPT611\TODS\CTL-11	CODE ID 74868		

Authorized Distribution Brand :



Website :

Welcome to visit www.ameya360.com

Contact Us :

➤ Address :

401 Building No.5, JiuGe Business Center, Lane 2301, Yishan Rd
Minhang District, Shanghai , China

➤ Sales :

Direct +86 (21) 6401-6692

Email amall@ameya360.com

QQ 800077892

Skype ameyasales1 ameyasales2

➤ Customer Service :

Email service@ameya360.com

➤ Partnership :

Tel +86 (21) 64016692-8333

Email mkt@ameya360.com