

Customer Information Sheet

DRAWING No.: K3601-91

SHEET 2 OF 2

IF IN DOUBT - ASK

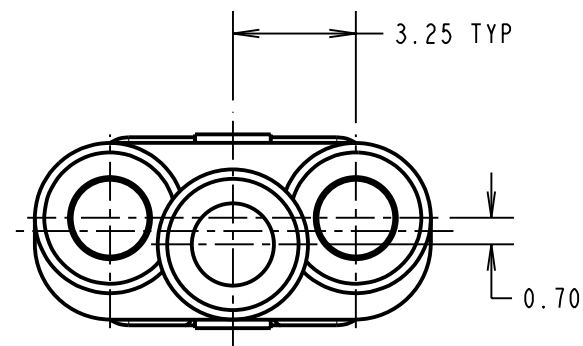
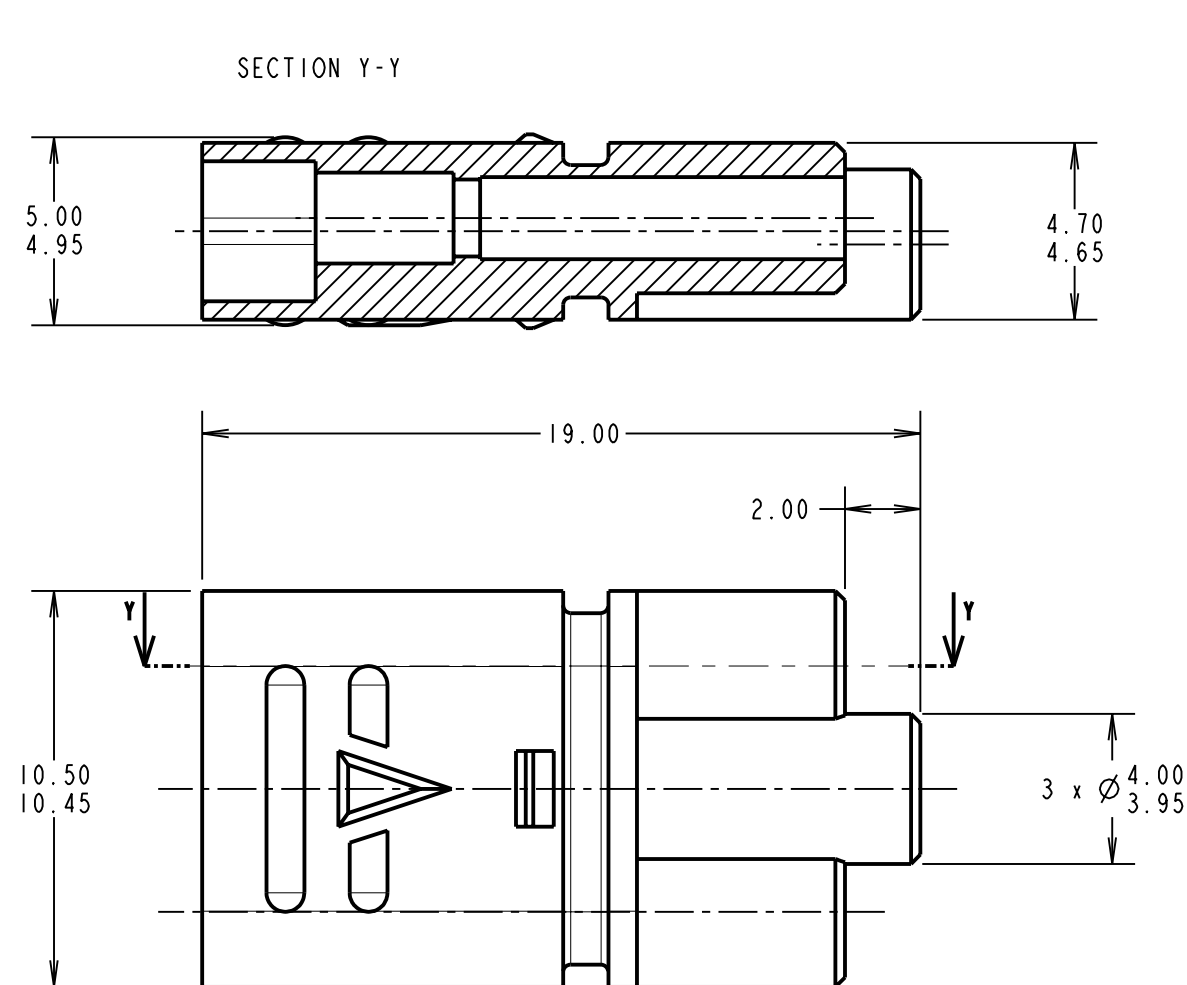
©

NOT TO SCALE

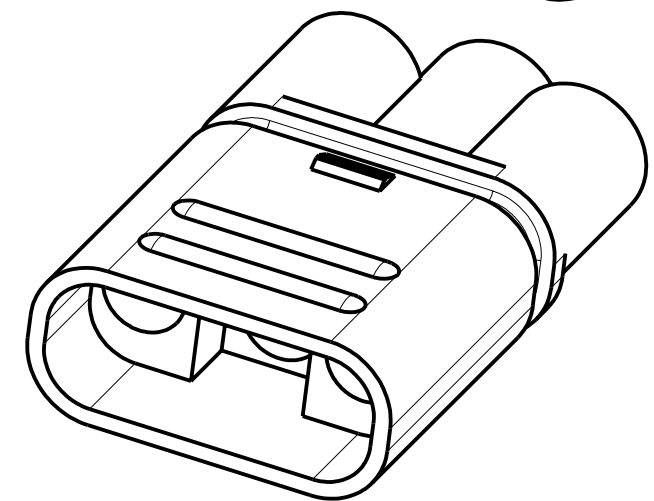
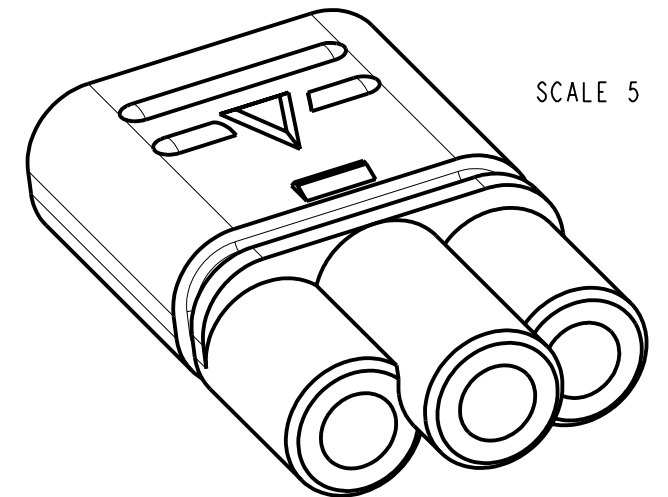
THIRD ANGLE PROJECTION

ALL DIMENSIONS IN mm

SEE COMPONENT SPECIFICATION C034XX FOR ASSEMBLY INSTRUCTIONS AND TECHNICAL DATA



ORDER CODE:
K3601-91
COLOUR
91 - GREY



SPECIFICATIONS:

ELECTRICAL:

CURRENT RATING @ 25°C = 10A MAX
CURRENT RATING @ 85°C = 7.5A MAX
WORKING VOLTAGE = 250V AC/DC
VOLTAGE PROOF = 750V AC/DC
CONTACT RESISTANCE (INITIAL) = 10mΩ MAX
CONTACT RESISTANCE (AFTER CONDITIONING) = 15mΩ MAX
INSULATION RESISTANCE (INITIAL) = 1,000MΩ @ 500V DC FOR 1 MINUTE
INSULATION RESISTANCE (AFTER CONDITIONING) = 100MΩ @ 500V DC FOR 1 MINUTE

MECHANICAL:

DURABILITY = 100 OPERATIONS
RETENTION FORCE OF CONTACT IN MOULDING (INITIAL) = 20N MIN
INSERTION FORCE OF CONNECTOR ASSEMBLY = 40N MAX
WITHDRAWAL FORCE OF CONNECTOR ASSEMBLY = 10N MIN
CRIMP PULL-OFF FORCE (BS 5G 178) = 142N MIN
PROTECTION RATING (BS EN 60529) = IP55 (SEE NOTE 5)
IP67 (WITH 'O' RING K3605-00)

ENVIRONMENTAL:

TEMPERATURE RANGE = -40°C TO +105°C

NOTES:

- FOR COMPLETE SPECIFICATION, SEE COMPONENT SPECIFICATION C034XX (LATEST ISSUE). THE COMPONENT SPECIFICATION ALSO INCLUDES NOTES ON ASSEMBLY METHODS.
- THIS MOULDING CAN BE USED WITH 2-OFF SOLDER-BUCKET CONTACTS K3603-06, OR 2-OFF CRIMP CONTACTS K3607-06 (SEE INSTRUCTION SHEET IS-01). SPECIFICATIONS LISTED HERE APPLY FOR A COMPLETE ASSEMBLY OF MOULDINGS AND CONTACTS.
- ASSEMBLY TOOL ZK3610-00 CAN BE USED TO AID INSERTION AND EXTRACTION OF CONTACTS FROM MOULDING (SEE INSTRUCTION SHEET IS-22).
- THIS MOULDING MATES WITH 2-WAY PIN MOULDING K3600-91.
- THIS MOULDING MAY BE BACK-POTTED TO ACHIEVE A PROTECTION RATING OF IP55 (WHEN MATED). IF AN 'O' RING (PART No. K3605-00) IS FITTED, THE PROTECTION RATING IS IP67 (MATED AND BACK-POTTED).
- ALL TOLERANCES ARE ±0.05 UNLESS OTHERWISE STATED.

RA	2	15.06.09	10352
NAME	ISS.	DATE	C/NOTE
APPROVED: R. ADDE			
CHECKED: M.G. PLESTED			
DRAWN: W. J. BOURNE			
CUSTOMER REF.:			
ASSEMBLY DRG:			

HARWIN

HARWIN USA TEL: 603 893 5376 FAX: 603 893 5396 mis@harwin.com	HARWIN Europe (UK) TEL: 023 9231 4545 FAX: 023 9231 4590 mis@harwin.co.uk	HARWIN Asia TEL: +65 6 779 4909 FAX: +65 6 779 3868 mis@harwin.com.sg
--	--	--

THIS DRAWING AND ANY INFORMATION OR DESCRIPTIVE MATTER SET OUT HEREON ARE CONFIDENTIAL AND COPYRIGHT PROPERTY OF THE HARWIN GROUP AND MUST NOT BE DISCLOSED, LOANED, COPIED OR USED FOR MANUFACTURING, TENDERING OR FOR ANY OTHER PURPOSE WITHOUT THEIR WRITTEN PERMISSION.

TOLERANCES
X = ±1mm
X.X = ±0.25mm
X.XX = ±0.10mm
X.XXX = ±0.01mm
ANGLES = ±5°
UNLESS STATED

MATERIAL:
30% GLASS-FILLED POLYESTER
UL94V-0, GREY
FINISH:
S/AREA: mm²

TITLE:
POWER CONNECTOR
2-WAY SOCKET MOULDING

DRAWING NUMBER:
K3601-91
SHT 2 OF 2

AMEYA360

Components Supply Platform

Authorized Distribution Brand :



Website :

Welcome to visit www.ameya360.com

Contact Us :

➤ Address :

401 Building No.5, JiuGe Business Center, Lane 2301, Yishan Rd
Minhang District, Shanghai , China

➤ Sales :

Direct +86 (21) 6401-6692

Email amall@ameya360.com

QQ 800077892

Skype ameyasales1 ameyasales2

➤ Customer Service :

Email service@ameya360.com

➤ Partnership :

Tel +86 (21) 64016692-8333

Email mkt@ameya360.com