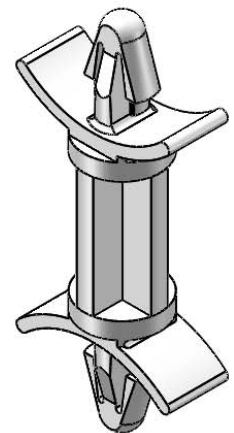


TO SNAP-LOCK IN A .156±.003
[4±0.08] DIA. HOLE, IN A
.031-.078 [0.79-1.98] PANEL THICKNESS
(BOTH ENDS)

MATERIAL: NYLON 6/6 UL 94 V-2 (RMS-01) COLOR: NATURAL PART NO.	MATERIAL: NYLON 6/6 UL 94 V-0 (RMS-19) COLOR: NATURAL PART NO.	DIM. "A" ±.015 [0.4]
DLCBS-3-01	DLCBS-3-19	3/16 [4.8]
DLCBS-4-01	DLCBS-4-19	1/4 [6.4]
DLCBS-6-01	DLCBS-6-19	3/8 [9.5]
DLCBS-8-01	DLCBS-8-19	1/2 [12.7]
DLCBS-9-01	DLCBS-9-19	9/16 [14.3]
DLCBS-10-01	DLCBS-10-19	5/8 [15.9]
DLCBS-12-01	DLCBS-12-19	3/4 [19.1]
DLCBS-14-01	DLCBS-14-19	7/8 [22.2]



- NOTES:
 1. MATERIAL: NYLON 6/6 UL 94 HB (RMS-73)
 COLOR: NATURAL.
 AVAILABLE BY SPECIAL ORDER ONLY.
 TO ORDER USE P/N DLCBS-X-73
 2. ALTERNATE UNITS FOR REFERENCE ONLY.

REV.	DESCRIPTION	ENGR.	DATE
D	SEE CO 200393 FOR CHANGES	SK	07.23.09
C	REDRAWN, SEE ECN #1208 FOR CHANGES	SK	11/29/06
-	SEE ENGINEERING FOR REVISIONS A AND B	---	----

TITLE: DUAL LOCKING CIRCUIT BOARD SUPPORT, TYPE 1						DWG IN [MM] IN [MM]			
CREATED USING SOLIDWORKS TOLERANCES UNLESS NOTED .XX=±.010 .XXX=±.005 FRAC.=±1/64 ANG.=±1°		FILE #: DLCBS1	DWN: SK	APP: RT	FINAL				
		SHEET: 1 OF 1	SHEET SIZE: A	DT: 11/22/06	CHKD: SJ	PART #		PRINT TYPE	
		RE: RICHCO, INC.		RICHCO, INC. ENG@RICHCO-INC.COM (773) 539-4060		SEE TABLE		CA	

AMEYA360

Components Supply Platform

Authorized Distribution Brand :



Website :

Welcome to visit www.ameya360.com

Contact Us :

➤ Address :

401 Building No.5, JiuGe Business Center, Lane 2301, Yishan Rd
Minhang District, Shanghai , China

➤ Sales :

Direct +86 (21) 6401-6692

Email amall@ameya360.com

QQ 800077892

Skype [ameyasales1](#) [ameyasales2](#)

➤ Customer Service :

Email service@ameya360.com

➤ Partnership :

Tel +86 (21) 64016692-8333

Email mkt@ameya360.com