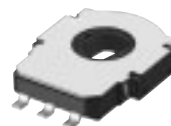


### 10 mm GS Sensors

Type: **EVWAE/EVWAD**

Low profile, long life sensor, which is suitable for detecting the angles of rotating axes.



#### ■ Features

- Low profile (H=2.2 mm),  
Shaft hole diameters of up to 4 mm are available.
- Long operation life: 1 million operation cycles.
- A wide electrical output angle of a maximum 343 °,  
ready for SMDs

#### ■ Recommended Applications

- Detection of air conditioner damper angles
- Detection of various control unit angles

#### ■ Explanation of Part Numbers

1	2	3	4	5	6	7	8	9	10	11	12	
<div>E</div>	<div>V</div>	<div>W</div>	<div>A</div>	<div><div>E</div><div>D</div></div>					<div>B</div>			
Product Code			Specification						Taper & Resistance			
						Shaft Type		7th, 8th, 9th				
						D hole Type		001				
						H hole Type		002				

#### ■ Specifications

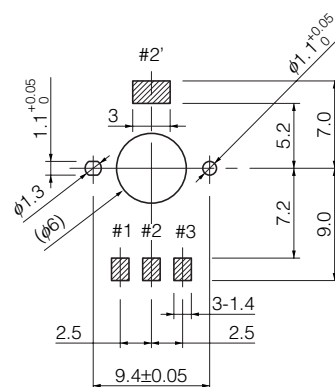
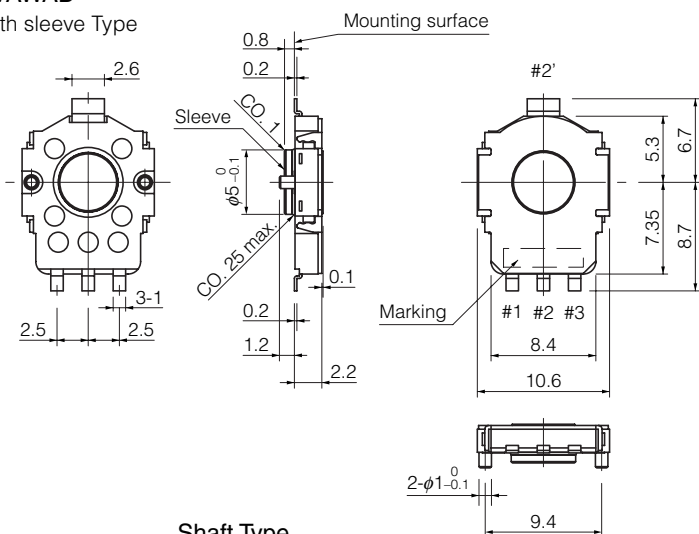
Mechanical	Rating	0.05 W, 5V
	Operating Force	3 mN·m max.
Electrical	Total Resistance	5 kΩ±30 %, 10 kΩ±30 %
	Linearity	±2 % max.
Endurance	Operating Life	1000000 cycles min. (operation Angle ±30 °)
Minimum Quantity/Packing Unit		1500 pcs. Embossed Taping (Reel Pack)
Quantity/Carton		6000 pcs.

■ Dimensions in mm (not to scale)

No. 1

EVAWAE  
EVAWAD

With sleeve Type



Circuit diagram

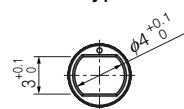
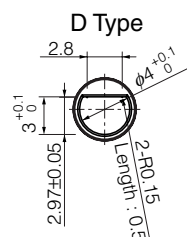
PWB mounting hole for reference

(Pitch tolerance :  $\pm 0.1$ )

View from mounting side

### Shaft Type

H Type

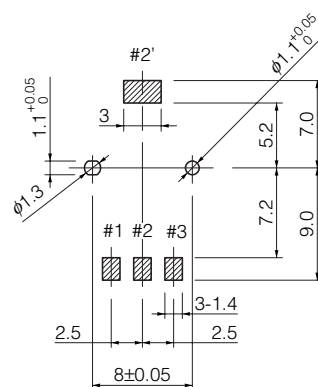
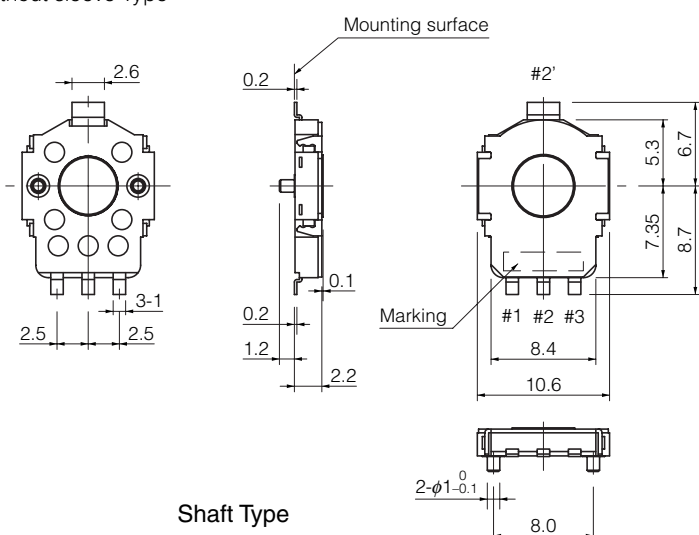


Shaft Type	7th, 8th, 9th
D Type	001
H Type	002

No. 2

EVAWAE  
EVAWAD

Without sleeve Type



Circuit diagram

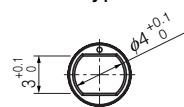
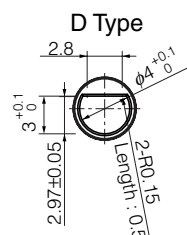
PWB mounting hole for reference

(Pitch tolerance :  $\pm 0.1$ )

View from mounting side

### Shaft Type

H Type



Shaft Type	7th, 8th, 9th
D Type	001
H Type	002

# AMEYA360

## Components Supply Platform

### Authorized Distribution Brand :



### Website :

Welcome to visit [www.ameya360.com](http://www.ameya360.com)

### Contact Us :

#### ➤ Address :

401 Building No.5, JiuGe Business Center, Lane 2301, Yishan Rd  
Minhang District, Shanghai , China

#### ➤ Sales :

Direct +86 (21) 6401-6692

Email [amall@ameya360.com](mailto:amall@ameya360.com)

QQ 800077892

Skype ameyasales1 ameyasales2

#### ➤ Customer Service :

Email [service@ameya360.com](mailto:service@ameya360.com)

#### ➤ Partnership :

Tel +86 (21) 64016692-8333

Email [mkt@ameya360.com](mailto:mkt@ameya360.com)