

# Mercury™ T2 USB 2.0 Protocol Analyzer



## Key Features

### ■ Portable and Affordable

Compact, bus-powered system measures 3.0" x 3.5", weighs 5 oz.

### ■ Supports USB 2.0

Capable of capturing all USB speeds up to 2.0 including OTG (On-the-Go)

### ■ 256 MB Recording Memory

Extend capture time with spool-to-disk recording

### ■ High Impedance probe

Non-intrusive probe preserves real-world signal and timing conditions

### ■ Advanced Triggering

Isolates important traffic, specific errors or patterns

### ■ Extensive Decodes

Mass storage, Bluetooth HCI, Hub, PTP/Still Image, Printer, Human Interface Device (HID), Audio, Video and Communication

### ■ Hardware Filtering

Automatically exclude non-essential traffic

### ■ Event Reporting

Quickly identify and track error rates, abnormal bus activity or timing conditions

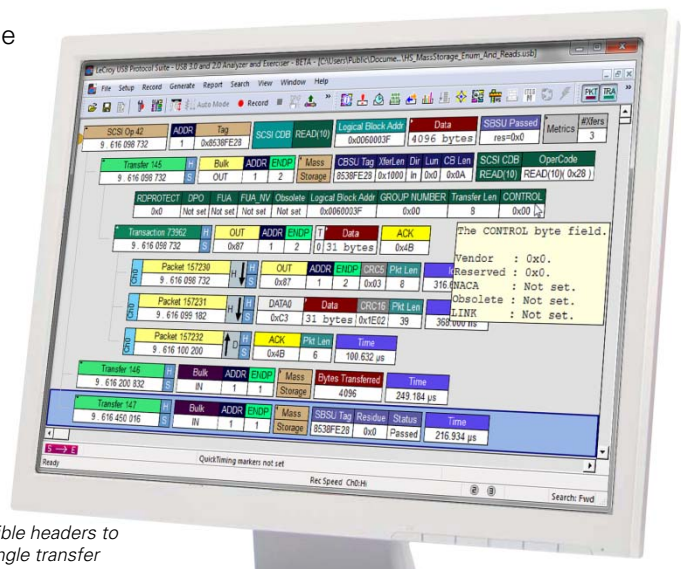
The Teledyne LeCroy Mercury T2 is the industry's smallest, most affordable hardware-based USB 2.0 protocol analyzer that combines the de-facto standard CATC Trace display with the very latest USB class decoding. The Mercury T2 fits in a shirt pocket yet provides much of the same lab quality protocol analysis capabilities offered in Teledyne LeCroy's top-of-the-line USB analyzers.

## View and Understand USB Protocol

Featuring the industry-leading CATC Trace™ expert analysis software, the Mercury T2 system provides an easy-to-use display that graphically decodes logical protocol events. With the Standard or Advanced edition, all protocol layers can be expanded to show the underlying transactions and packets. Tooltips help explain protocol events making it easier for non-experts to identify errors.

## Real Time Triggering

Isolating specific protocol events with real time triggering is essential to capture intermittent problems. The Mercury T2 provides sophisticated triggering with drag-and-drop selections for PID type, data patterns, standard requests, errors, and bus events. The Mercury T2 features 256 MB of on-board memory and also supports spool-to-disk capture for extended recording.



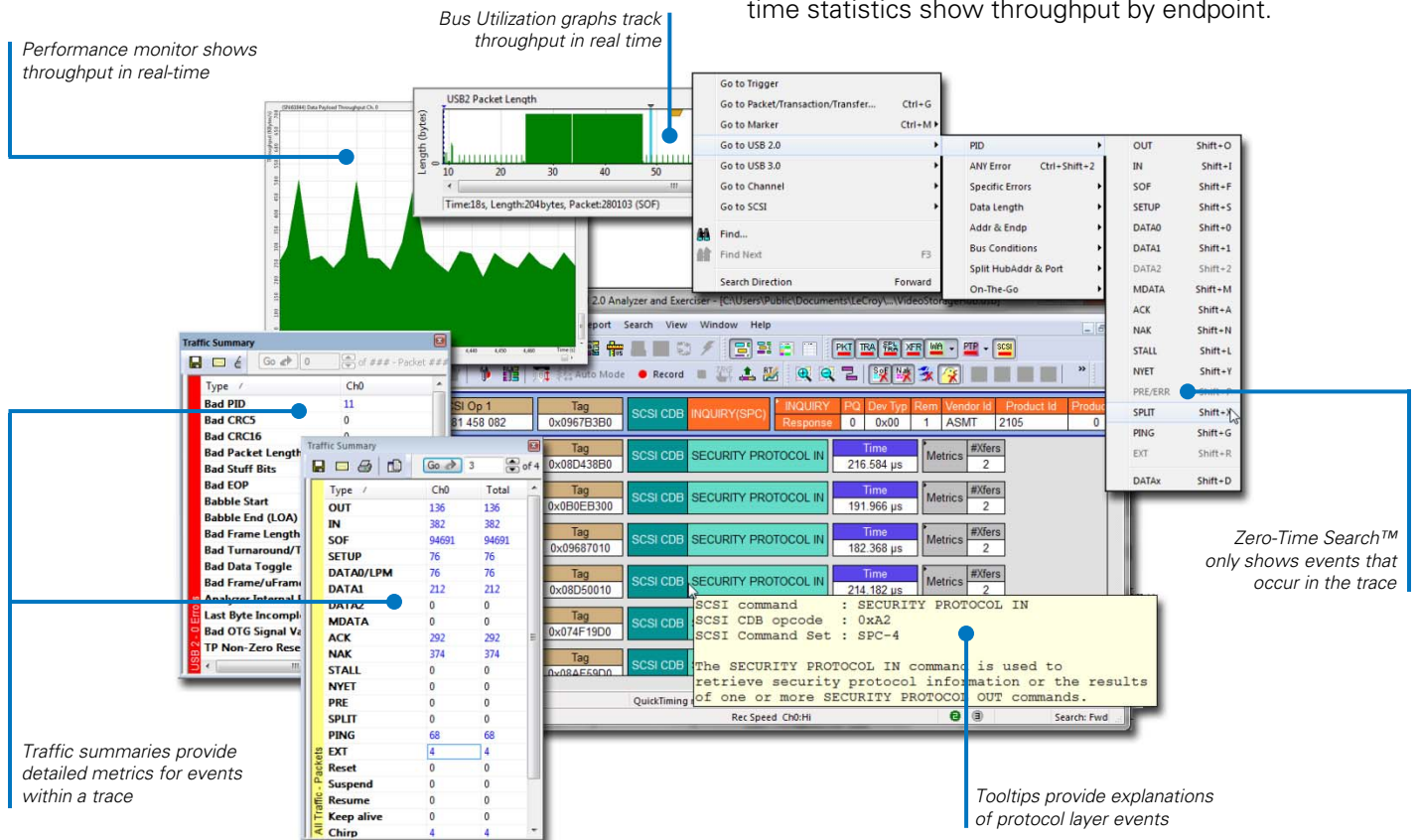
The CATC Trace display uses collapsible headers to group all packets that are part of a single transfer

## USB Device Decoding

Comprehensive USB device class decoding is included in every model of the Mercury T2. This allows users to see upper-level mapped protocol events within the trace, eliminating the tedious process of manually decoding device specific commands.

## Find the Issues Fast

The Mercury T2 provides many mechanisms to measure and report on USB traffic. The Bus Utilization display shows data, packet length, and bus usage by device. Using the Traffic Summary window, users can evaluate statistical reports at a glance or navigate to individual fields. Real time statistics show throughput by endpoint.



Feature Comparison	Mercury T2 Standard USB 2.0	Mercury T2 Advanced USB 2.0
USB2.0 / USB1.1 Recording	✓	✓
Spool-to-Disk Recording	✓	✓
Recording Memory	256 MB	256 MB
USB 2.0 Event Triggering	✓	✓
PID Type and Dev Address	✓	✓
Data Pattern	✓	✓
Max States per Sequence	4	7
No. of Sequences	2	2
USB Real-time Statistics (RTS)		✓
Export to .CSV		✓
Automation API		✓
Verification Script Engine (VSE)		✓

## Specifications

Host Requirements	Windows 7 or Windows 8
Standard Trigger Events	Packet Identifier, Token Pattern, Frame Pattern, Device Request, Data Pattern, Bus Conditions, Errors, Transactions, Data Length, Splits
Reporting & Statistics	Packet Level, Transaction Level, Transfer Level, Error Reports
Recording Memory Size	256 MB
Power Consumption	Idle: 500 mA (typical); Active: 560 mA (typical)
Connectors	USB Standard "A" and "B" receptacles
Temperature	Operating: 0°C to 55°C (32°F to 131°F) Non-Operating: -20°C to 80°C (-4°F to 176°F)
Humidity	Operating: 10% to 90% non-condensing
Dimensions	80 x 90 x 24 mm (3.0" x 3.6" x 1")
Net Weight	158g (5.8 oz)



# AMEYA360

Components Supply Platform

Authorized Distribution Brand :



Website :

Welcome to visit [www.ameya360.com](http://www.ameya360.com)

Contact Us :

➤ Address :

401 Building No.5, JiuGe Business Center, Lane 2301, Yishan Rd  
Minhang District, Shanghai , China

➤ Sales :

Direct     +86 (21) 6401-6692  
Email       amall@ameya360.com  
QQ         800077892  
Skype       ameyasales1 ameyasales2

➤ Customer Service :

Email       service@ameya360.com

➤ Partnership :

Tel         +86 (21) 64016692-8333  
Email       mkt@ameya360.com