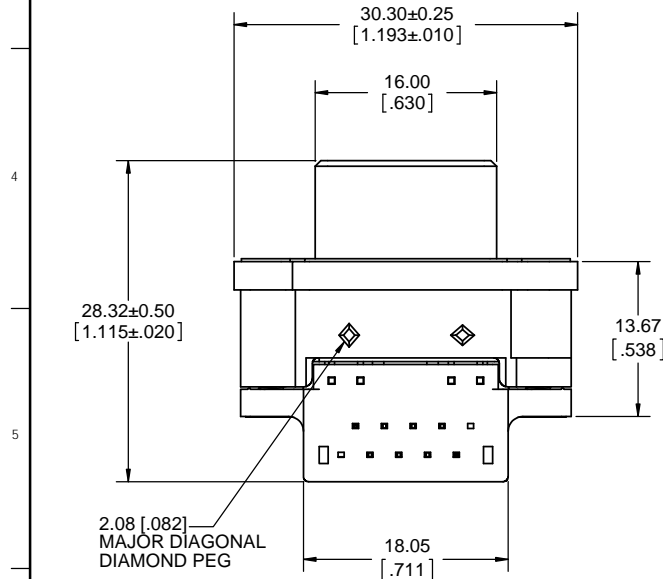
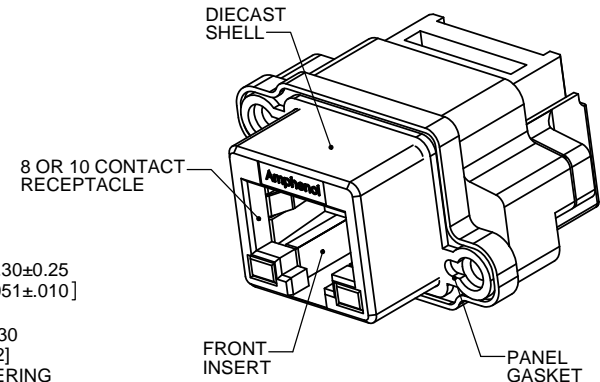
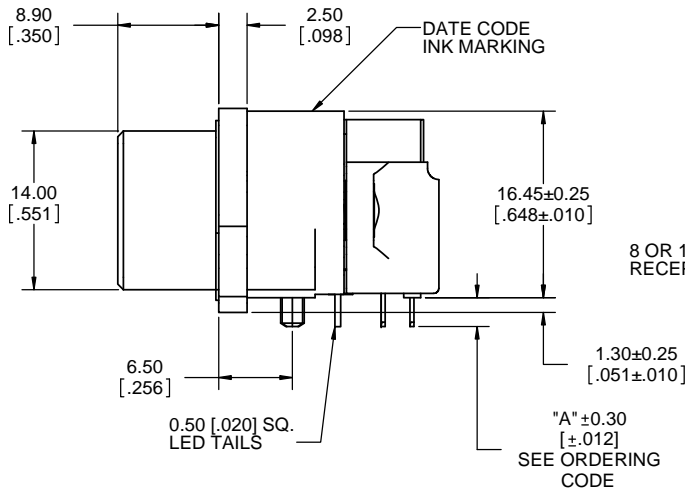
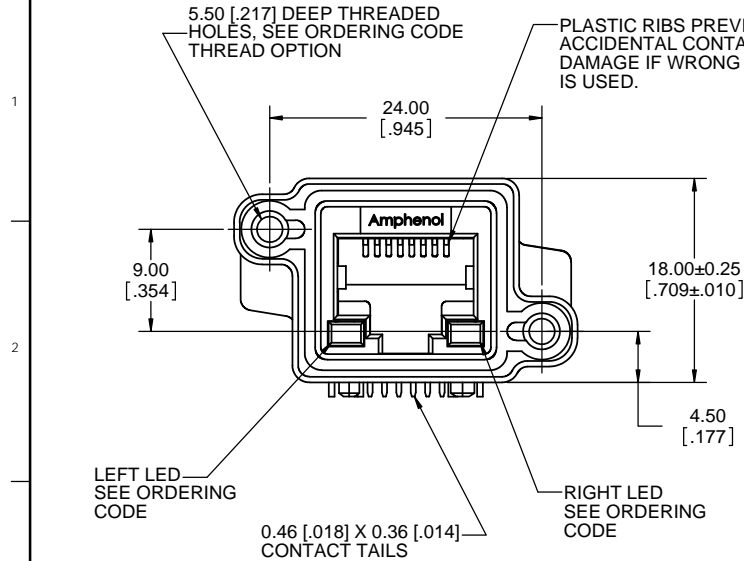


REVISIONS			
REV	DESCRIPTION, ECN, EAR NO.	DATE	APP'D
B	PRODUCT DRAWING (EAR 13977)	APR11/12	K.L.
C	PRODUCT DRAWING (EAR 14091)	JUL24/12	K.L.



ORDERING CODE: **MRJR-53XX-X1**

SERIES, RUGGED RJ

RJ45 RECEPTACLE, RIGHT ANGLE PCB TAIL

NUMBER OF CONTACTS:

8 = 8 CONTACTS

A = 10 CONTACTS

LED OPTION:

0 = NONE

1 = LEFT GREEN, RIGHT YELLOW

4 = LEFT YELLOW, RIGHT GREEN

5 = LEFT GREEN, RIGHT GREEN

TAIL LENGTH AND MOUNTING HOLE THREAD OPTION:

0 = "A" 2.54 [.100], #4-40 UNC

B = "A" 3.81 [.130], #4-40 UNC

M = "A" 2.54 [.100], M3 X 0.5

P = "A" 3.81 [.130], M3 X 0.5

SINGLE PORT

**SPECIAL CONNECTORS**

MANY UNIQUE FEATURES ARE READILY AVAILABLE TO SUIT CUSTOMER REQUIREMENTS. CONSULT WITH AMPHENOL CANADA FOR DETAILS.

#### NOTES:

- MATERIAL: ALL MATERIALS ARE RoHS COMPLIANT PER EU DIRECTIVE 2002/95/EC AND AMENDMENTS
  - SHELL - DIECAST ZINC, NICKEL PLATED
  - CONTACTS - PHOSPHOR BRONZE WITH 1.27µm [50µ"] MIN GOLD OVER 1.27µm [50µ"] MIN NICKEL ON THE MATING AREA AND MATTE TIN OVER NICKEL ON THE CONTACT TAILS.
  - INSERTS - ENGINEERING THERMOPLASTIC, UL94V-0 FLAMMABILITY RATING. REAR INSERTS: BLACK NYLON, FRONT INSERT: CLEAR POLYCARBONATE
  - GASKET - SILICONE RUBBER, CONDUCTIVE, BLACK
  - LED'S - EPOXY LENS, STEEL TAILS WITH TIN PLATING
- ENVIRONMENTAL PERFORMANCE PER IEC 60529 CODE IP67 FOR SEAL BETWEEN MATING AREA AND PCB SIDE OF CONNECTOR. GASKET PROVIDES SEAL TO INSIDE FACE OF PANEL.
- CURRENT RATING: 1.5 AMPERES
- CONTACT RESISTANCE: 30 MILLIOHMS MAXIMUM
- OPERATING TEMPERATURE: -40C TO +105C
- LED CHARACTERISTICS: FORWARD DC CURRENT 25 mA MAX., FORWARD VOLTAGE 2.5V MAX. @ 2 mA
- RECOMMENDED TORQUE FOR PANEL MOUNT SCREWS: 0.45 TO 0.65 N-m (4.0 TO 5.75 IN-LBS) FOR STEEL SCREWS WITH 3.00 (.118) THREAD ENGAGEMENT.
- CUSTOMER TO VERIFY THAT ALL PROCESS CLEANERS ARE COMPATIBLE WITH POLYCARBONATE MATERIAL..
- AVAILABLE MATING AREA COVERS PROVIDE ADDED PROTECTION. CONSULT WITH AMPHENOL CANADA FOR DETAILS.



UNLESS SPECIFIED OTHERWISE	DRAWN	T.KEARSE	OCT20/11
PRIMARY UNITS MILLIMETERS	CHECKED	K. LAMBIE	OCT20/11
SECONDARY INCHES	M.E. APP'D		
REFERENCE IN PARENTHESES	Q.A. APP'D		
GENERAL TOLERANCES	DWG APPR.		
1 DECIMAL PLACE	ENG. REL. NO.	EAR 13977	
2 DECIMAL PLACES ±0.15	REF.		
3 DECIMAL PLACES	THIRD ANGLE PROJECTION		
ANGULAR DEGREES			

**Amphenol Canada Corp.**  
www.amphenolcanada.com

MRJR SERIES RUGGED MODULAR JACK, RIGHT ANGLE, 8 OR 10 POSITION, LED, TAIL LENGTH & THREAD OPTIONS, ROHS COMPLIANT

DWG. NO.	P-MRJR-53XX-X1	REV C
CODE ID NO. 03554	DWG SIZE: X	SCALE: 3:1
SHEET 1 OF 2		

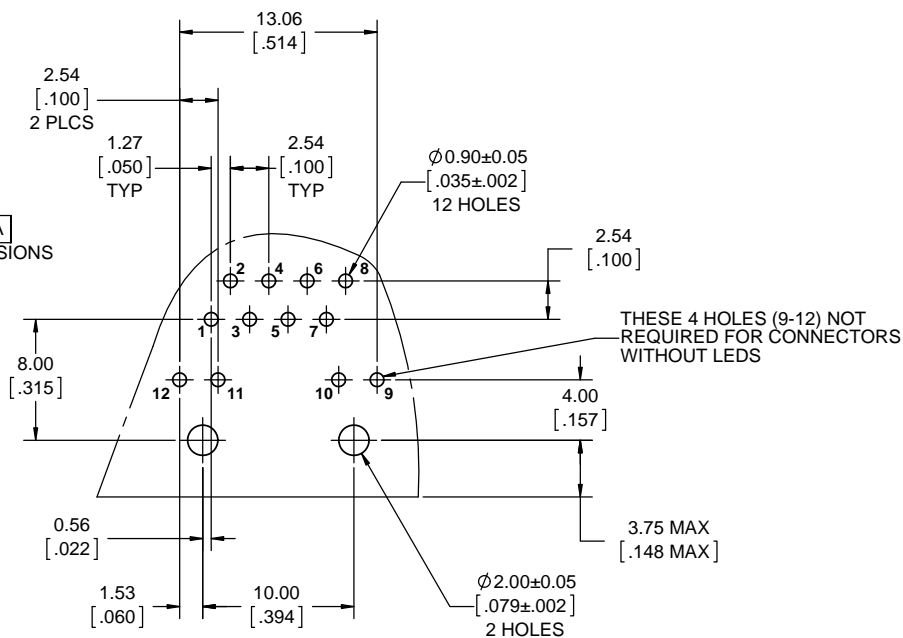
**RECOMMENDED PCB LAYOUT**  
COMPONENT SIDE OF BOARD

REVISIONS			
REV	DESCRIPTION, ECN, EAR NO.	DATE	APP'D
B	PRODUCT DRAWING (EAR 13977)	APR11/12	K.L.
C	PRODUCT DRAWING (EAR 14091)	JUL24/12	K.L.

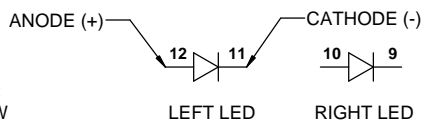
**8 POSITION VIEW**

LOCATE HOLES

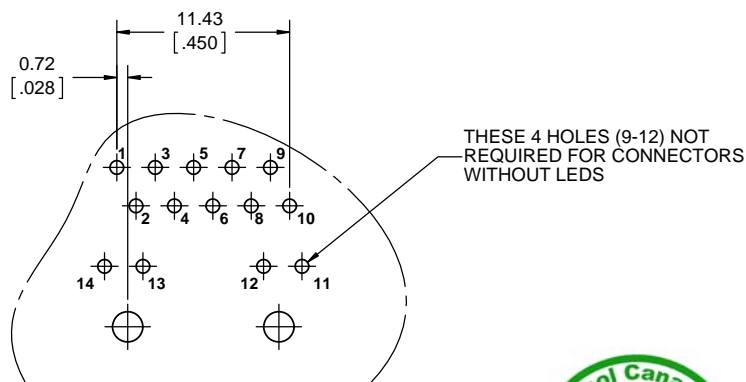
⊕ 0.13 [.005] DIA  
POSITION DIMENSIONS  
ARE BASIC



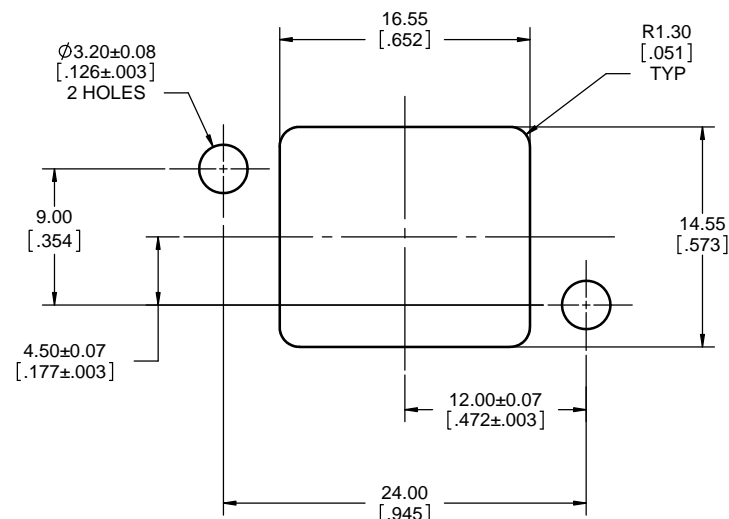
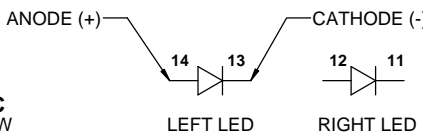
**8 POSITION  
LED SCHEMATIC**  
GREEN OR YELLOW



**10 POSITION VIEW**



**10 POSITION  
LED SCHEMATIC**  
GREEN OR YELLOW



**RECOMMENDED PANEL CUTOUT**  
OUTSIDE PANEL VIEW



UNLESS SPECIFIED OTHERWISE	DRAWN	T.KEARSE	OCT20/11
PRIMARY UNITS MILLIMETERS	CHECKED	K. LAMBIE	OCT20/11
SECONDARY UNITS INCHES	M.E. APP'D		
REFERENCE IN PARENTHESES	Q.A. APP'D		
GENERAL TOLERANCES	DWG APPR.		
1 DECIMAL PLACE	ENG. REL. NO.	EAR 13977	
2 DECIMAL PLACES ±0.15	REF.		
3 DECIMAL PLACES	THIRD ANGLE PROJECTION		
ANGULAR DEGREES	DO NOT SCALE DRAWING		

<b>Amphenol Canada Corp.</b> www.amphenolcanada.com			
MRJR SERIES RUGGED MODULAR JACK, RIGHT ANGLE, 8 OR 10 POSITION, LED, TAIL LENGTH & THREAD OPTIONS, ROHS COMPLIANT			
DWG. NO.	P-MRJR-53XX-X1		REV C
CODE ID NO. 03554	DWG SIZE: X	SCALE: 5:1	SHEET 2 OF 2

# AMEYA360

Components Supply Platform

Authorized Distribution Brand :



Website :

Welcome to visit [www.ameya360.com](http://www.ameya360.com)

Contact Us :

➤ Address :

401 Building No.5, JiuGe Business Center, Lane 2301, Yishan Rd  
Minhang District, Shanghai , China

➤ Sales :

Direct      +86 (21) 6401-6692  
  
Email        amall@ameya360.com  
  
QQ          800077892  
  
Skype        ameyasales1 ameyasales2

➤ Customer Service :

Email        service@ameya360.com

➤ Partnership :

Tel          +86 (21) 64016692-8333  
  
Email        mkt@ameya360.com