



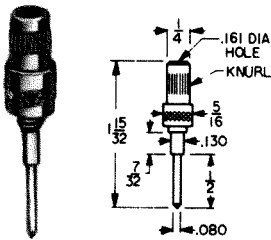
Designers' Choice

TEST TIPS & PLUGS

SPECIFICATIONS: Tips: Brass, Nickel Plate
 Handles: Nylon 6/6, Available in Red or Black
 Rating: 10 Amps AC for 100°C temperature rise, continuous duty

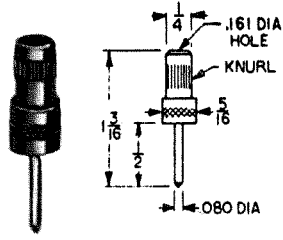
FORCE FIT SOLDERLESS TIPS

SENIOR



CAT. NO. 1690

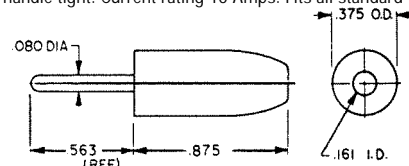
JUNIOR



CAT. NO. 1680

SOLDERLESS - .080 DIA. TIP PLUGS

Fully insulated molded nylon sleeve. Maximum reliability with minimum contact resistance. Recessed metal head eliminates possibility of shock or grounding. Designed for solderless connection of up to 16 gauge stranded wire which fits through handle and tip and is secured by screwing handle tight. Current rating 10 Amps. Fits all standard tip jacks.

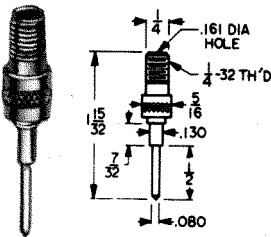


SELECTION OF COLORS

CAT. NO.	COLOR	CAT. NO.	COLOR
6000	WHITE	6003	GREEN
6001	RED	6004	YELLOW
6002	BLACK	6005	BLUE

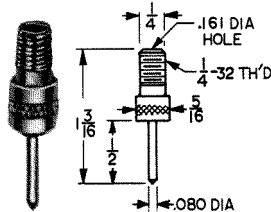
THREADED SOLDERLESS TIP

SENIOR



CAT. NO. 1691

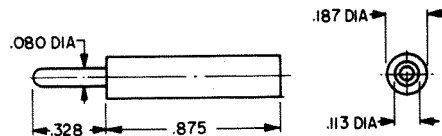
JUNIOR



CAT. NO. 1681

MINIATURE - .080 DIA. TIP PLUGS

Designed for miniaturization where space is critical. Solder lead connection. Maximum reliability with minimum contact resistance. Base of tip is recessed to eliminate shock or grounding. Fits horizontal tip jacks. Current rating: 10 Amps.

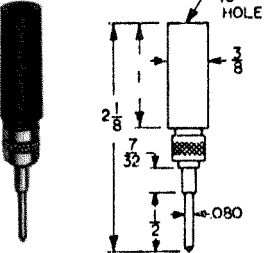


SELECTION OF COLORS

CAT. NO.	COLOR	CAT. NO.	COLOR
6006	WHITE	6009	GREEN
6007	RED	6010	YELLOW
6008	BLACK	6011	BLUE

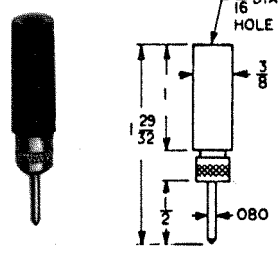
INSULATED SOLDERLESS TIP

SENIOR



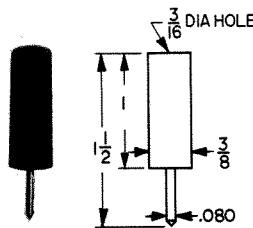
CAT. NO. 1660- RED
 CAT. NO. 1661- BLACK

JUNIOR

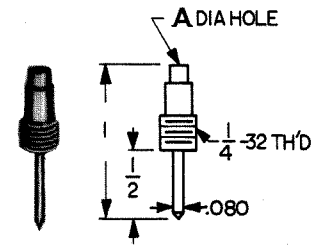


CAT. NO. 1670- RED
 CAT. NO. 1671- BLACK

STREAMLINE TIPS

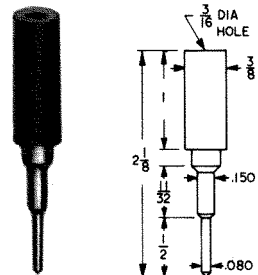


CAT. NO. 1615 - RED
 CAT. NO. 1616 - BLACK



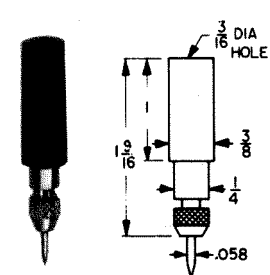
CAT. NO.	A
3022-12	.120
3022-20	.093

HEAVY DUTY



CAT. NO. 3017 - RED
 CAT. NO. 3018 - BLACK
 CAT. NO. 3019 - TIP ONLY

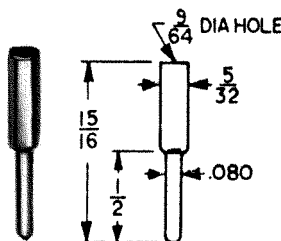
NEEDLE TIPS



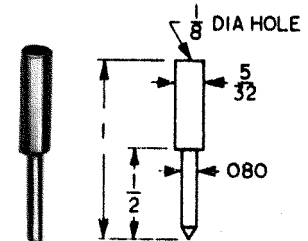
CAT. NO. 3015 - RED
 CAT. NO. 3016 - BLACK
 CAT. NO. 3014 - TIP ONLY

STANDARD PHONE TIPS

Ideal for replacement tip for headset, speaker, or extension cord. Cat. No. 1601 Tip accommodates heavier wire.



CAT. NO. 1600



CAT. NO. 1601

AMEYA360

Components Supply Platform

Authorized Distribution Brand :



Website :

Welcome to visit www.ameya360.com

Contact Us :

➤ Address :

401 Building No.5, JiuGe Business Center, Lane 2301, Yishan Rd
Minhang District, Shanghai , China

➤ Sales :

Direct +86 (21) 6401-6692

Email amall@ameya360.com

QQ 800077892

Skype [ameyasales1](#) [ameyasales2](#)

➤ Customer Service :

Email service@ameya360.com

➤ Partnership :

Tel +86 (21) 64016692-8333

Email mkt@ameya360.com