

DATE

REVISIONS

REV

DRAWING NUMBER
SSF-LXH340LYGID

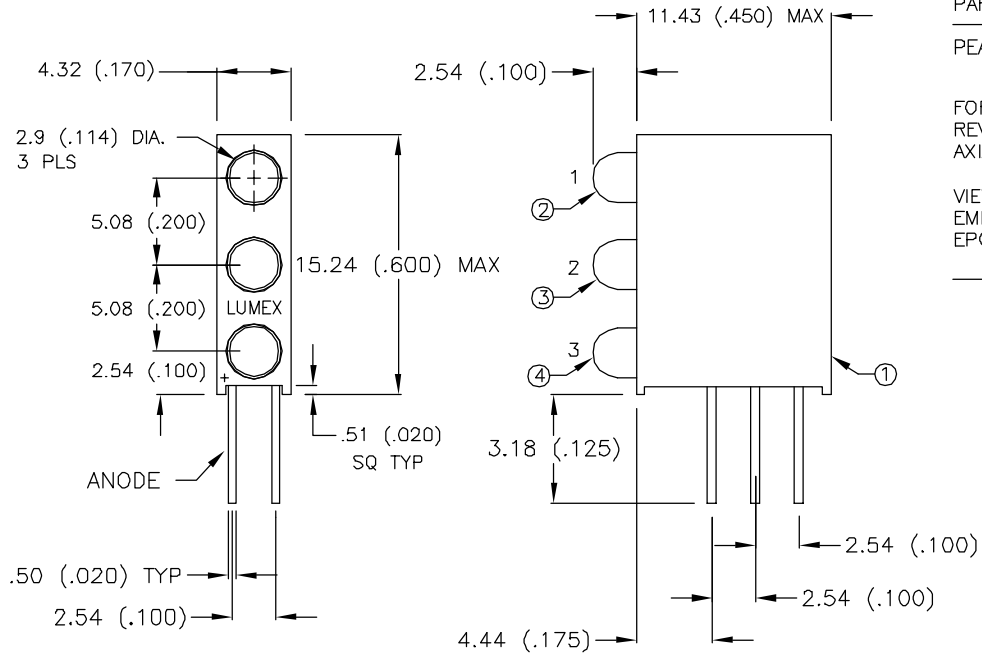
REV

ELECTRO-OPTICAL CHARACTERISTICS $T_A=25^\circ\text{C}$ $I_f=20\text{mA}$

| PARAMETER | MIN | TYP | MAX | UNITS | TEST COND |
|-------------------|-------|---------------------------------|-----|-----------------------|----------------------|
| PEAK WAVELENGTH | POS.1 | 585 (YELLOW) | | nm | |
| | POS.2 | 565 (GREEN) | | nm | |
| | POS.3 | 635 (RED) | | nm | |
| FORWARD VOLTAGE | | 2.1 | 2.8 | V_f | |
| REVERSE VOLTAGE | 5 | | | V_r | $I_r=100\mu\text{A}$ |
| AXIAL INTENSITY | | 20 | | mcd | $I_f=20\text{mA}$ |
| VIEWING ANGLE | 1.5 | | | mcd | $I_f=2\text{mA}$ |
| EMITTED COLOR | | 60 | | $2\times\text{theta}$ | |
| EPOXY LENS FINISH | | POS.1-YEL, POS.2-GRN, POS.3-RED | | | |
| | | ALL COLORS DIFFUSED | | | |

LIMITS OF SAFE OPERATION AT 25°C

| PARAMETER | MAX | UNITS |
|-------------------------|------------|------------|
| PEAK FORWARD CURRENT* | 150 | mA |
| STEADY CURRENT (Y/G/R) | 30/25/30 | mA |
| POWER DISSIPATION | 105 | mW |
| DERATE FROM 25°C | -1.6 | mW/°C |
| OPERATING, STORAGE TEMP | -40 TO +85 | °C |
| LEAD SOLDERING TEMP | +260 | °C |
| 2.0mm FROM BODY | | 3 SEC. MAX |

* $t < 10\mu\text{s}$ 

BILL OF MATERIALS:

- SSH-LXH340 HOLDER. MATERIAL: BLACK NYLON 94V-0.
- SSL-LX3044LYD LED.
- SSL-LX3044LGD LED.
- SSL-LX3044LID LED.

RELIABILITY NOTE

OUR MANY YEARS OF EXPERIENCE DATA ACCUMULATION INDICATE THAT SOLDER HEAT IS A MAJOR CAUSE OF EARLY AND FUTURE FAILURE. PLEASE PAY ATTENTION TO YOUR SOLDERING PROCESS.

LUMEX
OPTO COMPONENTS INC.

290 E. HELLEN ROAD
PALATINE, ILLINOIS 60067
(847) 359-2790

CONFIDENTIAL INFORMATION
THE INFORMATION CONTAINED IN THIS DOCUMENT IS THE PROPERTY OF LUMEX OPTO/COMPONENTS, INC. EXCEPT AS SPECIFICALLY AUTHORIZED IN WRITING BY LUMEX OPTO/COMPONENTS, INC., THE HOLDER OF THIS DOCUMENT SHALL KEEP ALL INFORMATION CONTAINED HEREIN CONFIDENTIAL AND SHALL PROTECT SAME IN WHOLE OR IN PART FROM DISCLOSURE AND DISSEMINATION TO ALL THIRD PARTIES.

DATE: 11-7-96

DWN:

CHK'D:

APPD:

SCALE: N/A

T-3mm LED, RIGHT ANGLE FAULT INDICATOR,
YELLOW/GREEN/RED DIFFUSED, SPECIAL LOW CURRENT SELECTION

PAGE 1 OF 1

DRAWING NUMBER
SSF-LXH340LYGID

REV

AMEYA360

Components Supply Platform

Authorized Distribution Brand :



Website :

Welcome to visit www.ameya360.com

Contact Us :

➤ Address :

401 Building No.5, JiuGe Business Center, Lane 2301, Yishan Rd
Minhang District, Shanghai , China

➤ Sales :

Direct +86 (21) 6401-6692

Email amall@ameya360.com

QQ 800077892

Skype [ameyasales1](#) [ameyasales2](#)

➤ Customer Service :

Email service@ameya360.com

➤ Partnership :

Tel +86 (21) 64016692-8333

Email mkt@ameya360.com