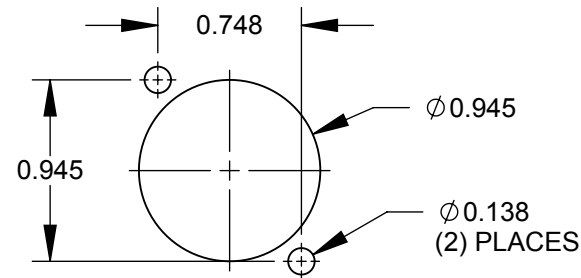
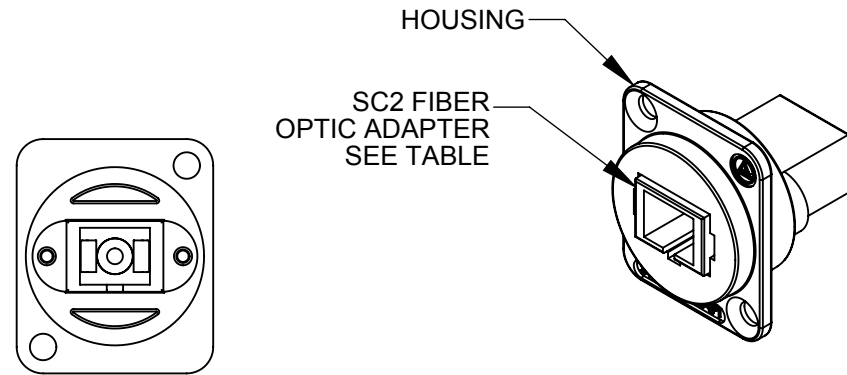


NOTES:

1. INSERTION LOSS: 0.75 dB MAX.
2. OPERATION TEMP: -20°C TO +70°C.
3. PRODUCT COMES WITH DUST CAPS. (NOT SHOWN)
4. MATERIALS:
SLEEVE:
SINGLE-MODE - CERAMIC (ZIRCONIA)
MULTI-MODE - PHOSPHORUS BRONZE
HOUSING - DELRIN, BLACK
ADAPTER - THERMOPLASTIC
ADAPTER MOUNTING CLIPS - STAINLESS STEEL
5. FOR MOUNTING SCREWS TO BE SHIPPED WITH ASSEMBLY AND INDIVIDUAL PACKAGING, ADD SUFFIX -PKG TO PART NUMBER.
6. WHEN MOUNTING ASSEMBLY, USE A SCREW TORQUE OF 10 INCH-POUNDS MAXIMUM.
7. THIS PRODUCT IS RoHS COMPLIANT.



RECOMMENDED
PANEL CUT-OUT

PART NUMBER	SC2 ADAPTER	ADAPTER COLOR
EHSC2	SINGLE-MODE	BLUE
EHSC2M	MULTI-MODE	BEIGE

CUSTOMER DRAWING

					<div>UNLESS OTHERWISE SPECIFIED</div> <div>1. ALL DIMENSIONS IN INCHES</div> <div>- TWO PLACE DECIMALS ±0.02</div> <div>- THREE PLACE DECIMALS ±0.005</div>	THIS DRAWING DESCRIBES A DESIGN CONSIDERED PROPRIETARY IN NATURE, DEVELOPED AND MANUFACTURED BY SWITCHCRAFT INC. AND IS RELEASED ON A CONFIDENTIAL BASIS FOR IDENTIFICATION PURPOSES ONLY.											
						SIZE	WIDTH		MULT		LBS/M		TEMPER				
						FINISH						MATERIAL					
						SPEC No.						SPEC No.					
						FIRST USED ON				SCALE 1:1				<div>Switchcraft®</div>			
						DATE DRAWN	BY	CHKD		APVD							
A	26348		2/27/29	RS		TJK	5/12/08	JGK	RS 5/21/09		TJK 7/16/09		SHEET 1 OF 1				
REV	ECO NUMBER		DATE	BY	APVD	NAME E SERIES SC/SC FIBER OPTIC ADAPTER, RoHS						PART No.					REV
REVISIONS					DO NOT SCALE DRAWING					EHSC2 SERIES						A	

AMEYA360

Components Supply Platform

Authorized Distribution Brand :



Website :

Welcome to visit www.ameya360.com

Contact Us :

➤ Address :

401 Building No.5, JiuGe Business Center, Lane 2301, Yishan Rd
Minhang District, Shanghai , China

➤ Sales :

Direct +86 (21) 6401-6692

Email amall@ameya360.com

QQ 800077892

Skype ameyasales1 ameyasales2

➤ Customer Service :

Email service@ameya360.com

➤ Partnership :

Tel +86 (21) 64016692-8333

Email mkt@ameya360.com