

## Microwave Pulse Power Silicon NPN Transistor

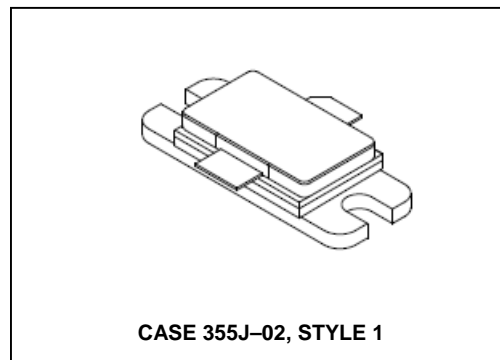
### 500W (peak), 1025–1150MHz

M/A-COM Products  
Released - Rev. 07.07

Designed for 1025–1150 MHz pulse common base amplifier applications such as TCAS, TACAN and Mode-S transmitters.

- Guaranteed performance @ 1090 MHz  
Output power = 500 W peak  
Gain = 8.5 dB min, 9.0 dB (typ.)
- 100% tested for load mismatch at all phase angles with 10:1 VSWR
- Hermetically sealed industry package
- Silicon nitride passivated
- Gold metalized, emitter ballasted for long life and resistance to metal migration
- Internal input and output matching
- Characterized with 10 $\mu$ s, 1% duty cycle pulses

### Product Image



### MAXIMUM RATINGS

Rating	Symbol	Value	Unit
Collector–Emitter Voltage	$V_{CES}$	65	Vdc
Collector–Base Voltage	$V_{CBO}$	65	Vdc
Emitter–Base Voltage	$V_{EBO}$	3.5	Vdc
Collector Current — Peak (1)	$I_C$	29	Adc
Total Device Dissipation @ $T_C = 25^\circ\text{C}$ (1), (2) Derate above $25^\circ\text{C}$	$P_D$	1460 8.3	Watts W/ $^\circ\text{C}$
Storage Temperature Range	$T_{stg}$	–65 to +200	$^\circ\text{C}$
Junction Temperature	$T_J$	200	$^\circ\text{C}$

### THERMAL CHARACTERISTICS

Characteristic	Symbol	Max	Unit
Thermal Resistance, Junction to Case (3)	$R_{\theta JC}$	0.12	$^\circ\text{C/W}$

#### NOTES:

1. Under pulse RF operating conditions.
2. These devices are designed for RF operation. The total device dissipation rating applies only when the devices are operated as pulsed RF amplifiers.
3. Thermal Resistance is determined under specified RF operating conditions by infrared measurement techniques. (Worst case  $\theta_{JC}$  value measured @ 32  $\mu$ s, 2%.)

**Microwave Pulse Power Silicon NPN Transistor**  
**500W (peak), 1025–1150MHz**

 M/A-COM Products  
 Released - Rev. 07.07

**ELECTRICAL CHARACTERISTICS** ( $T_C = 25^\circ\text{C}$  unless otherwise noted.)

Characteristic	Symbol	Min	Typ	Max	Unit
----------------	--------	-----	-----	-----	------

**OFF CHARACTERISTICS**

Collector–Emitter Breakdown Voltage ( $I_C = 60\text{ mAdc}$ , $V_{BE} = 0$ )	$V_{(BR)CES}$	65	—	—	Vdc
Collector–Base Breakdown Voltage ( $I_C = 60\text{ mAdc}$ , $I_E = 0$ )	$V_{(BR)CBO}$	65	—	—	Vdc
Emitter–Base Breakdown Voltage ( $I_E = 10\text{ mAdc}$ , $I_C = 0$ )	$V_{(BR)EBO}$	3.5	—	—	Vdc
Collector Cutoff Current ( $V_{CB} = 36\text{ Vdc}$ , $I_E = 0$ )	$I_{CBO}$	—	—	25	mAdc

**ON CHARACTERISTICS**

DC Current Gain ( $I_C = 5.0\text{ Adc}$ , $V_{CE} = 5.0\text{ Vdc}$ )	$h_{FE}$	20	—	—	—
--	----------	----	---	---	---

**FUNCTIONAL TESTS**

Common–Base Amplifier Power Gain ( $V_{CC} = 50\text{ Vdc}$ , $P_{out} = 500\text{ W Peak}$ , $f = 1090\text{ MHz}$ )	$G_{PB}$	8.5	9.0	—	dB
Collector Efficiency ( $V_{CC} = 50\text{ Vdc}$ , $P_{out} = 500\text{ W Peak}$ , $f = 1090\text{ MHz}$ )	$\eta$	40	45	—	%
Load Mismatch ( $V_{CC} = 50\text{ Vdc}$ , $P_{out} = 500\text{ W Peak}$ , $f = 1090\text{ MHz}$ , $VSWR = 10:1$ All Phase Angles)	$\psi$	No Degradation in Output Power			

## Microwave Pulse Power Silicon NPN Transistor 500W (peak), 1025–1150MHz

M/A-COM Products  
Released - Rev. 07.07

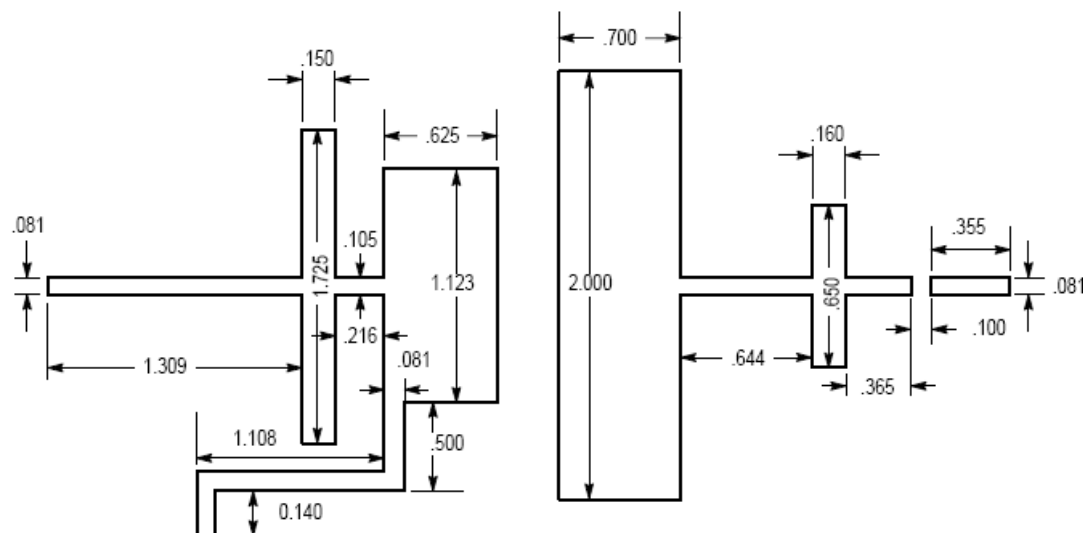
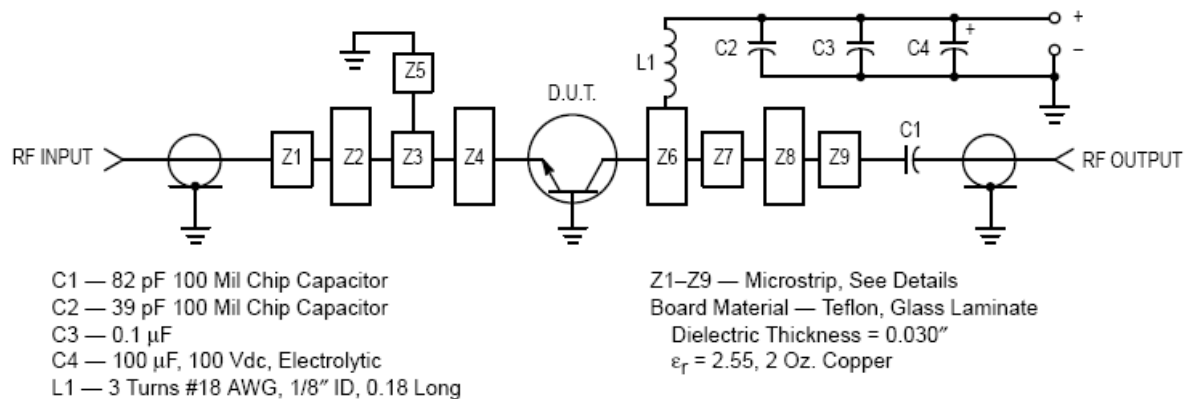


Figure 1. Test Circuit

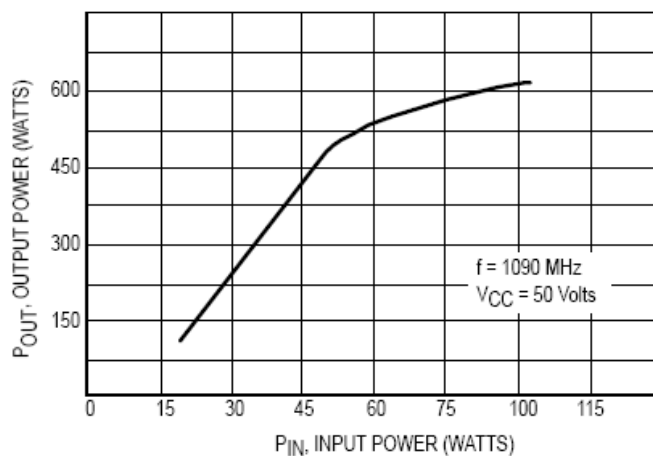
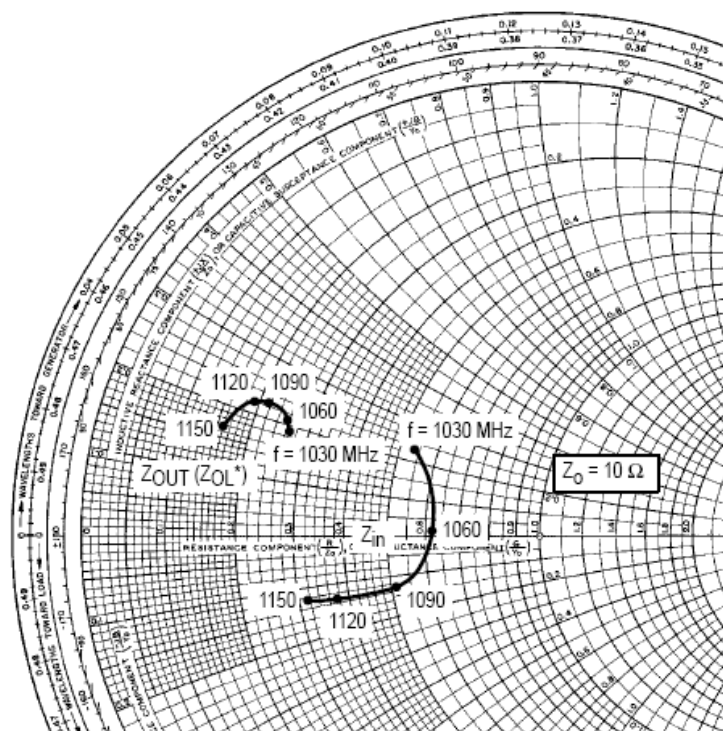


Figure 2. Output Power versus Input Power

Microwave Pulse Power Silicon NPN Transistor  
500W (peak), 1025–1150MHz

M/A-COM Products  
Released - Rev. 07.07



$P_{OUT} = 500 \text{ W Pk}$   $V_{CC} = 50 \text{ V}$

f MHz	$Z_{in}$ OHMS	$Z_{OL}^* (Z_{OUT})$ OHMS
1030	$5.3 + j2.25$	$2.6 + j1.89$
1060	$6.2 + j0.2$	$2.56 + j2.0$
1090	$5.2 - j1.4$	$2.12 + j2.2$
1120	$3.7 - j1.35$	$1.9 + j2.15$
1150	$3.15 - j1.3$	$1.6 + j1.62$

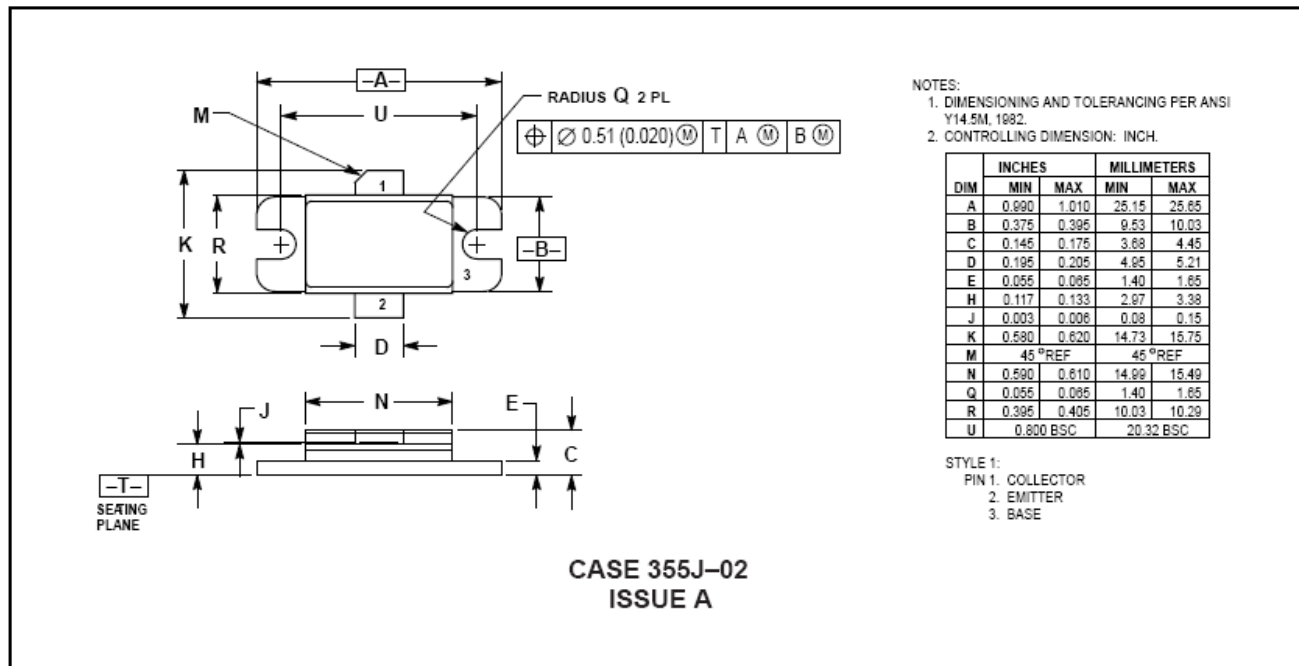
$Z_{OL}^*$  is the conjugate of the optimum load impedance into which the device operates at a given output power voltage and frequency.

Figure 3. Series Equivalent Input/Output Impedances

Microwave Pulse Power Silicon NPN Transistor  
500W (peak), 1025–1150MHz

M/A-COM Products  
Released - Rev. 07.07

## PACKAGE DIMENSIONS



# AMEYA360

Components Supply Platform

Authorized Distribution Brand :



Website :

Welcome to visit [www.ameya360.com](http://www.ameya360.com)

Contact Us :

➤ Address :

401 Building No.5, JiuGe Business Center, Lane 2301, Yishan Rd  
Minhang District, Shanghai , China

➤ Sales :

Direct     +86 (21) 6401-6692  
Email       amall@ameya360.com  
QQ         800077892  
Skype       ameyasales1 ameyasales2

➤ Customer Service :

Email       service@ameya360.com

➤ Partnership :

Tel         +86 (21) 64016692-8333  
Email       mkt@ameya360.com