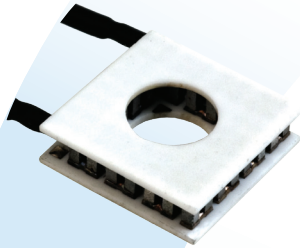


# SH Series SH14,15,06

## Thermoelectric Modules



The SH Series is an annular-style thermoelectric module (TEM). The hot and cold side ceramics have a circular hole in the center to accommodate light protrusion for optics, mechanical fastening or temperature probe.

This product line is available in multiple configurations. Assembled with Bismuth Telluride semiconductor material and thermally conductive Aluminum Oxide ceramics, the SH Series is designed for higher current and larger heat-pumping applications.

### FEATURES

- Center hole
- Precise temperature Control
- Reliable solid state operation
- No sound or vibration
- DC operation
- RoHS compliant

### APPLICATIONS

- Analytical instrumentation
- Clinical diagnostics
- Photonics laser systems
- Industrial instrumentation
- Food & beverage cooling
- Consumer appliances

### PERFORMANCE SPECIFICATIONS

|                           |      |      |
|---------------------------|------|------|
| Hot Side Temperature (°C) | 25   | 50   |
| Qmax (Watts)              | 6.0  | 6.6  |
| Delta Tmax (°C)           | 67   | 75   |
| I <sub>max</sub> (Amps)   | 6.0  | 6.0  |
| V <sub>max</sub> (Volts)  | 1.7  | 1.9  |
| Module Resistance (Ohms)  | 0.27 | 0.30 |

| SUFFIX | THICKNESS<br>(PRIOR TO TINNING) | FLATNESS &<br>PARALLELISM | HOT<br>FACE | COLD<br>FACE | LEAD<br>LENGTH |
|--------|---------------------------------|---------------------------|-------------|--------------|----------------|
| L      | 0.150" ± 0.010"                 | 0.0015" / 0.0015"         | Lapped      | Lapped       | 4.5"           |
| L1     | 0.150" ± 0.001"                 | 0.001" / 0.001"           | Lapped      | Lapped       | 4.5"           |
| L2     | 0.150" ± 0.0005"                | 0.0005" / 0.0005"         | Lapped      | Lapped       | 4.5"           |
| MM     | 0.160" ± 0.010"                 | 0.002" / 0.002"           | Metallized  | Metallized   | 4.5"           |

### SEALING OPTION

| SUFFIX | SEALANT | COLOR | TEMP RANGE    | DESCRIPTION                                  |
|--------|---------|-------|---------------|--|
| RT     | RTV     | White | -60 to 204 °C | Non-corrosive, silicone adhesive sealant     |
| EP     | Epoxy   | Black | -55 to 150 °C | Low density syntactic foam epoxy encapsulant |

### global solutions: local support™

Americas: +1 888.246.9050

Europe: +46.31.420530

Asia: +86.755.2714.1166

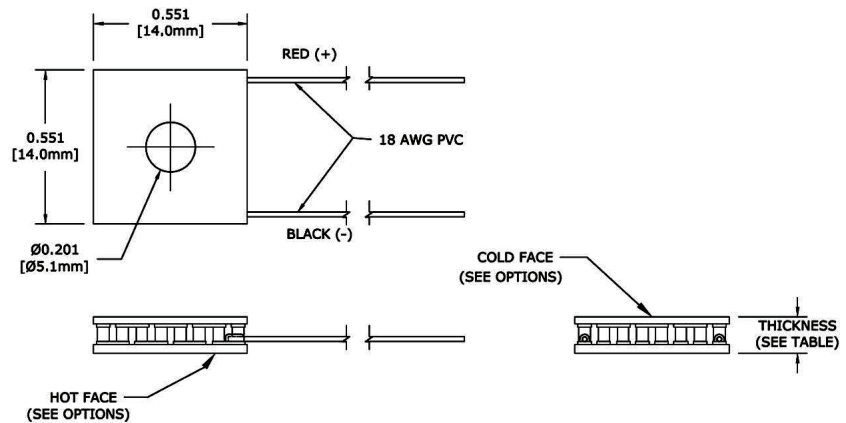
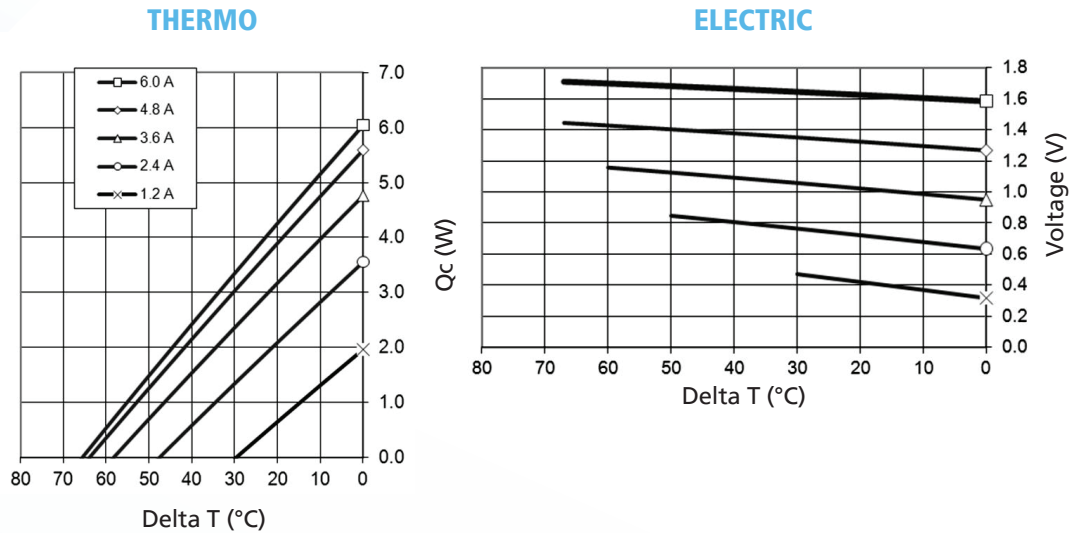
clv.customerpos@lairdtech.com

www.lairdtech.com

# SH Series SH14,15,06

## Thermoelectric Modules

Performance Curves at  $T_h = 25^\circ\text{C}$



Ceramic Material: Alumina ( $\text{Al}_2\text{O}_3$ )  
Solder Construction:  $138^\circ\text{C}$ , Bismuth Tin (BiSn)

### OPERATING TIPS

- Max Operating Temperature:  $80^\circ\text{C}$
- Do not exceed  $I_{\text{max}}$  or  $V_{\text{max}}$  when operating module
- Reference assembly guidelines for recommended installation
- Solder tinning also available on metallized ceramics

THR-DS-SH14,15,06 1111

Any information furnished by Laird Technologies, Inc. and its agents is believed to be accurate and reliable. All specifications are subject to change without notice. Responsibility for the use and application of Laird Technologies materials rests with the end user. Laird Technologies makes no warranties as to the fitness, merchantability, suitability or non-infringement of any Laird Technologies materials or products for any specific or general uses. Laird Technologies shall not be liable for incidental or consequential damages of any kind. All Laird Technologies products are sold pursuant to the Laird Technologies' Terms and Conditions of sale in effect from time to time, a copy of which will be furnished upon request. © Copyright 2011 Laird Technologies, Inc. All Rights Reserved. Laird, Laird Technologies, the Laird Technologies Logo, and other marks are trademarks or registered trademarks of Laird Technologies, Inc. or an affiliate company thereof. Other product or service names may be the property of third parties. Nothing herein provides a license under any Laird Technologies or any third party intellectual property rights.

# AMEYA360

Components Supply Platform

Authorized Distribution Brand :



Website :

Welcome to visit [www.ameya360.com](http://www.ameya360.com)

Contact Us :

➤ Address :

401 Building No.5, JiuGe Business Center, Lane 2301, Yishan Rd  
Minhang District, Shanghai , China

➤ Sales :

Direct      +86 (21) 6401-6692  
  
Email        amall@ameya360.com  
  
QQ          800077892  
  
Skype        ameyasales1 ameyasales2

➤ Customer Service :

Email        service@ameya360.com

➤ Partnership :

Tel          +86 (21) 64016692-8333  
  
Email        mkt@ameya360.com