

# Customer Information Sheet

DRAWING No.: K3600-91

SHEET 2 OF 2

IF IN DOUBT - ASK

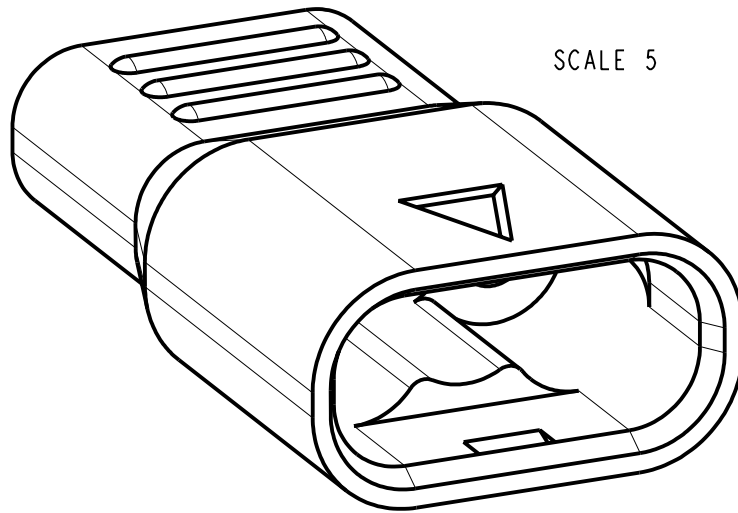
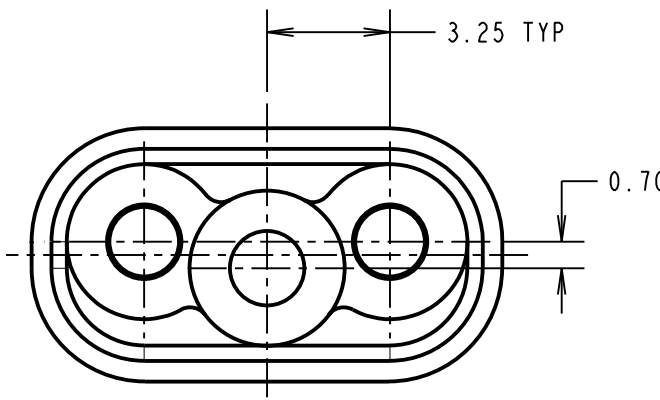
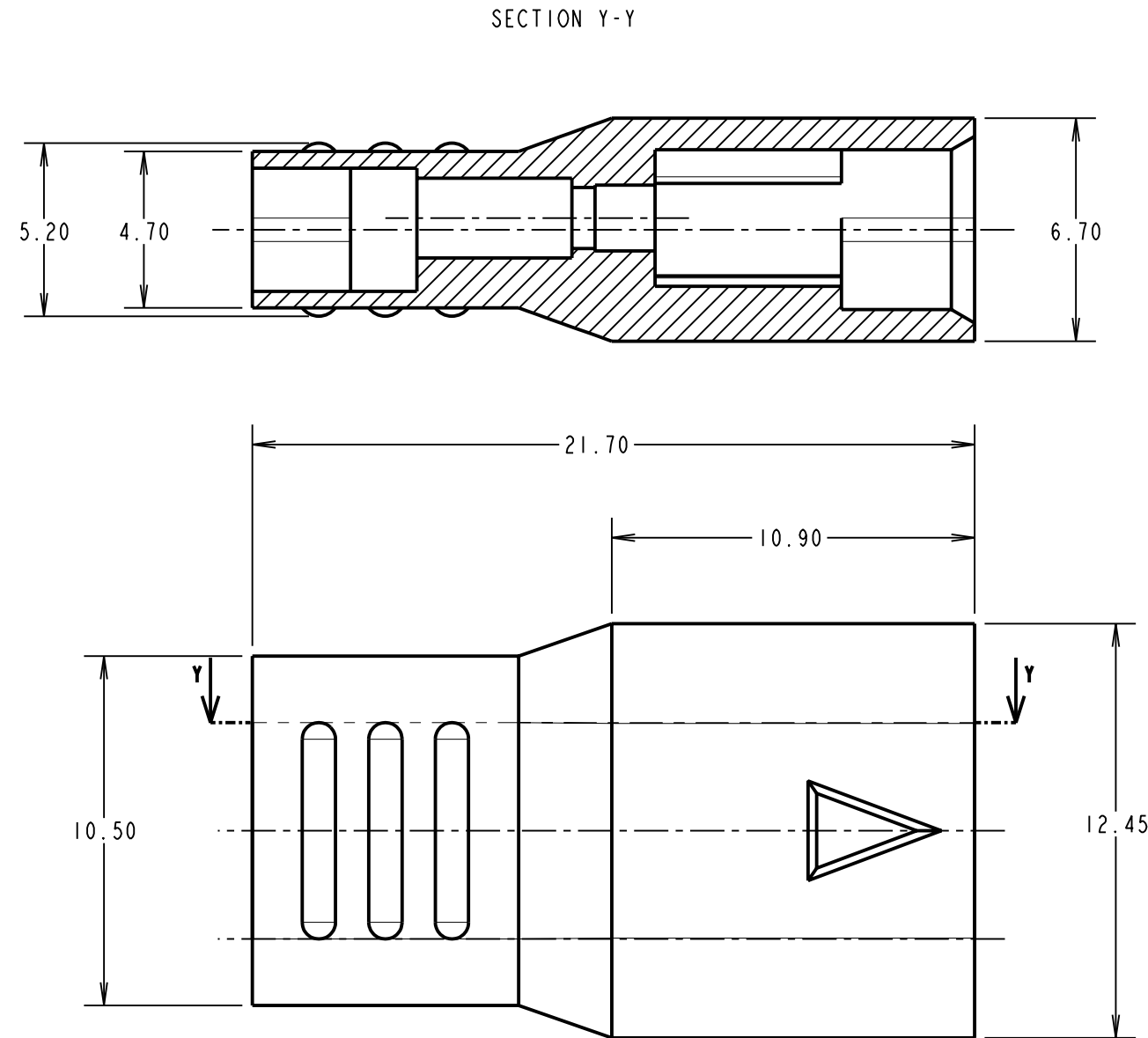
©

NOT TO SCALE

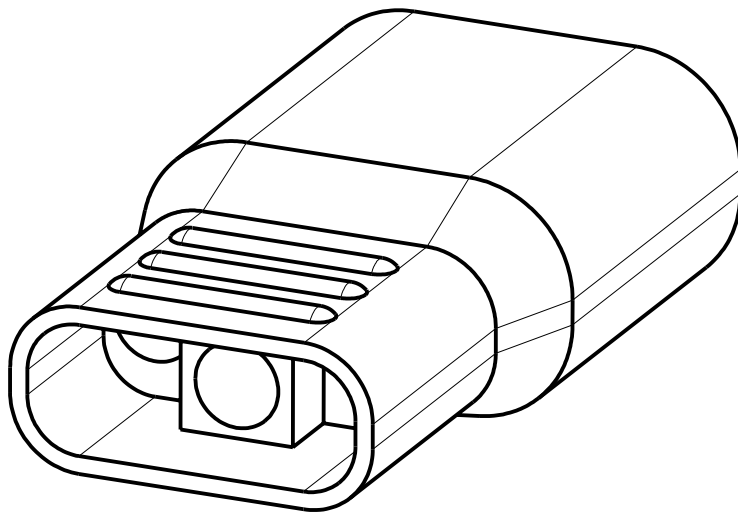
THIRD ANGLE PROJECTION

ALL DIMENSIONS IN mm

SEE COMPONENT SPECIFICATION C034XX FOR ASSEMBLY INSTRUCTIONS AND TECHNICAL DATA



ORDER CODE:  
**K3600-91**  
COLOUR  
91 - GREY



## NOTES:

- FOR COMPLETE SPECIFICATION, SEE COMPONENT SPECIFICATION C034XX (LATEST ISSUE). THE COMPONENT SPECIFICATION ALSO INCLUDES NOTES ON ASSEMBLY METHODS.
- THIS MOULDING CAN BE USED WITH 2-OFF SOLDER-BUCKET CONTACTS K3602-06, OR 2-OFF CRIMP CONTACTS K3606-06 (SEE INSTRUCTION SHEET IS-01). SPECIFICATIONS LISTED HERE APPLY FOR A COMPLETE ASSEMBLY OF MOULDINGS AND CONTACTS.
- ASSEMBLY TOOL ZK3610-00 CAN BE USED TO AID INSERTION AND EXTRACTION OF CONTACTS FROM MOULDING (SEE INSTRUCTION SHEET IS-22).
- THIS MOULDING MATES WITH 2-WAY SOCKET MOULDING K3601-91.
- THIS MOULDING MAY BE BACK-POTTED TO ACHIEVE A PROTECTION RATING OF IP55 (WHEN MATED).
- ALL TOLERANCES ARE  $\pm 0.05$  UNLESS OTHERWISE STATED.

## SPECIFICATIONS:

### ELECTRICAL:

CURRENT RATING @ 25°C = 10A MAX  
CURRENT RATING @ 85°C = 7.5A MAX  
WORKING VOLTAGE = 250V AC/DC  
VOLTAGE PROOF = 750V AC/DC  
CONTACT RESISTANCE (INITIAL) = 10mΩ MAX  
CONTACT RESISTANCE (AFTER CONDITIONING) = 15mΩ MAX  
INSULATION RESISTANCE (INITIAL) = 1,000MΩ @ 500V DC FOR 1 MINUTE  
INSULATION RESISTANCE (AFTER CONDITIONING) = 100MΩ @ 500V DC FOR 1 MINUTE

### MECHANICAL:

DURABILITY = 100 OPERATIONS  
RETENTION FORCE OF CONTACT IN MOULDING (INITIAL) = 20N MIN  
INSERTION FORCE OF CONNECTOR ASSEMBLY = 40N MAX  
WITHDRAWAL FORCE OF CONNECTOR ASSEMBLY = 10N MIN  
CRIMP PULL-OFF OFF FORCE (BS 5G 178) = 142N MIN  
PROTECTION RATING (BS EN 60529) = IP55 (SEE NOTE 5)

### ENVIRONMENTAL:

TEMPERATURE RANGE = -40°C TO +105°C

RA	2	15.06.09	10352
NAME	ISS.	DATE	C/NOTE
APPROVED: R. ADDE			
CHECKED: M. G. PLESTED			
DRAWN: W. J. BOURNE			
CUSTOMER REF.:			
ASSEMBLY DRG:			

**HARWIN**

HARWIN USA  
TEL: 603 893 5376  
FAX: 603 893 5396  
mis@harwin.com

HARWIN Europe (UK)  
TEL: 023 9231 4545  
FAX: 023 9231 4590  
mis@harwin.co.uk

HARWIN Asia  
TEL: +65 6 779 4909  
FAX: +65 6 779 3868  
mis@harwin.com.sg

THIS DRAWING AND ANY INFORMATION OR DESCRIPTIVE MATTER SET OUT HEREON ARE CONFIDENTIAL AND COPYRIGHT PROPERTY OF THE HARWIN GROUP AND MUST NOT BE DISCLOSED, LOANED, COPIED OR USED FOR MANUFACTURING, TENDERING OR FOR ANY OTHER PURPOSE WITHOUT THEIR WRITTEN PERMISSION.

### TOLERANCES

~~X =  $\pm 1$ mm~~  
~~X.X =  $\pm 0.25$ mm~~  
~~X.XX =  $\pm 0.10$ mm~~  
~~X.XXX =  $\pm 0.01$ mm~~  
ANGLES =  $\pm 5^\circ$   
UNLESS STATED

### MATERIAL:

30% GLASS-FILLED POLYESTER  
UL94V-0, GREY

### FINISH:

S/AREA: mm<sup>2</sup>

### TITLE:

POWER CONNECTOR  
2-WAY PIN MOULDING

### DRAWING NUMBER:

**K3600-91**

SHT  
2 OF 2

# AMEYA360

Components Supply Platform

Authorized Distribution Brand :



Website :

Welcome to visit [www.ameya360.com](http://www.ameya360.com)

Contact Us :

➤ Address :

401 Building No.5, JiuGe Business Center, Lane 2301, Yishan Rd  
Minhang District, Shanghai , China

➤ Sales :

Direct +86 (21) 6401-6692

Email [amall@ameya360.com](mailto:amall@ameya360.com)

QQ 800077892

Skype ameyasales1 ameyasales2

➤ Customer Service :

Email [service@ameya360.com](mailto:service@ameya360.com)

➤ Partnership :

Tel +86 (21) 64016692-8333

Email [mkt@ameya360.com](mailto:mkt@ameya360.com)