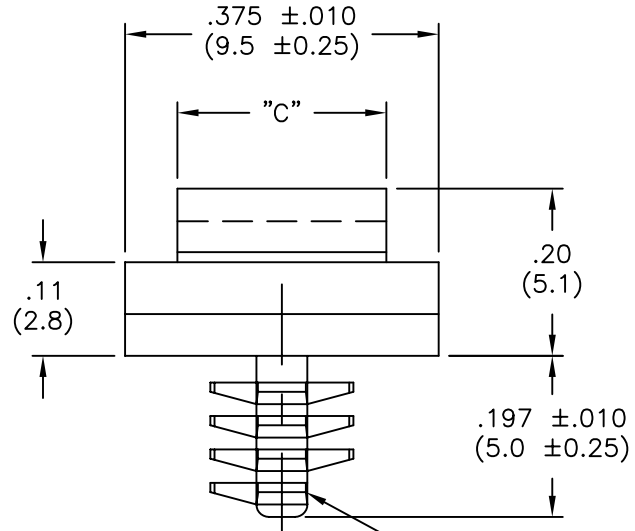
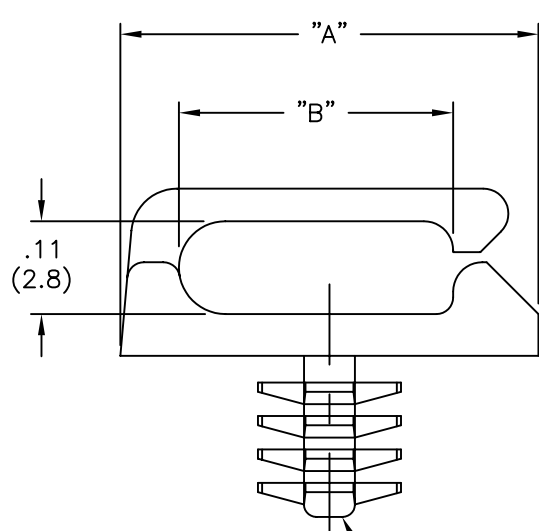


PART NO.	"A"±.010 (±0.25)	"B"±.010 (±0.25)	"C"±.010 (±0.25)
MBHWSSE-1-01	.50 (12.7)	.33 (8.3)	.25 (6.4)
MBHWSSE1-1-01	.67 (17.0)	.49 (12.5)	.315 (8.0)



TO PRESS FIT IN A  $.156 \pm .003$   
( $3.96 \pm 0.08$ ) DIA. HOLE, IN A  
.04 TO .16 (1.00 TO 4.06)  
THICK PANEL.

TYPICAL EJECTOR  
PIN LOCATION  
(SEE NOTE 3.)

NOTES:

1. MATERIAL: NYLON 6/6, RMS-01.  
FLAME RETARDANT NYLON (RMS-19)  
AVAILABLE BY SPECIAL ORDER.
2. COLOR: NATURAL.
3. FIN WILL ONLY APPEAR ON LEFT  
OR RIGHT SIDE, IN THIS VIEW

B	SEE ECN #1354 FOR CHANGES	SK 08.20.07
A	SEE ECN #503 FOR CHANGES	SM 10.25.02
REV	DESCRIPTION	ENGR DATE

TITLE: MICRO-BLIND HOLE, WIRE SADDLE, SIDE ENTRY				DWG IN IN (MM)		FINAL		PRINT TYPE	
TOLERANCES UNLESS NOTED .XX=±.010 .XXX=±.005 FRAC=1/64 ANG=1°		FILE # MBHWSSE	DWN: S.M.	APP:		PART #		CA	
		MAT'L: SEE NOTES	DT: 3/23/01	DT:		SEE TABLE			
		RE: RICHCO, INC.	RICHCO INC. PO BOX 804238, CHICAGO, 60680 (773) 539-4060						

# AMEYA360

## Components Supply Platform

Authorized Distribution Brand :



Website :

Welcome to visit [www.ameya360.com](http://www.ameya360.com)

Contact Us :

➤ Address :

401 Building No.5, JiuGe Business Center, Lane 2301, Yishan Rd  
Minhang District, Shanghai , China

➤ Sales :

Direct +86 (21) 6401-6692

Email [amall@ameya360.com](mailto:amall@ameya360.com)

QQ 800077892

Skype [ameyasales1](#) [ameyasales2](#)

➤ Customer Service :

Email [service@ameya360.com](mailto:service@ameya360.com)

➤ Partnership :

Tel +86 (21) 64016692-8333

Email [mkt@ameya360.com](mailto:mkt@ameya360.com)