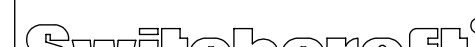


NOTES:

- ALL DIMENSIONS FOR REFERENCE ONLY.
- MATERIALS:  
HOUSING AND END PANELS - ALUMINUM, BLACK ANODIZED  
COMPONENT PANELS - ALUMINUM, BLUE ANODIZED
- LASER ETCHED WHITE TEXT AND ARTWORK.
- THIS PRODUCT IS RoHS COMPLIANT.

CUSTOMER DRAWING

						THIS DRAWING DESCRIBES A DESIGN CONSIDERED PROPRIETARY IN NATURE, DEVELOPED AND MANUFACTURED BY SWITCHCRAFT INC. AND IS RELEASED ON A CONFIDENTIAL BASIS FOR IDENTIFICATION PURPOSES ONLY.											
						UNLESS OTHERWISE SPECIFIED  1. ALL DIMENSIONS IN INCHES  - TWO PLACE DECIMALS     ±0.02  - THREE PLACE DECIMALS   ±0.005	SIZE	*	WIDTH	*	MULT	*	LBS/M	*	TEMPER	*	
							FINISH						*	MATERIAL		*	
							SPEC No.						*	SPEC No.		*	
							FIRST USED ON				*	SCALE				1:1	
							DATE DRAWN	BY	CHKD	TJK	APVD	BHM					
							3/2/10	BHM	7-20-10	8-10-10							
A	26565	7-20-10	BHM	TJK			NAME						PART No.				REV
REV	ECO NUMBER	DATE	BY	APVD			INSTRUMENT DIRECT BOX						SC800CT				A
REVISIONS						DO NOT SCALE DRAWING											

SC800CT Instrument Direct Box  
Audio Specifications



Parameter	Performance	Conditions
Frequency Response	20Hz - 20kHz	+/-0.3dB, ref 1kHz
Total Harmonic Distortion + Noise	< 0.007% < 0.15%	at 1kHz, +4dBu Input, 22kHz Bandwidth at 20Hz, +4dBu Input, 22kHz Bandwidth
Maximum Input Level	+19dBu	at 20Hz with 1% THD+Noise
Input Impedance	> 120kΩ	at 1kHz
Output Impedance	< 20Ω	at 1kHz
Common Mode Rejection Ratio (CMRR)	> 92dB	at 60Hz
Deviation from Linear Phase	< 4° < 1° < 9°	at 20Hz at 1kHz at 20kHz
Voltage Gain	-22dB -42dB	+/-1dB +/-1dB with 20dB pad engaged
Pad Attenuation	20dB	+/-1dB

Notes: All measurements were taken with a 25Ω unbalanced source and measured from the XLR with a 1kΩ balanced load.  
Specifications subject to change without notice.

CUSTOMER DRAWING

SCALE  
1:1

DATE DRAWN  
3/2/10

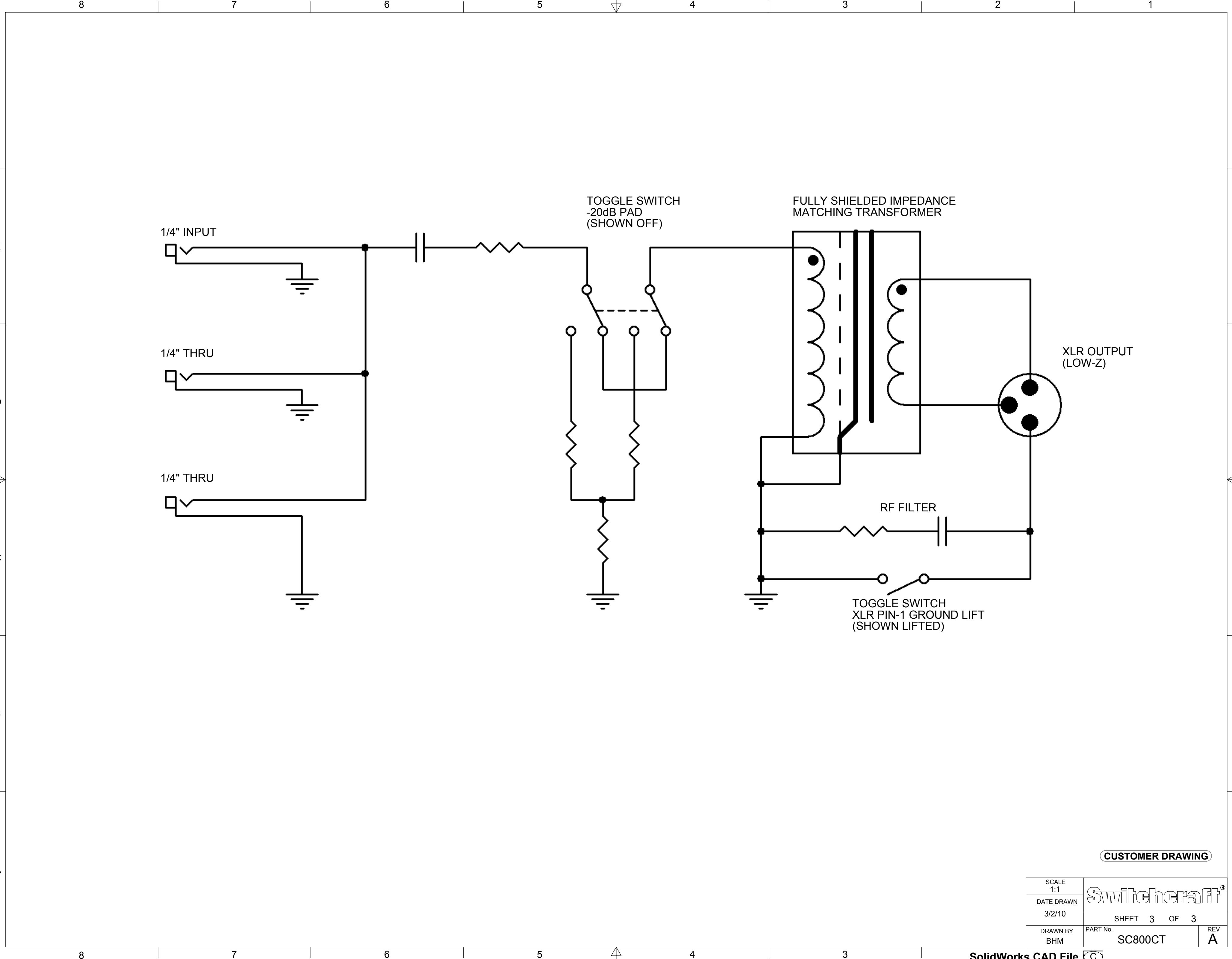
DRAWN BY  
BHM

Switchcraft®

SHEET 2 OF 3

PART No.  
SC800CT

REV  
A



CUSTOMER DRAWING

SCALE 1:1	<b>Switchcraft</b> <sup>®</sup>		
DATE DRAWN 3/2/10			
DRAWN BY BHM	PART No. SC800CT	SHEET 3 OF 3	REV A

Authorized Distribution Brand :



Website :

Welcome to visit [www.ameya360.com](http://www.ameya360.com)

Contact Us :

➤ Address :  
401 Building No.5, JiuGe Business Center, Lane 2301, Yishan Rd  
Minhang District, Shanghai , China

➤ Sales :  
Direct +86 (21) 6401-6692  
Email [amall@ameya360.com](mailto:amall@ameya360.com)  
QQ 800077892  
Skype ameyasales1 ameyasales2

➤ Customer Service :  
Email [service@ameya360.com](mailto:service@ameya360.com)

➤ Partnership :  
Tel +86 (21) 64016692-8333  
Email [mkt@ameya360.com](mailto:mkt@ameya360.com)