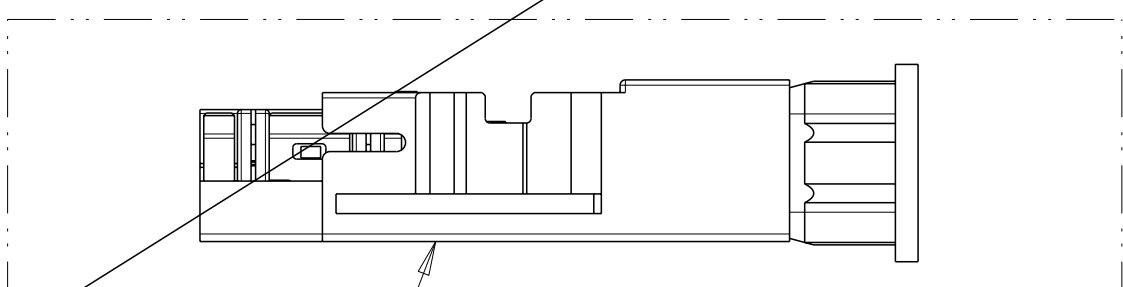
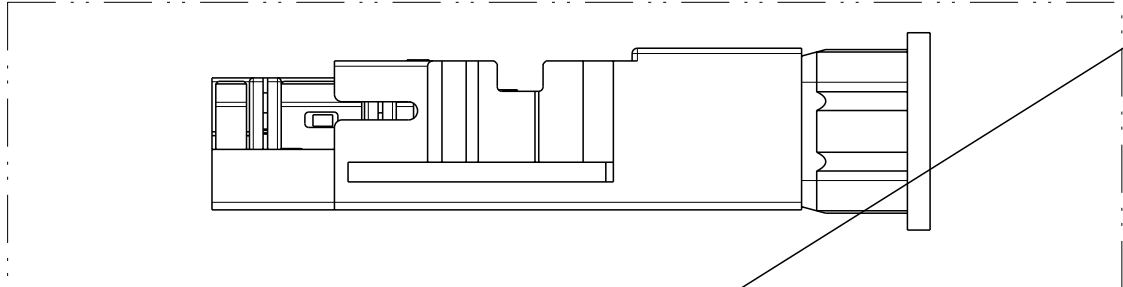
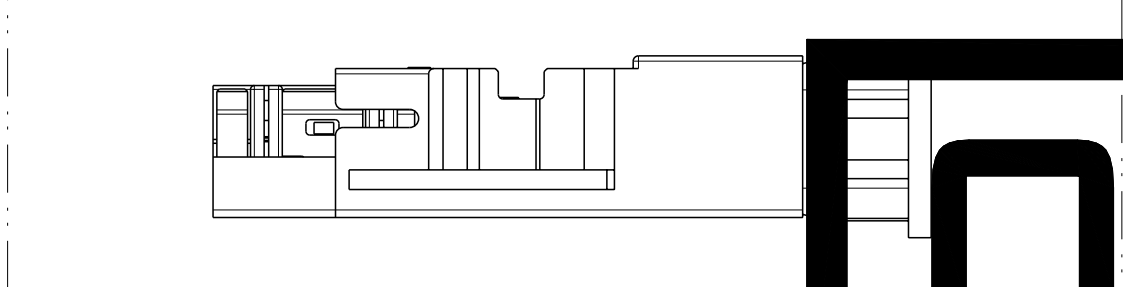
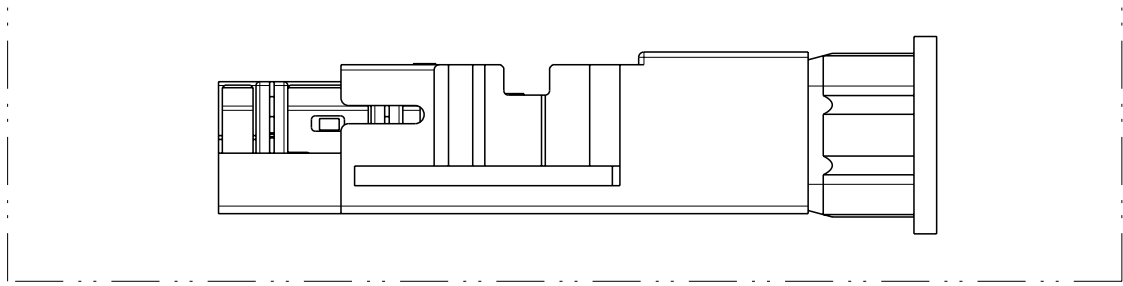
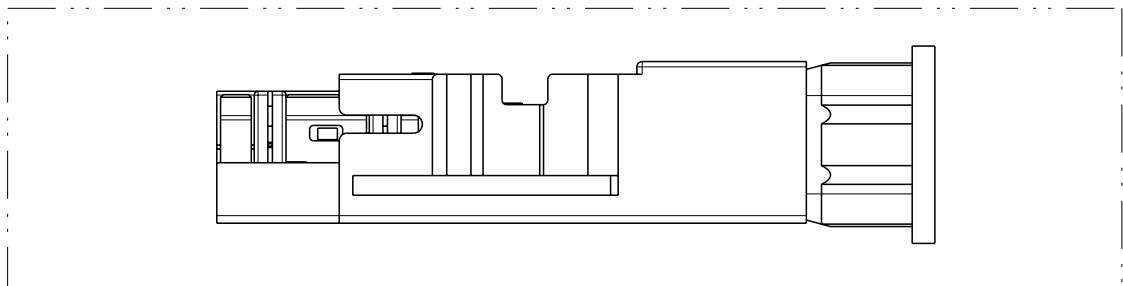
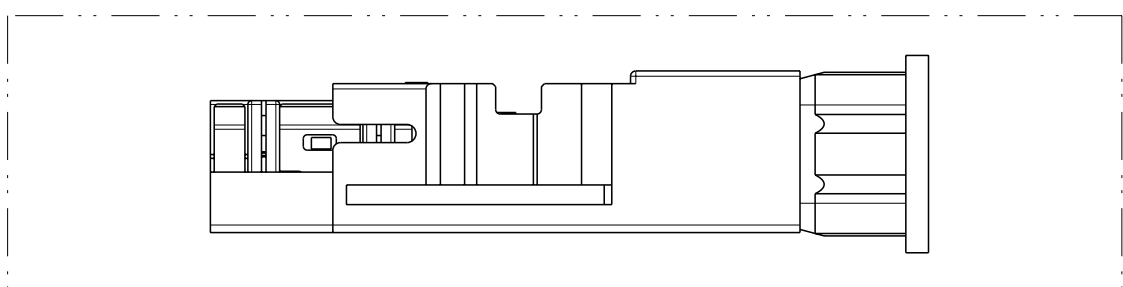
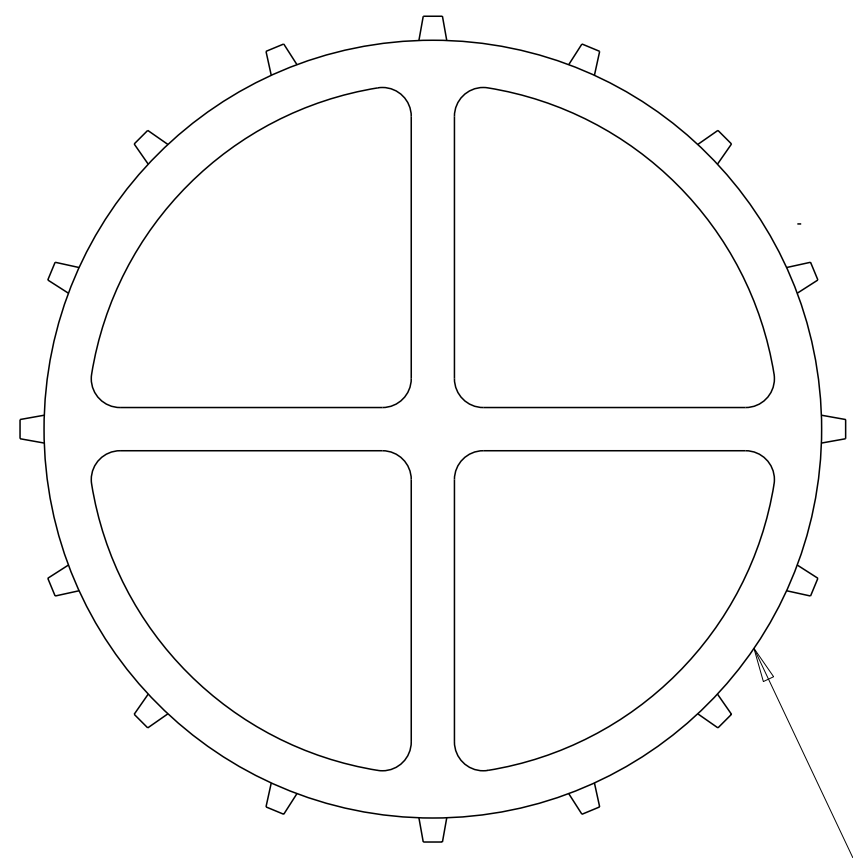


THIS DRAWING IS UNPUBLISHED. RELEASED FOR PUBLICATION .19
 © COPYRIGHT 19 BY AMP INCORPORATED. ALL RIGHTS RESERVED.

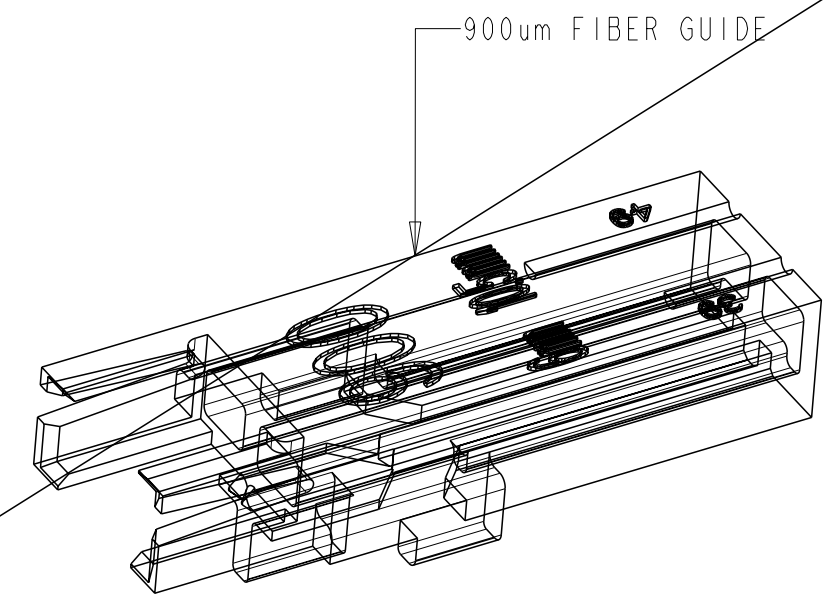
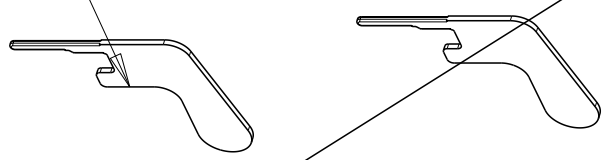
LOC	DIST	REVISIONS					
CE	00	P	LTR	DESCRIPTION	DATE	DWN	APVD
		A		REV PER ECR-06-003731	16FEB2006	BB	DK
		AI		OBSOLETE PER MCO-40026655MCO	15JAN2016	HG	TE



MT-RJ SECURE JACK XG MODULE ASSEMBLY



MT-RJ ACTUATION KEY



900um FIBER GUIDE

SCALE 3:1

ICON WHEEL

OBSOLETE

DESCRIPTION	PART NUMBER
SLATE (K10)	1-6693949-0
ORANGE (K9)	6693949-9
VIOLET (K8)	6693949-8
BROWN (K7)	6693949-7
AQUA (K6)	6693949-6
ROSE (K5)	6693949-5
BLUE (K4)	6693949-4
GREEN (K3)	6693949-3
YELLOW (K2)	6693949-2
RED (K1)	6693949-1

THIS DRAWING IS A CONTROLLED DOCUMENT FOR AMP INCORPORATED. IT IS SUBJECT TO CHANGE AND THE CONTROLLING ENGINEERING ORGANIZATION SHOULD BE CONTACTED FOR THE LATEST REVISION.

DWN	B. BRIGGS	01NOV2005	AMP Incorporated Harrisburg, PA 17105-3608	
CHK	D. KIRSCH	01NOV2005		
APVD	S. BUCHTER	07NOV2005		
PRODUCT SPEC				
APPLICATION SPEC			NAME	MT-RJ SECURE JACK KIT, 6-PACK, XG, 50/125, 900um
WEIGHT			SIZE	A2
CUSTOMER DRAWING			CAGE CODE	00779
			DRAWING NO	6693949
			SCALE	NTS
			SHEET	1 OF 1
			REV	AI

Authorized Distribution Brand :



Website :

Welcome to visit www.ameya360.com

Contact Us :

➤ Address :

401 Building No.5, JiuGe Business Center, Lane 2301, Yishan Rd
Minhang District, Shanghai , China

➤ Sales :

Direct +86 (21) 6401-6692

Email amall@ameya360.com

QQ 800077892

Skype ameyasales1 ameyasales2

➤ Customer Service :

Email service@ameya360.com

➤ Partnership :

Tel +86 (21) 64016692-8333

Email mkt@ameya360.com