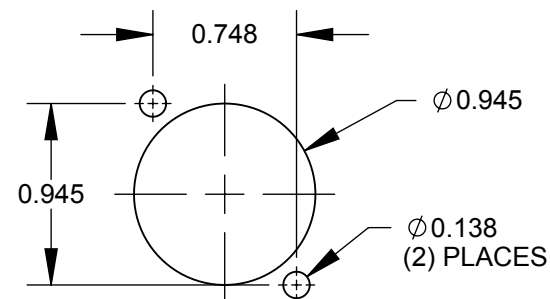
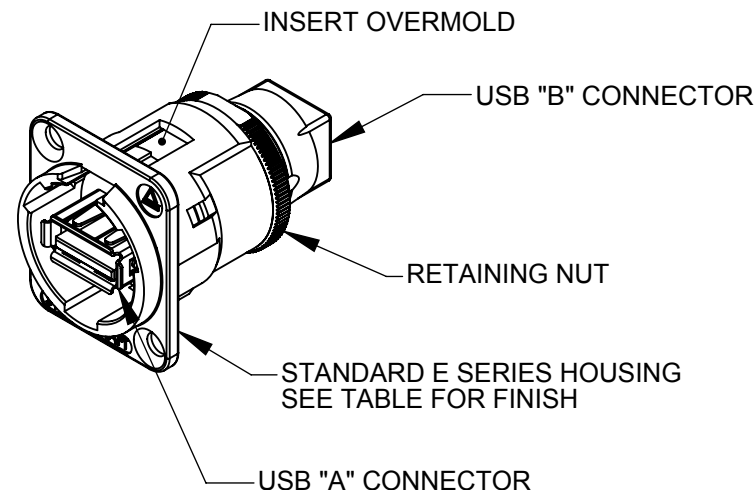
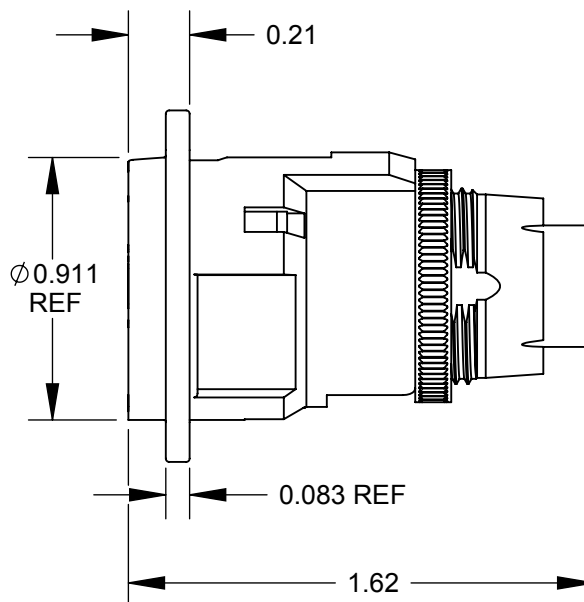


✓ $\phi 0.138$ THRU
 $\phi 0.230 \times 82^\circ$
 (2) PLACES
 REF



RECOMMENDED
 PANEL CUT-OUT

NOTES:

1. MATERIALS:
 INSERT OVERMOLD - THERMOPLASTIC, BLACK
 RETAINING NUT - BRASS, NICKEL PLATED
 HOUSING - ZINC ALLOY

2. THIS PRODUCT IS RoHS COMPLIANT.

PART NUMBER	HOUSING FINISH
EHUSBABX	NICKEL
EHUSBABBX	BLACK CHROME

CUSTOMER DRAWING

★ STAR SYMBOL DENOTES CRITICAL DIMENSION

UNLESS OTHERWISE SPECIFIED
 1. ALL DIMENSIONS IN INCHES
 - TWO PLACE DECIMALS ± 0.01
 - THREE PLACE DECIMALS ± 0.005
 - ANGLES $\pm 1^\circ$

THIS DRAWING DESCRIBES A DESIGN CONSIDERED PROPRIETARY IN NATURE, DEVELOPED AND MANUFACTURED BY SWITCHCRAFT INC. AND IS RELEASED ON A CONFIDENTIAL BASIS FOR IDENTIFICATION PURPOSES ONLY.

SIZE	WIDTH	MULT	LBS/M	TEMPER
FINISH	MATERIAL			
SPEC No.	SPEC No.			
FIRST USED ON		SCALE 1.5:1		
DATE DRAWN	BY	CHKD	APVD	
5/5/09	RS	RS 5/5/09	TJK 7/15/09	
NAME E SERIES CONNECTOR, USB A FEMALE TO B FEMALE, RoHS			PART No. EHUSBAB_X SERIES	REV A
REVISIONS		DO NOT SCALE DRAWING		
A	26076	7/15/06	RS	TJK
REV	ECO NUMBER	DATE	BY	APVD

SolidWorks CAD File



AMEYA360

Components Supply Platform

Authorized Distribution Brand :



Website :

Welcome to visit www.ameya360.com

Contact Us :

➤ Address :

401 Building No.5, JiuGe Business Center, Lane 2301, Yishan Rd
Minhang District, Shanghai , China

➤ Sales :

Direct +86 (21) 6401-6692

Email amall@ameya360.com

QQ 800077892

Skype ameyasales1 ameyasales2

➤ Customer Service :

Email service@ameya360.com

➤ Partnership :

Tel +86 (21) 64016692-8333

Email mkt@ameya360.com