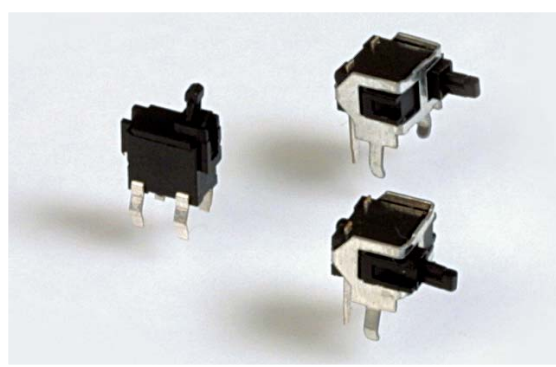


TACT  
SWITCHESNAVIGATION  
SWITCHESPUSHBUTTON  
SWITCHESTOGGLE  
SWITCHESROCKER  
SWITCHESSLIDE  
SWITCHESSNAP-ACTION  
SWITCHESDIP  
SWITCHESKEYLOCK  
SWITCHESROTARY  
SWITCHESDETECTOR  
SWITCHESCAP  
OPTIONS

# SERIES TD SWITCHES

## DETECTOR SWITCHES



### SPECIFICATIONS

Ratings:	As per individual model number
Life Expectancy:	As per individual model number
Contact Resistance:	As per individual model number
Insulation Resistance:	100 M $\Omega$ min.
Dielectric Strength:	1,000 V rms @ sea level
Actuation Force:	As per individual model number
Operating Force:	As per individual model number
Operating Temperature:	-20°C to +85°C

### FEATURES & BENEFITS

- ▶ Long travel
- ▶ Smooth operation

### APPLICATIONS/MARKETS

- ▶ Consumer Electronics
- ▶ Computer / Peripherals



### HOW TO ORDER

SERIES  
**TD**

MODEL NO.



1104

1105 A =  
Actuator Right

1105 B =  
Actuator Left

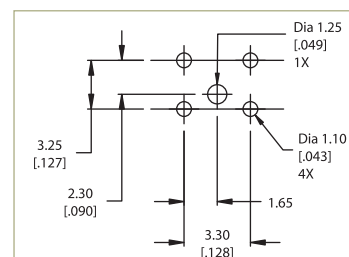
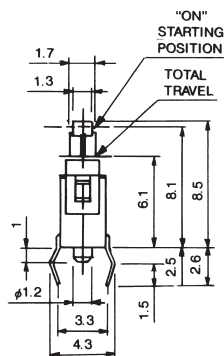
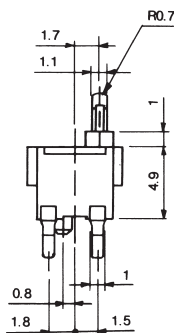


Example Ordering Number  
**TD-1105A**

Specifications subject to change without notice.

**TD**

**1104**



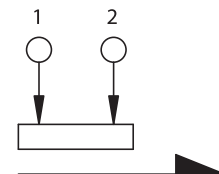
P.C. MOUNTING

### SPECIFICATIONS

Ratings:	100mA @ 30 VDC
Electrical Life:	50,000 cycles typical
Contact Resistance:	1 $\Omega$ max.
Operating Force:	36 gf max.

### MATERIALS

Housing:	4/6 Nylon
Cover:	6/6 Nylon
Actuator:	6/6 Nylon
Contacts:	Silver-plated phosphor bronze
Terminals:	Silver-plated brass

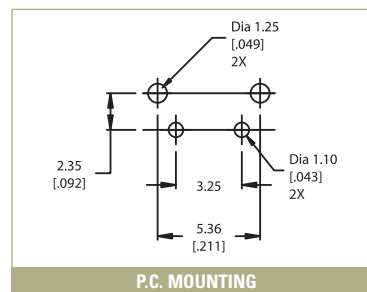
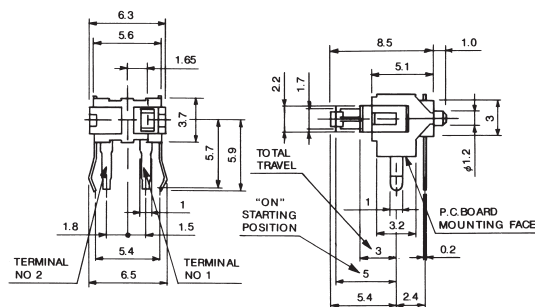


SCHEMATIC



## TD

## 1105 A

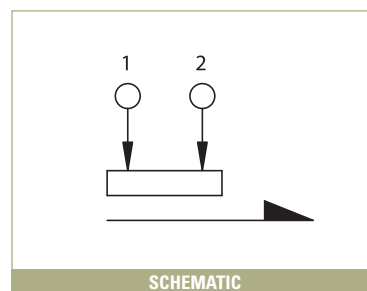


## SPECIFICATIONS

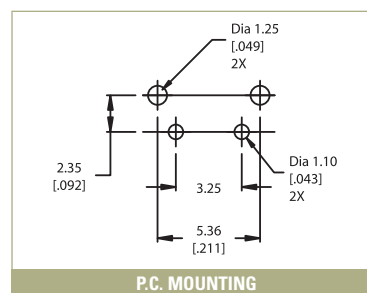
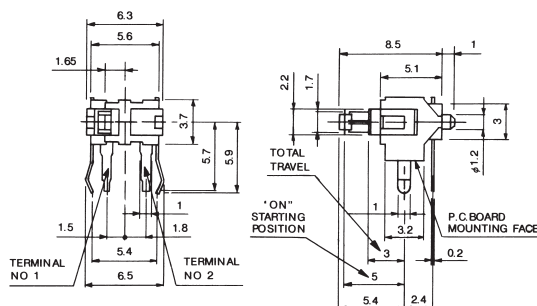
Ratings:	100mA @ 30 VDC
Life Expectancy:	50,000 cycles typical
Contact Resistance:	1 $\Omega$ max.
Operating Force:	36 gf max.

## MATERIALS

Housing:	4/6 Nylon
Cover:	6/6 Nylon
Actuator:	6/6 Nylon
Brackets:	Tin-plated steel
Contacts:	Silver-plated phosphor bronze
Terminals:	Silver-plated brass



## 1105 B

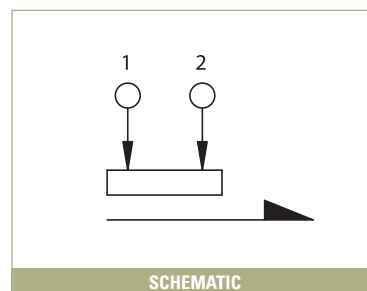


## SPECIFICATIONS

Ratings:	100mA @ 30 VDC
Life Expectancy:	50,000 cycles typical
Contact Resistance:	1 $\Omega$ max.
Operating Force:	36 gf max.

## MATERIALS

Housing:	4/6 Nylon
Cover:	6/6 Nylon
Actuator:	6/6 Nylon
Brackets:	Tin-plated steel
Contacts:	Silver-plated phosphor bronze
Terminals:	Silver-plated brass



# AMEYA360

Components Supply Platform

Authorized Distribution Brand :



Website :

Welcome to visit [www.ameya360.com](http://www.ameya360.com)

Contact Us :

➤ Address :

401 Building No.5, JiuGe Business Center, Lane 2301, Yishan Rd  
Minhang District, Shanghai , China

➤ Sales :

Direct     +86 (21) 6401-6692  
  
Email       amall@ameya360.com  
  
QQ         800077892  
  
Skype       ameyasales1 ameyasales2

➤ Customer Service :

Email       service@ameya360.com

➤ Partnership :

Tel         +86 (21) 64016692-8333  
  
Email       mkt@ameya360.com