

# Wzzard Design and Development Kit Guide



**B+B** SMARTWORX<sup>®</sup>



International Headquarters

B&B Electronics Mfg. Co. Inc.

707 Dayton Road

Ottawa, IL 61350 USA

**Phone** (815) 433-5100 -- **General Fax** (815) 433-5105

Website: [www.bb-elec.com](http://www.bb-elec.com)

[support@bb-elec.com](mailto:support@bb-elec.com)

European Headquarters

B&B Electronics

Westlink Commercial Park

Oranmore, Co. Galway, Ireland

**Phone** +353 91-792444 -- **Fax** +353 91-792445

Website: [www.bb-europe.com](http://www.bb-europe.com)

[techsupport@bb-elec.com](mailto:techsupport@bb-elec.com)

## INTRODUCTION

B&B Electronics' Wzzard Intelligent Sensing Platform is an easy to use, complete wireless sensor connectivity platform featuring edge decision-making. Edge decision-making transcends the traditional SCADA data reporting model and enables more efficient, intelligent, reliable and scalable Internet of Things (IoT) networking. Unlike a traditional SCADA application, where sensors and edge devices are simply passive conduits for raw data, edge decision-making enables a more effective network. Using iterative control limits and Gateway data aggregation to support applications closer to the network edge, the Wzzard brings this intelligence to the network starting at the sensor for more responsive, reliable and efficient networks.

The Wzzard platform's technologies, protocols and hardware work together to reduce the expertise and time it takes for integrators to develop scalable IoT connectivity solutions. They include:

- B&B's Wzzard Intelligent Edge Nodes, which connect to industry-standard sensors via analog, digital or thermocouple connections.
- SmartMeshIP wireless sensing technology, which enables auto-forming, self-healing, self-sustaining networks that are also highly scalable.
- MQTT – a simple messaging transport protocol for M2M/IoT applications over wireless networks.
- B&B's intelligent Spectre cellular router, which serves as the Gateway connecting equipment and devices to the Internet or Intranet over either wired Ethernet or wireless cellular connections.

Use the Spectre router and Wzzard device(s) to connect to any Internet of Things Platform. There you can visualise the data generated by any Wzzard connected sensors.

## THE DEVELOPMENT KIT



Figure 1. Wzzard Development Kit

B&B has preselected the contents of the design and development kits. One provides cellular and Ethernet network connections. The other provides an Ethernet network connection. The kits include a Spectre Network Gateway, and M12 cable and (4) Intelligent Edge Nodes. (Additional Nodes may be purchased to build a larger network). The Nodes provide the sensor interface connection to all of the options provided by the Wzzard system; analog input, digital input, integrated accelerometer and thermocouple input. All Nodes also contain an integrated temperature sensor. Nodes have multiple cabling options: conduit fitting and M12 connections. Additionally, two of the Nodes are supplied with external antennas and two with internal antennas, allowing you to test for range with both options. Kit contents are described below:

| WSKIT4BE Kit Contents | Description   |
|-----------------------|---|
| ERT351                | SpectreRT Router with Power supply and 1 Antenna                    |
| WSD2CTJ               | Node: 2 Thermocouple; J-type, Conduit fitting; External Antenna     |
| WSD1XV0               | Node: Integrated Accelerometer/Temperature; Internal Antenna        |
| WSD2MA2               | Node: Analog 2-Input; 1 Output; External Antenna; M12 connector     |
| WSD1CD2               | Node: Digital 2-Input; 2 Outputs; Internal Antenna; Conduit fitting |
| 520-10256-00          | Accessory M12 Sensor inter-connect cable                            |
| WSKIT4BC Kit Contents | Description   |
| RT3G-350              | Spectre3G Cellular Router with Power Supply and 3 Antenna           |
| WSD1CTJ               | Node: 2 Thermocouple; J-type, Conduit fitting; Internal Antenna     |
| WSD2XV0               | Node: Integrated Accelerometer/Temperature External Antenna         |
| WSD1CA2               | Node: Analog 2-Input, 1 Output ; Internal Antenna; Conduit fitting  |
| WSD2MD2               | Node: Digital 2-Input 2 Outputs; External Antenna; M12 connector    |
| 520-10256-00          | Accessory M12 Sensor inter-connect cable                            |

Documents included within the kit include:

- SmartMeshIP Quick Start Guide
- Network Gateway Quick Start Guide
- Intelligent Edge Node User Manual
- Network Gateway User Manual
- Wizard Bluetooth APP User Manual
- MQTT Topics and JSON Data Format
- Network Planning and Installation Application Note

The Wzzard Design and Development Kits come in an enclosure. The contents of the package are shown below:



Figure 2. Package Contents

The package allows you to repackage the contents. By simply removing the middle foam section and removing the foam inserts, Nodes and Gateways can be easily repackaged. Accessories can be placed within the Gateway box. See below:



Figure 3. Repackaging the Development Kit

To set up the Wzzard system, follow the instructions in the quick start guides for the Network Gateway and the Intelligent Edge Nodes. These guides are included in the development kit.

You will configure the Edge Nodes with a handheld device application. Refer to the Intelligent Edge Node quick start guide for further details and the App configuration manual for detailed set up.

Your handheld device must be compatible with Bluetooth LE 4.0 in order to connect to the Edge Nodes.

## SET UP GUIDELINES

As a first step, follow the instructions on the Network Gateway and Edge Nodes quick start guides contained within the kit. We recommend that the Gateway be configured first. Below is a set of guidelines that can be followed to set up and test the Wzzard wireless network.

While a Wzzard network is self-forming, self-managing and self-optimizing, there are a few simple, but critical, pieces that you must include at the planning stage before deploying a Wzzard network. If these simple steps are followed and verified after installation, the vast majority of deployments will be successful and will result in reliable networks from which the end users will obtain value from Day One.

The key to planning a quality Wzzard network is to provide the Wzzard Network Gateway with the building blocks it needs to build a robust network. It is absolutely critical that each Edge Node should have enough good neighbors. That means that each Edge Node must be able to communicate with as many other Nodes as possible. As a bare minimum guideline, each Node should be within range of at least three (3) devices. Placing Nodes within range of only one other device along a maximally spaced string will result in a fragile network that is prone to Node resets and data loss.

The first hop Nodes are the devices that will be placed within range of the Network Gateway Node, and within range of each other. As a bare minimum, at least 3 devices in the network should be placed within range of the Gateway.

Range performance of a wireless device is affected by choices made during hardware integration (e.g. antenna choice), and even more by choices made during installation. Device placement can change the effective range by orders of magnitude. At one end of the spectrum, devices placed on elevated poles or towers with clear line of sight to other Nodes in the network may have a range of 1000m or more. At the other end, devices placed on the ground or next to large metal objects may have an effective range of 10m or less. The most accurate way to estimate range is to evaluate range in a real environment using the same placement methods as will be used in the final installation. That being said, it is convenient to use estimates (e.g. based on transmit power and receive sensitivity) as a starting point. To begin with, we recommend that customers plan on their devices working at a spacing of 50m for Nodes with internal antennas or 100m for Nodes with external antenna for a typical indoor application. These numbers can be doubled to 100m for internal antennas and 200m for external antennas in a typical outdoor application. Analysis of the first of several 'typical' deployments can guide the typical range number up or down.

Here are some best practices for deploying Edge Nodes:

- It is better to place a device at its final location and then have it join the network than to form your network ahead of time and subsequently scatter Nodes around the site
- Guarantee that the device hardware is working before it is installed. This can be done by pushing the configuration button and checking the status LED. A single blink will occur if Node is active
- Install the Gateway first and then devices at the 1st hop and so on
- If you have pre-planned for each Node to have multiple neighbors, it is not necessary to wait for a Node to join before proceeding to the installation of the next Node. It is more important to verify that each device is on, and then to verify that all devices have joined at the Gateway. verify that Nodes have joined to the Gateway by checking the status LED. The status LED still stop blinking when the Node has successfully joined the network.
- It is better not to install devices very close to ground. It is preferable to install them at least 1m above ground.
- It is better to place devices away from any flat metal objects. (At least 12cm away if possible)

To join the network, the Node must be configured with the correct Network ID and Join Key that bind the device to the network. These parameters are persistent and should be set up once prior to installation. Refer to quick start guide for programming information.

A Node's Network ID must match the Network ID of the Gateway of the intended network. If multiple networks are operating on the site, additional care should be taken to ensure that the Nodes' Network IDs are set correctly. Similarly, if a Node moves from one location to another in the deployment space, it may leave its current Network ID and may not be able to rejoin. Nodes use a Join Key to encrypt the initial join request when joining a network. If the Join Key used by the Node does not match the Node's Join Key configured on the Gateway, the Gateway will not be able to decrypt the join message and will not allow the Node to join the network. For ease of use, we recommend using a single deployment-specific Join Key shared by all Nodes but unique to the customer so as to still disallow malicious devices from joining the network. This means that to join a network, a Node need only be configured with the secure common Join Key

## PLATFORM CONNECTION

The Wzzard development system is designed to interface with any public or private based platform. The hosted platform or PaaS requires an integrated MQTT Broker and a JSON data parser in order to communicate with Wzzard. Refer to the Wzzard system MQTT and JSON interface specification document for the information required to modify a platform to interface with the Wzzard system.

Your Wzzard design and development kit is ready to connect to SeeControl right out of the box. SeeControl provides software-as-a-service tools that make it easy to connect, analyse, control and manage remote products, things and assets. SeeControl provides turnkey apps and solution templates, a huge library of existing protocol/vendor device adapters, optional wireless connections from major global data networks, light ERP modules and business management tools to scale your connected service. It's everything you need to create revenue from connected smart services, more quickly and more economically than with any other approach. You can use SeeControl's multi-tenant cloud, or your cloud of choice, or set up the platform in-house. As part of the kit you receive one year access to the SeeControl platform to collect, monitor and visualize the sensor data from the development kit. Additionally, you can receive alarms, and reports. 30-day storage for sensor data is also provided. Below is an example of the SeeControl Wzzard application page.

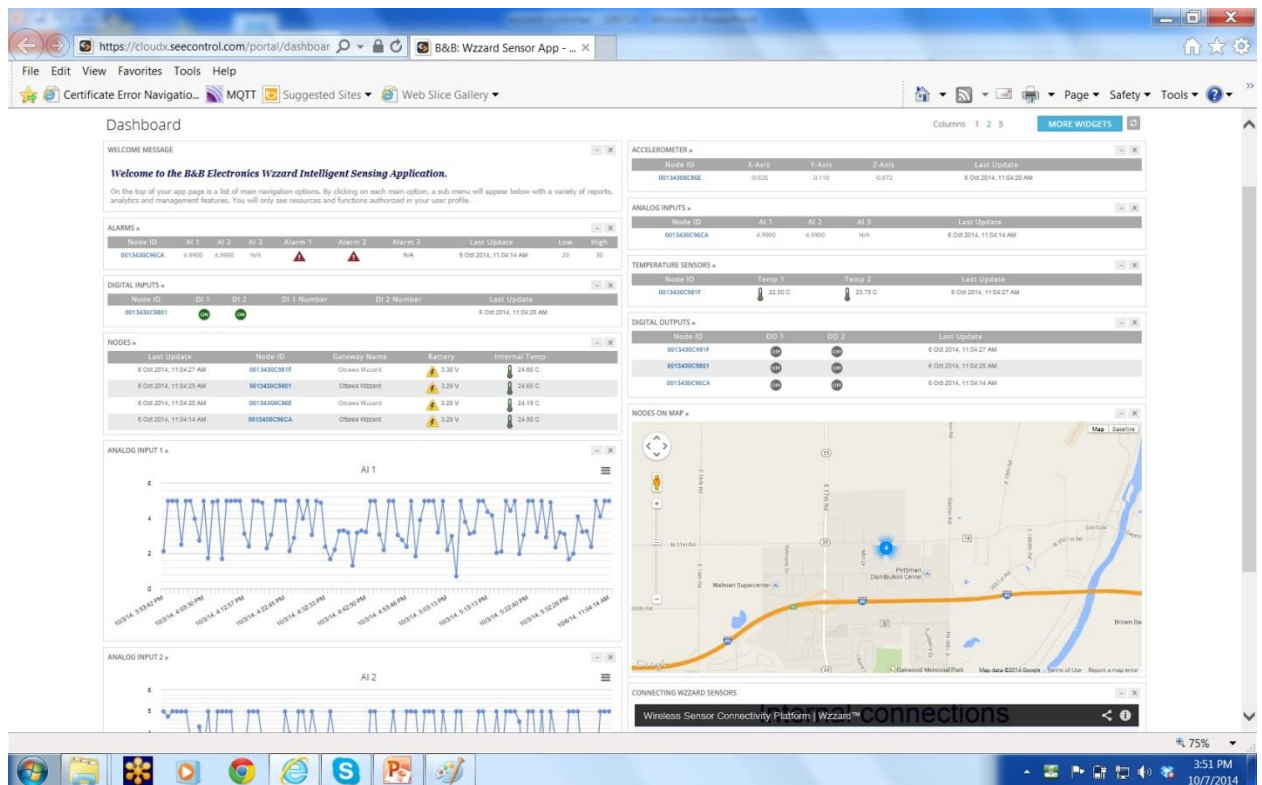


Figure 4. SeeControl Sample Page

To activate your SeeControl account, contact B&B technical support.

### USA

Phone: 1-800-346-3119 (Monday-Friday, 7am-7pm CST)  
 Fax: 815-433-5109  
 Email: support@bb-elec.com

### Ireland

Phone: +353 91 792444  
 Fax: +353 91 792445  
 Email: techsupport@bb-elec.com

All we will need to activate your account is your contact information and the serial numbers from the Wizzard development kit label that is on the outside of the box. B&B technical support will provide you with a user login and password for your account. A separate login will be required for each Wizzard systems.

Once the account is activated, you will need to program into the network Gateway parameter to access the system. Parameters are entered on the IoT Gateway Settings Page:



IoT Gateway Settings

**Network ID**  
1212 The SmartMesh IP network identifier (1 - 65534).

**Join Key**  
445553544E4554574F524E The SmartMesh IP common join key (32 hexadecimal digits).

**MQTT Broker Enable**  
false Enable the local MQTT broker.

**MQTT Broker Port**  
1883 The local MQTT broker TCP port number (1 - 65535).

**MQTT Bridge Enable**  
false Enable bridging to a remote MQTT broker.

**MQTT Bridge Address**  
50.97.204.8 The remote MQTT broker address.

**MQTT Bridge Port**  
1833 The remote MQTT broker TCP port number (1 - 65535).

**MQTT Bridge User**  
The user name for the remote MQTT broker.

**MQTT Bridge Password**  
The password for the remote MQTT broker.

**MQTT Bridge Client Identifier**  
The client identifier for the remote MQTT broker.

Save Restore

Figure 5. MQTT Settings for SeeControl

**Use these settings to connect to SeeControl:**

- The MQTT Bridge must be enabled.
- The MQTT Bridge Address must be: 50.97.204.8
- The MQTT Bridge port must be: 1883
- The MQTT Bridge User should be blank.
- The MQTT Bridge Password should be blank.
- The MQTT Bridge Client Identifier should be set to a unique value for each router.

Validate that the system is connected.

Technical documentation and manuals are provided within the kit or can be found on the [bb-smartsensing.com](http://bb-smartsensing.com) website.

# AMEYA360

## Components Supply Platform

### Authorized Distribution Brand :



### Website :

Welcome to visit [www.ameya360.com](http://www.ameya360.com)

### Contact Us :

#### ➤ Address :

401 Building No.5, JiuGe Business Center, Lane 2301, Yishan Rd  
Minhang District, Shanghai , China

#### ➤ Sales :

Direct +86 (21) 6401-6692

Email [amall@ameya360.com](mailto:amall@ameya360.com)

QQ 800077892

Skype ameyasales1 ameyasales2

#### ➤ Customer Service :

Email [service@ameya360.com](mailto:service@ameya360.com)

#### ➤ Partnership :

Tel +86 (21) 64016692-8333

Email [mkt@ameya360.com](mailto:mkt@ameya360.com)