

ConnectPort[®] X2

XBee[®] to IP Gateways

Customizable, low-cost XBee to Ethernet gateways offer easy IP networking of RF devices and sensor networks.



Overview

ConnectPort X2 is a small XBee to Ethernet gateway that provides low-cost IP networking of RF devices and sensor networks. Featuring an easy development environment, ConnectPort X2 enables custom applications to run locally while interfacing across existing Ethernet networks for WAN connectivity to the internet.

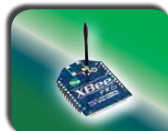
ConnectPort X2 products feature an end-to-end development environment based on local customization via Digi Device CloudSM, allowing for rapid M2M-specific application development on the industry standard Python scripting engine. Digi ESPTM provides an IDE featuring device detection, debugging, compiling and downloading of Device Cloud Dia/Python code to Digi gateways.

Device Cloud provides a platform for the design, testing and deployment of M2M solutions. Using Device Cloud, developers are able to seamlessly integrate remote devices and device data into business applications and processes.

Related Products



Digi Remote Manager



Modules



Adapters



Dev Kits

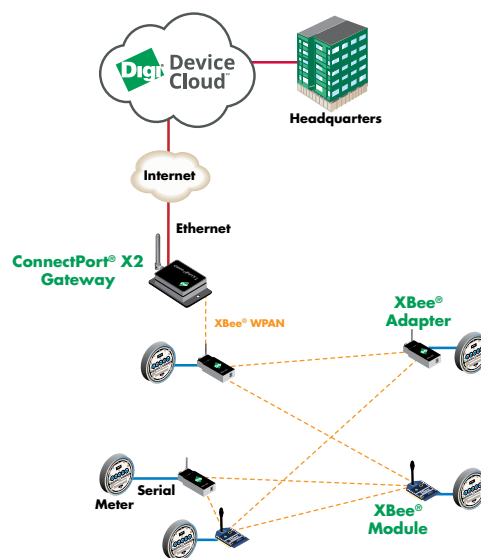


Range Extenders



Sensors

Application Highlight



Features/Benefits

- XBee to Ethernet IP gateways support numerous XBee protocols
- Commercial and industrial grade enclosures for flexible environments
- Industrial grade enclosure for flexible environments
- Device Cloud for secure, scalable access to an unlimited number of remote assets and seamless web services integration from Digi gateways into customer back office applications



Specifications

ConnectPort® X2

General	
Management	HTTP/HTTPS web interface, Password access control, IP service port control, Optional secure enterprise management via Device Cloud
Protocols	UDP/TCP, DHCP, SNMPv1
Total Memory	8 MB Flash, 16 MB RAM
LEDs	Ethernet status, Power, ZigBee link/activity
Security	SSL tunnels
Dimensions (L x W x H) and Weight	5.50 in x 2.75 in x 1.13 in (13.9 cm x 7.0 cm x 2.9 cm); 0.44 lb (0.20 kg)
Wireless Interfaces	
XBee Module Options	802.15.4, ZigBee, DigiMesh 2.4, 900HP, XSC
Antenna Port	RPSMA female
Ethernet	
Ports	1 RJ-45 port
Physical Layer	10/100Base-T
Data Rate and Mode	10/100 Mbps (auto-sensing); Full or half duplex (auto-sensing)
Power Requirements	
Power Input	9-30 VDC
Power Supply	12 VDC power supply for 0° C to 60° C (32° F to 140° F) with locking barrel connector included; Extended temperature power supply available separately
Power Consumption	Idle: 1.2 W, Max: 3.4 W
Surge Protection (w/included power supply)	4 kV burst (EFT) per-4-4, 2 kV surge per EN61000-4
Environmental	
Operating Temperature	-30° C to +70° C (-22° F to +158° F)
Relative Humidity	5% to 95% (non-condensing)
Ethernet Isolation	1500 VAC min per IEEE802.3/ANSI X3.263
Regulatory Approvals	
Safety	EN60950
Emissions/Immunity	CE, FCC Part 15 (Class A)

You can purchase with confidence knowing that Digi is always available to serve you with expert technical support and our industry leading warranty. For detailed information visit www.digi.com/support.

91001647
H3/615

Digi International
Worldwide HQ
877-912-3444
952-912-3444
www.digi.com

Digi International
France
+33-1-55-61-98-98
www.digi.fr

Digi International
Japan
+81-3-5428-0261
www.digi-intl.co.jp

Digi International
Singapore
+65-6213-5380

Digi International
China
+86-21-50492199
www.digi.com.cn



www.digi.com

AMEYA360

Components Supply Platform

Authorized Distribution Brand :



Website :

Welcome to visit www.ameya360.com

Contact Us :

➤ Address :

401 Building No.5, JiuGe Business Center, Lane 2301, Yishan Rd
Minhang District, Shanghai , China

➤ Sales :

Direct +86 (21) 6401-6692

Email amall@ameya360.com

QQ 800077892

Skype [ameyasales1](#) [ameyasales2](#)

➤ Customer Service :

Email service@ameya360.com

➤ Partnership :

Tel +86 (21) 64016692-8333

Email mkt@ameya360.com