

# PRELIMINARY

## 2.45GHz Balun/Filter Combination

**P/N 2450FB39C100**

Detail Specification: 06/05/07

Page 1 of 2

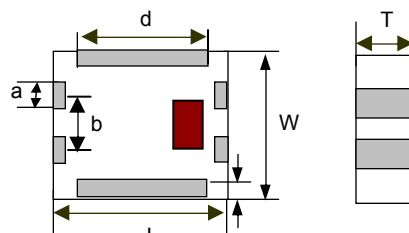
### General Specifications

<b>Part Number</b>	2450FB39C100
<b>Frequency (MHz)</b>	2400 - 2500
<b>Unbalanced Impedance</b>	50 $\Omega$
<b>Balanced Impedance</b>	100 $\Omega$
<b>Insertion Loss</b>	3.0 dB max.
<b>Return Loss</b>	9.5 dB min.
<b>Phase Difference</b>	180° $\pm$ 8
<b>Amplitude Difference</b>	1.0 dB max.

<b>Attenuation (dB)</b>	45 min. @ 880~960MHz
	38 min. @ 1710~1880 MHz
	35 min. @ 1880~1990 MHz
	20 min. @ 2110~2170 MHz
	30 min. @ 4800~5000MHz
<b>Operating + Storage Temp</b>	-40 to +85°C
<b>Reel Quantity</b>	3000
<b>Power Capacity</b>	1 watt max.
<b>MSL</b>	2

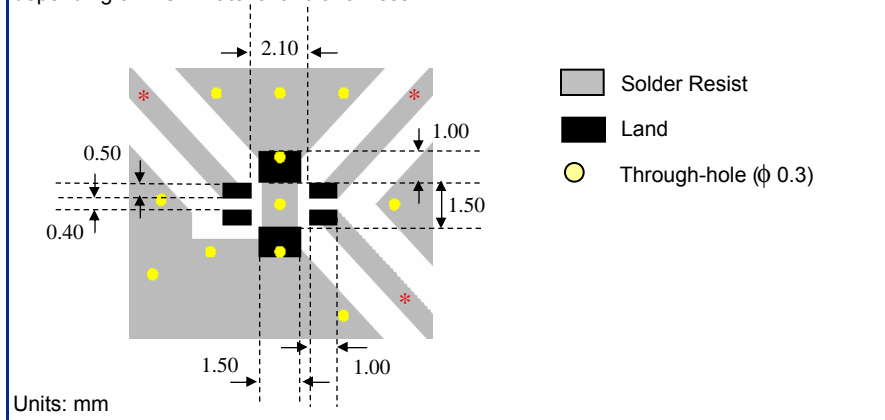
### Mechanical Dimensions

	In	mm
<b>L</b>	0.098 $\pm$ 0.008	2.50 $\pm$ 0.20
<b>W</b>	0.079 $\pm$ 0.008	2.00 $\pm$ 0.20
<b>T</b>	0.043 $\pm$ 0.004	1.10 $\pm$ 0.10
<b>a</b>	0.016 $\pm$ 0.008	0.40 $\pm$ 0.20
<b>b</b>	0.031 $\pm$ 0.008	0.80 $\pm$ 0.20
<b>c</b>	0.012 +.004/-0.008	0.30 +0.1/-0.2
<b>d</b>	0.075 $\pm$ 0.008	1.90 $\pm$ 0.20



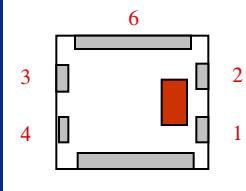
### Mounting Considerations

\* Line width should be designed to match 50  $\Omega$  characteristic impedance, depending on PCB material and thickness.



### Terminal Configuration

No.	Function
1	Unbalanced Port
2	DC
3	Balanced Port
4	Balanced Port
5	GND
6	GND



Johanson Technology, Inc. reserves the right to make design changes without notice.  
All sales are subject to Johanson Technology, Inc. terms and conditions.

# PRELIMINARY

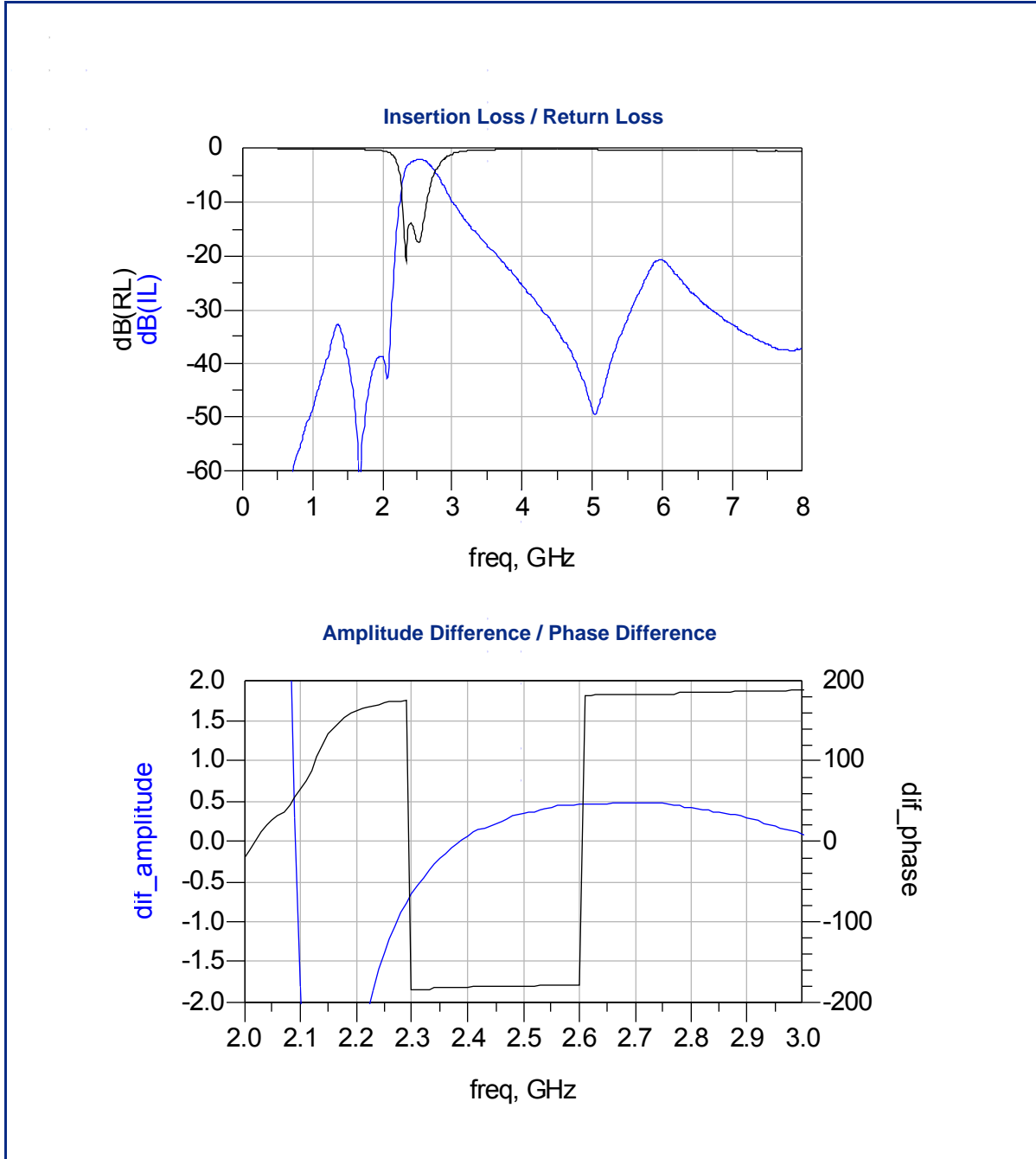
2.45GHz Balun/Filter Combination

P/N 2450FB39C100

Detail Specification: 06/05/07

Page 2 of 2

## Typical Electrical Performance (T=25°C)



Johanson Technology, Inc. reserves the right to make design changes without notice.  
All sales are subject to Johanson Technology, Inc. terms and conditions.



[www.johansontechnology.com](http://www.johansontechnology.com)  
4001 Calle Tecate • Camarillo, CA 93012 • TEL 805.389.1166 FAX 805.389.1821

2007 Johanson Technology, Inc. All Rights Reserved

# AMEYA360

## Components Supply Platform

Authorized Distribution Brand :



Website :

Welcome to visit [www.ameya360.com](http://www.ameya360.com)

Contact Us :

➤ Address :

401 Building No.5, JiuGe Business Center, Lane 2301, Yishan Rd  
Minhang District, Shanghai , China

➤ Sales :

Direct +86 (21) 6401-6692

Email [amall@ameya360.com](mailto:amall@ameya360.com)

QQ 800077892

Skype [ameyasales1](#) [ameyasales2](#)

➤ Customer Service :

Email [service@ameya360.com](mailto:service@ameya360.com)

➤ Partnership :

Tel +86 (21) 64016692-8333

Email [mkt@ameya360.com](mailto:mkt@ameya360.com)