

# ProtoBox-1553B Kit (PCB+Box)



*A Hammond 1553B soft-side plastic enclosure packaged  
with a matching ProtoBoard 2-hole per strip PCB.*



**BusBoard Prototype Systems** - Built for designers

[www.BusBoard.com](http://www.BusBoard.com) [sales@busboard.com](mailto:sales@busboard.com)

BPS-MAR-(KIT-1553B)-001 Rev 4.00



# ProtoBoard-1553B – for Hammond 1553B Boxes



*A prototyping board designed for the Hammond soft-sided handheld case.*

## Features

*ProtoBoard* saves time! The PCB is designed specifically for the Hammond 1553B box. No cutting is required. The mounting holes are present in the right spots.

The convenient 2-hole ProtoBoard pattern provides an easy way to connect parts while maximizing usable board area.

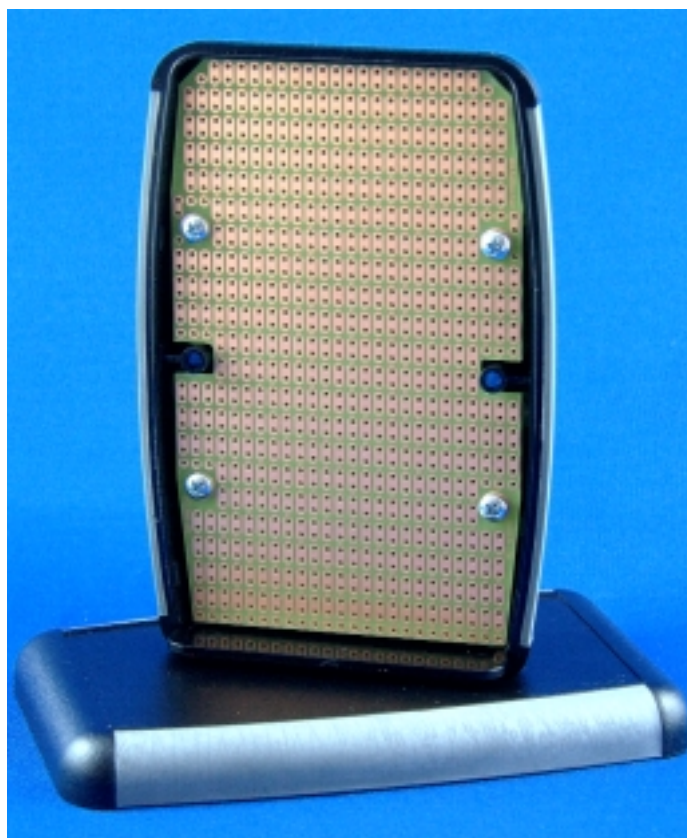
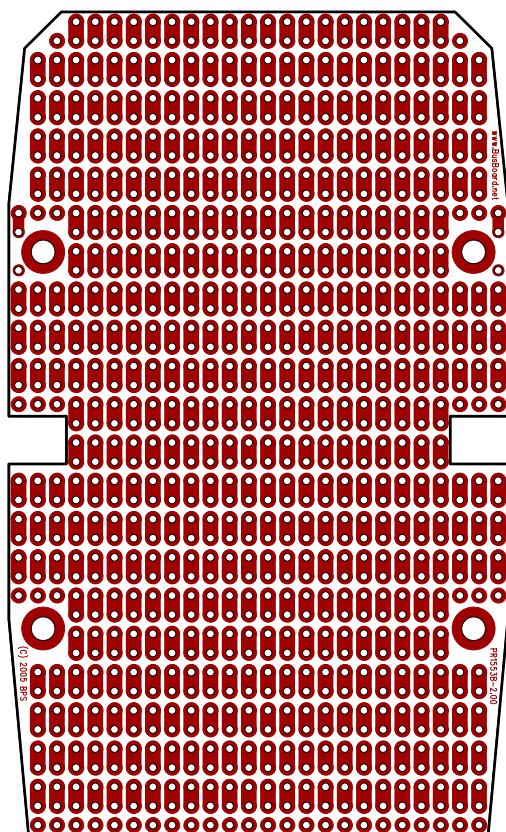
**Lead free** etched copper PCB with an anti-tarnish coating for easy soldering.

## PCB Specifications

- High-quality FR4 glass epoxy board.
- Four 0.125" (1/8") mounting holes.
- Four 4-40 PCB mounting screws provided.
- Single sided, 1oz/ft<sup>2</sup> copper PCB
- 0.042" holes drilled on 0.1" centers
- PCB Size 2.8 x 4.3 in. (71 x 108mm)

**Order Part# PR1553B (for PCB only)**

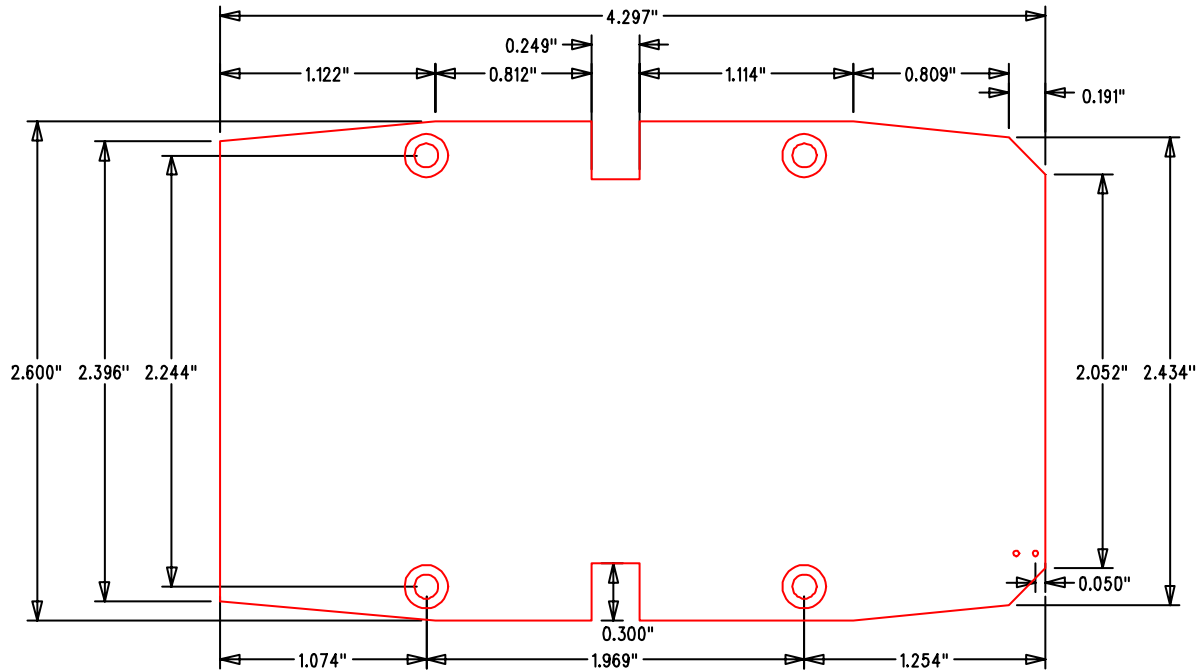
## Board Layout (actual size)



**PR1553B Prototyping Board shown with the Hammond 1553BBK box (box not included).**

**To purchase the PCB + Box together,  
order BPS part# KIT-1553B-BK**

## PCB Mechanical Dimensions



1. PCB is symmetrical along the centerline.
  2. All solder pads are located on a 0.100" grid.
  3. The mounting holes are NOT located on the 0.100" grid.
- PCB Design Copyright 2005 BusBoard Prototype Systems Ltd.

## Hammond 1553B Hand Held Case Features

Note: The box is **NOT** included with BPS part# PR1553B.

The box is included with part# KIT-1553B-BK.

Soft-sided ergonomic hand held electronic case.

Box Size 4.6 x 3.1 x 1.0 inches (117 x 79 x 24mm)

1 removable end panel (included).

Built-in PCB standoffs.

Box closed with self tapping screws (included).

Recessed top for membrane display or keypad.

Lap joint construction provides protection against dust accumulation and splashing water.

Gray/Gray, Black/Gray, Black/Black, Yellow, Red, and Translucent Blue colors available.

To order the box by itself, use Hammond part #'s 1553BGY, 1553BBK, 1553BBK BK, 1553BTBUBK, 1553BRDBK, 1553BYLBK

See <http://www.hammondmfg.com/1553.htm>  
<http://www.hammondmfg.com/1553colors.htm>

© 2013 BusBoard Prototype Systems Ltd.



**BusBoard Prototype Systems - Built for designers**

[www.BusBoard.com](http://www.BusBoard.com) sales@busboard.com

BPS-MAR-PR1553B-001 Rev 4.00



1553BBKBK



1553BTBUBK



1553BRDBK



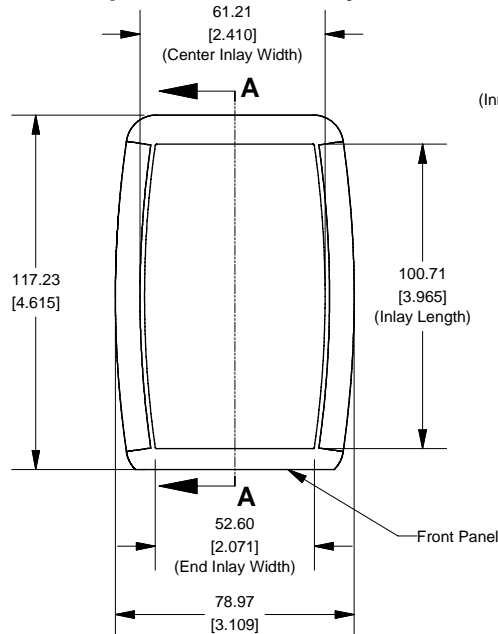
1553BYLBK

1553BGY

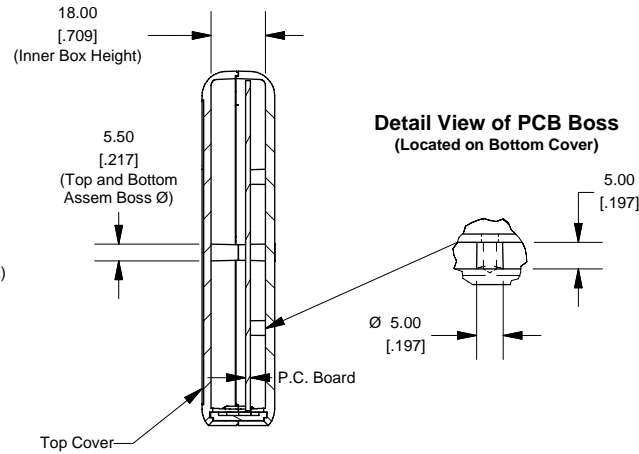




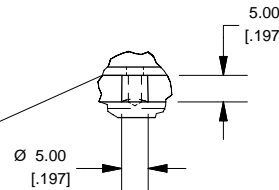
# Top View of Assembly



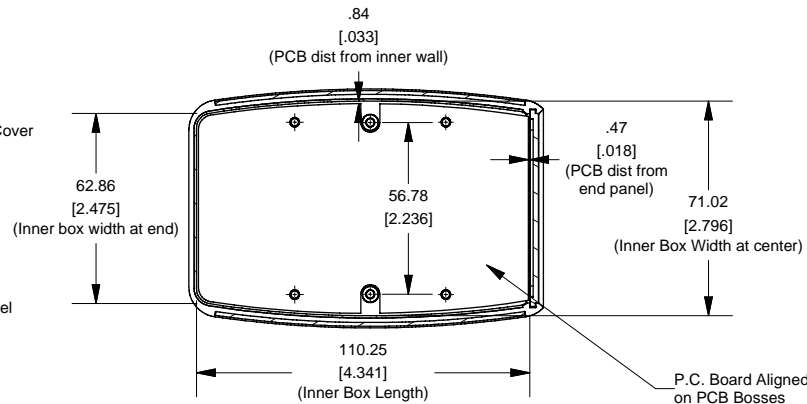
# SECTION A-A (Side View Inside Assembly)



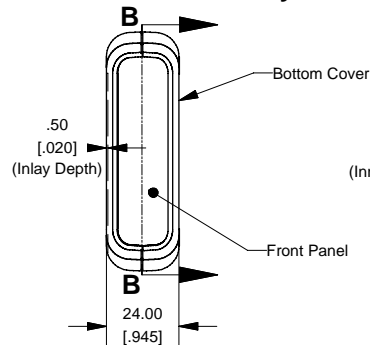
# Detail View of PCB Boss (Located on Bottom Cover)



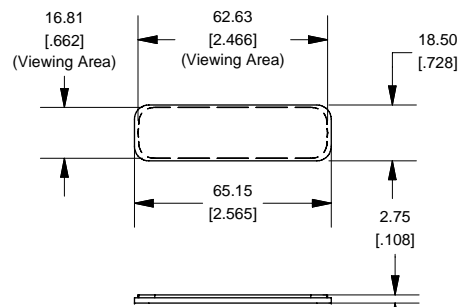
# SECTION B-B (Inside of Bottom Cover)



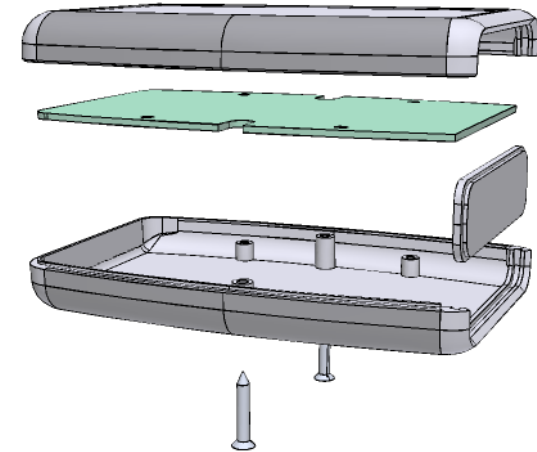
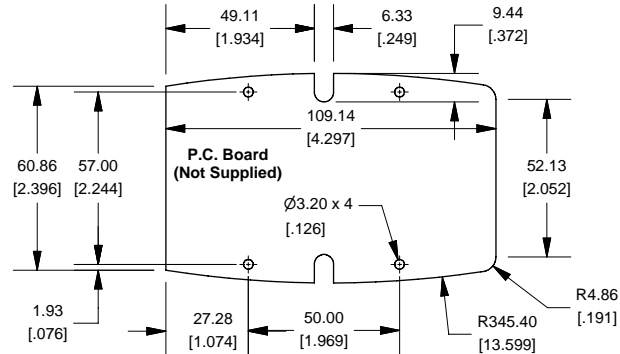
# End View of Assembly



# Front/Rear Panel (Dashed Line Indicates Viewing Area)



# Maximum P.C. Board Size



Enclosures can be Factory Modified ( Milling, Drilling, Printing etc. )  
Solid models of this enclosure available in STEP or IGES.  
Contact Factory [mjm@hammondmfg.com](mailto:mjm@hammondmfg.com)

## NOTE

Enclosure molded from GP ABS (UL94-HB) plastic.

Purchased assembly includes top and bottom cover, front plastic panel and 2 cover screws.

## PART NUMBERS

### 1553B Enclosure

Black Enclosure/Grey Over-mold	1553BBK
Red Enclosure/Black Over-mold	1553BGY
Translucent Blue Enclosure/Black Over-mold	1553BTBUBK
Yellow Enclosure/Black Over-mold	1553BYLBK
Grey Enclosure/Grey Over-mold	1553BGYBAT

### ACCESSORIES

Cover Screws (Pkg 100)	1593MS100 (Silver)
#4 x 5/8" self-tapping oval head (15.9mm)	1593MS100BK (Black)
P.C. Board Screws	1593ATS50 (Pkg 50)
#4 x 1/4" self-tapping (6.4mm)	1593ATS100 (Pkg 100)
Belt or Pocket Clip	1599CLIP (Black)
	1599CLIPGY (Grey)

**HAMMOND  
MANUFACTURING™**

**1553B**

[www.hammondmfg.com](http://www.hammondmfg.com)

# AMEYA360

Components Supply Platform

Authorized Distribution Brand :



Website :

Welcome to visit [www.ameya360.com](http://www.ameya360.com)

Contact Us :

➤ Address :

401 Building No.5, JiuGe Business Center, Lane 2301, Yishan Rd  
Minhang District, Shanghai , China

➤ Sales :

Direct    +86 (21) 6401-6692  
Email     amall@ameya360.com  
QQ        800077892  
Skype     ameyasales1 ameyasales2

➤ Customer Service :

Email     service@ameya360.com

➤ Partnership :

Tel        +86 (21) 64016692-8333  
Email     mkt@ameya360.com