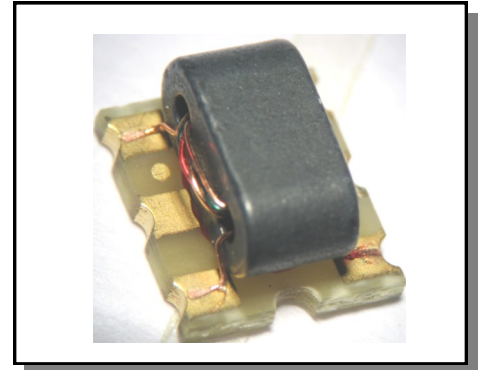


## Features

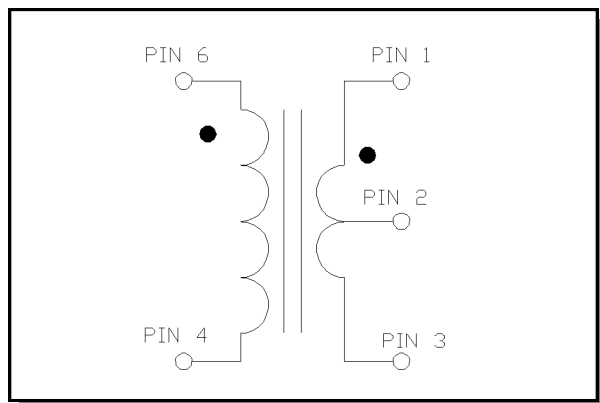
- Surface Mount
- 4:1 Step Down Transformer
- Excellent performance under DC bias current, even when current flows is imbalanced out outputs
- 260°C Reflow Compatible
- RoHS\* Compliant, lead free
- Available on Tape and Reel.



**Electrical Specifications:**  $Z_0 = 75\Omega$ ,  $T_A = 25^\circ\text{C}$ ,  $P_{in} = 0\text{dBm}$

Parameter	Conditions	Units	Min	Typ	Max
Insertion Loss 1 (pin6-pin1)	5 - 50 MHz	dB	-	0.4	0.8
	50 - 150 MHz	dB	-	1.0	2.2
	150 - 200 MHz	dB	-	2.0	3.1
Insertion Loss 2 (pin6-pin3)	5 - 50 MHz	dB	-	0.4	0.8
	50 - 150 MHz	dB	-	1.1	2.5
	150 - 200 MHz	dB	-	2.4	3.6
Amplitude Balance	5 - 50 MHz	dB	-	0.0	$\pm 0.4$
	50 - 150 MHz	dB	-	0.0	$\pm 1.0$
	150 - 200 MHz	dB	-	0.3	$\pm 1.4$
Phase Balance	5 - 50 MHz	$^\circ$	-	0.6	$\pm 4$
	50 - 200 MHz	$^\circ$	-	0.8	$\pm 9$
Input Return Loss (pin6)	5 - 25 MHz	dB	17	20	-
	25 - 50 MHz	dB	12	15	-
	50 - 150 MHz	dB	5	9	-
	150 - 200 MHz	dB	3	5	-

## Schematic



## Pin Configuration

Pin No.	Function
1	Secondary Dot (output1)
2	Ground (center tap)
3	Secondary (output2)
4	Primary (RF ground)
5	Ground (not used)
6	Primary dot (input)

# MABA-011002

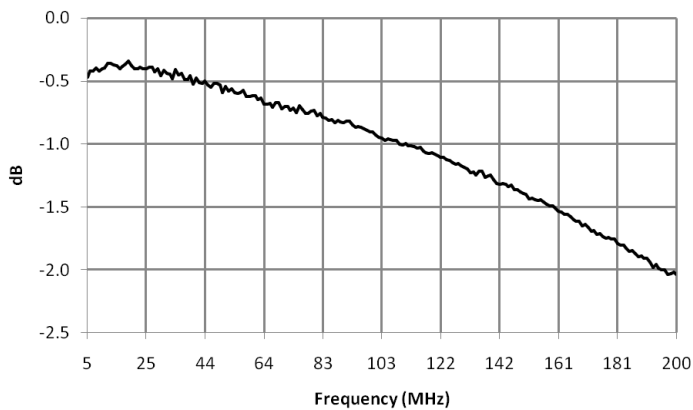


4:1 Step Down Transformer  
5 - 200 MHz

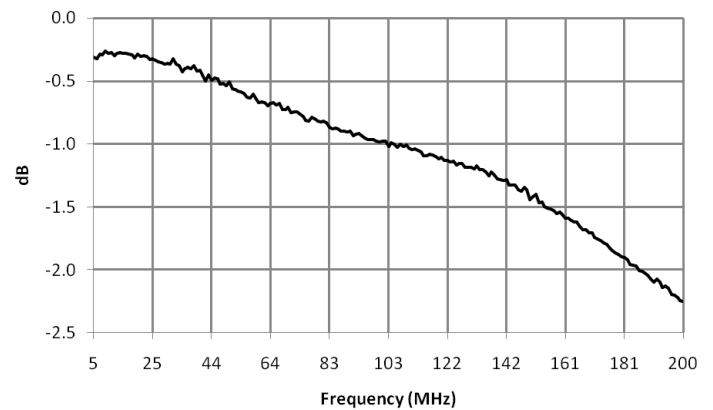
Rev. V1

Electrical Specifications:  $Z_0 = 75\Omega$ ,  $T_A = 25^\circ\text{C}$ ,  $P_{in} = 0\text{dBm}$

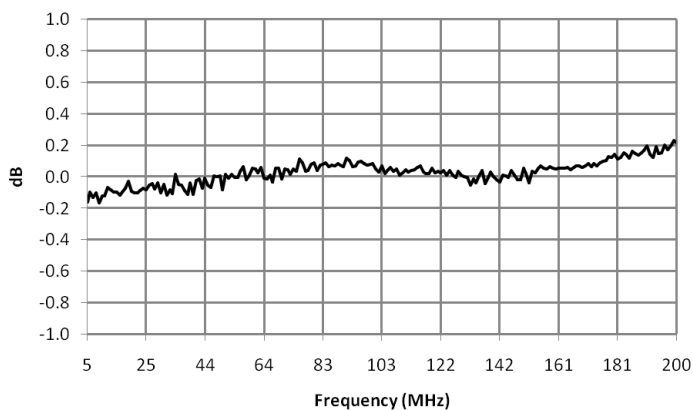
MABA-011002 insertion\_loss\_pin\_6\_1



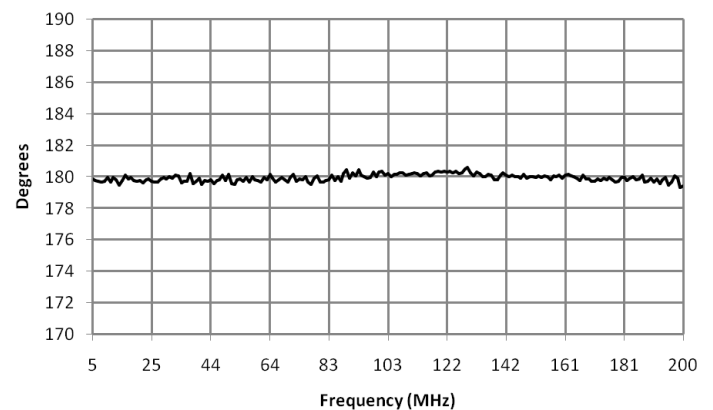
MABA-011002 insertion\_loss\_pin\_6\_3



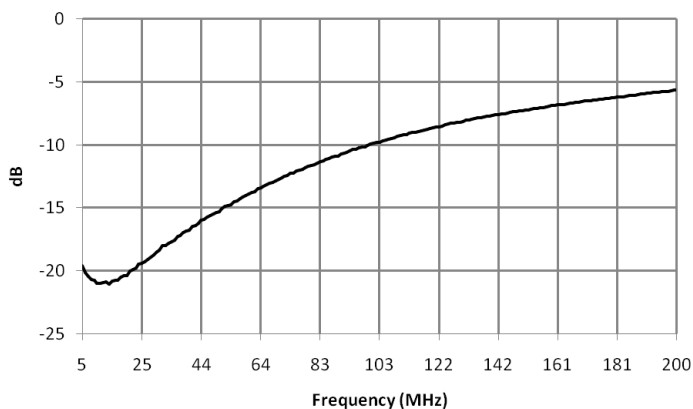
MABA-011002 amplitude\_balance



MABA-011002 phase\_balance



MABA-011002 input\_return\_loss\_pin\_6



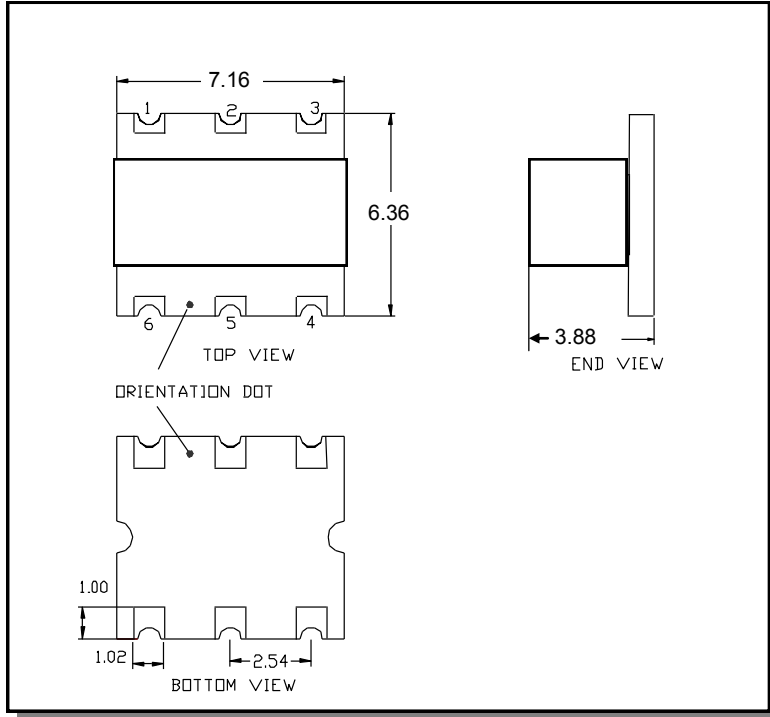
# MABA-011002



4:1 Step Down Transformer  
5 - 200 MHz

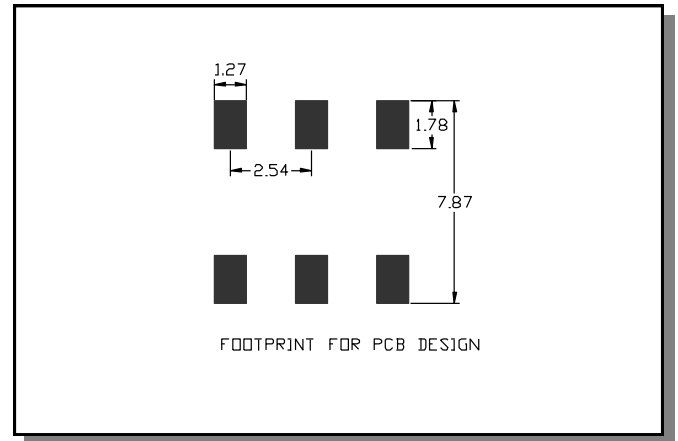
Rev. V1

## Outline Drawing

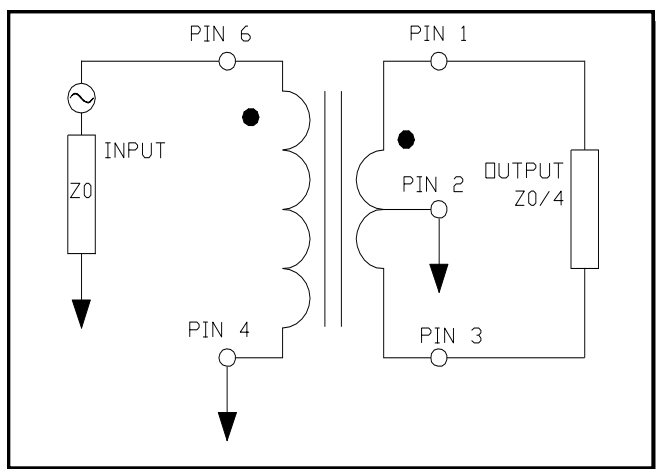


Dimensions in mm Tolerance: .xx ± .30, .xxx ± .030, unless otherwise stated

## Recommended Footprint



## Application Circuit



# MABA-011002



4:1 Step Down Transformer  
5 - 200 MHz

Rev. V1

## Tape & Reel Information

Parameter	Units	Value
Qty per reel	-	900
Reel Size	mm	330
Tape Width	mm	16.00
Pitch	mm	12.00
Ao	mm	6.60
Bo	mm	7.40
Ko	mm	4.10
Orientation	-	F38
Reference Application Note ANI-019 for orientation		

## Ordering Information

Part Number	Description
MABA-011002	Tape & Reel
MABA-011002-TB	Customer Evaluation Board

## Recommended Maximum Ratings

Parameter	Units	Min	Max
Input Power	W		1
Internal Load Dissipation	W		0.125
Tested up to DC bias current, will perform above this level	mA		900
Operating Temperature Range	°C	-40	+85

Full temperature plots available on request

# AMEYA360

Components Supply Platform

Authorized Distribution Brand :



Website :

Welcome to visit [www.ameya360.com](http://www.ameya360.com)

Contact Us :

➤ Address :

401 Building No.5, JiuGe Business Center, Lane 2301, Yishan Rd  
Minhang District, Shanghai , China

➤ Sales :

Direct      +86 (21) 6401-6692  
Email        amall@ameya360.com  
QQ            800077892  
Skype        ameyasales1 ameyasales2

➤ Customer Service :

Email        service@ameya360.com

➤ Partnership :

Tel            +86 (21) 64016692-8333  
Email        mkt@ameya360.com