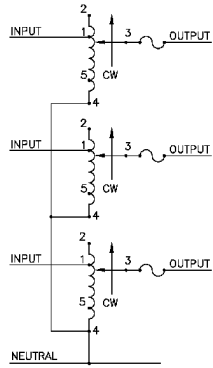
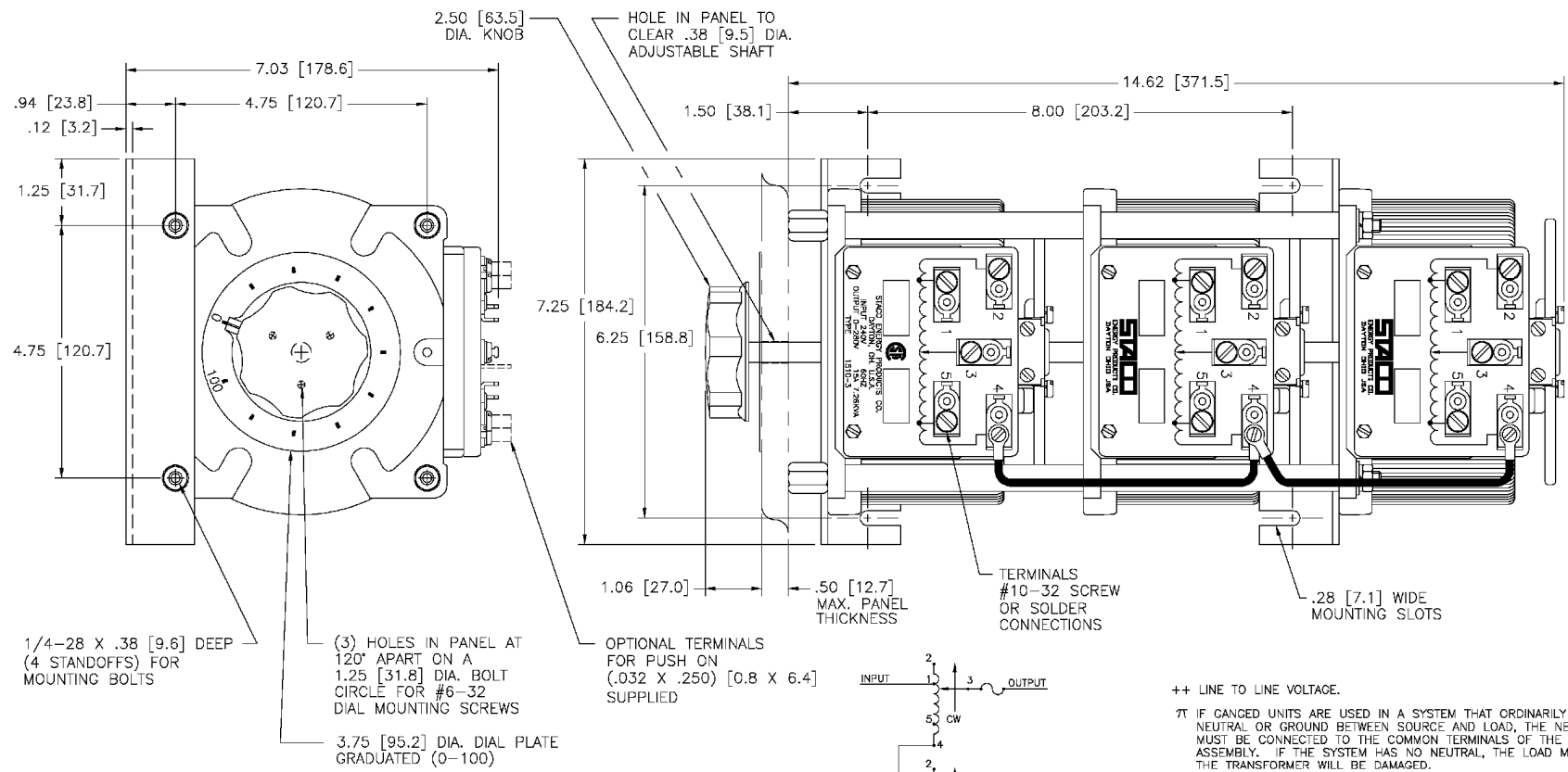


REV. NO.	031-3625		
REV. D	REVISIONS		
REV. A	24892	7/17/02	REDRAWN TO CAD
REV. B	25594	10/25/03	MOVED INPUT FROM 5 TO 1
REV. C	25797	10/13/06	ADDED CSA LOGO



**SCHEMATIC**  
THREE PHASE WYE  
FUSES RECOMMENDED BUT NOT SUPPLIED

- ++ LINE TO LINE VOLTAGE.
- 7T IF CANGED UNITS ARE USED IN A SYSTEM THAT ORDINARILY HAS A COMMON NEUTRAL OR GROUND BETWEEN SOURCE AND LOAD, THE NEUTRAL OR GROUND MUST BE CONNECTED TO THE COMMON TERMINALS OF THE VARIABLE TRANSFORMER ASSEMBLY. IF THE SYSTEM HAS NO NEUTRAL, THE LOAD MUST BE BALANCED OR THE TRANSFORMER WILL BE DAMAGED.
- JUMPER PROVIDED IN STANDARD COMMON POSITION AND SHOULD BE MOVED OR REMOVED AS REQUIRED.

WIRING	SPECIFICATIONS						SHAFT ROTATION TO INCREASE VOLTAGE	TERMINAL CONNECTIONS			
	INPUT		OUTPUT		CONSTANT IMPEDANCE LOAD			FOR INCREASING VOLTAGE AS VIEWED FROM BASE END ■			
	VOLTS	HERTZ	VOLTS	CONSTANT CURRENT LOAD	MAX. AMPS	MAX. KVA		INPUT	JUMPER OUTPUT		
THREE PHASE WYE 7T	240	50/60	0-240	15	6.22	20	8.30	CW	2-2-2	4-4-4	3-3-3
			0-280	15	7.26	—	—	CCW	1-1-1	4-4-4	3-3-3
								CCW	5-5-5	2-2-2	3-3-3

UNLESS OTHERWISE SPECIFIED, TOLERANCE IS AS SHOWN IN FIGURE

DATE: 7/17/02

DESIGNER: TIM RAU

ENGINEER: DATE: SCALE: 1=1

WEIGHT APPROX: 55.50 LBS.

CASE CODE: 83008

STACO PRODUCTS CO. A Subsidiary of Emerson Electric Co. 1000 North Lincoln Street, Elmhurst, IL 60120

TYPE: 1510-3

REV. NO. 031-3625



# AMEYA360

## Components Supply Platform

Authorized Distribution Brand :



Website :

Welcome to visit [www.ameya360.com](http://www.ameya360.com)

Contact Us :

➤ Address :

401 Building No.5, JiuGe Business Center, Lane 2301, Yishan Rd  
Minhang District, Shanghai , China

➤ Sales :

Direct +86 (21) 6401-6692

Email [amall@ameya360.com](mailto:amall@ameya360.com)

QQ 800077892

Skype [ameyasales1](#) [ameyasales2](#)

➤ Customer Service :

Email [service@ameya360.com](mailto:service@ameya360.com)

➤ Partnership :

Tel +86 (21) 64016692-8333

Email [mkt@ameya360.com](mailto:mkt@ameya360.com)