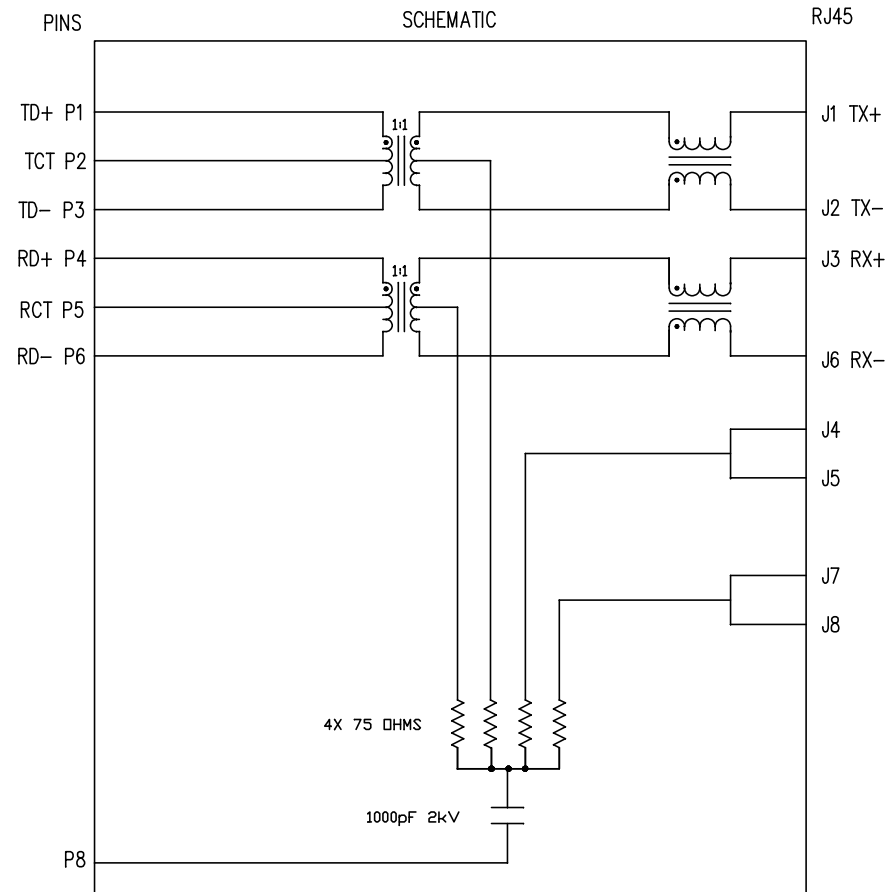



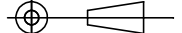
ELECTRICAL CHARACTERISTICS @ 25°C

OPERATING TEMPERATURE RANGE:	: -40°C TO +85°C
1.0 TURNS RATIO: (P6-P5-P4) : (J6-J3)	: 1CT : 1CT ± 3%
(P3-P2-P1) : (J2-J1)	: 1CT : 1CT ± 3%
2.0 INDUCTANCE: (P6-P4)	: 350uH MIN. @ 0.1V, 100KHz, 8mA DC Bias
(P3-P1)	: 350uH MIN. @ 0.1V, 100KHz, 8mA DC Bias
3.0 LEAKAGE INDUCTANCE: P6-P4 (WITH J6 AND J3 SHORT)	: 0.3uH MAX. @ 1MHz
P3-P1 (WITH J2 AND J1 SHORT)	: 0.3uH MAX. @ 1MHz
4.0 INTERWINDING CAPACITANCE: (P6,P5,P4) TO (J6,J3)	: 40pF MAX @ 1MHz
(P3,P2,P1) TO (J2,J1)	: 40pF MAX. @ 1MHZ
5.0 DC RESISTANCE: (J6-J3)=(J2-J1)	: 1.2 ohms Max.
6.0 RETURN LOSS: (P6-P4)=100 OHMS AND (P1-P3)=100 OHM REF.	
1MHz TO 30MHz	: 18dB MIN.
60MHz TO 80MHz	: 12dB MIN.
NOTE: 100 OHMS CONNECTED TO (J2-J1) OR (J6-J3).	
7.0 DIELECTRIC WITHSTAND: (J1, J2) TO (P1, P3)	: 1500 Vrms
(J3, J6) TO (P4,P6)	: 1500 Vrms
8.0 INSERTION LOSS: RS=RL=100 ohms	
100KHz TO 100MHZ	: 1.1 dB TYP
9.0 RISE TIME: RS=100 OHMS AND RL = 100 OHMS	
OUTPUT VOLTAGE = 1 V peak	: 3.0 nS MAX
PULSE WIDTH= 112nS	: 3.0 nS MAX
10.0 CROSS TALK: 1MHz TO 100MHZ	: 40 dB TYP
11.0 COMMON TO COMMON MODE ATTENUATION: 30MHz TO 100MHZ	: 35dB TYP

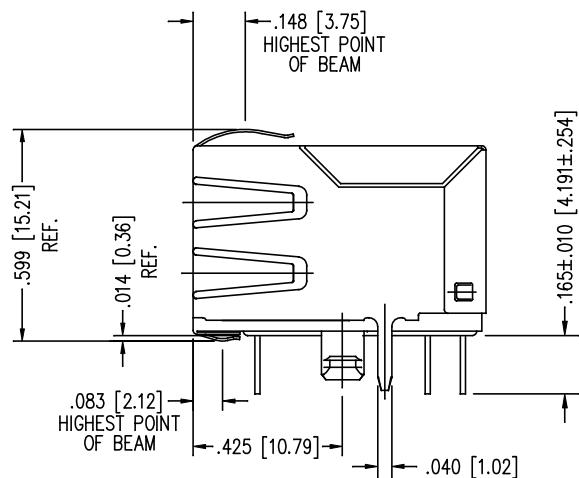



NOTES

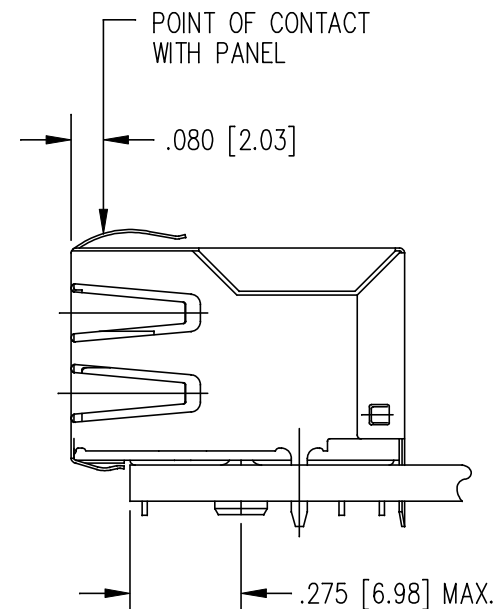
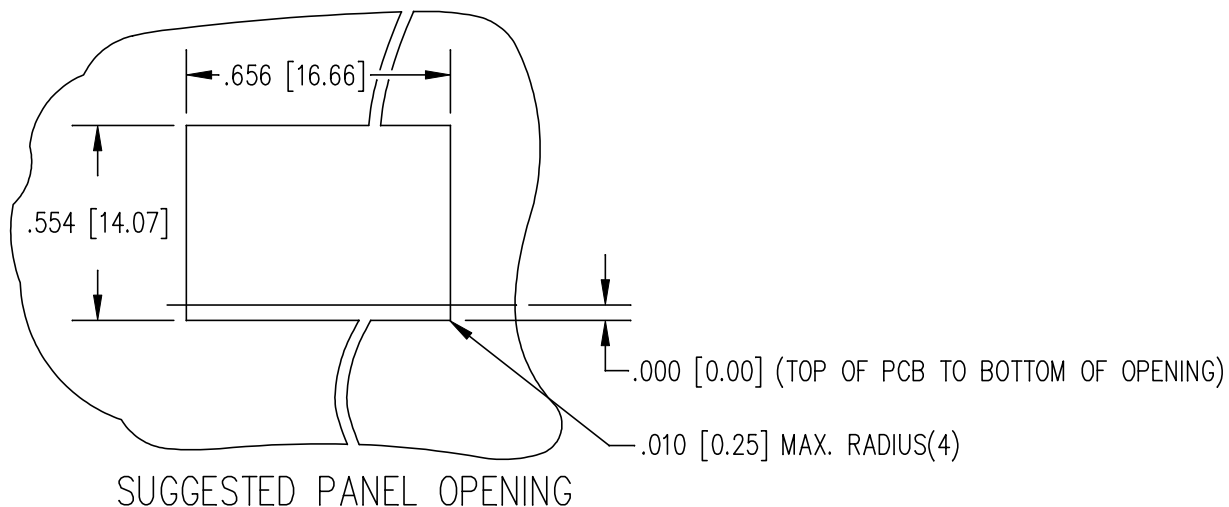
1.0 PINS WITHOUT ELECTRICAL CONNECTION ARE OMITTED.

ORIGINATED BY	DATE	TITLE	PART NO. / DRAWING NO.	STANDARD DIM.	[] METRIC DIM. AS REFERENCE		
Bain Liu	09-03-09	MagJack® 10/100BT TAB DOWN, SHIELDED PATENTED	SI-60118-F FILE NAME SI-60118-F.DWG	TOL. IN INCH	UNIT : INCH [mm]	REV. : A0	
DRAWN BY	DATE			.X	SCALE : N/A	SIZE : A4	
Bain Liu	09-03-09			.XX		PAGE : 2	
				.XXX			

RoHS
2002/95/EC



ORIGINATED BY	DATE	TITLE <div>MagJack®</div> <div>10/100BT</div> <div>TAB DOWN, SHIELDED</div> <div>PATENTED</div>	PART NO. / DRAWING NO.	STANDARD DIM.		[] METRIC DIM. AS REFERENCE		<div>bel</div> <div>COMPONENTS-OR-A</div> <div>CONNECTED</div> <div>PLANET</div>	
Bain Liu	09-03-09		SI-60118-F	TOL. IN INCH		UNIT : INCH [mm]			REV. : A0
DRAWN BY	DATE		FILE NAME	.X		SCALE : N/A			SIZE : A4
Bain Liu	09-03-09		SI-60118-F.DWG	.XX					PAGE : 3
			.XXX	±0.005					



1. THE SUGGESTED PANEL OPENING IS INTENDED TO GIVE THE USER THE ABILITY TO HAVE REASONABLE JACK / PANEL CLEARANCES YET MAINTAIN RELIABLE GROUNDING CAPABILITY.
2. ALL TOLERANCES NOT OTHERWISE SPECIFIED TO BE ± 0.005 [0.13]

ORIGINATED BY	DATE	TITLE <div>MagJack®</div> <div>10/100BT</div> <div>TAB DOWN, SHIELDED</div> <div>PATENTED</div>	PART NO. / DRAWING NO.	STANDARD DIM.		[] METRIC DIM. AS REFERENCE		bel <div>COMPONENTS FOR A CONNECTED PLANET</div>	
Bain Liu	09-03-09		SI-60118-F	TOL. IN INCH		UNIT : INCH [mm]			REV. : A0
DRAWN BY	DATE		FILE NAME	.X		SCALE : N/A			SIZE : A4
Bain Liu	09-03-09		SI-60118-F.DWG	.XX		PAGE : 4			
				.XXX ±0.005					

AMEYA360

Components Supply Platform

Authorized Distribution Brand :



Website :

Welcome to visit www.ameya360.com

Contact Us :

➤ Address :

401 Building No.5, JiuGe Business Center, Lane 2301, Yishan Rd
Minhang District, Shanghai , China

➤ Sales :

Direct +86 (21) 6401-6692

Email amall@ameya360.com

QQ 800077892

Skype ameyasales1 ameyasales2

➤ Customer Service :

Email service@ameya360.com

➤ Partnership :

Tel +86 (21) 64016692-8333

Email mkt@ameya360.com