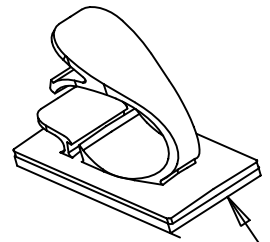
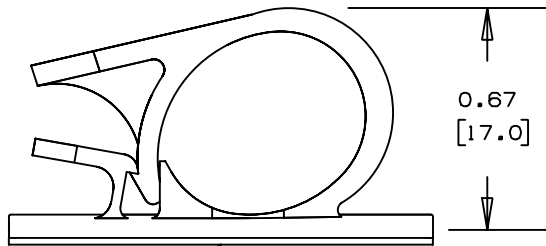


Technical drawing of a mechanical part with dimensions:

- Overall width: 1.26 [32.0]
- Overall height: 1.00 [25.4]
- Internal width (from left face to start of taper): 0.63 [16.0]
- Internal height (from bottom face to start of taper): 0.63 [16.0]



FULL SCALE



ADHESIVE BACKING: PRESSURE SENSITIVE FOAM  
0.04 [1.0] THICK WITH PROTECTIVE LINER TO  
EXTEND BEYOND EDGE FORMING A TEAR TAB.

PANDUIT PART NUMBER*	MAXIMUM CABLE DIA. in. (mm)	WEIGHT lbs. (g)/100pcs
LWC50-A	0.50 (12.7)	0.84 (379)

\*1) SEE CURRENT PRICE SHEET FOR PART  
NUMBER SUFFIX DESIGNATION, FOR  
PACKAGE SIZE.

2) MOUNT IS DESIGNED TO SUPPORT  
0.63 lbs [284g] MAX WEIGHT ON  
A CLEAN DRY SMOOTH SURFACE.

NO WARRANTY, EXPRESSED OR IMPLIED, IS MADE BY PANDUIT WITH RESPECT TO ADHESIVE BOND PERFORMANCE, AMONG OTHER THINGS, THE CONDITIONS UNDER WHICH THESE MOUNTS MAY BE APPLIED, AND/OR THE SURFACE TO WHICH THEY MAY BE APPLIED, ARE BEYOND PANDUIT'S CONTROL.

**CAD FILENAME/LAYERS**

# PANDUIT

CORP.

LWC50-A, LATCHING WIRE CLIP

UNLESS OTHERWISE SPECIFIED,  
ALL DIMENSIONS ARE GIVEN  
IN INCHES, THIRD ANGLE PROJECTION.

Y - IR|

NYLON 6/6

2X

GB0161BA

DWG  
A  
SIZE

2	11-10-00	CGSM		CORRECTED 0.67 DIMENSION PLACEMENT	GB0161BA	2				
1	1-7-98	CGSM		CHANGED NOTE 3 ON APPLICATION INSTR.	GB0161BA	1				
R	11-5-93	JRL		INITIAL RELEASE	GB0161BA	R				
REV	DATE	BY	CHK	DESCRIPTION	ECN - R	CUST	SUP			

# AMEYA360

Components Supply Platform

Authorized Distribution Brand :



Website :

Welcome to visit [www.ameya360.com](http://www.ameya360.com)

Contact Us :

➤ Address :

401 Building No.5, JiuGe Business Center, Lane 2301, Yishan Rd  
Minhang District, Shanghai , China

➤ Sales :

Direct     +86 (21) 6401-6692  
  
Email        amall@ameya360.com  
  
QQ            800077892  
  
Skype        ameyasales1 ameyasales2

➤ Customer Service :

Email        service@ameya360.com

➤ Partnership :

Tel            +86 (21) 64016692-8333  
  
Email        mkt@ameya360.com