

## F-28U

### Electrical Specifications (@25C)

1. Maximum Power: 187.5 VA
2. Primary: 115V 50/60 Hz
3. Secondary: 6.3VCT or 7.5VCT @ 25.0 Amps\*
4. Temperature Rise: 35C TYP (45C MAX allowed)

### Description:

The F-28U is part of a series which has a long history of reliable service in the field, made from a proven design and constructed with UL recognized materials.

### Construction:

Wound on a single channel nylon bobbin. Materials are UL recognized, Class B (130° C) rated.

### Safety:

These products are 100% hipot tested with an insulation of 3000V between primary and secondary windings as well as between the primary / secondary windings and the core.

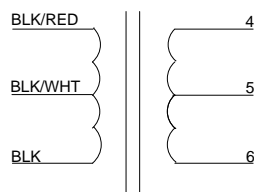
### Dimensions: Units: In inches

A	B	C	D	E	F
4.625	3.812	3.625	3.00	3.062	2.00

Lead length: 10.0 inches  $\pm$  1 inch

Weight: 7.0 lbs

### Schematic:



Primary: For 6.3VCT output, connect input to BLK to BLK/RED

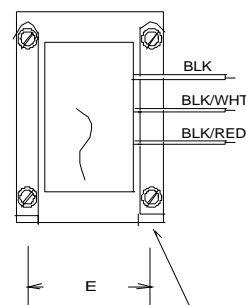
For 7.5VCT output, connect input to BLK to BLK/WHT

Secondary: 4 to 6

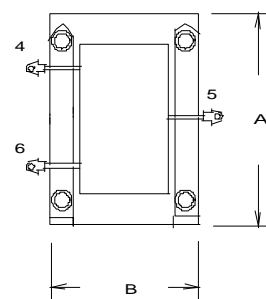
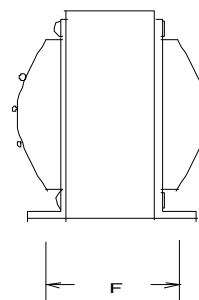
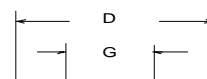
\* Tapped primary to produce lower voltages

**RoHS Compliance:** As of manufacturing date February 2005, all standard products meet the requirements of 2002/95/EC, known as the RoHS initiative.

\* Upon printing, this document is considered "uncontrolled". Please contact Triad Magnetics' website for the most current version.



MTG-SLOTS 13/64 X 5/16"  
4 SLOTS.



# AMEYA360

## Components Supply Platform

### Authorized Distribution Brand :



### Website :

Welcome to visit [www.ameya360.com](http://www.ameya360.com)

### Contact Us :

#### ➤ Address :

401 Building No.5, JiuGe Business Center, Lane 2301, Yishan Rd  
Minhang District, Shanghai , China

#### ➤ Sales :

Direct +86 (21) 6401-6692

Email [amall@ameya360.com](mailto:amall@ameya360.com)

QQ 800077892

Skype ameyasales1 ameyasales2

#### ➤ Customer Service :

Email [service@ameya360.com](mailto:service@ameya360.com)

#### ➤ Partnership :

Tel +86 (21) 64016692-8333

Email [mkt@ameya360.com](mailto:mkt@ameya360.com)