



DS1M12 "Stingray"

USB Oscilloscope & WaveForm Generator

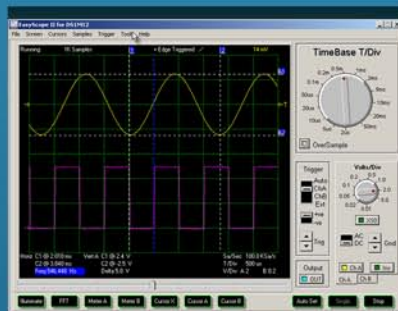
DESCRIPTION ▾

This new PC instrument supersedes our popular DS2200 budget oscilloscope. Powered from USB, Stingray needs no external power supply. Stingray combines the functions of Oscilloscope, Data Logger, Spectrum Analyser, Volt Meter, Frequency Meter and Waveform Generator in a single instrument. Stingray features simultaneous 12-bit sampling on both channels, a native sampling rate of 1MS/s (20MS/s for repetitive signals), sophisticated hardware triggering including delayed time base and pulse width. It also has a 3rd channel which can be a waveform generator output or an external trigger input. Stingray comes complete with EasyScope II (oscilloscope) and EasyLogger (data logging) software. The supplied Windows DLL's allows 3rd party applications to easily interface to Stingray. Example code in several popular programming languages including LabView are provided. Windows CE and Linux drivers are also available on request.

FEATURES ▾

- 12 Bit ADC Resolution
- Simultaneous sampling on both channels.
- 32k Byte Waveform buffer
- 20M S/s sampling rate (repetitive) 1M S/s native
- Maximum input voltage +/- 50V
- AC / DC Coupling
- Edge, min/max pulse width and delayed trigger modes
- Analog Bandwidth 250KHz
- Inbuilt 10-bit waveform generator with +/- 3.5v output range and 1k buffer.
- Hardware upgradeable over USB
- Self Powered USB Interface (250mA)
- Dimensions W: 116mm x H: 30mm x D: 100mm
- Weight : 160g excluding cable

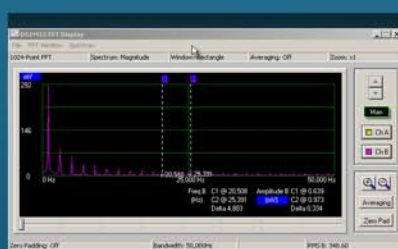
► EasyScope II Features



SCOPE SCREEN



METERS DISPLAY



FFT DISPLAY

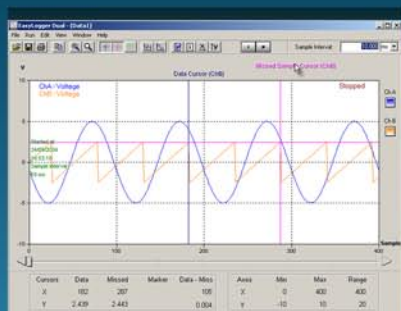


SIGNAL GENERATOR

DESCRIPTION ►

- Timebase - 2us/div to 50ms/div in 14 steps
- Y-Scale 10mV/div to 5V/div
- On Screen X and Y measurement cursors
- FFT Spectrum analyser display
- Meter Displays – Min / Max / Mean / True RMS voltage + Frequency
- Save results to CSV file
- Save screen to BMP File
- Sine Wave, Square Wave, Triangle, Sawtooth and user defined waveform generation.

► EasyLogger Features



DATA LOGGER

- Sampling Rate > 100,000 samples / sec to 100 sec / sample
- Flexible Y-axis scaling (V / mV / User Defined)
- Flexible X-axis scaling (sample number or time)
- Save to CSV , BMP, TXT or binary files
- Import from previously saved binary files
- Up to 3 on-screen cursors to track data
- Up to 4 pop-up or e-mail alerts
- Text memos for incorporating user notes in the data

DESCRIPTION ►

AMEYA360

Components Supply Platform

Authorized Distribution Brand :



Website :

Welcome to visit www.ameya360.com

Contact Us :

➤ Address :

401 Building No.5, JiuGe Business Center, Lane 2301, Yishan Rd
Minhang District, Shanghai , China

➤ Sales :

Direct +86 (21) 6401-6692

Email amall@ameya360.com

QQ 800077892

Skype ameyasales1 ameyasales2

➤ Customer Service :

Email service@ameya360.com

➤ Partnership :

Tel +86 (21) 64016692-8333

Email mkt@ameya360.com