

THRU-HOLE (THM) & SURFACE MOUNT (SMT) COIN CELL HOLDERS

DESIGN ADVANTAGES...

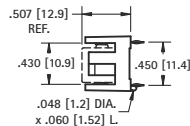
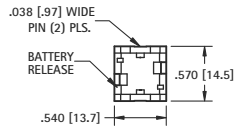
- Reliable spring tension assures low contact resistance
- Retains battery securely to withstand shock and vibration
- Base material UL Rated 94V-0. Impervious to most industrial solvents
- Operating temperature range: -60°F to +293°F (-50°C to +145°C)

IDEALLY SUITED FOR...

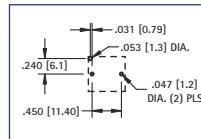
- Computer memory, power transfer and back-up systems
- Video and telecommunications power back-up
- Microprocessors and Microcomputer memory hold (desktop and laptop applications)
- Industrial and commercial security and alarm systems
- PC/104 application



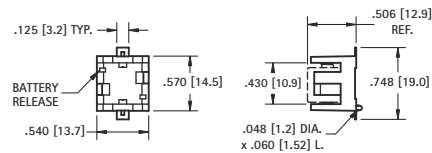
THRU HOLE MOUNT



Mounting Detail

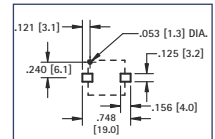


AVAILABLE ON TAPE AND REEL



SURFACE MOUNT

Pad Layout



MATERIAL:

Base: High Temperature Nylon 46, UL Rated 94V-0

Contacts: .012 (.30) Phosphor Bronze, Tin Plate

CAT. NO.	CELLS	BATTERY REFERENCE
503	1	DL1/3N, K58L, CR1/3N
	2	SR44, 357, MS76, G-13, 303, V313, PX76A

MATERIAL:

Base: High Temperature Nylon 46, UL Rated 94V-0

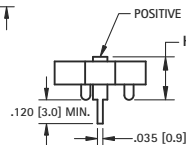
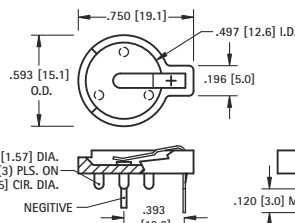
Contacts: .012 (.30) Phosphor Bronze, Gold Plate (Flash)

CAT. NO. BULK	ON TAPE & REEL	CELLS	BATTERY REFERENCE
498	498TR	1	DL1/3N, K58L, CR1/3N
		2	SR44, 357, MS76, G-13, 303, V313, PX76A

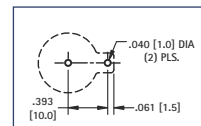
Tape & Reel Spec's: 44mm wide; 20mm pitch; 13 inch reel (200 pieces per reel)



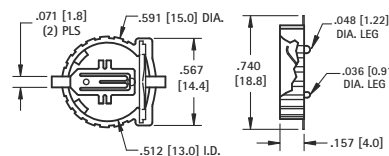
THRU HOLE MOUNT



Mounting Detail

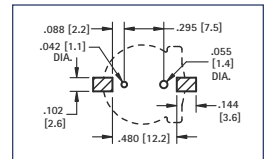


AVAILABLE ON TAPE AND REEL



SURFACE MOUNT

Pad Layout



MATERIAL:

Base: PBT, UL Rated 94V-0

Positive Contact: .015 (.38) Spring Steel, Tin-Nickel Plate

Negative Contact: .035 (.89) Dia. Steel, Tin-Nickel Plate

CAT. NO.	HEIGHT (H)	CELLS	BATTERY REFERENCE
500	.280 (7.1)	1	BR1212, CR1216, CL1220, CR1225
501	.380 (9.7)	2	BR1212, CR1216, CL1220, CR1225

MATERIAL:

Base: Glass Filled PPS, UL Rated 94V-0

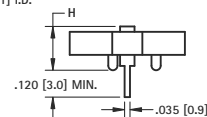
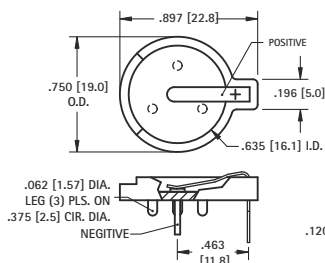
Contacts: .008 (.20) Phosphor Bronze, Gold Plate (Flash)

CAT. NO. BULK	ON TAPE & REEL	CELLS	BATTERY REFERENCE
1056	1056TR	1	CR1220, BR1220

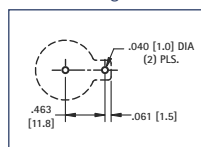
Tape & Reel Spec's: 32mm wide; 20mm pitch; 13 inch reel (500 per reel)



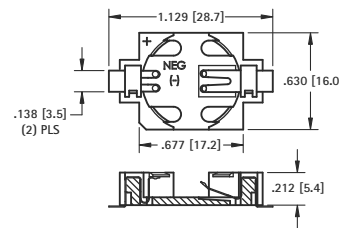
THRU HOLE MOUNT



Mounting Detail

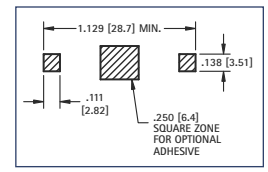


AVAILABLE ON TAPE AND REEL



SURFACE MOUNT

Pad Layout



MATERIAL:

Base: Glass Filled LCP, UL Rated 94V-0

Positive Contact: .015 (.38) Spring Steel, Tin-Nickel Plate

Negative Contact: .035 (.89) Dia. Steel, Tin-Nickel Plate

CAT. NO.	HEIGHT (H)	CELLS	BATTERY REFERENCE
502	.285 (7.3)	1	CR1612, CL1616, CL1620
		2	CR1612
502-3	.330 (8.4)	1	BR1625, CR1632
		2	BR1616, CR1620, CL1620

MATERIAL:

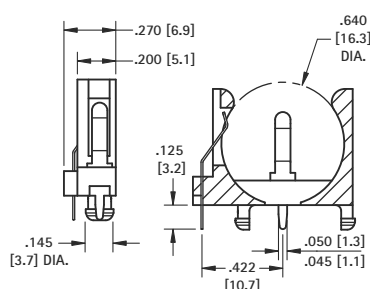
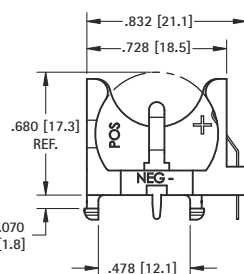
Base: Glass Filled LCP, UL Rated 94V-0

Contacts: .006 (.15) Phosphor Bronze, Gold Plate (Flash)

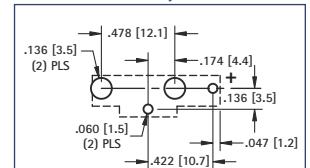
CAT. NO. BULK	ON TAPE & REEL	CELLS	BATTERY REFERENCE
504	504TR	1	BR1625, CR1632

Tape & Reel Spec's: 44mm wide; 24mm pitch; 13 inch reel (450 per reel)

16mm VERTICAL



Pad Layout



MATERIAL:

Base: PBT, UL Rated 94V-0

Contacts: .010 (.25) Steel, Tin-Nickel Plate

Battery Reference: (1) cell: BR1612, CR1616, CL1620, CR1625, BR1632

CAT. NO. 1069

20mm THRU-HOLE MOUNT COIN CELL HOLDERS

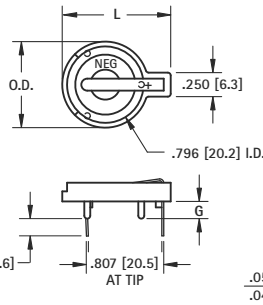


- Advanced air-flow design enhances air circulation around battery
- Reliable spring tension assures low contact resistance
- Unique notched slots assure quick and easy battery insertion and replacement
- Retains battery securely to withstand shock and vibration
- PBT base material UL rated 94V-0. Impervious to most industrial solvents
- Operating temperature range:
-60°F to +293°F (-50°C to +145°C)

MATERIAL:

Contacts: .020 (.50) Spring Steel, Tin-Nickel Plate

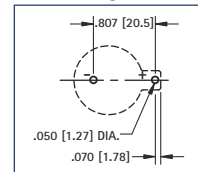
Base: PBT, UL Rated 94V-0



- **Cat. No. 101** is designed to maximize PC Board Capacity
- Unique raised mounting design allows components to be placed underneath the holder
- Ideal when board space is more important than board height; such as PC/104 applications

CAT. NO.	G	H	L	O.D.	NO. OF CELLS	BATTERY REFERENCE
103	.100 (2.5)	.335 (8.5)	1.130 (28.7)	.896 (22.8)	(1) cell (any 20mm) (2) 2012, (2) 2016	BR2012, CR2012, CR2016, CL2016, DL2020, CL2025, BR2025, CR2032, CL2032
101	.179 (4.6)	.414 (10.5)	1.130 (28.7)	.896 (22.8)	(1) cell (any 20mm) (2) 2012, (2) 2016	BR2012, CR2012, CR2016, CL2016, DL2020, CL2025, BR2025, CR2032, CL2032
106	.100 (2.5)	.335 (8.5)	1.219 (31.0)	1.093 (27.8)	(1) cell (any 20mm) (2) 2012, (2) 2016	BR2012, CR2012, CR2016, CL2016, DL2020, CL2025, BR2025, CR2032, CL2032
1026	.100 (2.5)	.452 (11.5)	1.219 (31.0)	1.093 (27.8)	(2) 2020, (2) 2025, (2) 2032	DL2020, CR2020, CL2025, BR2025, CR2032, CL2032

Mounting Detail



TOP LOADING



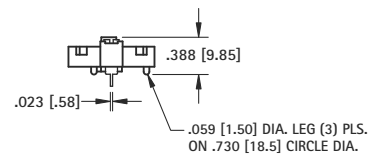
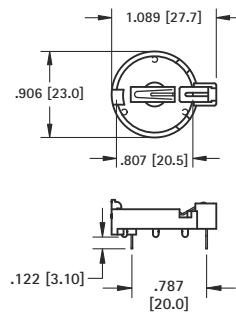
- Battery "Pop-in" from top for compact applications
- Finger pressure against lever will release battery
- No tools required for battery changes

MATERIAL:

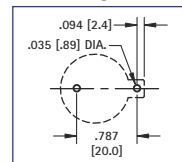
Contacts: .016 (.40) Phosphor Bronze, Tin Plate

Base: Nylon UL Rated 94V-0

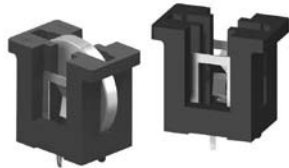
CAT. NO.	BATTERY REFERENCE
1066	BR2025, CR2032



Mounting Detail



VERTICAL COMPACT



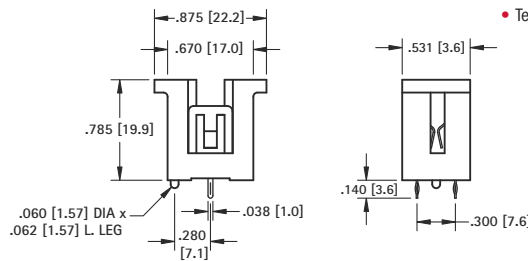
- Accepts all major manufacturers' 20mm diameter batteries
- Molded notch prevents improper insertion of 2032 size cells
- Retains cells securely, withstands shock and vibration
- Polarity clearly marked
- Mounts securely for wave soldering
- Temperature range: -60°F to +293°F (-50°C to +145°C)

MATERIAL:

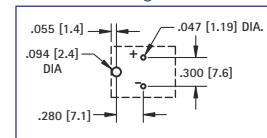
Contacts: .012 (.30) Spring Steel, Tin-Nickel Plate

Base: PBT, UL Rated 94V-0

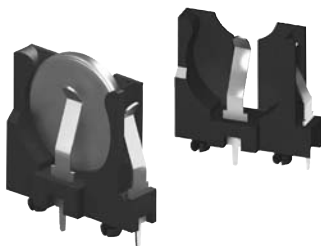
CAT. NO.	BATTERY REFERENCE
1067	CR2016, DL2020, CL2025, CR2032



Mounting Detail



VERTICAL SLIMLINE



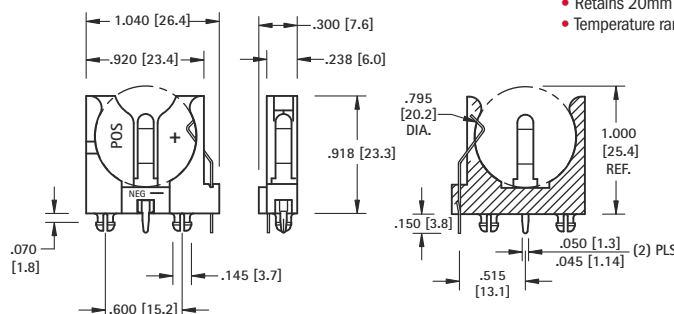
- Polarized holder
- Mounts securely for wave soldering
- Reliable spring tension assures low contact resistance
- Retains 20mm batteries securely to withstand shock and vibration
- Temperature range -60°F to +293°F (-50°C to +145°C)

MATERIAL:

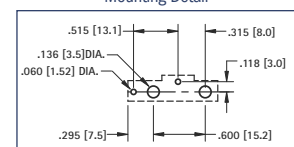
Contacts: .016 (.40) Spring Steel, Tin-Nickel Plate

Base: PBT, UL Rated 94V-0

CAT. NO.	BATTERY REFERENCE
1065	BR2012, CR2016, DL2020, CL2025, CR2032



Mounting Detail



THRU-HOLE (THM) & SURFACE MOUNT (SMT) COIN CELL HOLDERS

DESIGN ADVANTAGES...

- Reliable spring tension assures low contact resistance
- Retains battery securely to withstand shock and vibration
- All conductive polystyrene carrier tape meets ANSI/EIA - 481 standard

- Base material UL Rated 94V-0. Impervious to most industrial solvents
- Operating temperature range: -60°F to +293°F (-50°C to +145°C)

IDEALLY SUITED FOR...

- Computer memory, power transfer and back-up systems
- Video and telecommunications power back-up
- Microprocessors and Microcomputer memory hold (desktop and laptop applications)

- Industrial and commercial security and alarm systems
- Communications power sources
- PC/104 applications

20mm CELLS



- Polarity clearly marked (+)
- Compatible with vacuum and mechanical pick & place assembly systems
- Low profile for high density packaging
- Rugged construction, light weight
- SMT solder tail with "Flow-Hole" design for increased joint strength
- Viewable solder tails assures reliable joint inspection
- Safe for all soldering & reflow operations

MATERIAL:

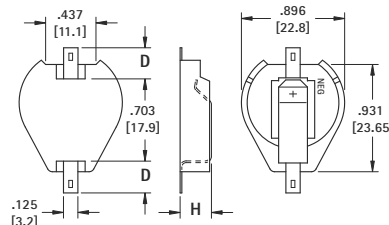
Contacts: .015 (.38) Steel

Base: High Temperature, Nylon 46, UL Rated 94V-0

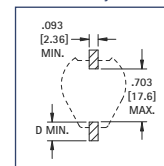
Tin-Nickel Plate		Gold Plate (Flash)		D	H	CELLS	BATTERY REFERENCE
CAT. NO. ON TAPE & REEL	CAT. NO. ON TAPE & REEL	CAT. NO. ON TAPE & REEL	CAT. NO. ON TAPE & REEL	PAD SIZE	HIEGHT		
1061	1061TR	1081	1081TR	.156 (4.0)	.290 (7.4)	(1) Cell (any 20mm)	CR2012, CL2016, BR2020, DL2032, CR2032
1063	1063TR	1093	1093TR	.278 (7.1)		(2) 2012, (2) 2016	
1062	1062TR	1082	1082TR	.156 (4.0)	.391 (9.9)	(2) 2020, (2) 2025, (2) 2032	
1064	1064TR	1094	1094TR	.278 (7.1)		(3) 2012, (3) 2016	

Tape & Reel Spec's: 44mm wide; 32mm pitch; 13 inch reel (200 pieces per reel)

AVAILABLE ON TAPE AND REEL



Pad Layout



Surface Mount

- Compatible with vacuum and mechanical pick & place assembly systems

MATERIAL:

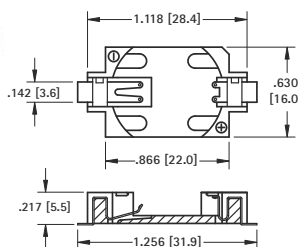
Contacts: .006 (.15) Phosphor Bronze, Gold Plate (Flash)

Base: Glass Filled LCP, UL Rated 94V-0

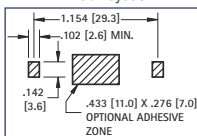
CAT. NO. BULK	ON TAPE & REEL	BATTERY REFERENCE
1060	1060TR	CR2025, DL2032

Tape & Reel Spec's: 44mm wide; 24mm pitch; 13 inch reel (500 pieces per reel)

AVAILABLE ON TAPE AND REEL

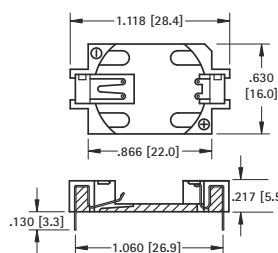


Pad Layout



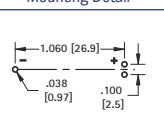
2025 / 2032 CELL

- Polarized Holders
- Low Profile for high density packaged PCB's
- Vertical entry



Thru Hole Mount

Mounting Detail



MATERIAL:

Contacts: .006 (.15) Phosphor Bronze, Tin Plate

Base: Glass Filled LCP, UL Rated 94V-0

CAT. NO.	BATTERY REFERENCE
1059	CR2025, DL2032

INSULATED RETAINERS



Surface Mount

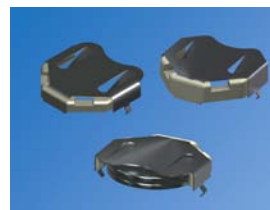
AVAILABLE ON TAPE AND REEL

- Ideal for 6 volt or 3 volt applications
- Two coin cell batteries can be installed in series
- Plastic insulator prevents shorting of battery, within the holder, when installed improperly

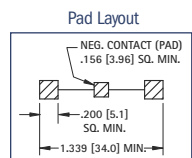
MATERIAL: **Contacts:** .010 (.25) Phosphor Bronze **Insulator:** High Temperature, Nylon 46, UL Rated 94V-0

20mm CELLS

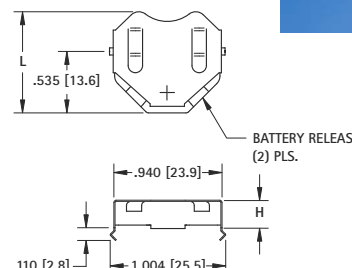
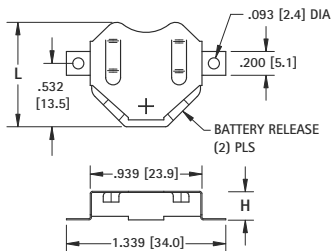
- Low profile
- Battery release ports for easy battery replacement
- Refer to pages 6 & 7 for a complete offering of coin cell retainers



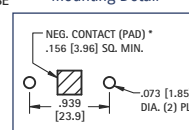
Thru Hole Mount



Pad Layout



Mounting Detail



Surface Mount			Thru Hole Mount		
Tin-Nickel Plate			Tin-Nickel Plate		
CAT. NO. LOOSE*	CAT. NO. BULK	ON TAPE & REEL	CAT. NO. LOOSE*	CAT. NO. BULK	ON TAPE & REEL
3020-2	3020	3020TR	3070-2	3070	3070TR
3022-2	3022	3022TR	3072-2	3072	3072TR
3024-2	3024	3024TR	3074-2	3074	3074TR

* Supplied Unassembled

Tape & Reel Spec's: 56mm wide; 28mm pitch; 13 inch reel: 3020TR, 3070TR 400 pieces per reel; 3022TR, 3072TR 250 pieces per reel; 3024TR, 3074TR 250 pieces per reel

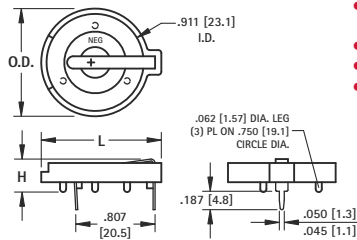
BATTERY REFERENCE		L	H
6 VOLT (2) CELLS	3 VOLT (1) CELL		
2012, 2016	2020, 2025	.890 (22.6)	.156 (4.0)
2020, 2025	2032	.877 (22.3)	.240 (6.1)
2032	Not Applicable	.877 (22.3)	.295 (7.5)

CAT. NO. LOOSE*	CAT. NO. BULK
3021-2	3021
3023-2	3023
3025-2	3025

THRU-HOLE (THM) & SURFACE MOUNT (SMT) COIN CELL HOLDERS

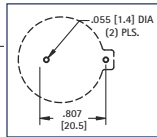
23mm

AVAILABLE ON TAPE AND REEL



- Polarity clearly marked (+)
- Rugged construction, light weight
- SMT solder tail with "Flow-Hole" design for increased joint strength
- Viewable solder tails assures reliable joint inspection
- Safe for all soldering & reflow operations
- Compatible with vacuum and mechanical pick & place assembly systems

Mounting Detail



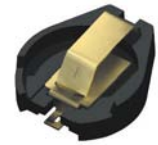
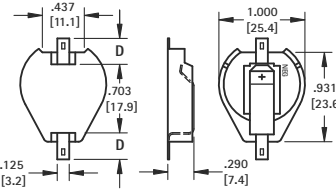
MATERIAL:

Contacts: .020 (.50) Spring Steel, Tin-Nickel Plate

Base: PBT, UL Rated 94V-0

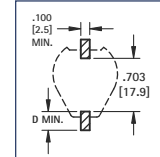
Operating Temperature: -60°F to +293°F (-50°C to +145°C)

CAT. NO.	H	L	O.D.	NO. OF CELLS	BATTERY REFERENCE
104	.335 (8.5)	1.150 (29.2)	1.000 (25.4)	(1) Cell (Any 23mm)	BR2320, CR2320, CL2325, DL2330, CL2354, CR2335
107	.335 (8.5)	1.219 (31.0)	1.093 (27.8)	(1) Cell (Any 23mm)	
1027	.452 (11.5)	1.219 (31.0)	1.093 (27.8)	(2) 2320, (2) 2325, (2) 2330	



Surface Mount

Pad Layout



MATERIAL:

Contacts: .015 (.38) Steel

Base: High Temp Nylon 46, UL Rated 94V-0

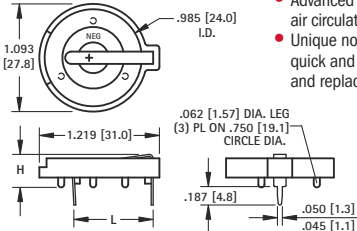
Operating Temperature: -60°F to +293°F (-50°C to +145°C)

Tin-Nickel Plate	Gold Plate (Flash)
CAT. NO. ON TAPE & REEL BULK	CAT. NO. ON TAPE & REEL BULK
1071	1071TR
1073	1073TR
1091	1091TR
1083	1083TR
D	PAD SIZE
.156 (4.0)	CR2320, CL2325,
.278 (7.1)	DL2330, CR2335

Tape & Reel Spec's: 44mm wide; 32mm pitch; 13 inch reel, (200 pieces per reel)

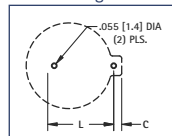
Note: All conductive polystyrene carrier tape meets ANSI/EIA - 481 standard

24mm



- Advanced air-flow design enhances air circulation around battery
- Unique notched slots assure quick and easy battery insertion and replacement

Mounting Detail



MATERIAL:

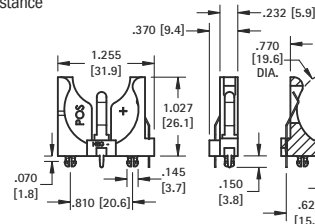
Base: PBT, UL Rated 94V-0

Contacts: .020 (.50) Spring Steel, Tin-Nickel Plate

Operating Temperature: -60°F to +293°F (-50°C to +145°C)

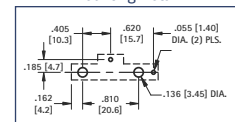
CAT. NO.	C	H	L	NO. OF CELLS	BATTERY REFERENCE
105	.064 (1.6)	.335 (8.5)	.805 (20.5)	(1) 2430	CR2430, CL2430, BR2450, CR2477
1025	.074 (1.9)	.452 (11.5)	.805 (20.5)	(2) 2430	
1025-7	.074 (1.9)	.503 (12.8)	.805 (20.5)	(1) 2477	
				(2) 2430	

- Polarized holder
- Mounts securely for wave soldering
- Reliable spring tension assures low contact resistance



Thru Hole Mount

Mounting Detail



MATERIAL:

Base: PBT, UL Rated 94V-0

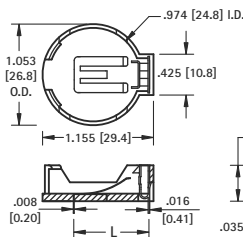
Contacts: .020 (.50) Spring Steel, Tin-Nickel Plate

Operating Temperature: -60°F to +293°F (-50°C to +145°C)

CAT. NO.	BATTERY REFERENCE
1068	(1) CR2450, (1) CL2450

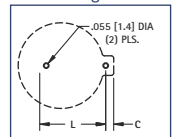
24mm TOP Loading

AVAILABLE ON TAPE AND REEL



- Battery "Pop-in" from Top for compact designs
- No tools required
- Finger pressure battery release

Mounting Detail



MATERIAL:

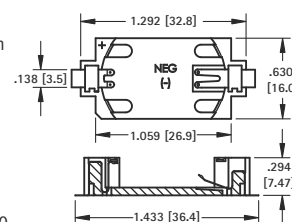
Contacts: Phosphor Bronze, Nickel Plate

Base: High Temp Nylon 46, UL Rated 94V-0

Operating Temperature: -60°F to +293°F (-50°C to +145°C)

CAT. NO.	L	C	BATTERY REFERENCE
1053	.788 (20.0)	.048 (1.2)	(1) CR2450

- Polarized holder
- Low profile for densely packed PCB's
- Compatible with vacuum and mechanical pick & place systems
- Conductive carrier tape meets ANSA/EIA- 481 standard



Surface Mount

MATERIAL:

Base: LCP, UL Rated 94V-0

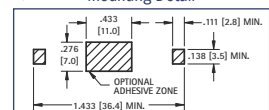
Contacts: .020 (.50) Spring Steel, Tin-Nickel Plate

Operating Temperature: -60°F to +293°F (-50°C to +145°C)

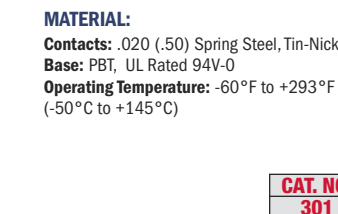
CAT. NO. ON TAPE & REEL BULK	BATTERY REFERENCE
1052	1052TR
	(1) CR2450

Tape & Reel Spec's: 56mm wide; 24mm pitch; 13 inch reel, (250 pieces per reel)

Mounting Detail



30mm



CAT. NO.	BATTERY REFERENCE
301	BR3032

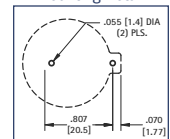
MATERIAL:

Contacts: .020 (.50) Spring Steel, Tin-Nickel Plate

Base: PBT, UL Rated 94V-0

Operating Temperature: -60°F to +293°F (-50°C to +145°C)

Mounting Detail



AMEYA360

Components Supply Platform

Authorized Distribution Brand :



Website :

Welcome to visit www.ameya360.com

Contact Us :

➤ Address :

401 Building No.5, JiuGe Business Center, Lane 2301, Yishan Rd
Minhang District, Shanghai , China

➤ Sales :

Direct +86 (21) 6401-6692

Email amall@ameya360.com

QQ 800077892

Skype ameyasales1 ameyasales2

➤ Customer Service :

Email service@ameya360.com

➤ Partnership :

Tel +86 (21) 64016692-8333

Email mkt@ameya360.com