



# WPB4001

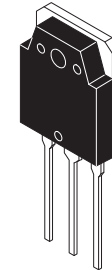
## N-Channel Power MOSFET 500V, 26A, 0.26Ω, TO-3P-3L

ON Semiconductor®

<http://onsemi.com>

### Features

- ON-resistance  $R_{DS(on)}=0.2\Omega$  (typ.)
- Input capacitance  $C_{iss}=2250\text{pF}$  (typ.)
- 10V Drive



TO-3P-3L

### Specifications

#### Absolute Maximum Ratings at $T_a=25^\circ\text{C}$

Parameter	Symbol	Conditions	Ratings	Unit
Drain to Source Voltage	$V_{DSS}$		500	V
Gate to Source Voltage	$V_{GSS}$		$\pm 30$	V
Drain Current (DC)	$I_D$		26	A
Drain Current (Pulse)	$I_{DP}$	$PW \leq 10\mu\text{s}$ , duty cycle $\leq 1\%$	90	A
Source to Drain Diode Forward Current (DC)	$I_{SD}$		26	A
Source to Drain Diode Forward Current (Pulse)	$I_{SDP}$	$PW \leq 10\mu\text{s}$ , duty cycle $\leq 1\%$	90	A
Allowable Power Dissipation	$P_D$		2.5	W
		$T_c=25^\circ\text{C}$	220	W
Channel Temperature	$T_{ch}$		150	$^\circ\text{C}$
Storage Temperature	$T_{stg}$		-55 to +150	$^\circ\text{C}$
Avalanche Energy (Single Pulse) *1	$E_{AS}$		543	mJ
Avalanche Current *2	$I_{AV}$		14	A

Note : \*1  $V_{DD}=50\text{V}$ ,  $L=5\text{mH}$ ,  $I_{AV}=14\text{A}$  (Fig.1)\*2  $L \leq 5\text{mH}$ , single pulse

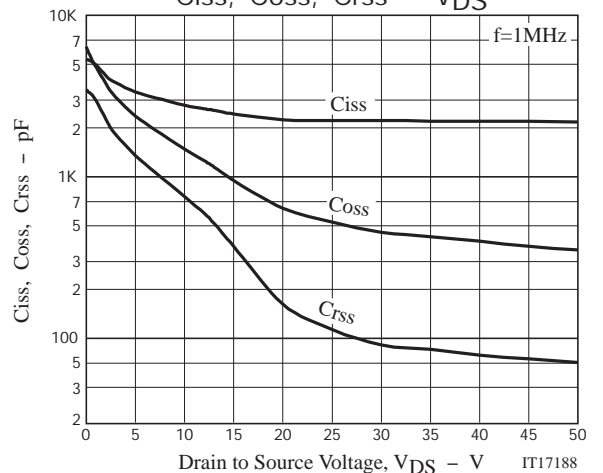
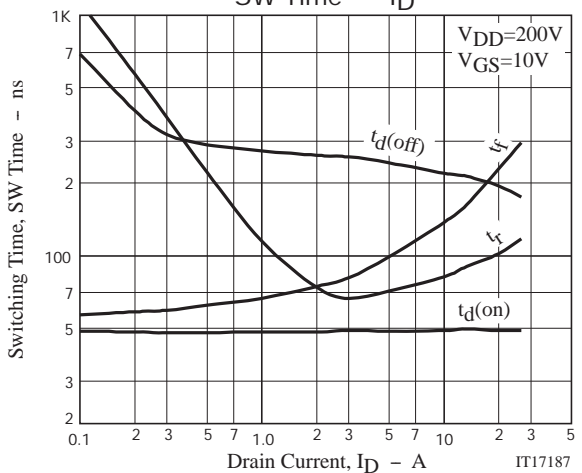
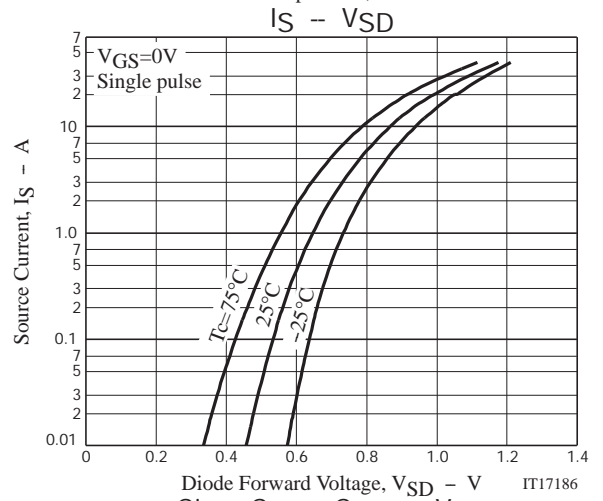
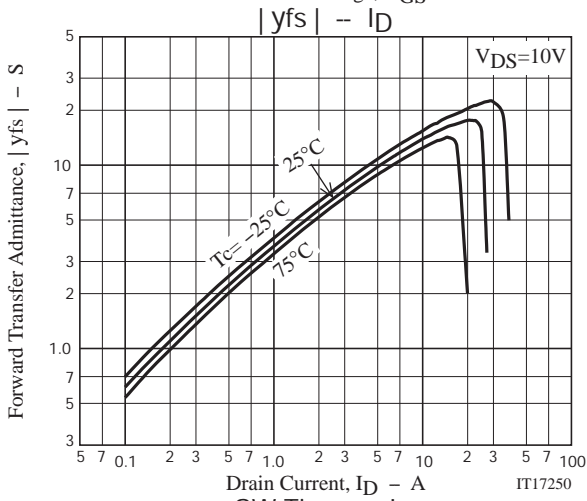
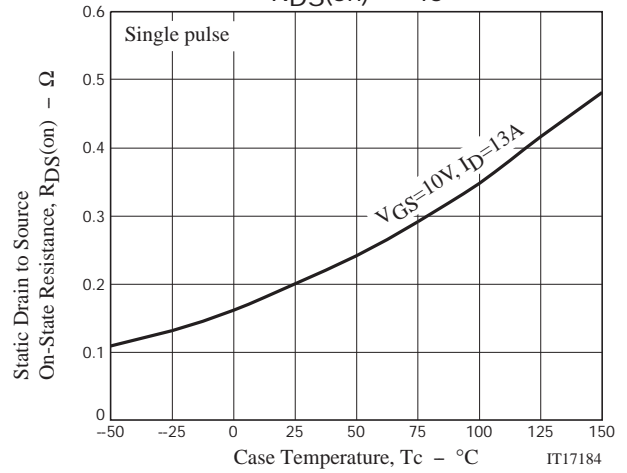
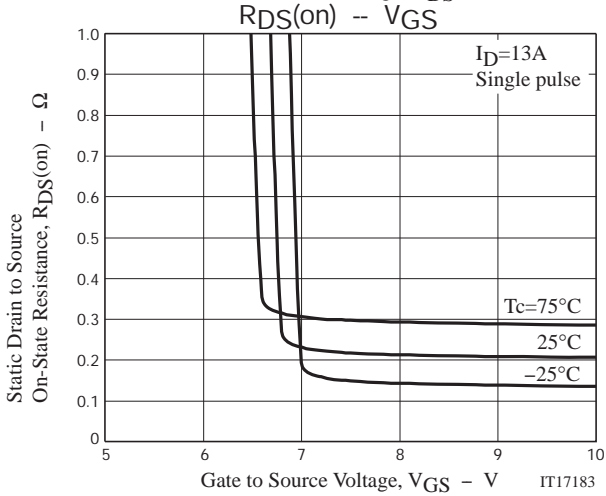
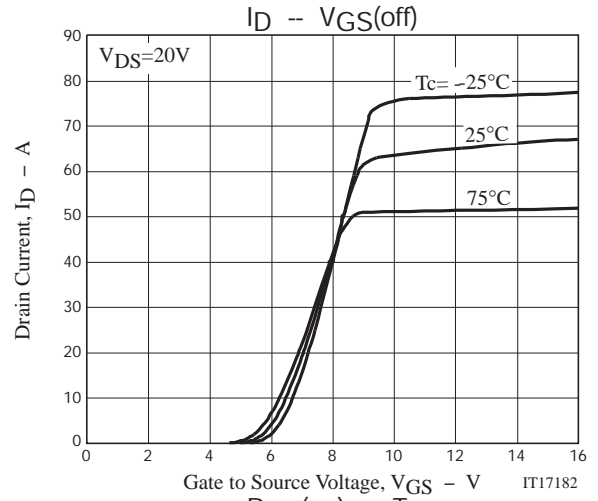
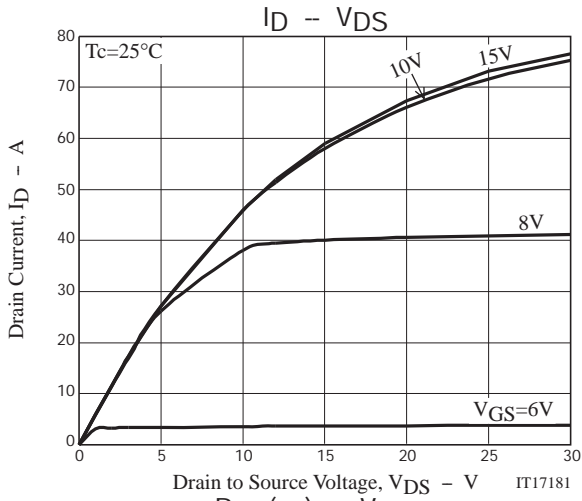
Stresses exceeding Maximum Ratings may damage the device. Maximum Ratings are stress ratings only. Functional operation above the Recommended Operating Conditions is not implied. Extended exposure to stresses above the Recommended Operating Conditions may affect device reliability.

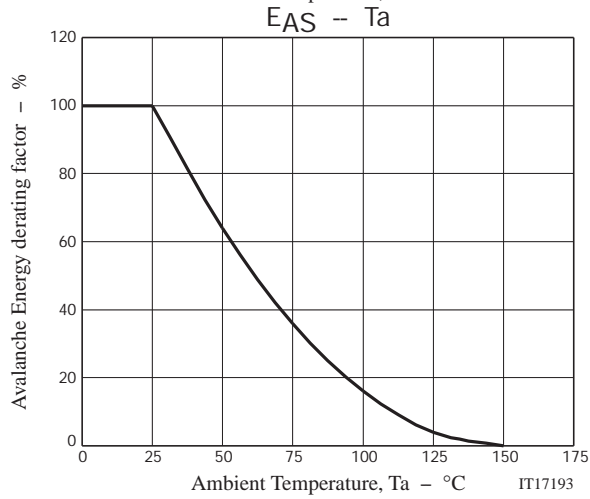
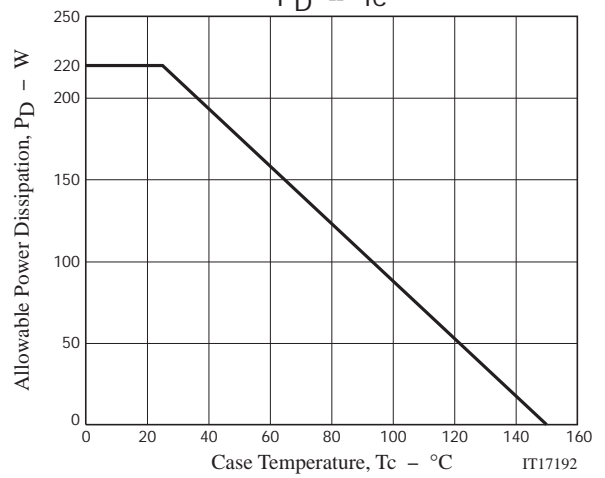
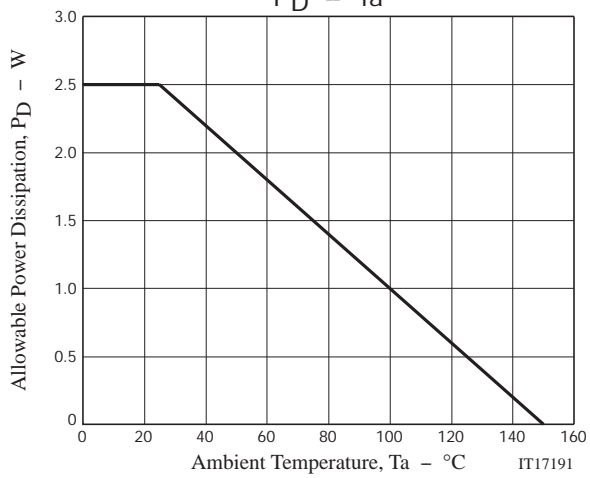
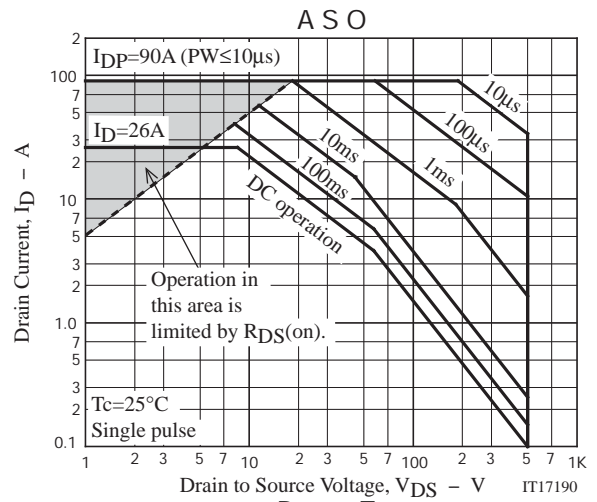
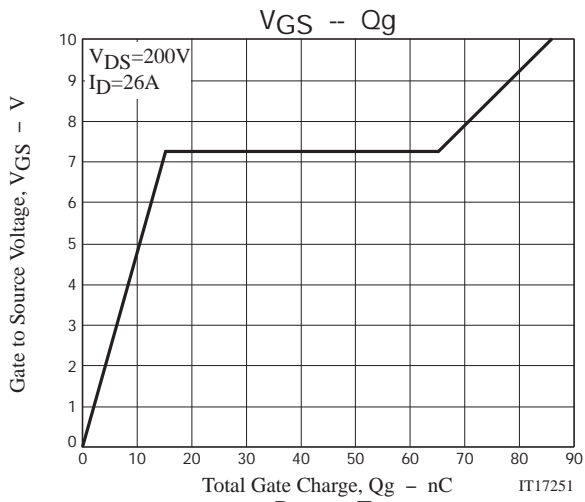
#### Electrical Characteristics at $T_a=25^\circ\text{C}$

Parameter	Symbol	Conditions	Ratings			Unit	
			min	typ	max		
Drain to Source Breakdown Voltage	$V_{(BR)DSS}$	$I_D=10\text{mA}$ , $V_{GS}=0\text{V}$	500			V	
Zero-Gate Voltage Drain Current	$I_{DSS}$	$V_{DS}=400\text{V}$ , $V_{GS}=0\text{V}$			100	$\mu\text{A}$	
Gate to Source Leakage Current	$I_{GSS}$	$V_{GS}=\pm 30\text{V}$ , $V_{DS}=0\text{V}$			$\pm 100$	nA	
Cutoff Voltage	$V_{GS(off)}$	$V_{DS}=10\text{V}$ , $I_D=1\text{mA}$	3		5	V	
Forward Transfer Admittance	$ y_{fs} $	$V_{DS}=10\text{V}$ , $I_D=13\text{A}$	7.5	15.5		S	
Static Drain to Source On-State Resistance	$R_{DS(on)}$	$I_D=13\text{A}$ , $V_{GS}=10\text{V}$		0.20	0.26	$\Omega$	
Input Capacitance	$C_{iss}$	$V_{DS}=30\text{V}$ , $f=1\text{MHz}$		2250		pF	
Output Capacitance	$C_{oss}$				450		pF
Reverse Transfer Capacitance	$C_{rss}$				90		pF
Turn-ON Delay Time	$t_{d(on)}$				44		ns
Rise Time	$t_r$	See Fig.2		156		ns	
Turn-OFF Delay Time	$t_{d(off)}$				224		ns
Fall Time	$t_f$				94		ns
Total Gate Charge	$Q_g$	$V_{DS}=200\text{V}$ , $V_{GS}=10\text{V}$ , $I_D=26\text{A}$		87		nC	
Gate to Source Charge	$Q_{gs}$				15.2		nC
Gate to Drain "Miller" Charge	$Q_{gd}$				50		nC
Diode Forward Voltage	$V_{SD}$	$I_S=26\text{A}$ , $V_{GS}=0\text{V}$		1.1	1.5	V	
Reverse Recovery Time	$t_{rr}$	See Fig.3		115		ns	
Reverse Recovery Charge	$Q_{rr}$	$I_{SD}=26\text{A}$ , $V_{GS}=0\text{V}$ , $di/dt=100\text{A}/\mu\text{s}$		340		nC	

### ORDERING INFORMATION

See detailed ordering and shipping information on page 4 of this data sheet.





# WPB4001

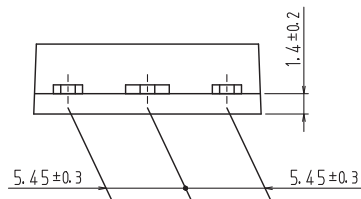
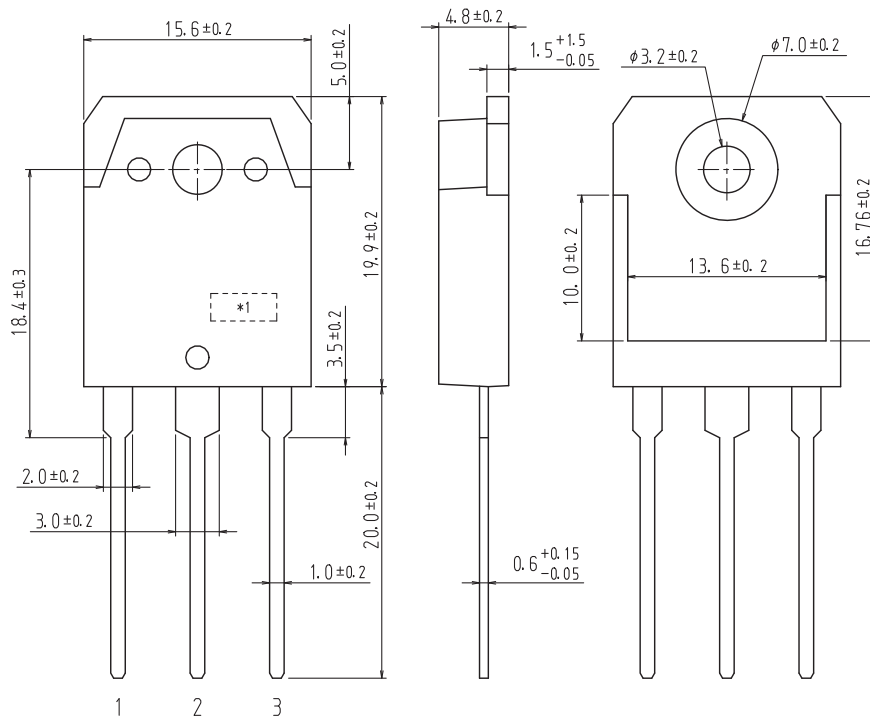
## Package Dimensions

WPB4001-1E

TO-3P-3L  
CASE 340AF  
ISSUE O

Unit : mm

- 1: Gate
- 2: Drain
- 3: Source



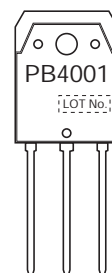
These dimension do not include mold protrusion

\*1: Lot indication

## Ordering & Package Information

Device	Package	Shipping	memo
WPB4001-1E	TO-3P-3L SC-65, SOT-199, TO-247	30 pcs./tube	Pb-Free

## Marking



## Electrical Connection

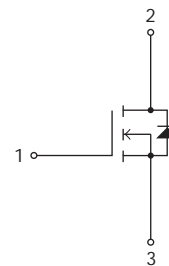


Fig.1 Unclamped Inductive Switching Test Circuit

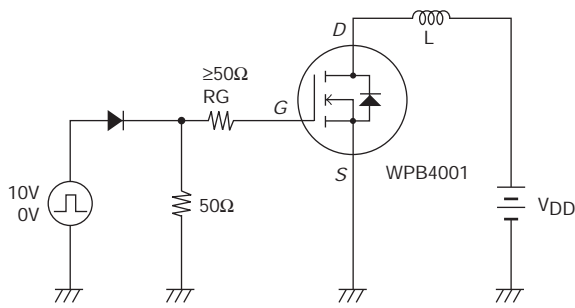


Fig.2 Switching Time Test Circuit

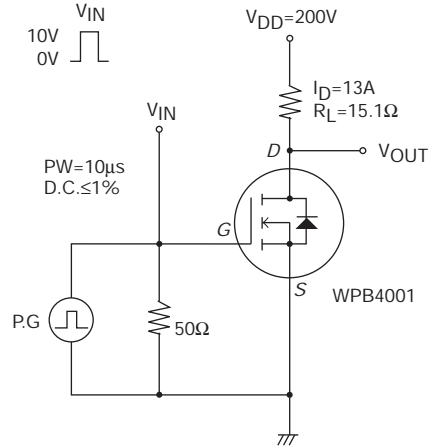
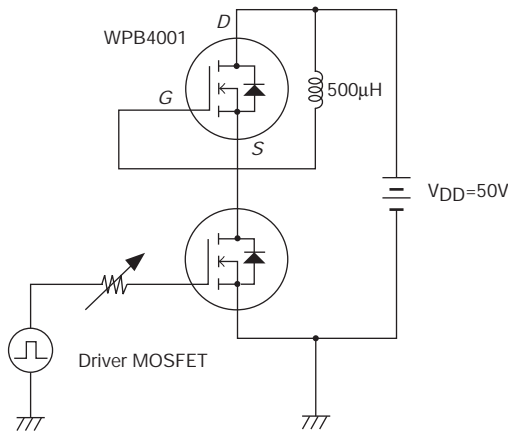


Fig.3 Reverse Recovery Resistance Test Circuit



Note on usage : Since the WPB4001 is a MOSFET product, please avoid using this device in the vicinity of highly charged objects.

ON Semiconductor and the ON logo are registered trademarks of Semiconductor Components Industries, LLC (SCILLC). SCILLC owns the rights to a number of patents, trademarks, copyrights, trade secrets, and other intellectual property. A listing of SCILLC's product/patent coverage may be accessed at [www.onsemi.com/site/pdf/Patent-Marking.pdf](http://www.onsemi.com/site/pdf/Patent-Marking.pdf). SCILLC reserves the right to make changes without further notice to any products herein. SCILLC makes no warranty, representation or guarantee regarding the suitability of its products for any particular purpose, nor does SCILLC assume any liability arising out of the application or use of any product or circuit, and specifically disclaims any and all liability, including without limitation special, consequential or incidental damages. "Typical" parameters which may be provided in SCILLC data sheets and/or specifications can and do vary in different applications and actual performance may vary over time. All operating parameters, including "Typicals" must be validated for each customer application by customer's technical experts. SCILLC does not convey any license under its patent rights nor the rights of others. SCILLC products are not designed, intended, or authorized for use as components in systems intended for surgical implant into the body, or other applications intended to support or sustain life, or for any other application in which the failure of the SCILLC product could create a situation where personal injury or death may occur. Should Buyer purchase or use SCILLC products for any such unintended or unauthorized application, Buyer shall indemnify and hold SCILLC and its officers, employees, subsidiaries, affiliates, and distributors harmless against all claims, costs, damages, and expenses, and reasonable attorney fees arising out of, directly or indirectly, any claim of personal injury or death associated with such unintended or unauthorized use, even if such claim alleges that SCILLC was negligent regarding the design or manufacture of the part. SCILLC is an Equal Opportunity/Affirmative Action Employer. This literature is subject to all applicable copyright laws and is not for resale in any manner.

# AMEYA360

## Components Supply Platform

### Authorized Distribution Brand :



### Website :

Welcome to visit [www.ameya360.com](http://www.ameya360.com)

### Contact Us :

#### ➤ Address :

401 Building No.5, JiuGe Business Center, Lane 2301, Yishan Rd  
Minhang District, Shanghai , China

#### ➤ Sales :

Direct +86 (21) 6401-6692

Email [amall@ameya360.com](mailto:amall@ameya360.com)

QQ 800077892

Skype [ameyasales1](#) [ameyasales2](#)

#### ➤ Customer Service :

Email [service@ameya360.com](mailto:service@ameya360.com)

#### ➤ Partnership :

Tel +86 (21) 64016692-8333

Email [mkt@ameya360.com](mailto:mkt@ameya360.com)