

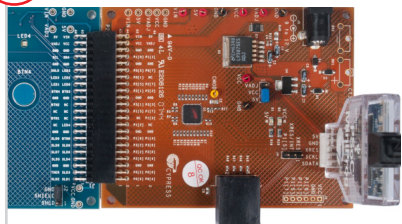
1



1. Insert the kit CD in the CD drive.
2. Install the kit contents, PSoC Designer, and PSoC Programmer.
3. The hardware prerequisites for this kit are the CY3280-20x34\* Universal CapSense Controller (UCC) board and MiniProg1.

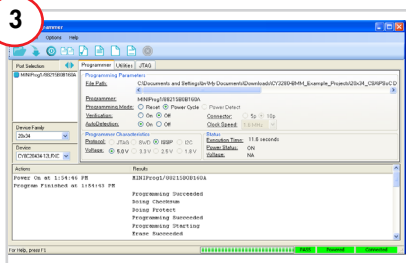
\* **Note** The ordering part number for CY3280-20x34 UCC is CY3280 - BK1.

2



1. Connect the CY3280-SLM board to the CY3280-20x34 UCC board's P2 connector.
2. In the CY3280-20x34 board, place the jumper on header J1 to short pins 2 and 3.
3. In the CY3280-SLM board, place the jumper on header J2 to short pins 2 and 3.

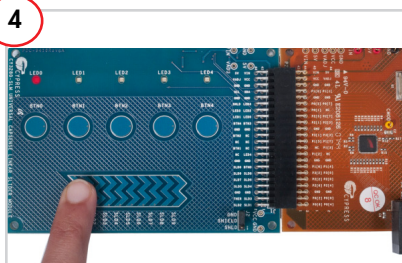
3



1. Connect MiniProg1 to the CY3280-20x34 UCC Board's ISSP connector (J3). Connect it to your PC using a USB cable.
2. Open PSoC Programmer and click File>File Load. Browse and load the *CY3280\_20x34\_PD\_Project1.hex* file\*.
3. Click Connect; connect MiniProg1 to PC.
4. Click Program button to program the device.
5. Click Toggle button to power the board.

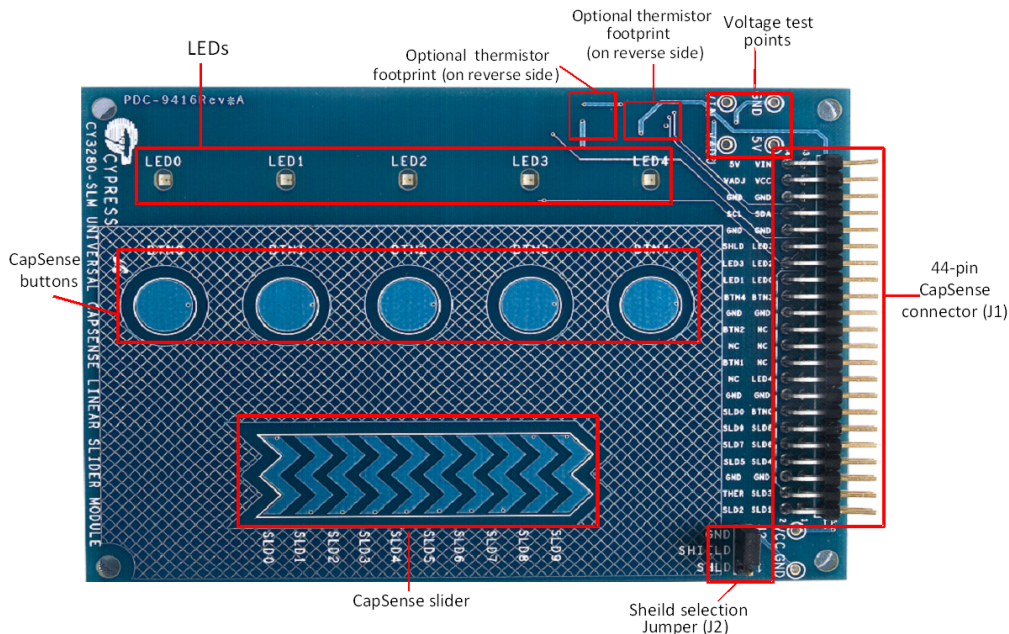
\* **Note** These files are located at: <Install directory>\Cypress\CY3280-SLM\<version>\Firmware

4



1. Touch and move the linear slider on the CY3280-SLM module board. The corresponding LEDs on the CY3280-SLM board light up.
2. Touch a button. The corresponding LED on the CY3280-SLM module board lights up.
3. You can touch multiple buttons at the same time. The linear slider and buttons can be used at the same time.

## CY3280-SLM Kit Details



### Notes

- For more details on code examples, refer to the PDF file along with the project in the Firmware folder (for example, *21x34\_CSD PD project 1.pdf*) in the following directory:  
<Install directory> \Cypress\CY3280-SLM\<version>\Firmware\21x34\_CSD\PD project 1.
- CY3280-SLM can be used with any of the following UCCs:
  1. CY3280- 20x66
  2. CY3280- 24x94
  3. CY3280- 21x34 (ordering part number is CY3280-BK1)

For the latest information about this kit visit  
[www.cypress.com/go/CY3280-SLM](http://www.cypress.com/go/CY3280-SLM)



# AMEYA360

## Components Supply Platform

Authorized Distribution Brand :



Website :

Welcome to visit [www.ameya360.com](http://www.ameya360.com)

Contact Us :

➤ Address :

401 Building No.5, JiuGe Business Center, Lane 2301, Yishan Rd  
Minhang District, Shanghai , China

➤ Sales :

Direct +86 (21) 6401-6692

Email [amall@ameya360.com](mailto:amall@ameya360.com)

QQ 800077892

Skype ameyasales1 ameyasales2

➤ Customer Service :

Email [service@ameya360.com](mailto:service@ameya360.com)

➤ Partnership :

Tel +86 (21) 64016692-8333

Email [mkt@ameya360.com](mailto:mkt@ameya360.com)