

TPS7A30-49EVM-567

This user's guide describes the characteristics, operation, and use of the TPS7A30-49EVM-567 Evaluation Module (EVM) as a reference design to facilitate engineering evaluation of the TPS7A3001 negative voltage low-dropout (LDO) regulator and/or the TPS7A4901 positive voltage LDO regulator for individual or split-rail applications. Included in this user's guide are setup instructions, a schematic diagram, layout and thermal guidelines, a bill of materials, and test results.

Contents

1	Introduction	2
2	Setup	2
2.1	Negative Voltage Input/Output Connectors and Jumper Descriptions For TPS7A3001 LDO Circuit	2
2.2	Positive Voltage Input/Output Connectors and Jumper Descriptions fo the TPS7A4901 LDO Circuit	2
2.3	Soldering Guidelines	2
2.4	Equipment Interconnect	3
3	Operation	3
4	Adjustable Operation	3
5	Test Results	4
5.1	Turnon Output Ramp: Negative Voltage LDO, TPS7A3001 Circuit	4
5.2	Turnon Output Ramp: Positive Voltage LDO, TPS7A4901 Circuit	5
5.3	–VOUT Load Transient Applied to the Negative LDO Circuit, TPS7A3001	5
5.4	+VOUT Load Transient Applied to the Positive LDO Circuit, TPS7A4901.	6
6	Thermal Guidelines	7
7	Board Layout	8
8	Schematic and Bill of Materials	11
8.1	Schematic	11
8.2	Bill of Materials	12

List of Figures

1	LDO Schematic Showing the R ₁ and R ₂ Adjustment Resistors	3
2	TPS7A3001 –VOUT Ramp at Turnon.....	4
3	TPS7A4901 +VOUT Ramp at Turnon.....	5
4	TPS7A3001 –VOUT Load Transient	6
5	TPS7A4901 +VOUT Load Transient	7
6	Assembly Layer	8
7	Top Layer Routing	9
8	Bottom Layer Routing.....	10
9	TPS7A30-49EVM-567 Schematic.....	11

List of Tables

1	Thermal Resistance, θ_{JA} , and Maximum Power Dissipation.....	8
2	TPS7A30-49EVM-567 Bill of Materials	12

1 Introduction

The Texas Instruments TPS7A30-49EVM-567 EVM helps designers evaluate the operation and performance of the TPS7A3001 and/or the TPS7A4901 LDO regulator for possible use in their circuit applications. This particular EVM configuration is preconfigured to output -15 Vdc and $+15\text{ Vdc}$ for ease of demonstration in certain standard industrial applications, e.g., requiring positive and negative voltages to power an operational amplifier-based, signal-conditioning circuitry. Alternatively, each LDO channel can be adjusted individually to any output voltage between 1.2 V and 33 V (negative and positive, respectively) as required by only changing a resistor value in accordance with the given equation. The TPS7A3001 can supply up to 200-mA -rated load current and the TPS7A4901 can supply up to 150 mA each using the MSOP-8, PowerPAD™ package. Both circuits have been optimized for ac performance including PSRR and load transient response using capacitors rated over the full voltage range of each regulator.

2 Setup

This section describes the jumpers and connectors on the EVM as well as how to properly connect, set up, and use the TPS7A30-49EVM-567.

2.1 Negative Voltage Input/Output Connectors and Jumper Descriptions For TPS7A3001 LDO Circuit

- **J1 (-VIN)** – The negative input supply voltage connector. Twist the negative input lead and ground lead, and keep them as short as possible to minimize EMI transmission. Additional bulk aluminum electrolytic capacitance must be added/connected between J1 and J2 if the supply leads are greater than 6 inches. An additional $47\text{-}\mu\text{F}$ or greater capacitor improves the transient response and reduces parasitic ringing due to long wire connections.
- **J2 (GND)** – Ground-return connection for the negative input power supply.
- **J3 (EN)** – Negative voltage, output enable. To enable the negative voltage output, connect a jumper between ON, pin 1 to EN, pin 2. To disable the negative voltage output, connect the jumper between EN, center pin 2 and OFF, pin 3.
- **J4 (-VOUT)** – Negative voltage, output connector.
- **J5 (GND)** – Negative voltage output ground-return connector.

2.2 Positive Voltage Input/Output Connectors and Jumper Descriptions fo the TPS7A4901 LDO Circuit

- **J6 (+VIN)** – The positive input supply voltage connector. Twist the positive input lead and ground lead, and keep them as short as possible to minimize EMI transmission. Additional bulk aluminum electrolytic capacitance must be added/connected between J6 and J7 if the supply leads are greater than 6 inches. An additional $47\text{-}\mu\text{F}$ or greater capacitor improves the transient response and reduces parasitic ringing due to long wire connections.
- **J7 (GND)** – Ground-return connection for the positive input power supply.
- **J8 (EN)** – Positive voltage, output enable. To enable the positive voltage output, connect a jumper between ON, pin 1 to EN, pin 2. To disable the positive voltage output, connect the jumper between EN, center pin 2 and OFF, pin 3.
- **J9 (+VOUT)** – Negative voltage, output connector.
- **J10 (GND)** – Positive voltage output ground-return connector.

2.3 Soldering Guidelines

Any solder re-work to modify the EVM for the purpose of repair or other application reasons must be performed using a hot-air system to avoid damaging the integrated circuit (IC).

2.4 Equipment Interconnect

2.4.1 Negative Voltage LDO, TPS7A3001, Interconnect

- **Negative Input Supply Voltage:** Turn off the negative input power supply after verifying that its output voltage is greater than -35 V. Connect the negative voltage lead from the negative side of the supply to the J1 ($-VIN$) connector of the EVM. Connect the ground lead from the positive side of the power supply to J2 (GND) of the EVM.
- Connect a 0-mA to 200-mA load between the negative output, J4 ($-VOUT$) and the negative output return at J5 (GND).

2.4.2 Positive Voltage LDO, TPS7A4901, Interconnect

- **Positive Input Supply Voltage:** Turn off the positive input power supply after verifying that its output voltage is less than $+35$ V. Connect the positive voltage lead from the positive side of the supply to the J6 ($+VIN$) connector of the EVM. Connect the ground lead from the negative side of the power supply to J7 (GND) of the EVM.
- Connect a 0-mA to 150-mA load between the positive output, J9 ($+VOUT$), and the negative output return at J10 (GND).

3 Operation

- Turn on the negative voltage input power supply to J1 ($-VIN$). For initial operation, it is recommended that the negative input power supply be set to -18 V.
- Enable the negative output, $-VOUT$, as desired by connecting the J3 jumper between ON and EN.
- Vary the load and the voltage at $-VIN$ as necessary for test purposes.
- Turn on the positive voltage input power supply to J6 ($+VIN$). For initial operation, it is recommended that the positive input power supply be set to $+18$ V.
- Enable the positive output, $+VOUT$, as desired by connecting the J8 jumper between ON and EN.
- Vary the load and the voltage at $+VIN$ as necessary for test purposes.

4 Adjustable Operation

The nominal output voltage for the typical LDO circuit employing the TPS7A3001 or the TPS7A4901 is set by two external resistors, R_1 and R_2 , as illustrated in [Figure 1](#). R_1 and R_2 can be calculated for any output voltage using the equation shown in [Equation 1](#) and by finding the V_{ref} voltage found in the respective data sheet in the Electrical Characteristics table.

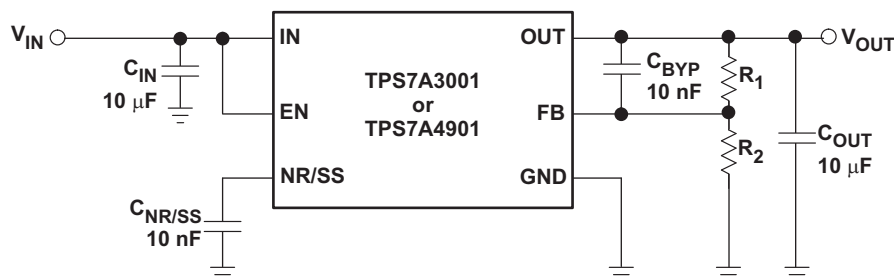


Figure 1. LDO Schematic Showing the R_1 and R_2 Adjustment Resistors

$$R_2 = R_1 \div [(V_{OUT}/V_{FB}) - 1] \quad \text{Where } V_{OUT} / (R_1 + R_2) \geq 5 \mu\text{A} \quad (1)$$

Once the resistor values have been calculated, the new resistors can be installed appropriately in the correct place using the printed-circuit board (PCB) and schematic diagrams of [Figure 5](#) and [Figure 8](#).

Suggestion: When recalculating the resistor values for a particular desired output voltage, change only the R_2 value in order to maintain that the frequency domain zero formed by R_1 and C_{BYP} are in accordance with [Equation 2](#).

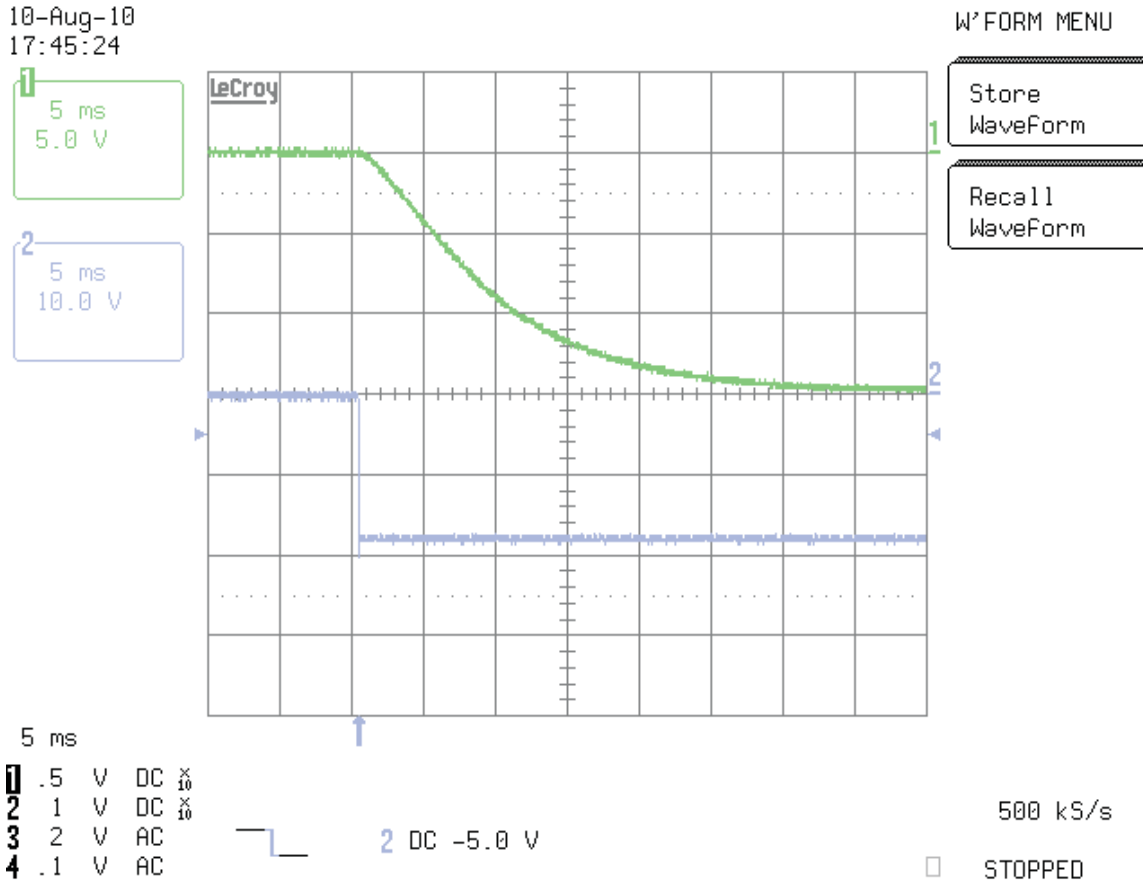
$$F_z = 1/(2 \times \pi \times R_1 \times C_{BYP}) \quad (2)$$

5 Test Results

This section provides typical performance waveforms for the TLV710xxEVM PCB.

5.1 Turnon Output Ramp: Negative Voltage LDO, TPS7A3001 Circuit

Figure 2 shows the turnon waveforms where the Enable is connected to the $-V_{IN}$. The $-V_{IN}$ turnon voltage steps down to -18 V (shown on Ch2 of the Figure 2 plot) followed by the $-V_{OUT}$ which ramps down -15 V . This negative-going turnon ramp represents the effects of both the soft-start capacitor, C_{SS} , as well as the soft-start effect contributed by the bypass capacitor, C_{BYP} , across the upper feedback resistor.

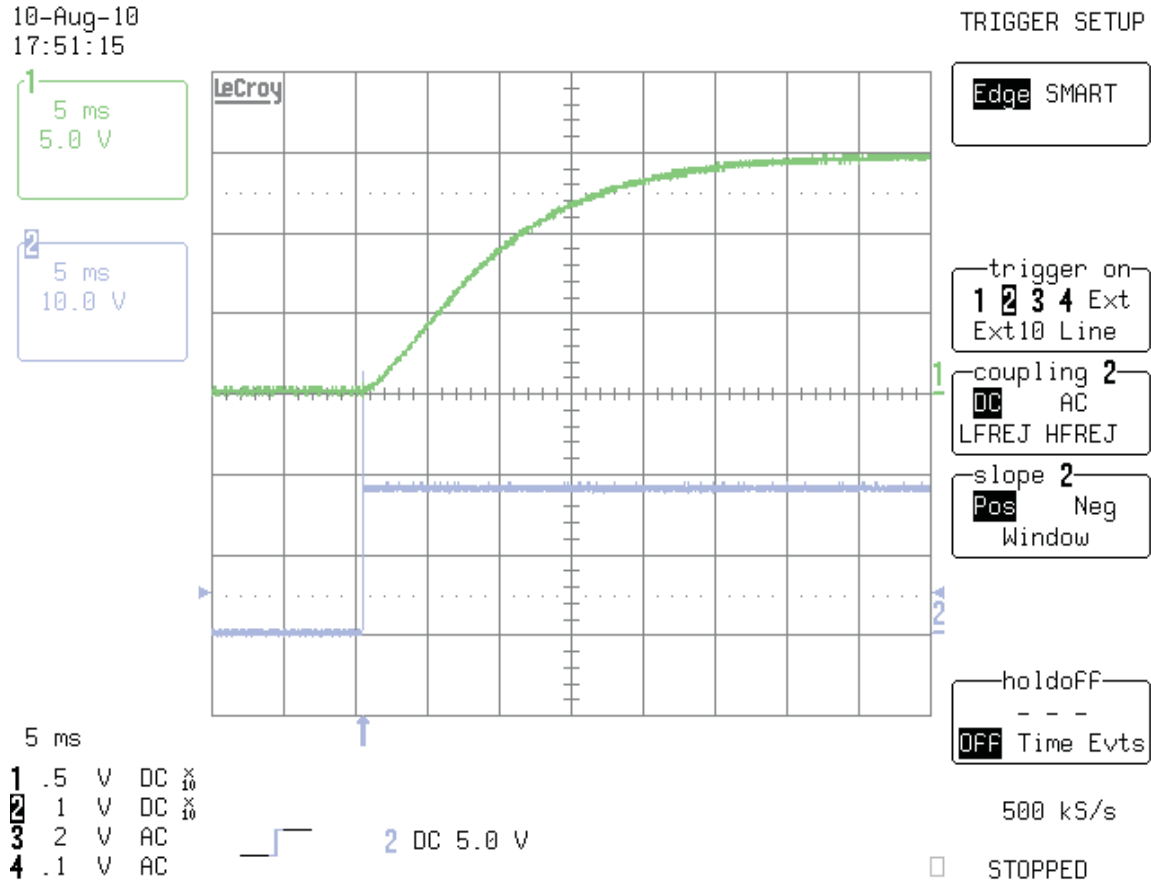


Ch1(-VOUT), Ramp Down to -15.V, and Ch2 (-VIN), Input Step Turnon Voltage to -18V.

Figure 2. TPS7A3001 -VOUT Ramp at Turnon

5.2 Turnon Output Ramp: Positive Voltage LDO, TPS7A4901 Circuit

Figure 3 shows the turnon waveforms where the Enable is connected to the +VIN. The +VIN turnon voltage steps to +18 V (shown on Ch2 of the Figure 2 plot) followed by the +VOUT ramp up to +15 V. This positive-going turnon ramp represents the effects of both the soft-start capacitor, C_{SS} , as well as the soft-start effect contributed by the bypass capacitor, C_{BYP} , across the upper feedback resistor.

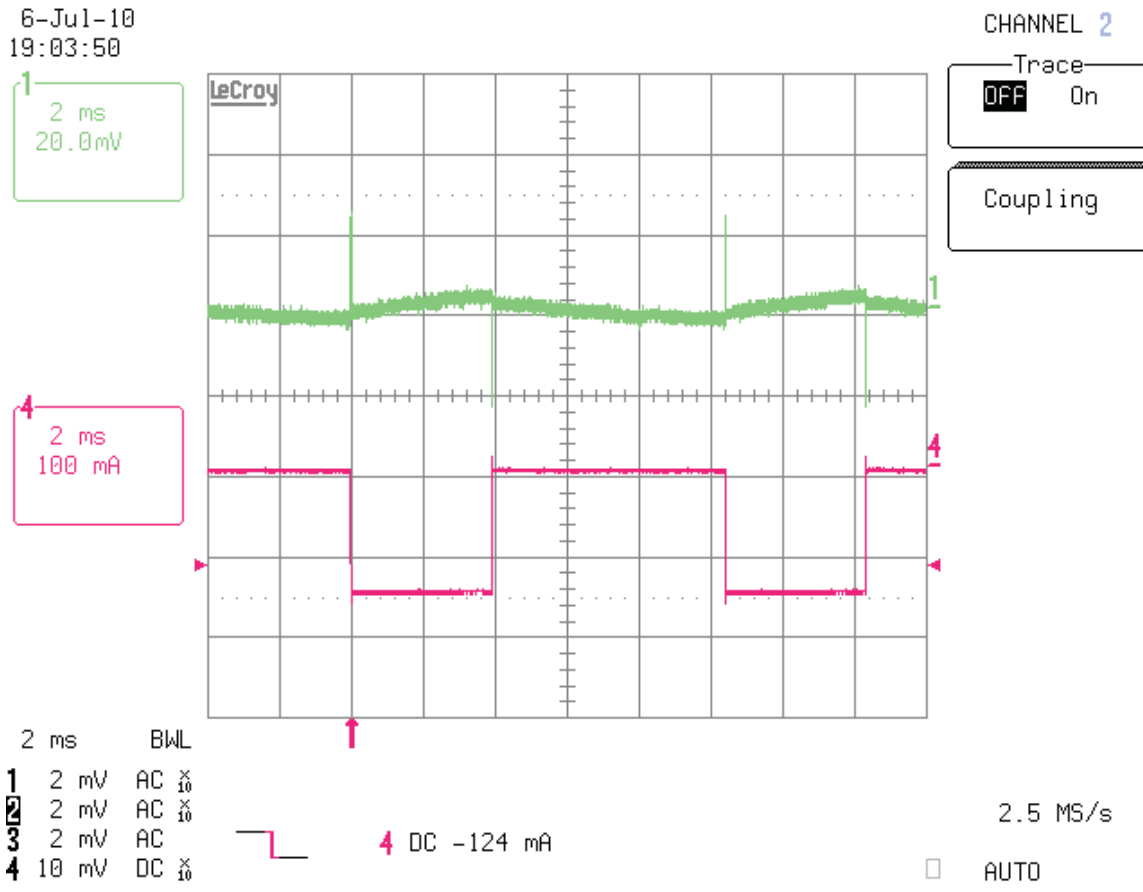


Ch1(+VOUT), Ramp Up to +15.V, and Ch2 (+VIN), Input Step Turnon Voltage to +18V

Figure 3. TPS7A4901 +VOUT Ramp at Turnon

5.3 -VOUT Load Transient Applied to the Negative LDO Circuit, TPS7A3001

Figure 4 shows the load transient response – oscilloscope channel 1 – for a 10-mA to 150-mA load transient applied to -VOUT (-15-V output). Oscilloscope channel 4 shows the load current transient.

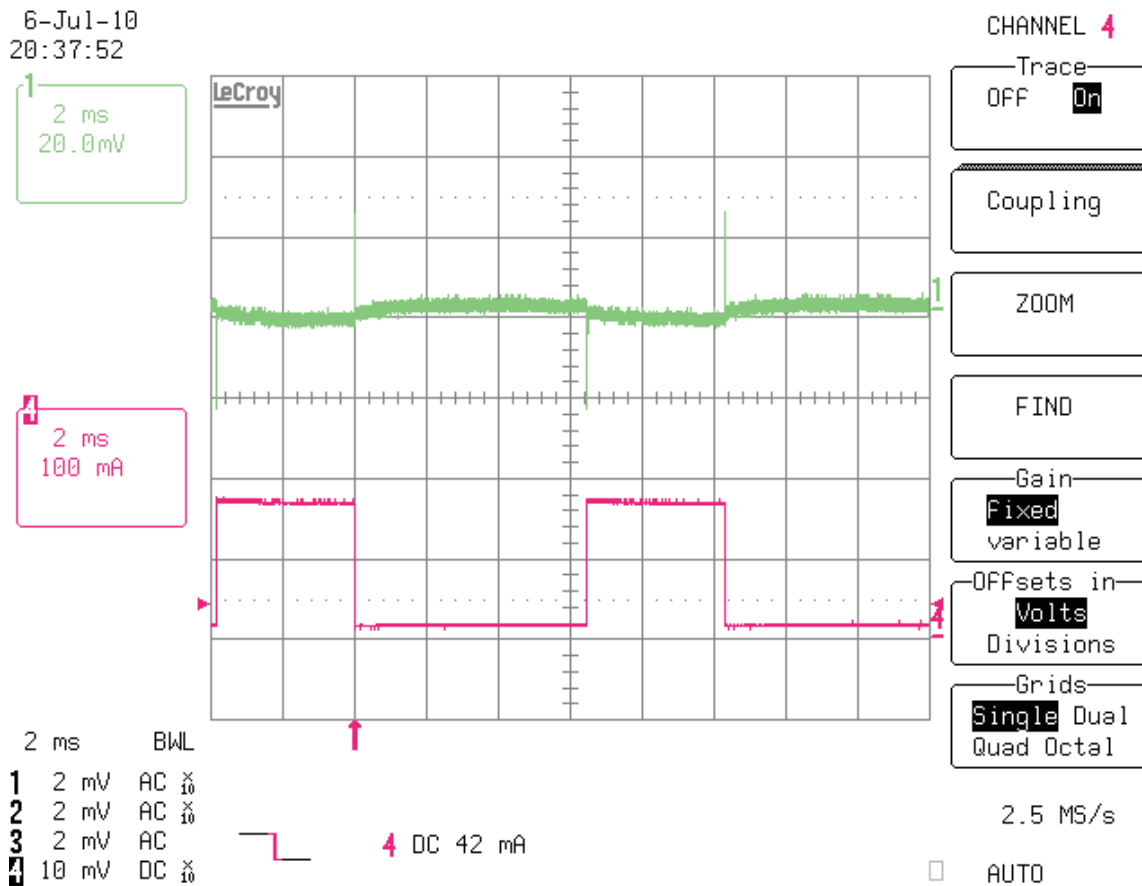


Ch 1 (-VOUT) Voltage Transient Response, Ch 2 Applied Current Step Transient (10mA – 150mA)

Figure 4. TPS7A3001 –VOUT Load Transient

5.4 +VOUT Load Transient Applied to the Positive LDO Circuit, TPS7A4901.

Figure 5 shows the load transient response – oscilloscope channel 1 – for a 10-mA to 150-mA load transient applied to +VOUT (+15-V output). Oscilloscope channel 4 shows the load current transient.



Ch 1 (+VOUT) Voltage Transient Response, Ch 2 Applied Current Step Transient (10mA – 150mA)

Figure 5. TPS7A4901 +VOUT Load Transient

6 Thermal Guidelines

Thermal management is a key component of design of any power converter and is especially important when the power dissipation in the LDO is high. Use the following formula to approximate the maximum power dissipation for the particular ambient temperature:

$$T_J = T_A + P_D \times \theta_{JA} \quad (3)$$

where T_J is the junction temperature, T_A is the ambient temperature, P_D is the power dissipation in the device, and θ_{JA} is the thermal resistance from junction to ambient. All temperatures are in degrees Celsius. The maximum silicon junction temperature, T_J , must not be allowed to exceed 150°C. The layout design must make effective use of the copper trace and plane areas as thermal sinks. This prevents T_J from exceeding the absolute maximum rating under all temperature conditions and voltage conditions across the part.

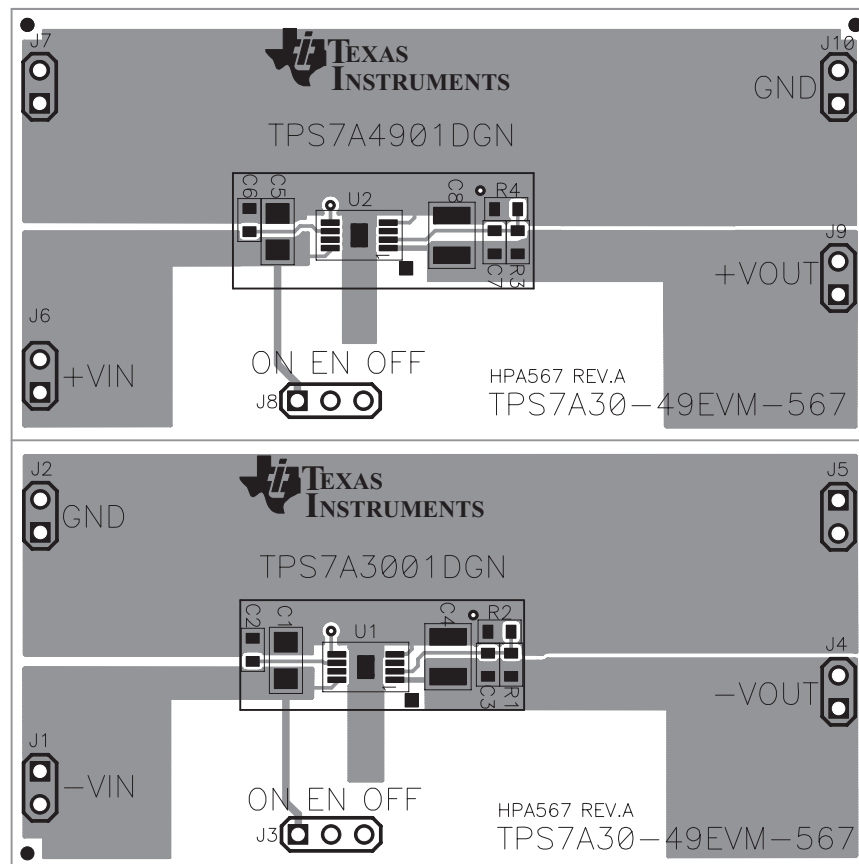
The designer must carefully consider the thermal design of the PCB in the layout. It is difficult to calculate the thermal resistance for a custom layout employing some unique copper area attached to each pin of the IC. Table 1 repeats information from the Dissipation Ratings table of the TPS7A3001 and the TPS7A4901 data sheets for comparison with the thermal resistance, θ_{JA} , calculated for this EVM to show the variation in thermal resistances for given copper areas. The high-K value is determined using a standard JEDEC high-k (2s2p) board having a 3-inch x 30-inch dimension with 1-ounce internal power and ground planes and 2-ounce copper traces on top and bottom of the board.

Table 1. Thermal Resistance, θ_{JA} , and Maximum Power Dissipation

Board	Package	θ_{JA}	Max Dissipation ($T_A = 25^\circ\text{C}$)	Max Dissipation ($T_A = 70^\circ\text{C}$)
High-K	DGN	55.09°C/W	1.83 W	1.08 W
TPS7A30-49EVM-567	DGN	46.11°C/W	2.16 W	1.19 W

The thermal resistance for the TPS7A30-49EVM-567, θ_{JA} , is the measured value for this particular layout scheme. The maximum power dissipation is proportional to the volume of copper volume connected to the package. Note that these measurements were made with only one LDO turned on.

7 Board Layout


Figure 6. Assembly Layer

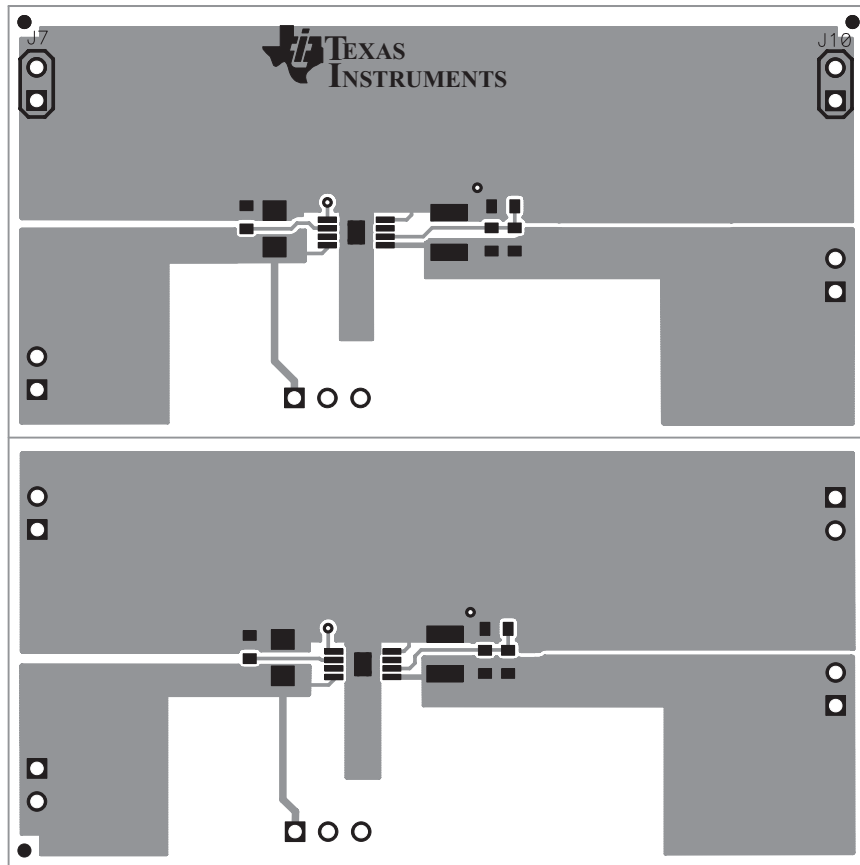


Figure 7. Top Layer Routing

8 Schematic and Bill of Materials

8.1 Schematic

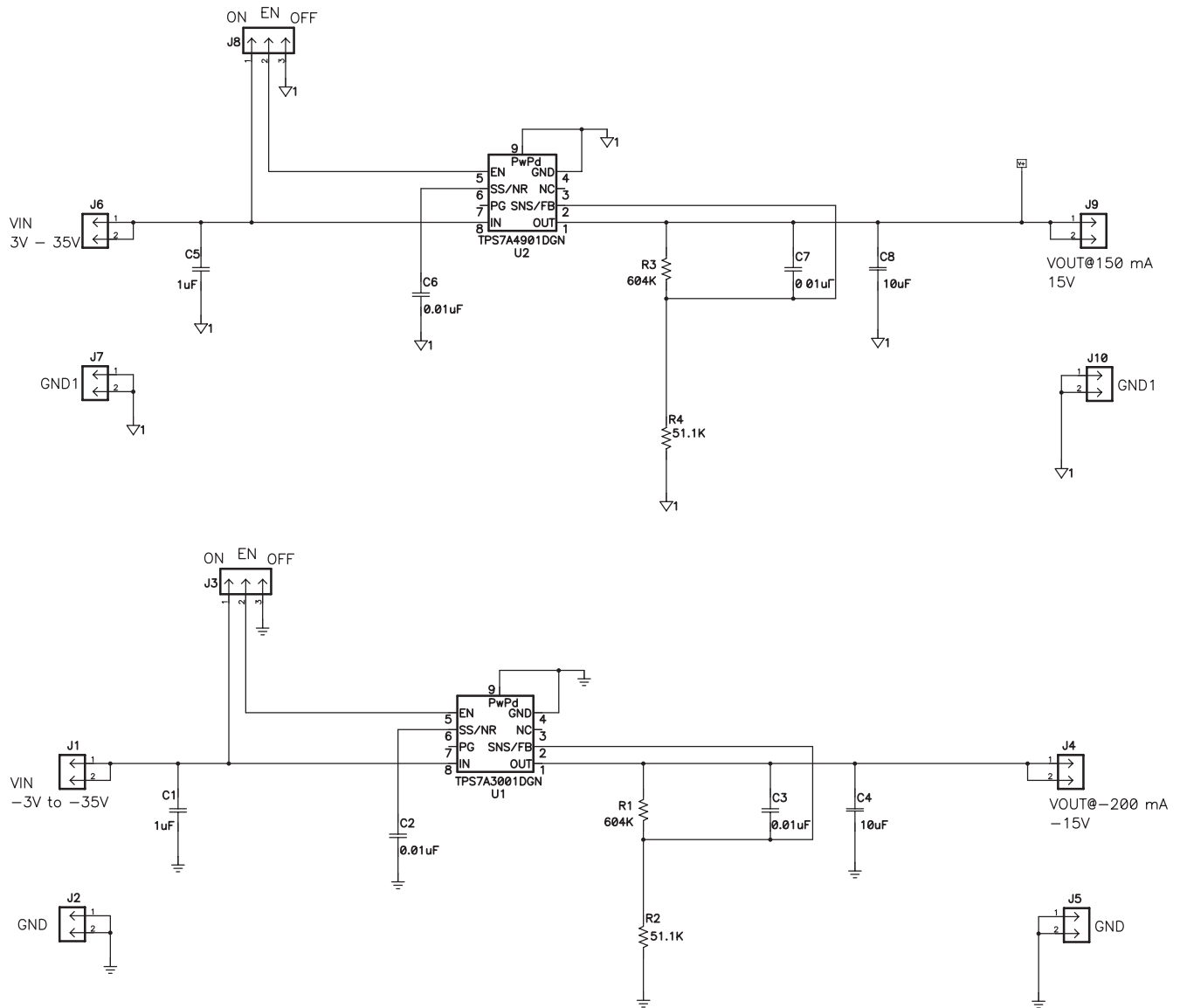


Figure 9. TPS7A30-49EVM-567 Schematic

8.2 Bill of Materials

Table 2. TPS7A30-49EVM-567 Bill of Materials

Count	RefDes	Value	Description	Size	Part Number	MFR
2	C1, C5	1 μ F	Capacitor, Ceramic, 50V, X7R, 10%	1206	STD	STD
4	C2, C3, C6, C7	0.01 μ F	Capacitor, Ceramic, Low Inductance, 50V, X7R, 10%	0603	STD	STD
2	C4, C8	10 μ F	Capacitor, Ceramic, 50V, X7R, 10%	1210	STD	STD
8	J1, J2, J4, J5, J6, J7, J9, J10	PEC02SAAN	Header, Male 2-pin, 100mil spacing	0.100 inch x 2	PEC02SAAN	Sullins
2	J3, J8	PEC03SAAN	Header, Male 3-pin, 100mil spacing	0.100 inch x 3	PEC03SAAN	Sullins
2	R1, R3	604K	Resistor, Chip, 1/16W, 1%	0603	STD	STD
2	R2, R4	51.1K	Resistor, Chip, 1/16W, 1%	0603	STD	STD
1	U1	TPS7A3001DGN	IC, -3V to -35V, -200mA, Ultralow Noise, High-PSRR LDO Neg Linear Reg	MSOP-8	TPS7A3001DGN	TI
1	U2	TPS7A4901DGN	IC, VIN 3V to 35V, 150mA, Ultralow Noise, High-PSRR, LDO Regulator	HTSSOP	TPS7A4901DGN	TI
1	-	HPA567A	2.6 x 2.6 x 0.062 PCB		HPA567A	Any
1		15-29-1025	Shunt, 2POs .100 Gold		15-29-1025	Molex

- Notes:
1. These assemblies are ESD sensitive, ESD precautions shall be observed.
 2. These assemblies must be clean and free from flux and all contaminants.
Use of no clean flux is not acceptable.
 3. These assemblies must comply with workmanship standards IPC-A-610 Class 2.
 4. Ref designators marked with an asterisk (***) cannot be substituted.
All other components can be substituted with equivalent MFG's components.
 5. Do not separate PCB

Evaluation Board/Kit Important Notice

Texas Instruments (TI) provides the enclosed product(s) under the following conditions:

This evaluation board/kit is intended for use for **ENGINEERING DEVELOPMENT, DEMONSTRATION, OR EVALUATION PURPOSES ONLY** and is not considered by TI to be a finished end-product fit for general consumer use. Persons handling the product(s) must have electronics training and observe good engineering practice standards. As such, the goods being provided are not intended to be complete in terms of required design-, marketing-, and/or manufacturing-related protective considerations, including product safety and environmental measures typically found in end products that incorporate such semiconductor components or circuit boards. This evaluation board/kit does not fall within the scope of the European Union directives regarding electromagnetic compatibility, restricted substances (RoHS), recycling (WEEE), FCC, CE or UL, and therefore may not meet the technical requirements of these directives or other related directives.

Should this evaluation board/kit not meet the specifications indicated in the User's Guide, the board/kit may be returned within 30 days from the date of delivery for a full refund. **THE FOREGOING WARRANTY IS THE EXCLUSIVE WARRANTY MADE BY SELLER TO BUYER AND IS IN LIEU OF ALL OTHER WARRANTIES, EXPRESSED, IMPLIED, OR STATUTORY, INCLUDING ANY WARRANTY OF MERCHANTABILITY OR FITNESS FOR ANY PARTICULAR PURPOSE.**

The user assumes all responsibility and liability for proper and safe handling of the goods. Further, the user indemnifies TI from all claims arising from the handling or use of the goods. Due to the open construction of the product, it is the user's responsibility to take any and all appropriate precautions with regard to electrostatic discharge.

EXCEPT TO THE EXTENT OF THE INDEMNITY SET FORTH ABOVE, NEITHER PARTY SHALL BE LIABLE TO THE OTHER FOR ANY INDIRECT, SPECIAL, INCIDENTAL, OR CONSEQUENTIAL DAMAGES.

TI currently deals with a variety of customers for products, and therefore our arrangement with the user **is not exclusive.**

TI assumes **no liability for applications assistance, customer product design, software performance, or infringement of patents or services described herein.**

Please read the User's Guide and, specifically, the Warnings and Restrictions notice in the User's Guide prior to handling the product. This notice contains important safety information about temperatures and voltages. For additional information on TI's environmental and/or safety programs, please contact the TI application engineer or visit www.ti.com/esh.

No license is granted under any patent right or other intellectual property right of TI covering or relating to any machine, process, or combination in which such TI products or services might be or are used.

FCC Warning

This evaluation board/kit is intended for use for **ENGINEERING DEVELOPMENT, DEMONSTRATION, OR EVALUATION PURPOSES ONLY** and is not considered by TI to be a finished end-product fit for general consumer use. It generates, uses, and can radiate radio frequency energy and has not been tested for compliance with the limits of computing devices pursuant to part 15 of FCC rules, which are designed to provide reasonable protection against radio frequency interference. Operation of this equipment in other environments may cause interference with radio communications, in which case the user at his own expense will be required to take whatever measures may be required to correct this interference.

EVM Warnings and Restrictions

It is important to operate this EVM within the input voltage range of 3 V to 35 V and the output voltage range of 1.212 V to 33 V .

Exceeding the specified input range may cause unexpected operation and/or irreversible damage to the EVM. If there are questions concerning the input range, please contact a TI field representative prior to connecting the input power.

Applying loads outside of the specified output range may result in unintended operation and/or possible permanent damage to the EVM. Please consult the EVM User's Guide prior to connecting any load to the EVM output. If there is uncertainty as to the load specification, please contact a TI field representative.

During normal operation, some circuit components may have case temperatures greater than 100° C. The EVM is designed to operate properly with certain components above 100° C as long as the input and output ranges are maintained. These components include but are not limited to linear regulators, switching transistors, pass transistors, and current sense resistors. These types of devices can be identified using the EVM schematic located in the EVM User's Guide. When placing measurement probes near these devices during operation, please be aware that these devices may be very warm to the touch.

Mailing Address: Texas Instruments, Post Office Box 655303, Dallas, Texas 75265
Copyright © 2010, Texas Instruments Incorporated

IMPORTANT NOTICE

Texas Instruments Incorporated and its subsidiaries (TI) reserve the right to make corrections, modifications, enhancements, improvements, and other changes to its products and services at any time and to discontinue any product or service without notice. Customers should obtain the latest relevant information before placing orders and should verify that such information is current and complete. All products are sold subject to TI's terms and conditions of sale supplied at the time of order acknowledgment.

TI warrants performance of its hardware products to the specifications applicable at the time of sale in accordance with TI's standard warranty. Testing and other quality control techniques are used to the extent TI deems necessary to support this warranty. Except where mandated by government requirements, testing of all parameters of each product is not necessarily performed.

TI assumes no liability for applications assistance or customer product design. Customers are responsible for their products and applications using TI components. To minimize the risks associated with customer products and applications, customers should provide adequate design and operating safeguards.

TI does not warrant or represent that any license, either express or implied, is granted under any TI patent right, copyright, mask work right, or other TI intellectual property right relating to any combination, machine, or process in which TI products or services are used. Information published by TI regarding third-party products or services does not constitute a license from TI to use such products or services or a warranty or endorsement thereof. Use of such information may require a license from a third party under the patents or other intellectual property of the third party, or a license from TI under the patents or other intellectual property of TI.

Reproduction of TI information in TI data books or data sheets is permissible only if reproduction is without alteration and is accompanied by all associated warranties, conditions, limitations, and notices. Reproduction of this information with alteration is an unfair and deceptive business practice. TI is not responsible or liable for such altered documentation. Information of third parties may be subject to additional restrictions.

Resale of TI products or services with statements different from or beyond the parameters stated by TI for that product or service voids all express and any implied warranties for the associated TI product or service and is an unfair and deceptive business practice. TI is not responsible or liable for any such statements.

TI products are not authorized for use in safety-critical applications (such as life support) where a failure of the TI product would reasonably be expected to cause severe personal injury or death, unless officers of the parties have executed an agreement specifically governing such use. Buyers represent that they have all necessary expertise in the safety and regulatory ramifications of their applications, and acknowledge and agree that they are solely responsible for all legal, regulatory and safety-related requirements concerning their products and any use of TI products in such safety-critical applications, notwithstanding any applications-related information or support that may be provided by TI. Further, Buyers must fully indemnify TI and its representatives against any damages arising out of the use of TI products in such safety-critical applications.

TI products are neither designed nor intended for use in military/aerospace applications or environments unless the TI products are specifically designated by TI as military-grade or "enhanced plastic." Only products designated by TI as military-grade meet military specifications. Buyers acknowledge and agree that any such use of TI products which TI has not designated as military-grade is solely at the Buyer's risk, and that they are solely responsible for compliance with all legal and regulatory requirements in connection with such use.

TI products are neither designed nor intended for use in automotive applications or environments unless the specific TI products are designated by TI as compliant with ISO/TS 16949 requirements. Buyers acknowledge and agree that, if they use any non-designated products in automotive applications, TI will not be responsible for any failure to meet such requirements.

Following are URLs where you can obtain information on other Texas Instruments products and application solutions:

Products		Applications	
Amplifiers	amplifier.ti.com	Audio	www.ti.com/audio
Data Converters	dataconverter.ti.com	Automotive	www.ti.com/automotive
DLP® Products	www.dlp.com	Communications and Telecom	www.ti.com/communications
DSP	dsp.ti.com	Computers and Peripherals	www.ti.com/computers
Clocks and Timers	www.ti.com/clocks	Consumer Electronics	www.ti.com/consumer-apps
Interface	interface.ti.com	Energy	www.ti.com/energy
Logic	logic.ti.com	Industrial	www.ti.com/industrial
Power Mgmt	power.ti.com	Medical	www.ti.com/medical
Microcontrollers	microcontroller.ti.com	Security	www.ti.com/security
RFID	www.ti-rfid.com	Space, Avionics & Defense	www.ti.com/space-avionics-defense
RF/IF and ZigBee® Solutions	www.ti.com/lprf	Video and Imaging	www.ti.com/video
		Wireless	www.ti.com/wireless-apps

Mailing Address: Texas Instruments, Post Office Box 655303, Dallas, Texas 75265
Copyright © 2010, Texas Instruments Incorporated

AMEYA360

Components Supply Platform

Authorized Distribution Brand :



Website :

Welcome to visit www.ameya360.com

Contact Us :

➤ Address :

401 Building No.5, JiuGe Business Center, Lane 2301, Yishan Rd
Minhang District, Shanghai , China

➤ Sales :

Direct +86 (21) 6401-6692

Email amall@ameya360.com

QQ 800077892

Skype [ameyasales1](#) [ameyasales2](#)

➤ Customer Service :

Email service@ameya360.com

➤ Partnership :

Tel +86 (21) 64016692-8333

Email mkt@ameya360.com