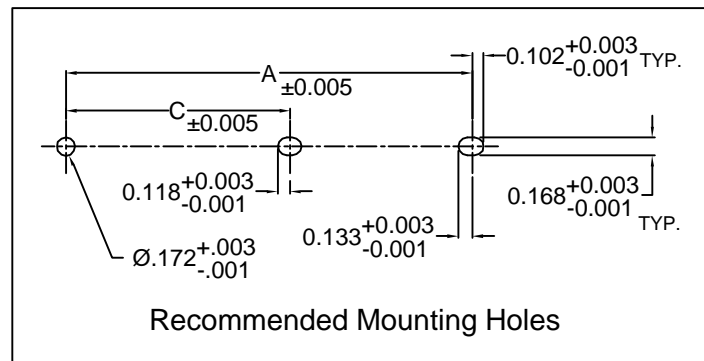
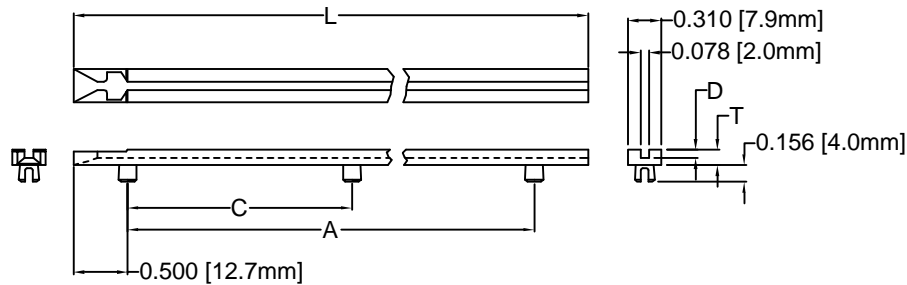


REV.	DESCRIPTION	DATE	APPROVED
D	Engineering Update w/o Changes	02/26/04	M. C.





PART NO.	L ± 0.062 (1.6)	A $+0.016$ (.41) -0.032 (.81)	C $+0.016$ (.41) -0.032 (.81)	D ± 0.005 (.1)	T ± 0.005 (.1)	DESC DWG. NO.
E-200	2.0 (50.8)	1.016 (25.8)	N/A	.078 (2.0)	.125 (3.2)	-
E-250	2.5 (63.5)					84006-01
E-300	3.0 (76.2)	1.516 (38.5)	N/A	.078 (2.0)	.125 (3.2)	84006-02
E-350	3.5 (88.9)					84006-03
E-400	4.0 (101.6)					84006-04
E-450	4.5 (114.3)	3.016 (76.6)	N/A	.078 (2.0)	.125 (3.2)	84006-05
E-500	5.0 (127.0)					84006-06
E-550	5.5 (139.7)					84006-07
E-600	6.0 (152.4)	5.016 (127.4)	N/A	.078 (2.0)	.125 (3.2)	84006-08
E-650	6.5 (165.1)					84006-09
E-700	7.0 (177.8)					84006-10
E-750	7.5 (190.5)	6.031 (153.2)	N/A	.078 (2.0)	.125 (3.2)	84006-11
E-800	8.0 (203.2)					84006-12

PART NO.	L ± 0.062 (1.6)	A $+0.016$ (.41) -0.047 (1.2)	C $+0.016$ (.41) -0.032 (.81)	D ± 0.005 (.1)	T ± 0.007 (.2)	DESC DWG. NO.
E-850	8.5 (215.9)					84006-13
E-900	9.0 (228.6)	7.531 (191.3)	3.766 (95.7)	.078 (2.0)	.141 (3.6)	84006-14
E-950	9.5 (241.3)					84006-15
E-1000	10.0 (254.0)					84006-16
E-1050	10.5 (266.7)	9.031 (229.4)	4.516 (114.7)	.078 (2.0)	.141 (3.6)	84006-17
E-1100	11.0 (279.4)					84006-18
E-1150	11.5 (292.1)					84006-19
E-1200	12.0 (304.8)	10.547 (267.9)	5.274 (134.0)	.093 (2.4)	.156 (4.0)	84006-20
E-1250	12.5 (317.5)					84006-21
E-1300	13.0 (330.2)					84006-22
E-1350	13.5 (342.9)	12.047 (306.0)	6.024 (153.0)	.093 (2.4)	.156 (4.0)	84006-23
E-1400	14.0 (355.6)					84006-24

2. MATERIAL: NYLON 6, 10% GLASS, 94V-0, BLACK. BIVAR MATERIAL CODE 12-BK.
RTP 299A X 59354CFR, BLACK OR MODIFIED PLASTICS MN6-FG10SE BK.

1. GENERAL SPECIFICATIONS: BIVAR MOLDED COMPONENT SPECIFICATION BV00-E101.

STANDARD TOLERANCE (UNLESS OTHERWISE SPECIFIED)		 BIVAR [®] 4 THOMAS, IRVINE, CA. 92618 TEL: (949) 951-8808 FAX: (949) 951-3974	
DECIMALS	ANGULAR		
.X $\pm .1$	X° $\pm 1^\circ$	 TITLE: ECON-O-GIDE PRESS-IN CARD GUIDE	
.XX $\pm .01$			
.XXX $\pm .005$		PART NO: E-XXX	
DESIGNED: Shane Irving	DATE: 08/10/98	REVISION: D	
CHECKED: D. Green	DATE: 12/03/02	CAGE CODE : 32559 SHEET # 1 OF 1 CAD GENERATED DOCUMENT, DO NOT MEASURE DRAWING.	

AMEYA360

Components Supply Platform

Authorized Distribution Brand :



Website :

Welcome to visit www.ameya360.com

Contact Us :

➤ Address :

401 Building No.5, JiuGe Business Center, Lane 2301, Yishan Rd
Minhang District, Shanghai , China

➤ Sales :

Direct +86 (21) 6401-6692

Email amall@ameya360.com

QQ 800077892

Skype ameyasales1 ameyasales2

➤ Customer Service :

Email service@ameya360.com

➤ Partnership :

Tel +86 (21) 64016692-8333

Email mkt@ameya360.com